



msi[®]

BIOS Update Instruction

By EFI Shell

IMPORTANT!

Only update your BIOS if system is unstable or bug solutions correspond with your needs. Flashing BIOS incorrectly has risk to damage your system. Please check the guide and follow all of steps.

Things to prepare:

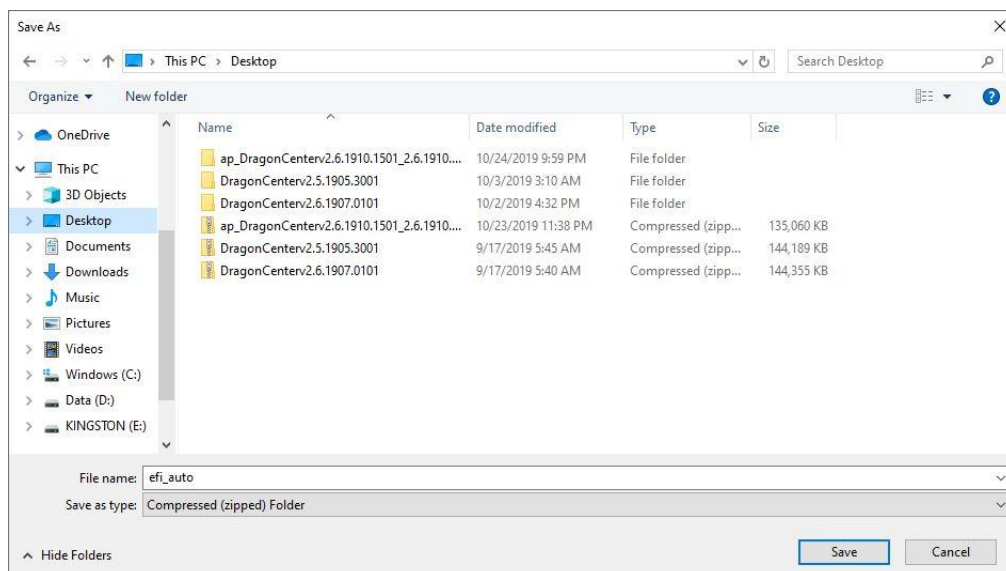
- USB 2.0 flash drive (Please format the USB flash drive to FAT)
- Notebook/Laptop
- Default power supply
- Internet connection

Part 1: Creating EFI Bootable Flash Drive

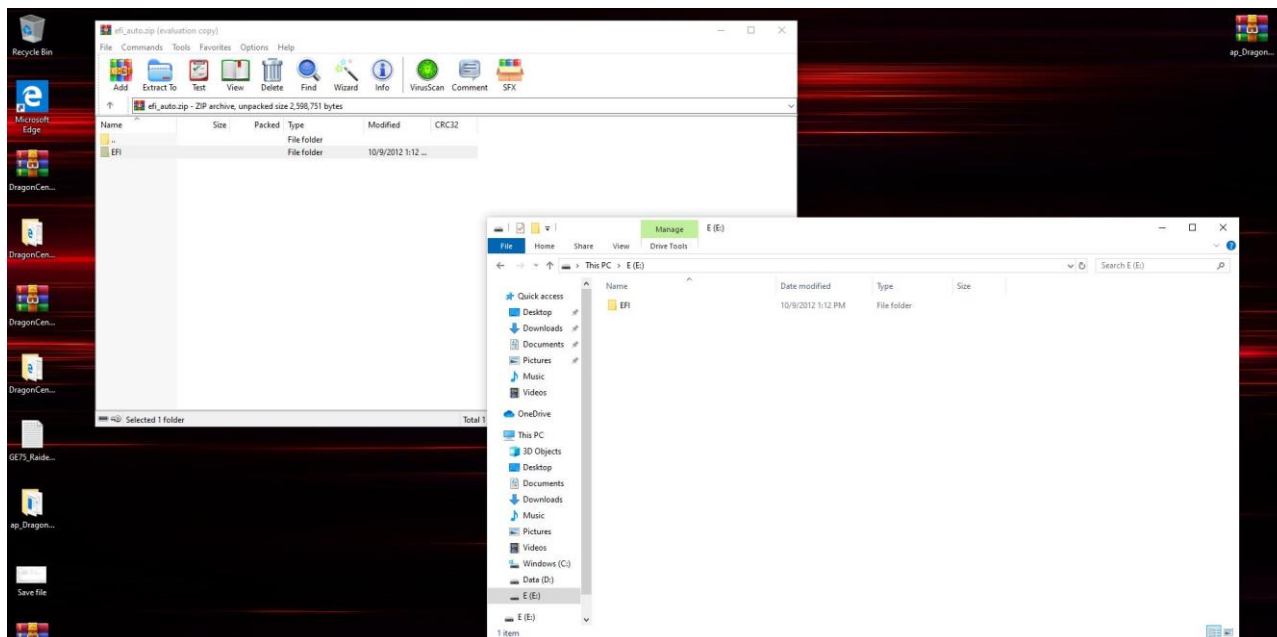
1. Connect your USB flash drive to your notebook and format it to FAT32.
2. Please visit this page to download the tool to create the EFI bootable USB flash drive.

http://download.msi.com/notebook_drivers/ap/efi_auto.zip

3. Save the file to your Desktop.



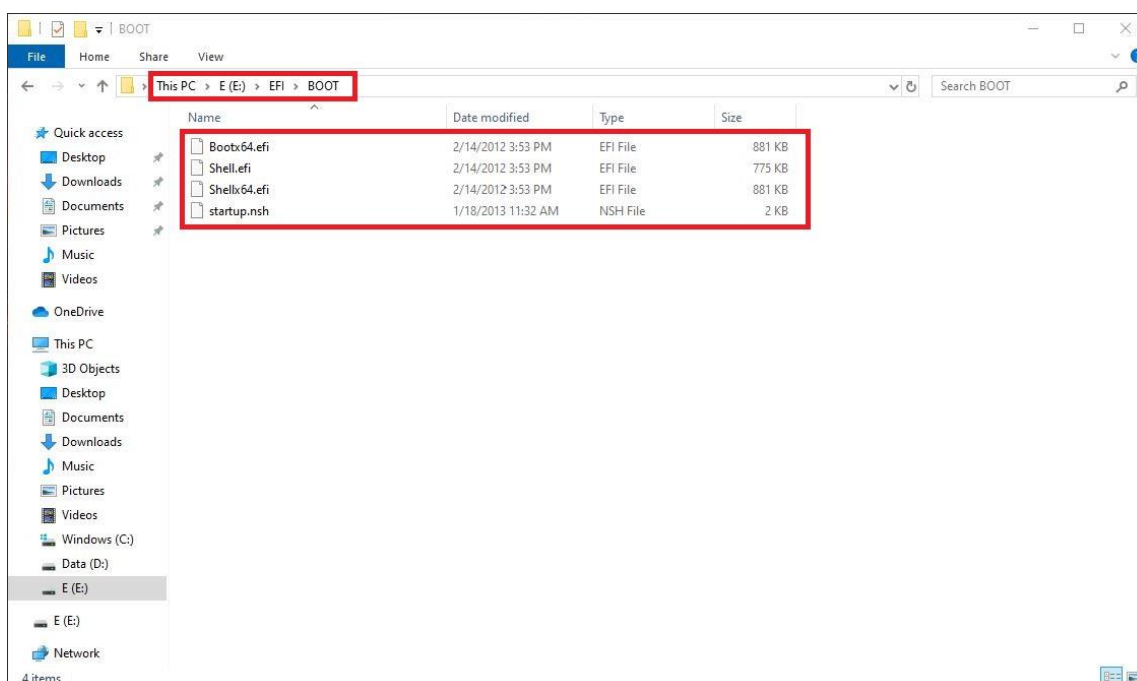
4. Extract the files from [EFI-AUTO.ZIP] to the root directory of your USB drive (should be formatted to FAT32).



Note1: Please place the EFI folder to the correct path, or it will not be bootable correctly.

Note2: The following files should be in X:\EFI\BOOT (replace X with the drive letter of your USB drive):

- Bootx64.efi
- Shellx64.efi
- Shell.efi
- startup.nsh



Part 2: Flashing Win10 UEFI BIOS

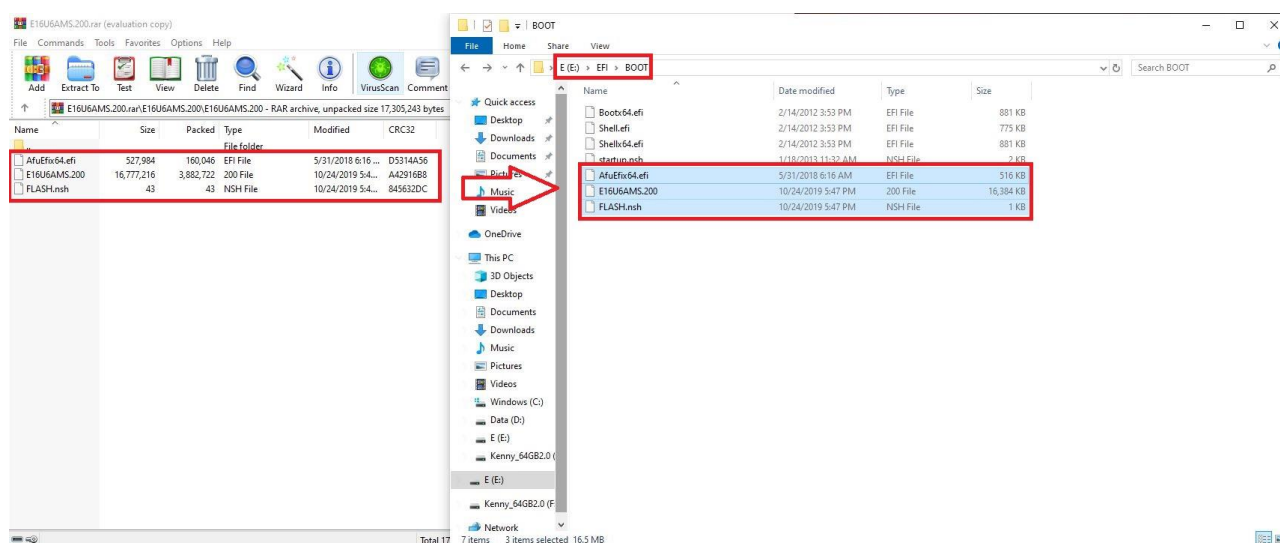
1. Visit MSI official website and download the corresponding Win10 BIOS of your system.

Click on the link below and enter your product's name (such as: ALPHA 15 A3DDK) in the search bar to find the BIOS download page of your notebook.

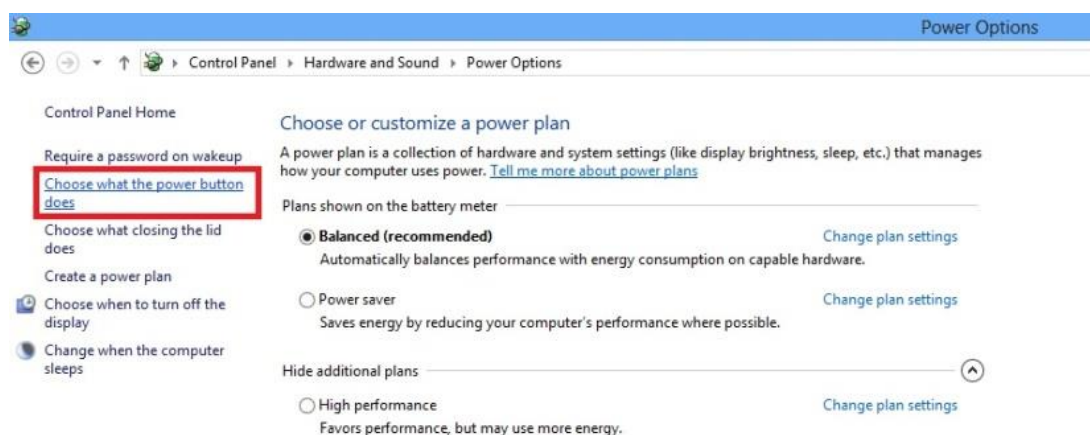
<https://www.msi.com/index.php>

2. Extract the downloaded BIOS to the folder EFI\BOOT\ for later use.

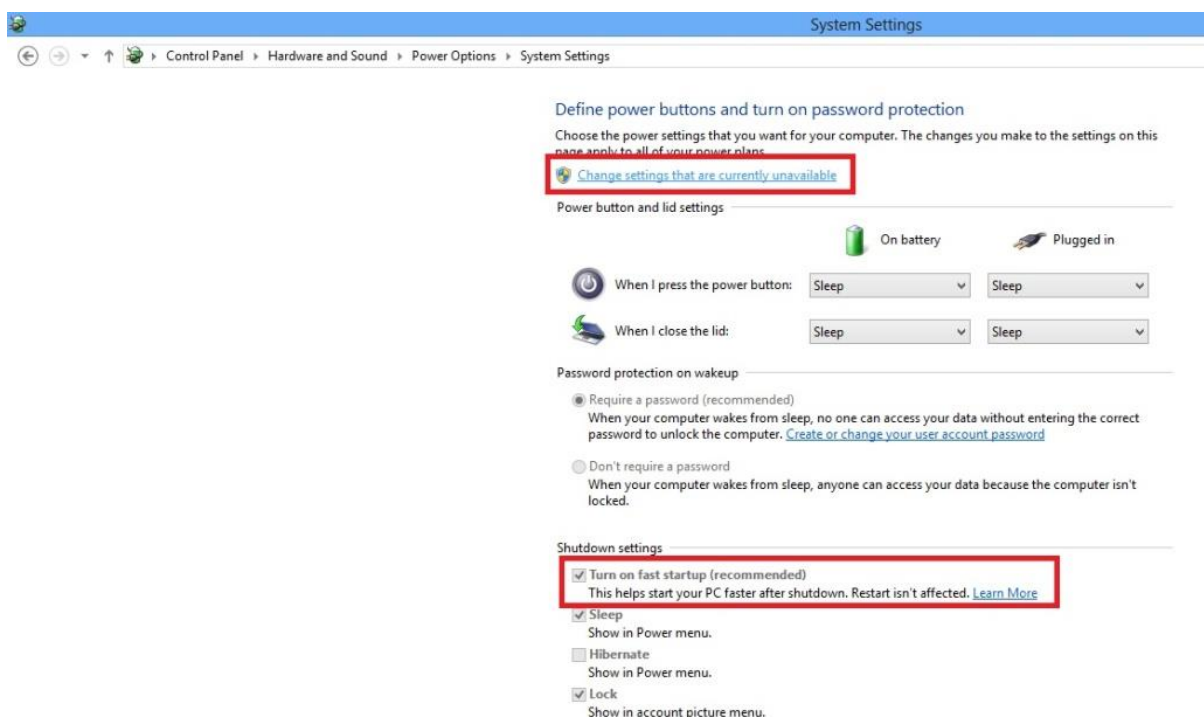
Note: The USB drive is the same drive used in Part 1.



3. Please go to [Control Panel > Hardware and Sound > Power Options], and select [Choose what the power button does].

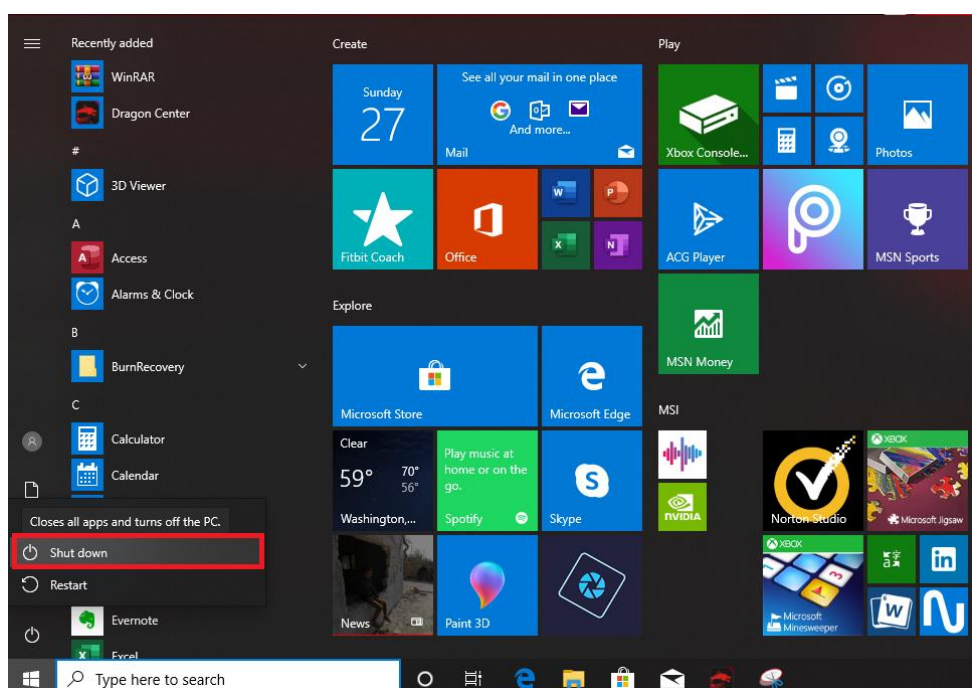


4. Select [Change settings that are currently unavailable] first, and uncheck [Turn on fast startup (recommended)]. Select [Save changes] to continue.

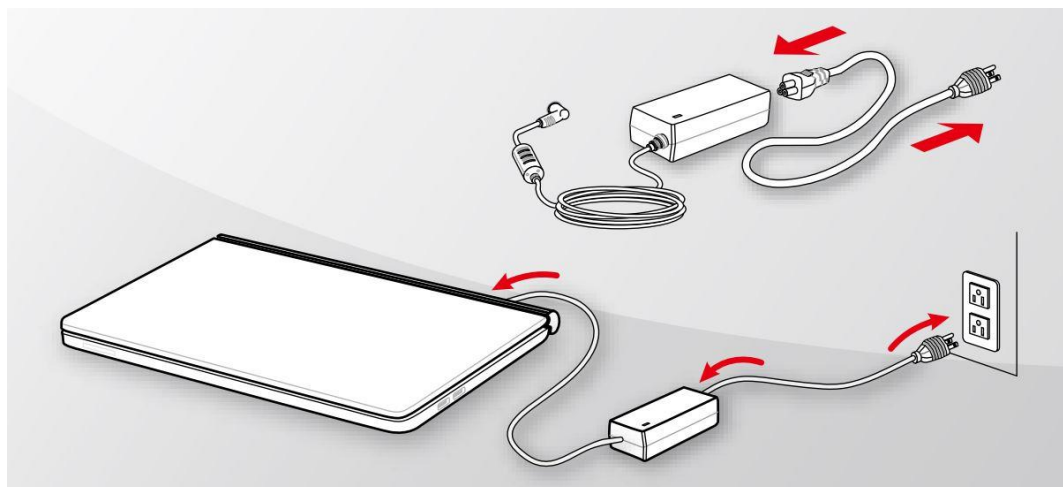


Note: If you want to use the fast startup function, you can go back here to check it on again after the BIOS is updated.

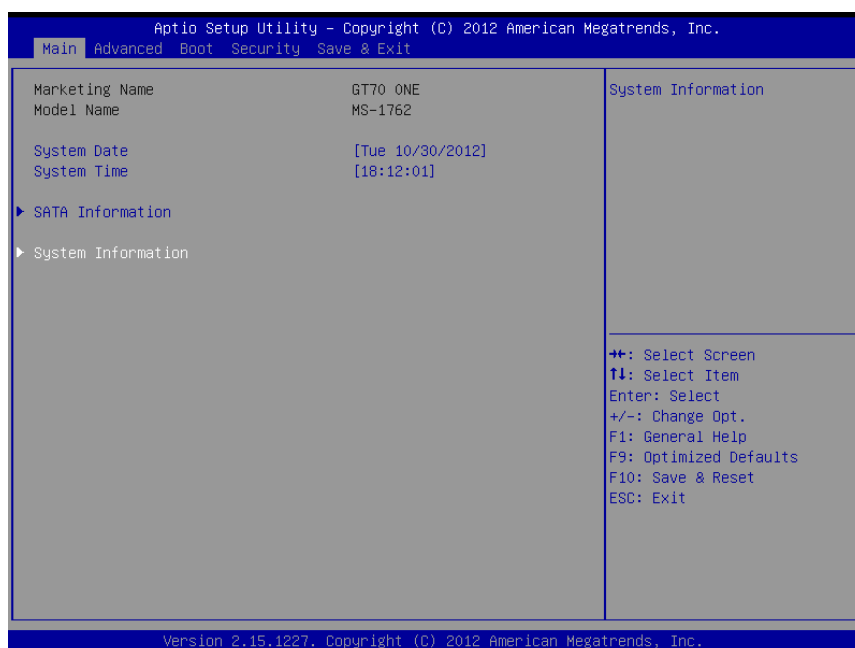
5. If above steps are finished, please shut down the system directly.



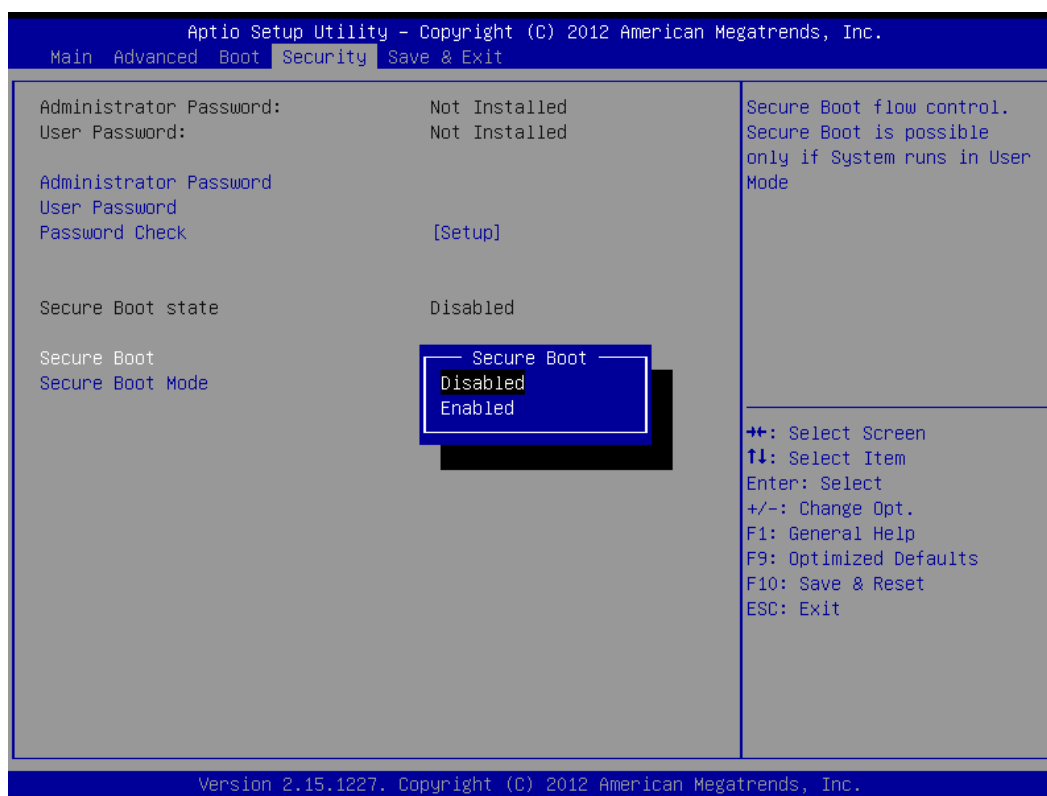
6. Power up your NOTEBOOK by plugging in power adapter. Make sure that NOTEBOOK is running AC power during the entire BIOS update process.



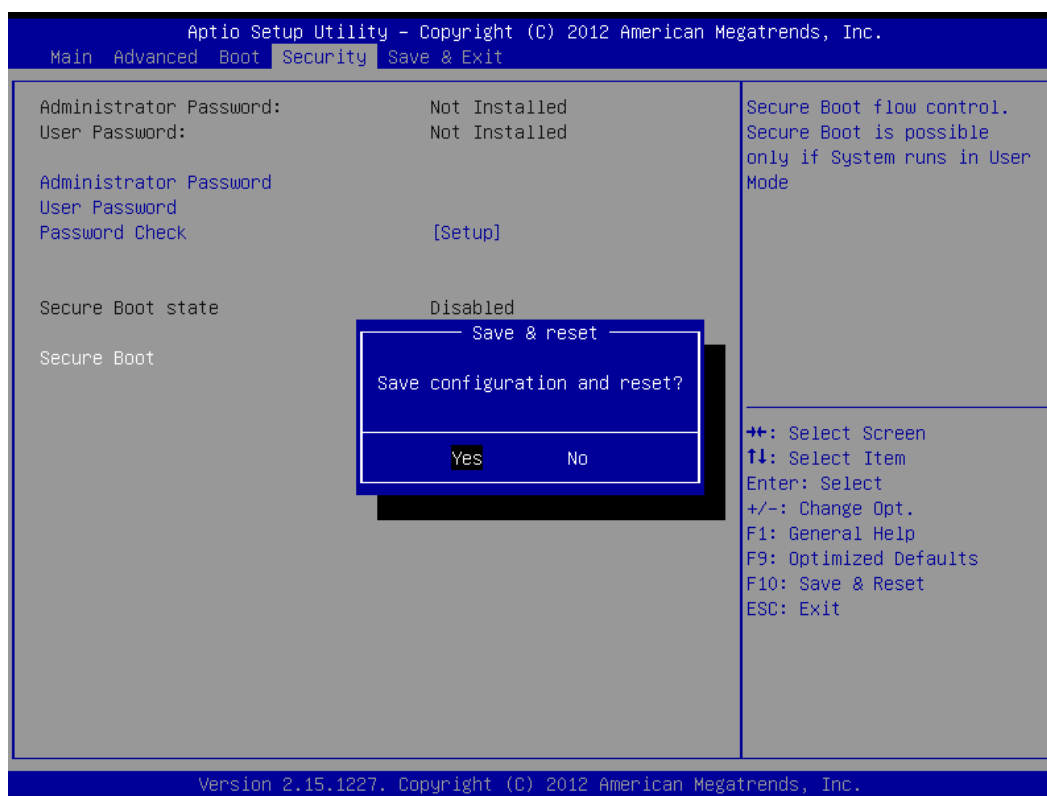
7. Power on NOTEBOOK and continue pressing [DEL] once MSI logo is displayed, until you are prompted to BIOS screen. See figure below:



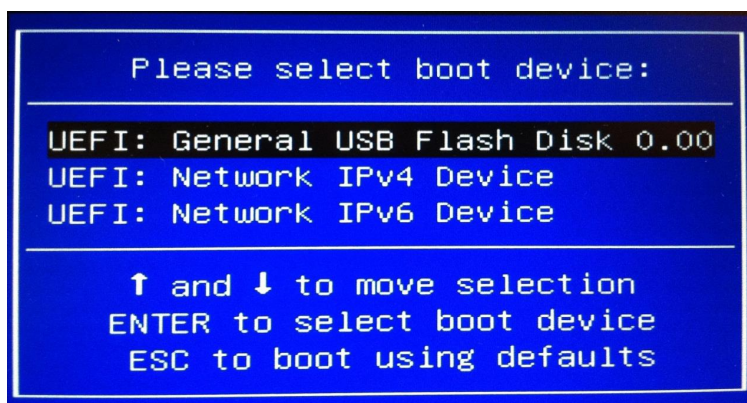
8. Under Security tab, look for the option [Secure Boot] and set it to [Disabled].



9. Press [F10] to save and exit.



10. After system restarts, press function key [F11] to enter boot device menu. Select your USB device by pressing the arrow up/down key, then press enter.



11. During the booting procedure, the system will prompt you whether if you want to update the BIOS. You can press [q] to exit, or press any key to start updating.

```
Found EFI Update Script on fs1:
=====
This utility will allow you to update the EFI firmware.

=====Update-Script-Details=====
type: fs1:\FLASH.NSH, Size 43

AfuEfix64.efi E1762IMS.50R /p /b /n /k /r

=====

If you don't want to update, press 'q', else press any key to update!
=====
Enter 'q' to quit, any other key to continue: _
```


12. Once BIOS flashing is done, type the command `[reset]` then press enter.

```

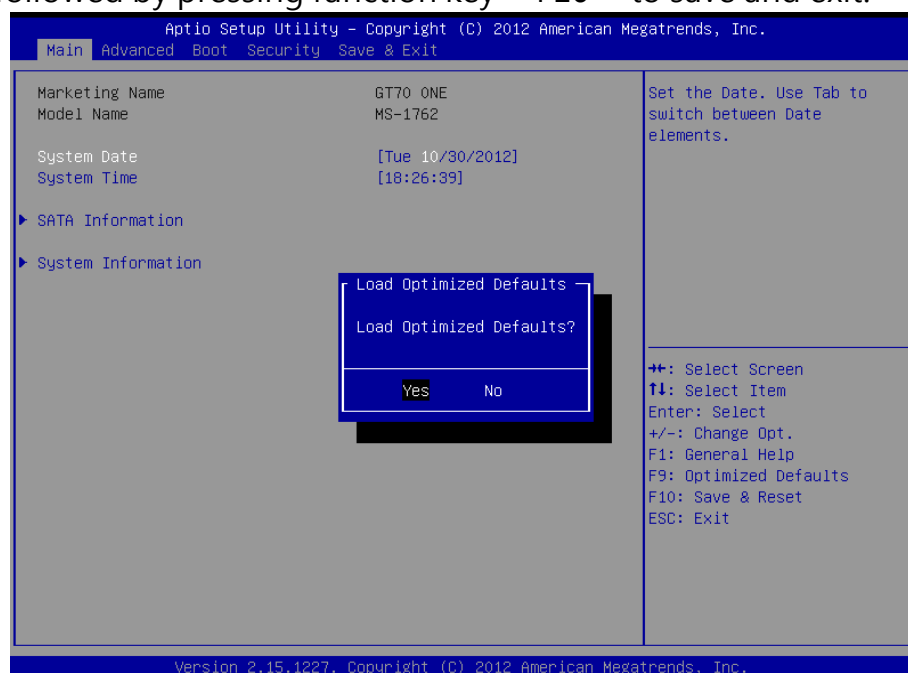
10/26/12  04:28p                               43  FLASH.NSH
10/26/12  04:28p                               47  FLASH_ME.NSH
      4 File(s)      8,721,098 bytes
      2 Dir(s)

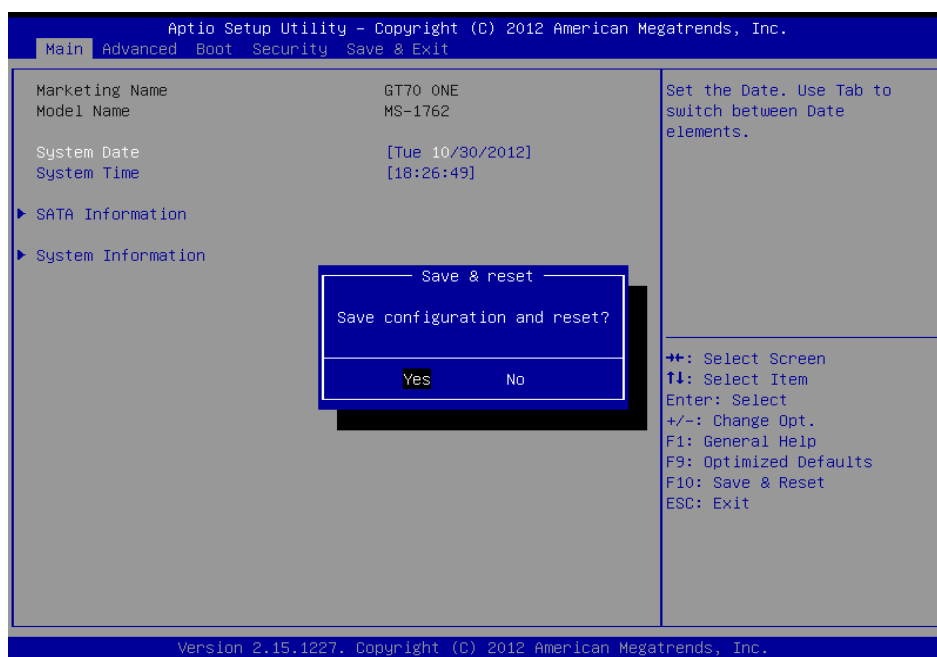
          保存屏幕
fs4:\E1762IMS.50R> flash
flash> AfuEfixG...fi E1762IMS.50R /p /b /n /k /r
-----+-----
|               AMI Firmware Update Utility   v3.03.00               |
|      Copyright (C)2012 American Megatrends Inc. All Rights Reserved.      |
|-----+-----|
Reading flash ..... done
- ME Data Size checking . ok
Secure Flash enabled, recalculate ROM size with signature...
- FFS checksums ..... ok
Loading capsule to secure memory buffer ... done
Erasing Boot Block ..... done
Updating Boot Block ..... done
Verifying Boot Block ..... done
Erasing Main Block ..... done
Updating Main Block ..... done
Verifying Main Block ..... done
Erasing NVRAM Block ..... done
Updating NVRAM Block ..... done
Verifying NVRAM Block ..... done
Erasing NCB Block ..... done
Updating NCB Block ..... done
Verifying NCB Block ..... done

fs4:\E1762IMS.50R> reset_

```

13. Once the system restarts and BIOS POST logo appears, press `[DEL]` to enter BIOS set-up. Afterwards, press function key `[F9]` to load BIOS optimized defaults. Then followed by pressing function key `"F10"` to save and exit.





14. Windows 10 BIOS has been successfully updated



msi[®]

BIOS更新教學 使用EFI Shell更新BIOS

重要事項！

- 如果您的系統有不穩定的問題,或是有缺陷的情況,才進行BIOS的更新, BIOS更新有一定的風險,可能會導致您的系統無法開機。
- 請依照SOP一步步地進行操作。

準備工具：

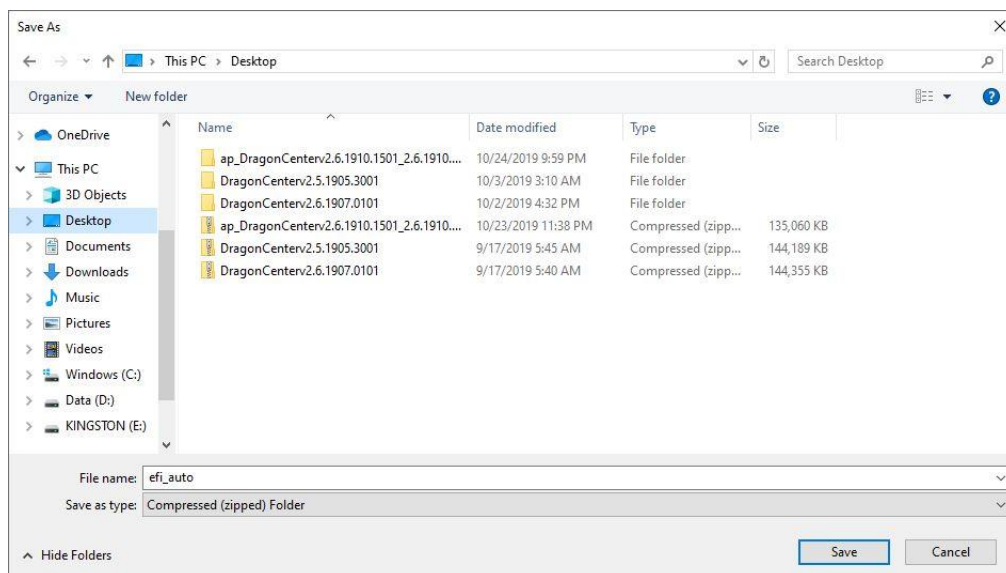
- USB 隨身碟，請使用 FAT32 格式的 USB 隨身碟
- 可連接上網路的電腦或筆記型電腦
- 筆記型電腦的電源供應器

Part 1: 製作EFI開機隨身碟

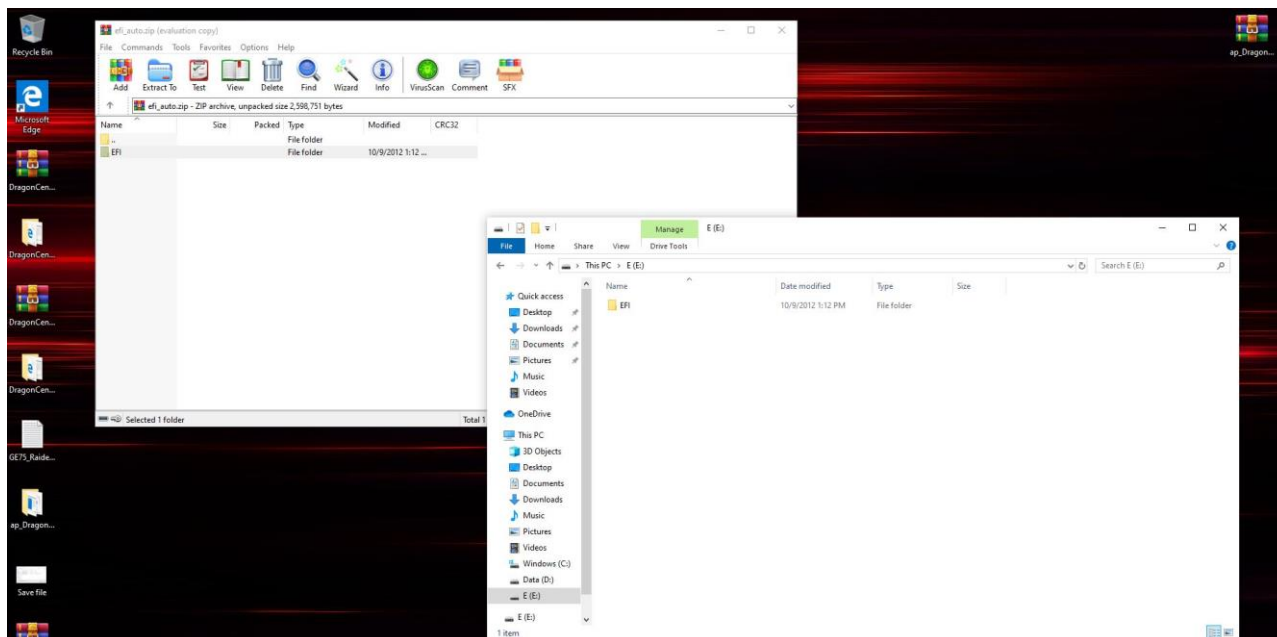
1. 將FAT32格式的USB隨身碟連接至電腦。
2. 請至下列網址下載製作EFI開機隨身碟的工具軟體

http://download.msi.com/nb_drivers/ap/efi_auto.zip

3. 將壓縮檔下載至桌面上備用

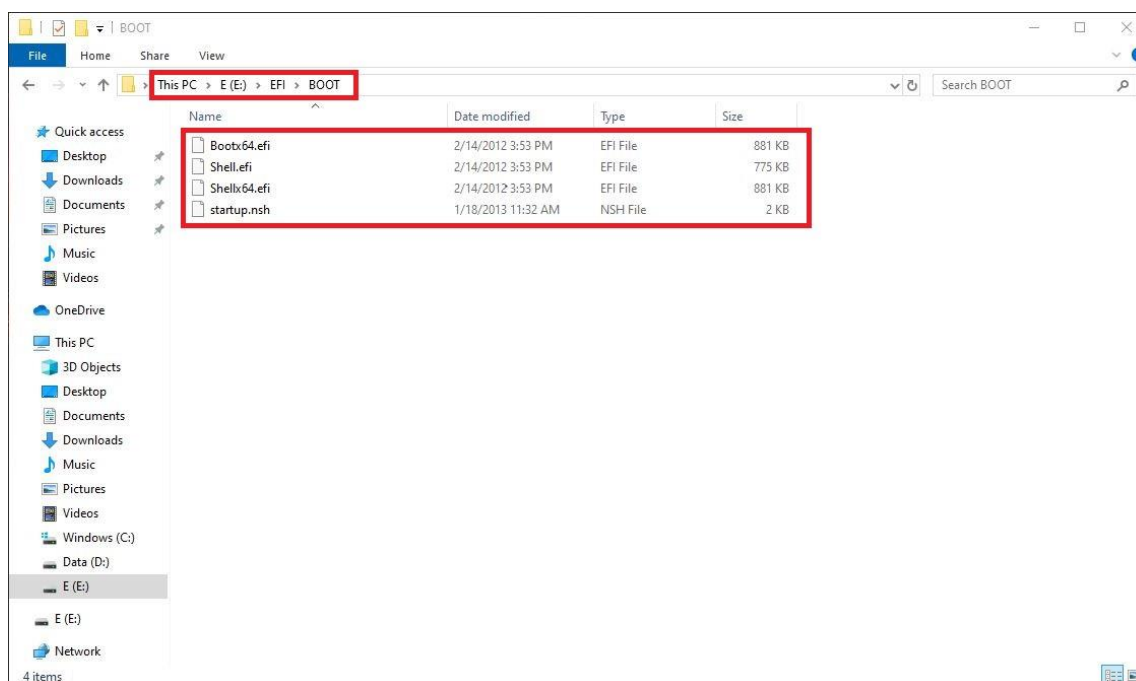


4. 將 EFI_AUTO.ZIP 解壓縮，放在格式為 FAT 32 的隨身碟根目錄下備用。



Note1: EFI 資料夾請依照下列路徑擺放，否則將無法由隨身碟正常開機。

Note2: 檔案必須依照下列路徑擺放 X:\EFI\BOOT (replace X with the drive letter of your USB drive): Bootx64.efi, Shellx64.efi, Shell.efi, startup.nsh



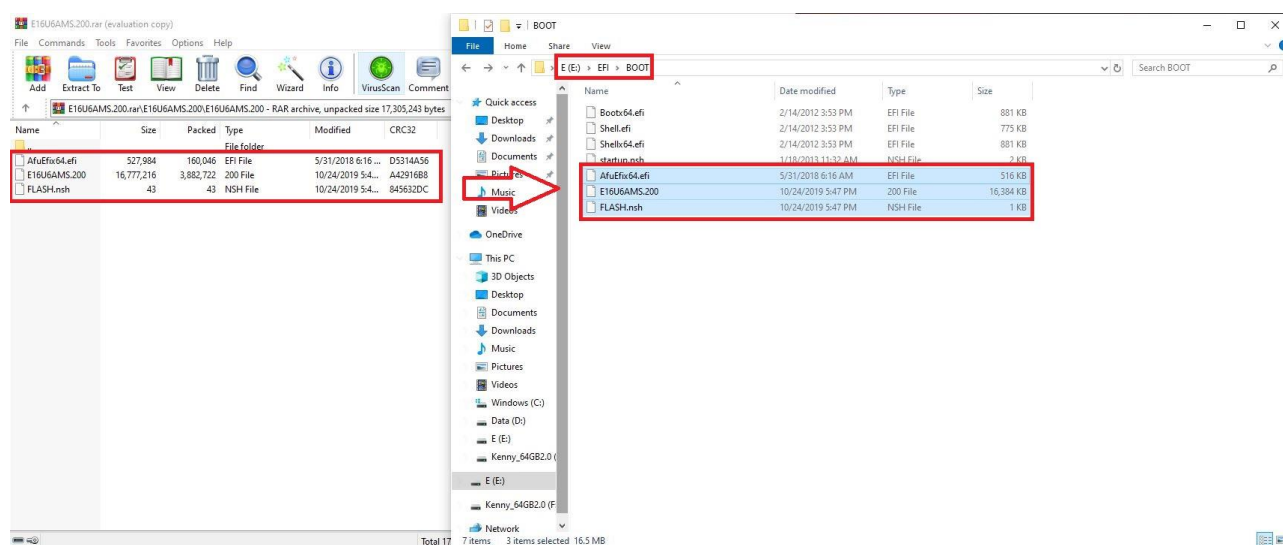
Part 2: 更新 Win10 UEFI BIOS

1. 前往 MSI 官方網站並下載對應您系統的新版本 BIOS。

點選以下連結並輸入您筆記型電腦的名稱 (例如 ALPHA 15 A3DDK) 來搜尋您筆記型電腦的 BIOS 下載頁面。

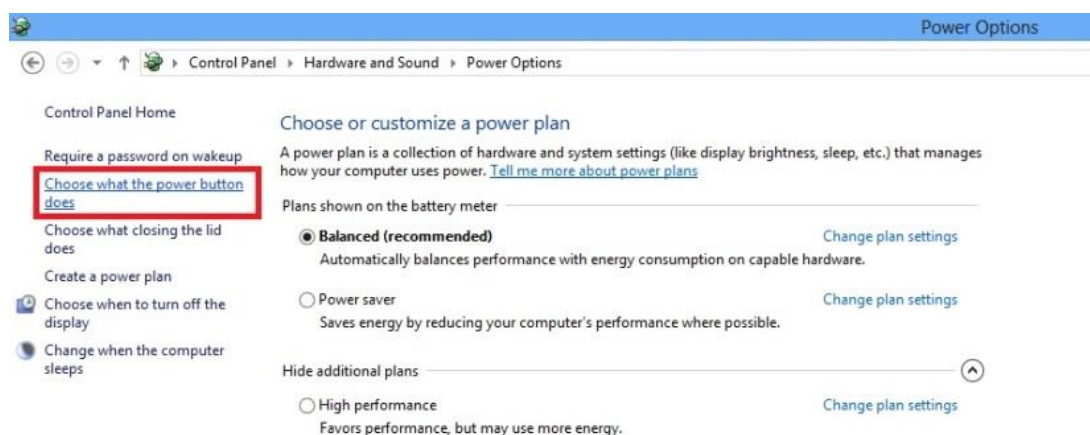
<https://tw.msi.com/index.php>

2. 將下載的 BIOS 解壓縮放在隨身碟的 EFI\BOOT\ 資料夾中備用。

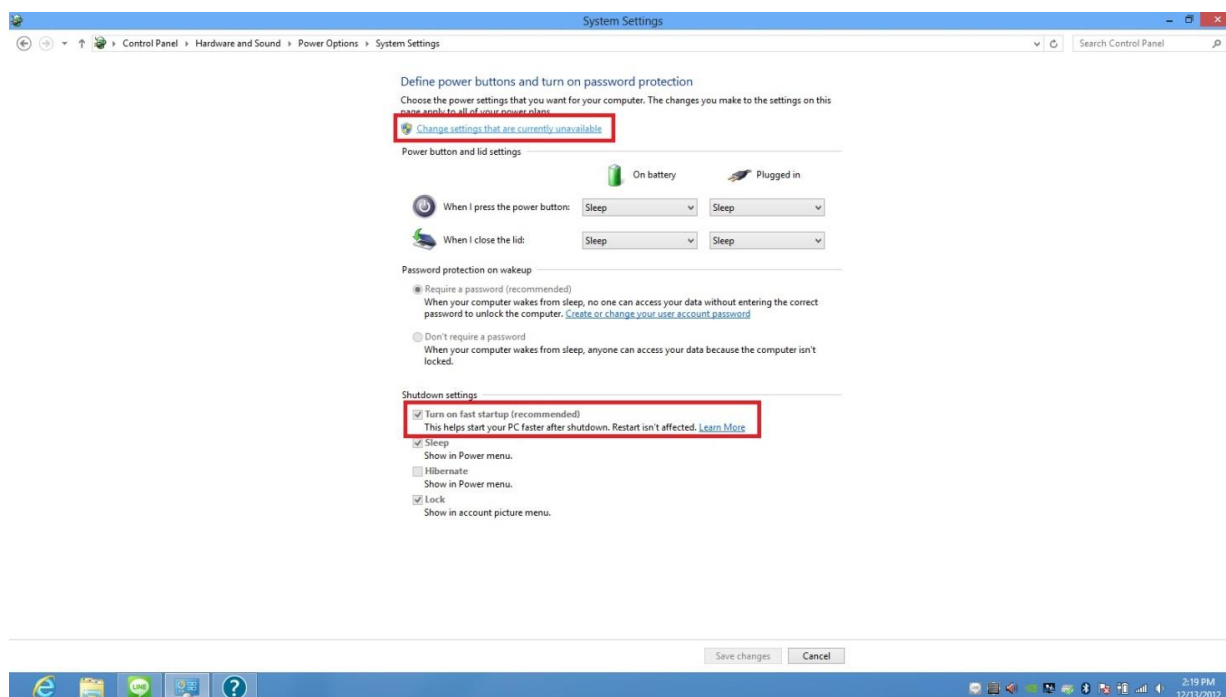


3. 請先進入控制台的電源管理設定頁面，再點選[選擇按下電源按鈕時的行為]。

Note:設定路徑如下:控制台\硬體和音效\電源選項

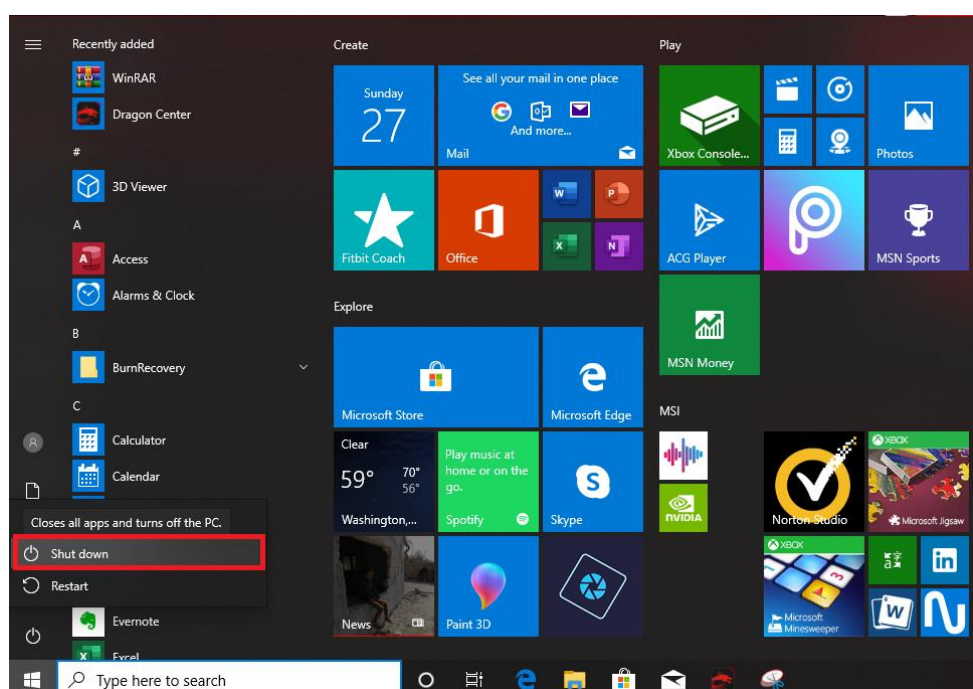


4. 先點選[Change settings that are currently unavailable]後，將快速開機功能關閉，把預設勾選的選項取消並儲存。

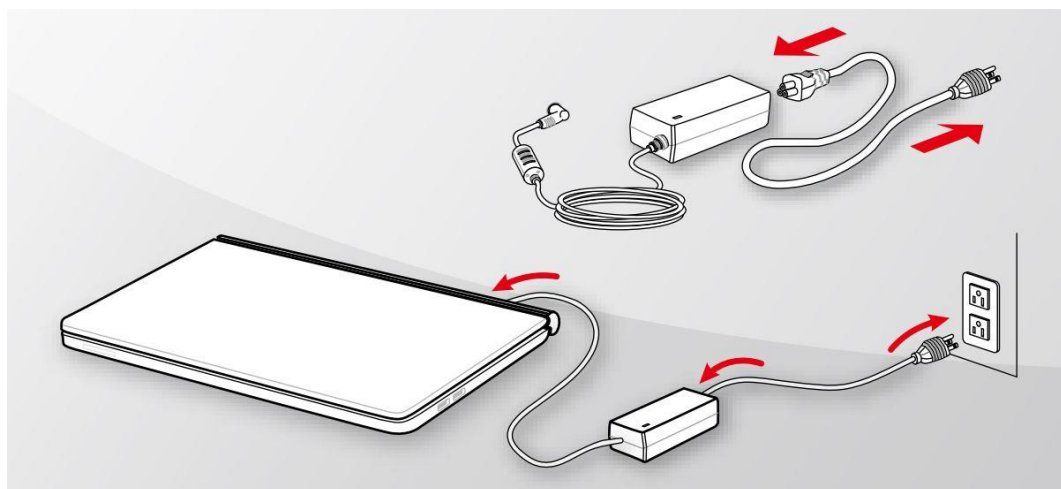


Note: 如果想繼續使用快速開機的功能，在 BIOS 更新完成後可以再回到設定頁面進行設定。

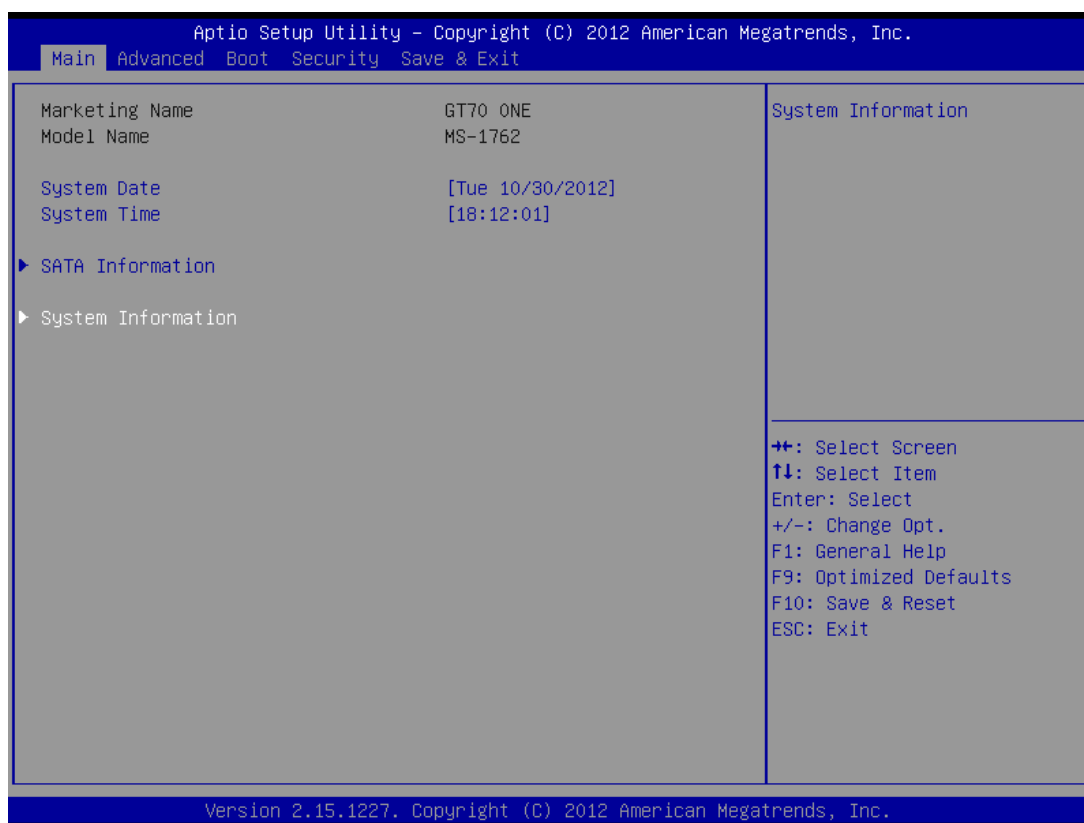
5. 完成上述動作後，請將系統直接關機



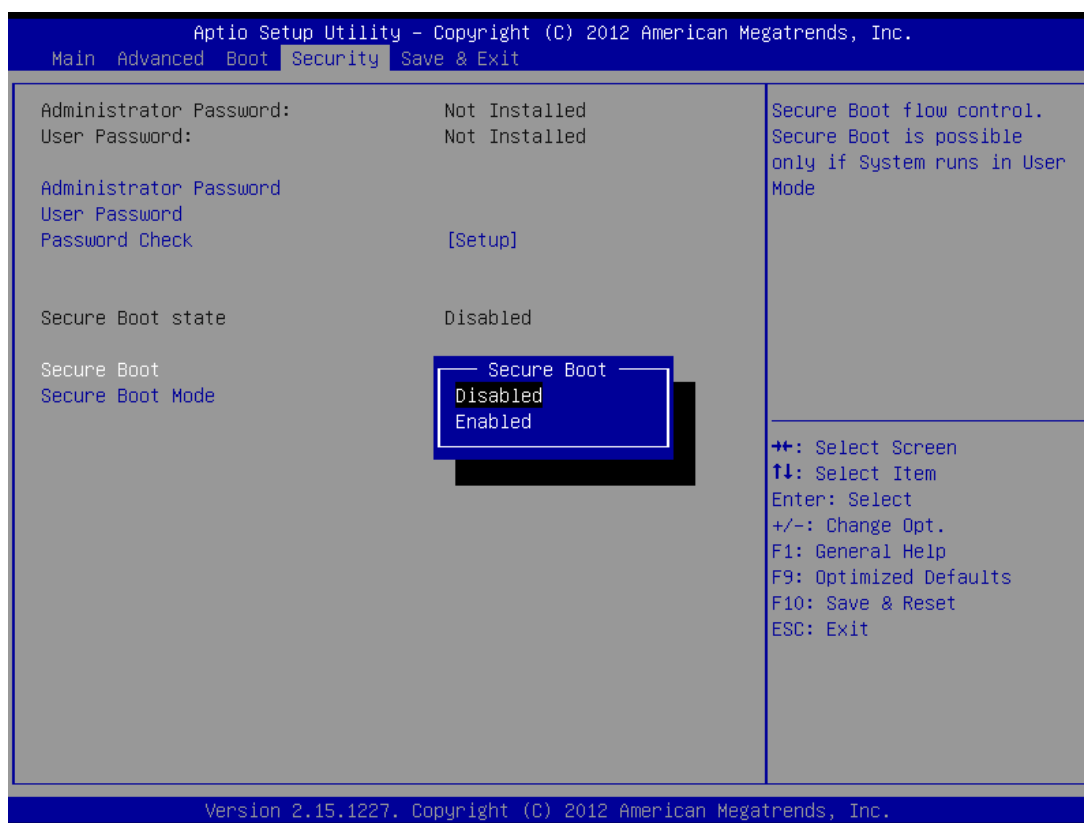
6. 將欲更新 BIOS 的 Notebook 接上電源供應器，操作過程中請保持持續供電的狀態。



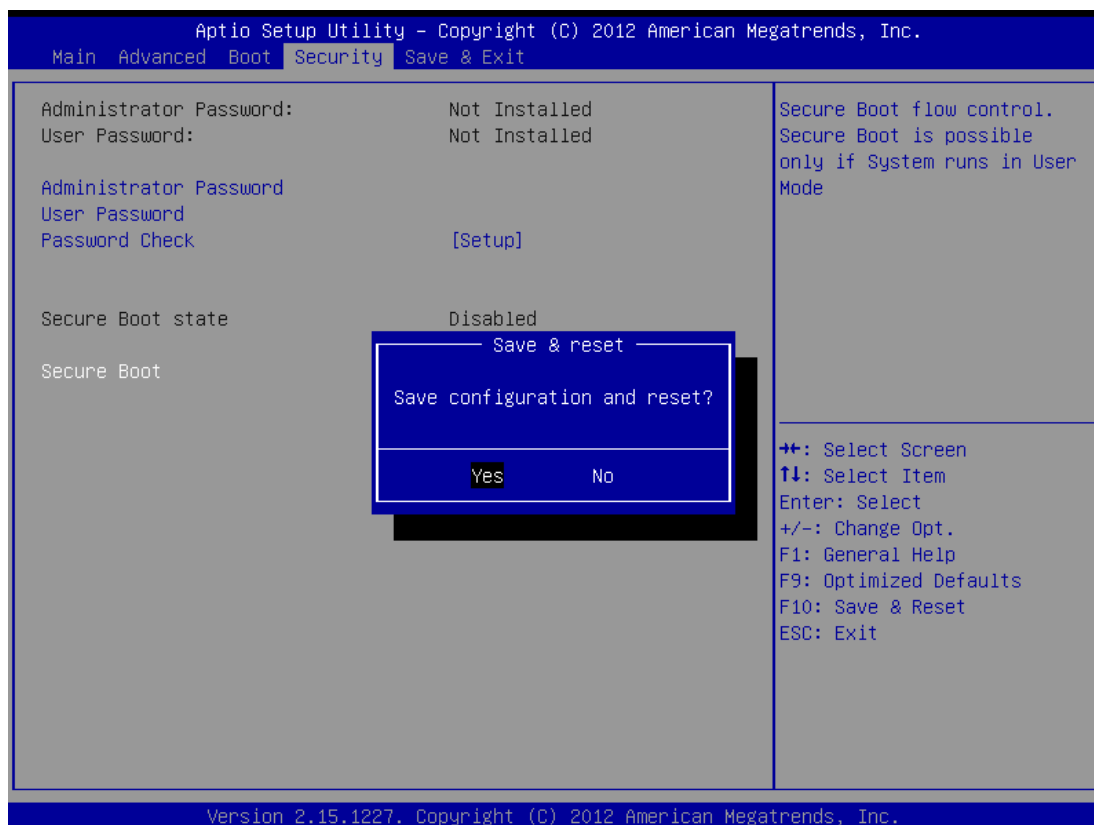
7. 按下電源鍵後,螢幕上出現 MSI LOGO 時,請先按下 [DEL]鍵進入 BIOS 設定畫面。



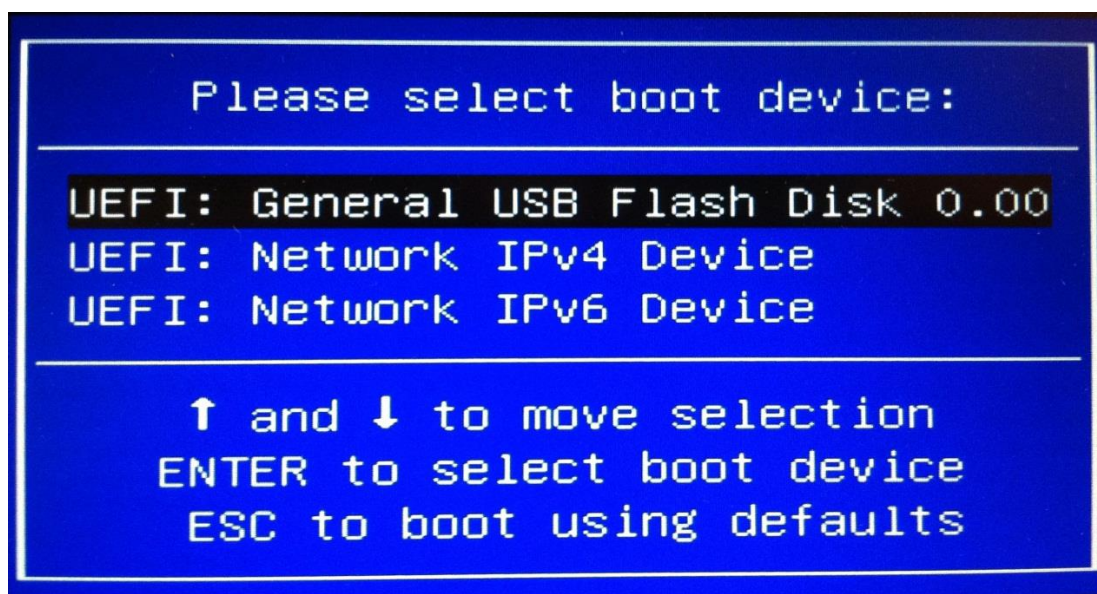
8. 利用方向鍵進行操作，移至 Security 下的[Secure Boot]，修改成[Disabled]。



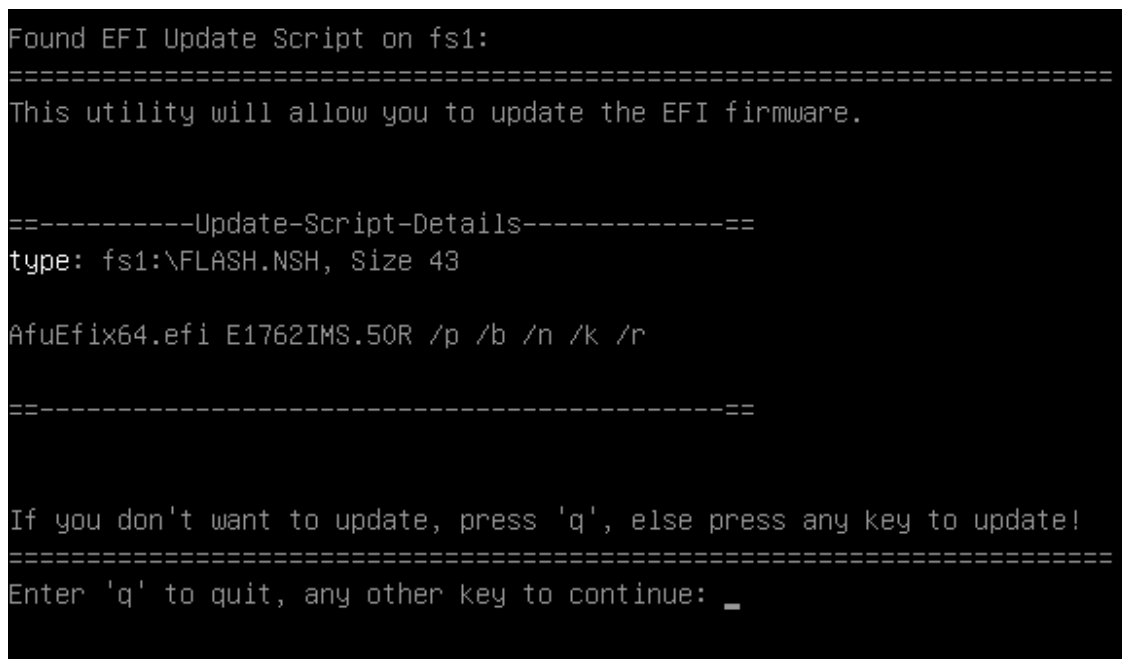
9. 修改後請接上製作完成的隨身碟，並按下[F10]儲存並離開 BIOS 設定畫面。



10. 重新開機出現 MSI LOG 時,請按下 F11 鍵,畫面上會出現快速開機的選單,並利用上/下鍵選擇隨身碟進行開機。



11. 開機過程會詢問是否更新 BIOS, 可按[q]鍵離開, 或是按下任一鍵開始進行更新。



12. 完成更新後請輸入 " **RESET**" 並按下 ENTER 鍵進行重新開機的動作

```

10/26/12  04:28p                43  FLASH.NSH
10/26/12  04:28p                47  FLASH_ME.NSH
      4 File(s)  8,721,098 bytes
      2 Dir(s)

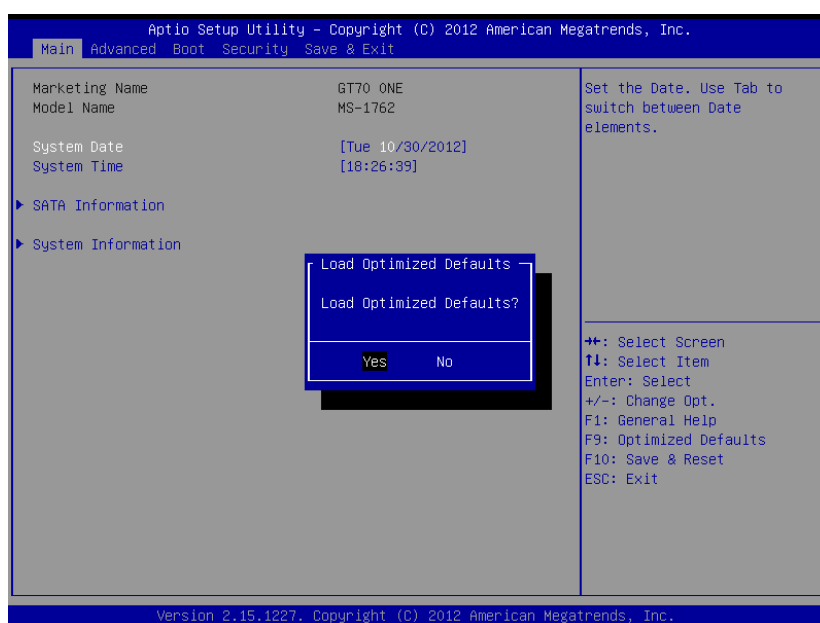
      保存屏幕
fs4:\E1762IMS.50R> flash
flash> AfuEfixGfi E1762IMS.50R /p /b /n /k /r
+-----+
|               AMI Firmware Update Utility  v3.03.00               |
|      Copyright (C)2012 American Megatrends Inc. All Rights Reserved.      |
+-----+

Reading flash ..... done
- ME Data Size checking . ok
Secure Flash enabled, recalculate ROM size with signature...
- FFS checksums ..... ok
Loading capsule to secure memory buffer ... done
Erasing Boot Block ..... done
Updating Boot Block ..... done
Verifying Boot Block ..... done
Erasing Main Block ..... done
Updating Main Block ..... done
Verifying Main Block ..... done
Erasing NVRAM Block ..... done
Updating NVRAM Block ..... done
Verifying NVRAM Block ..... done
Erasing NCB Block ..... done
Updating NCB Block ..... done
Verifying NCB Block ..... done

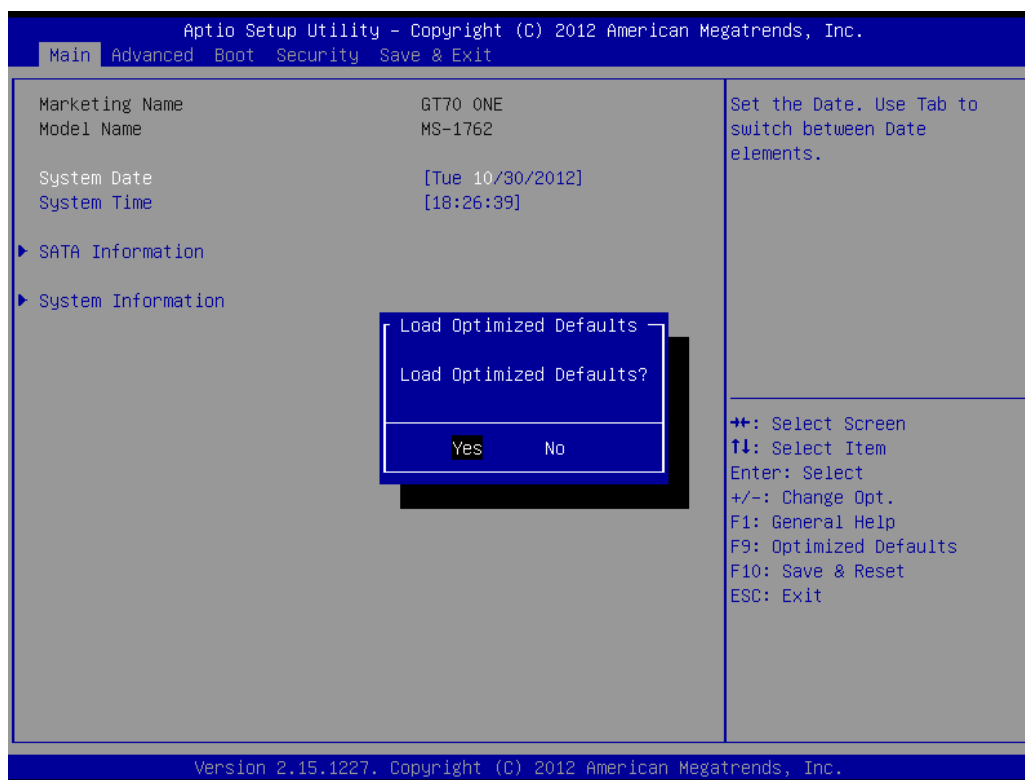
fs4:\E1762IMS.50R> reset_

```

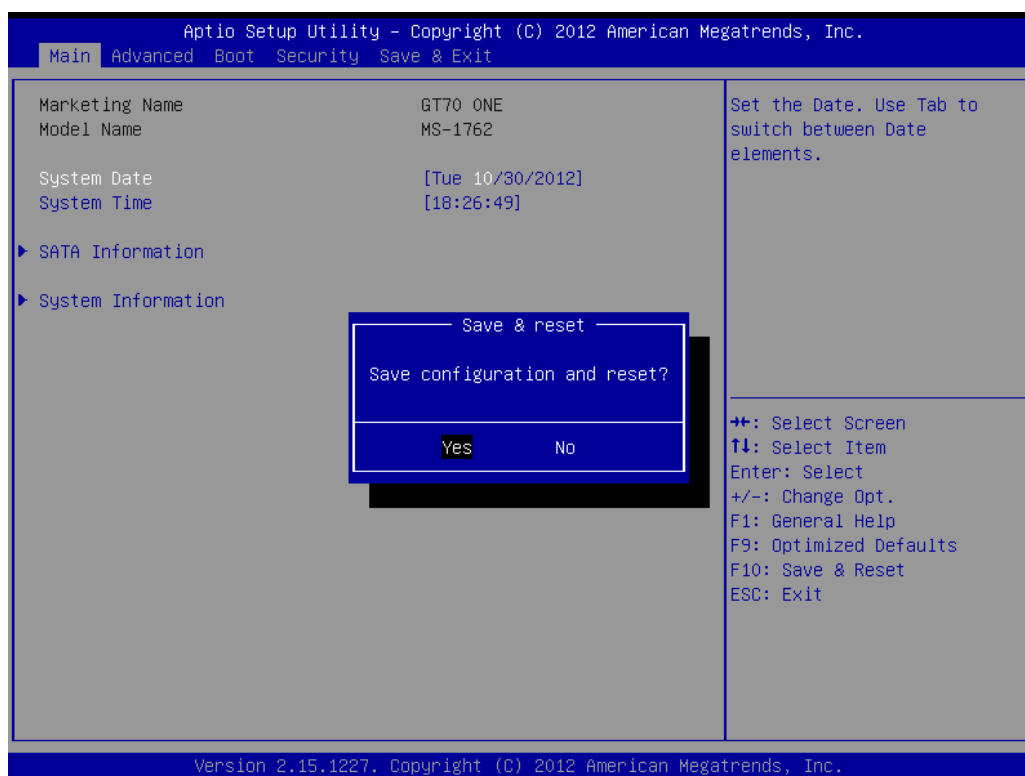
13. 當螢幕一出現 MSI LOGO 時，請先按[DEL]鍵進入 BIOS 設定頁面。



14. 按下[F9]鍵，載入 BIOS 預設值。



15. 按下[F10]鍵，儲存並離開 BIOS 設定畫面，以上即完成 BIOS 更新動作。





msi[®]

BIOS更新教学 使用EFI Shell更新BIOS

重要事项！

- 如果您的系统有不稳定的问题,或是有缺陷的情况,才进行BIOS的更新, BIOS更新有一定的风险,可能会导致您的系统无法开机。
- 请依照SOP一步步地进行操作。

准备工具：

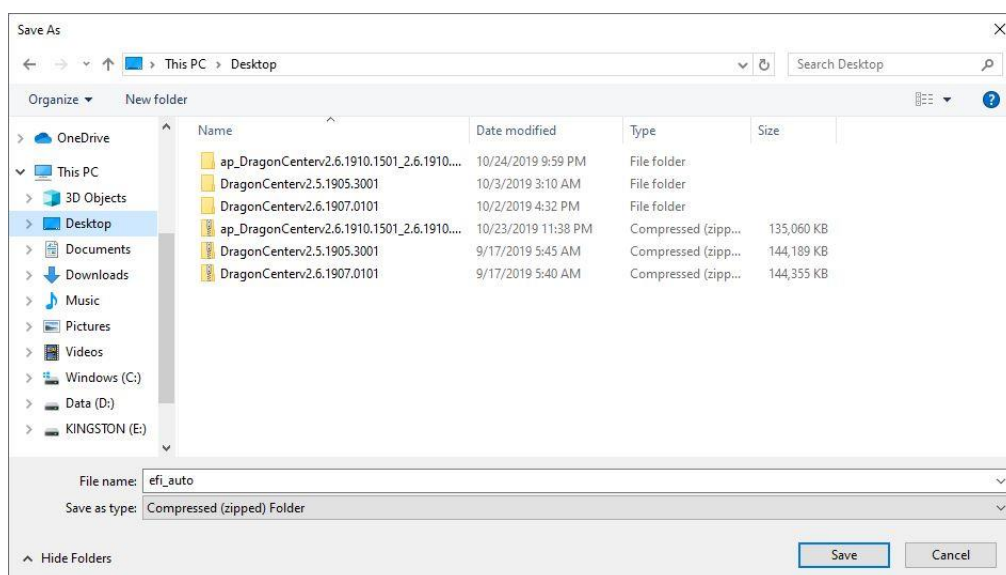
- **USB 随身碟**, 请使用 **FAT32** 格式的 **USB 随身碟**
- 可连接上网络的笔记本电脑
- 笔记本电脑的电源供应器

Part 1: 制作EFI开机随身碟

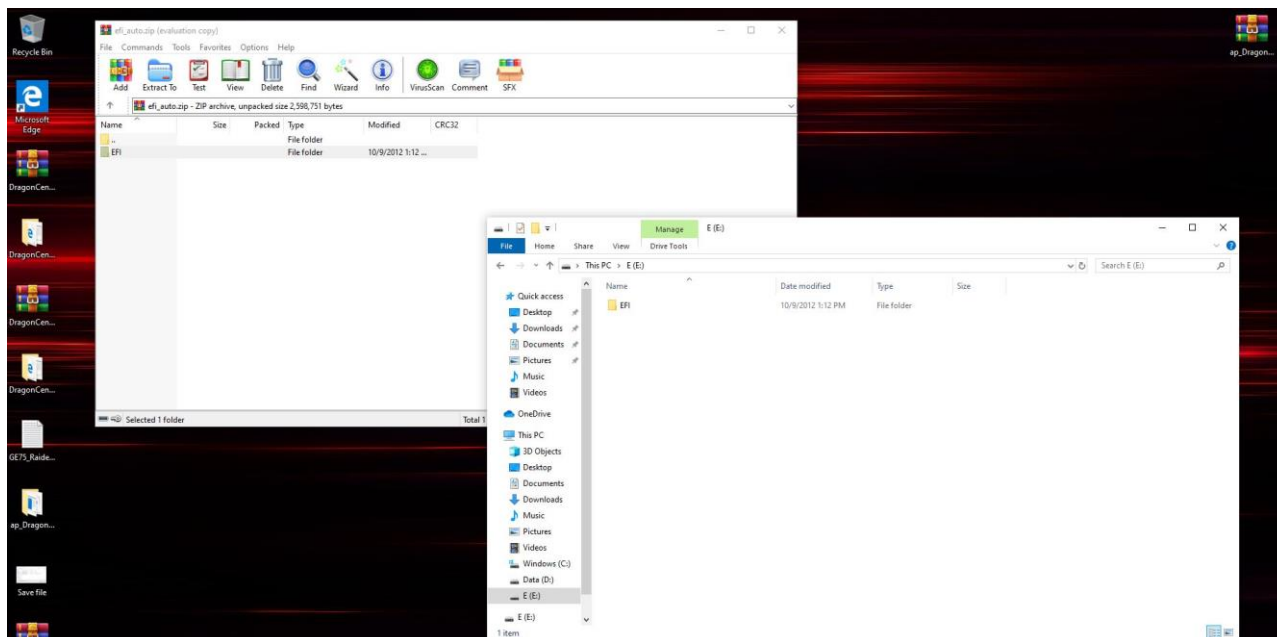
5. 将FAT32格式的USB随身碟连接至电脑
6. 请至下列网址下载制作EFI开机随身碟的工具软件

http://download.msi.com/nb_drivers/ap/efi_auto.zip

7. 将压缩文件下载至桌面上备用

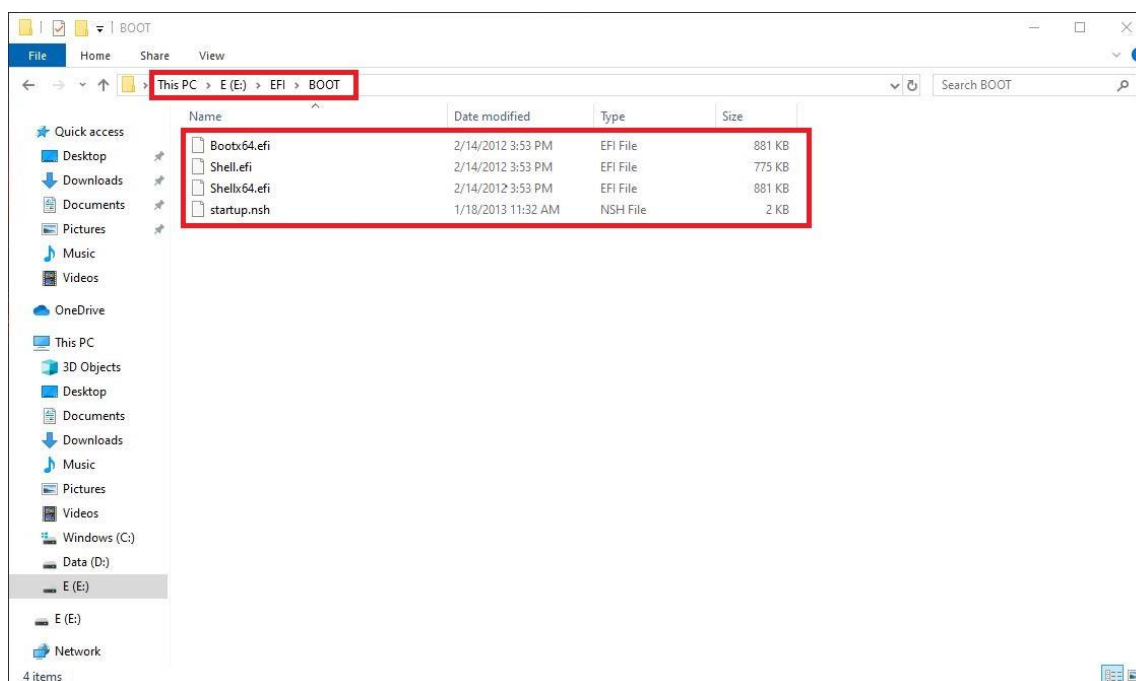


8. 将 EFI_AUTO.ZIP 解压缩，放在格式为 FAT 32 的随身碟根目录下备用。



Note1: EFI 文件夹请依照下列路径摆放，否则将无法由随身碟正常开机。

Note2: 档案必须依照下列路径摆放 X:\EFI\BOOT (replace X with the drive letter of your USB drive): Bootx64.efi, Shellx64.efi, Shell.efi, startup.nsh



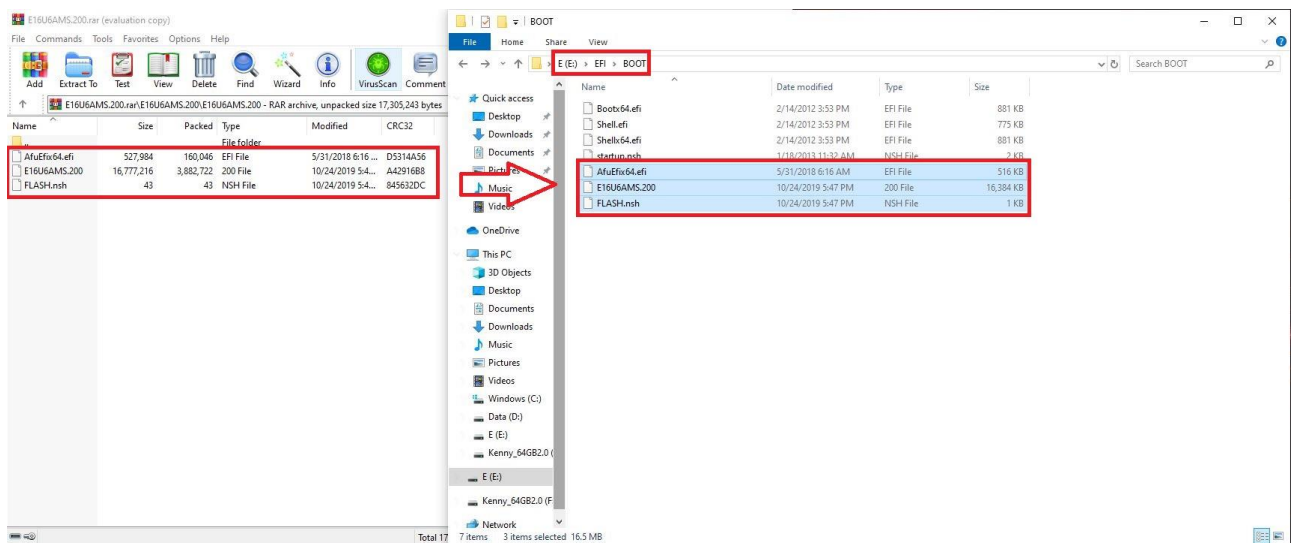
Part 2: 更新 Win10 UEFI BIOS

16. 前往 MSI 官方网站并下载对应您系统的新版本 BIOS。

点选以下连结并输入您笔记本电脑的名称（例如 ALPHA 15 A3DDK）来搜寻您笔记本电脑的 BIO 下载页面。

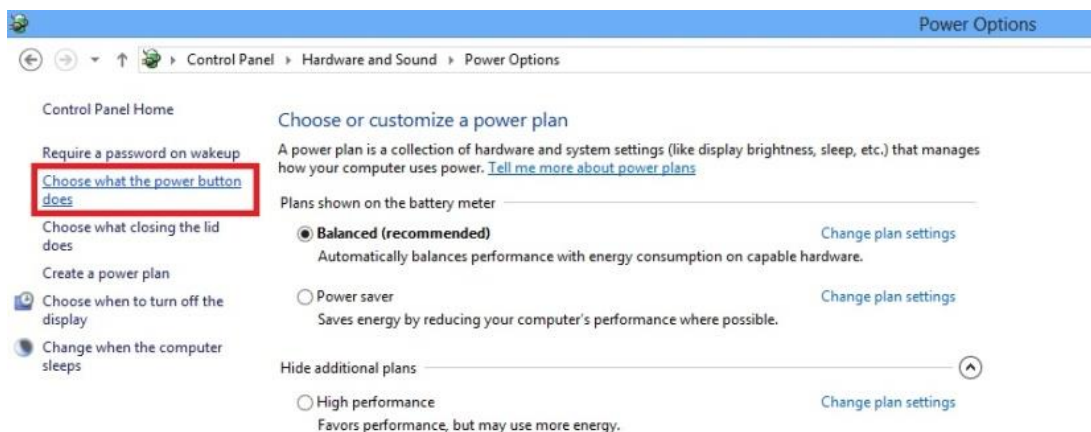
<https://cn.msi.com/index.php>

17. 将下载的 BIOS 解压缩放在随身碟的 EFI\BOOT\ 文件夹中备用。

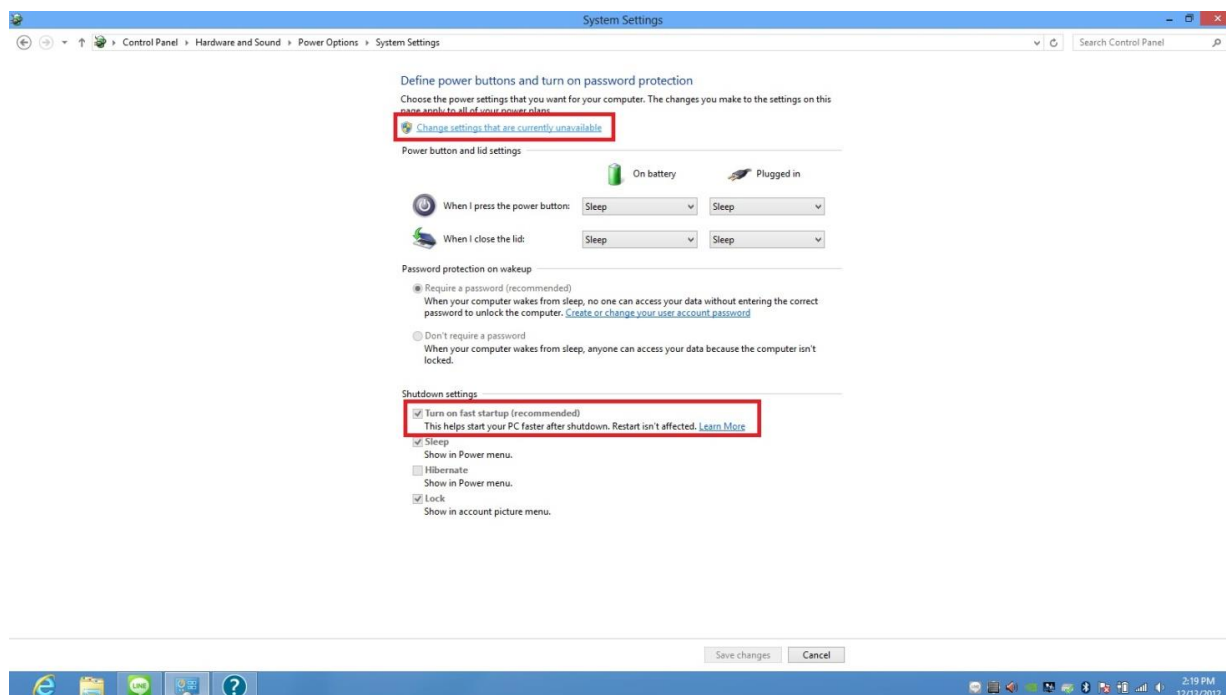


18. 请先进入控制台的电源管理设定页面，再点选[选择按下电源按钮时的行为]。

Note:设定路径如下:控制面板\硬件和音效\电源选项

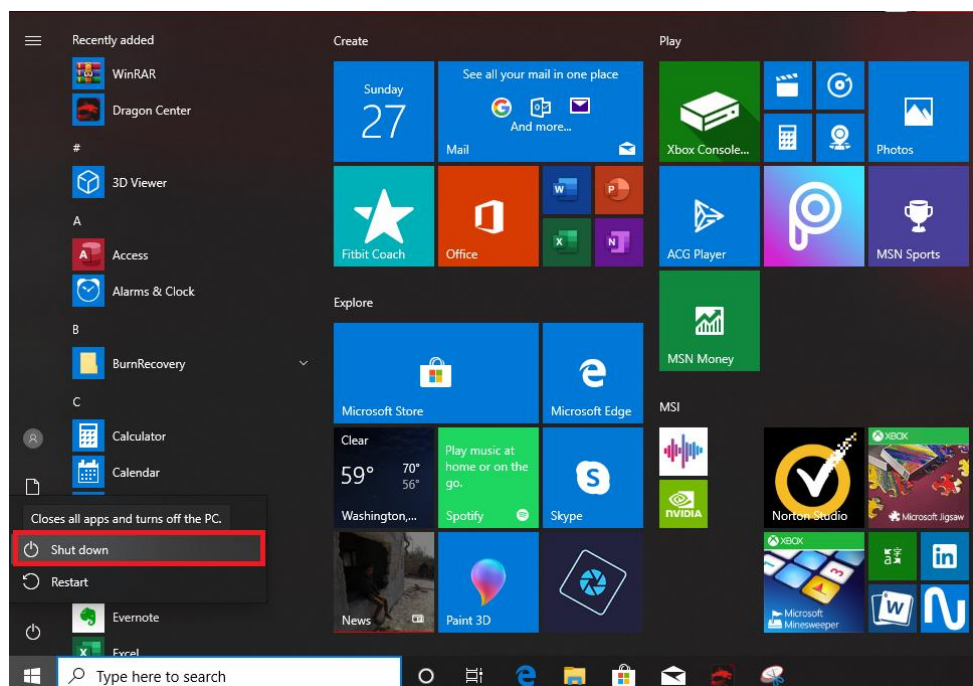


19. 先点选[Change settings that are currently unavailable]后，将快速开机功能关闭。把默认勾选的选项取消并储存。

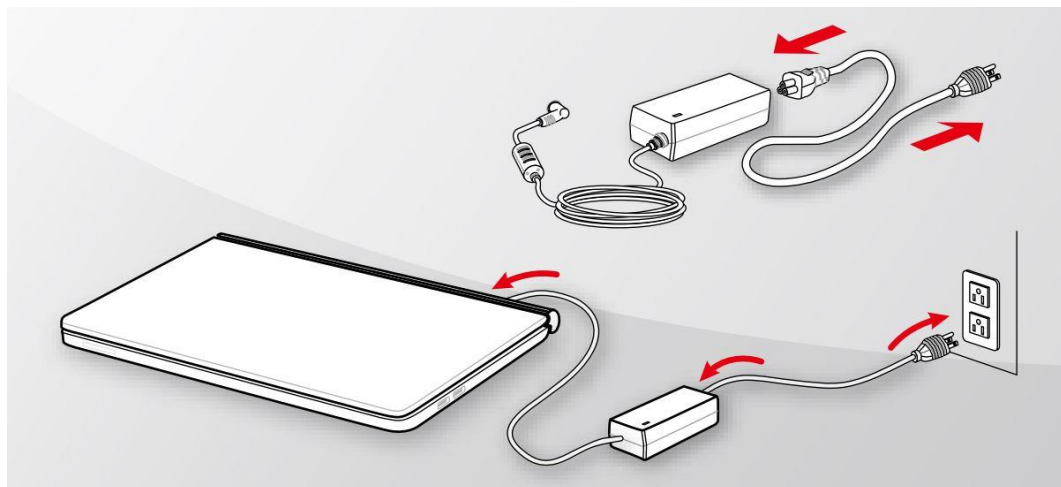


Note: 如果想继续使用快速开机的功能，在 BIOS 更新完成后可以再回到设定页面进行设定。

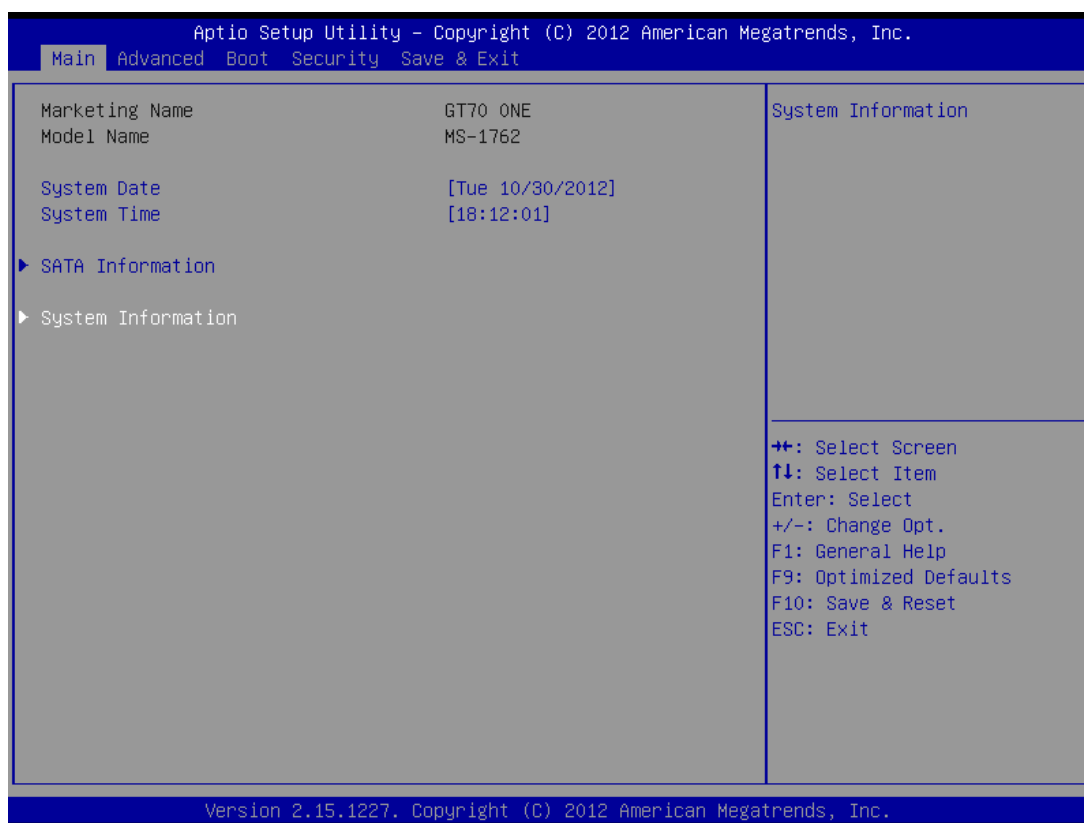
20. 完成上述动作后,请将系统直接关机



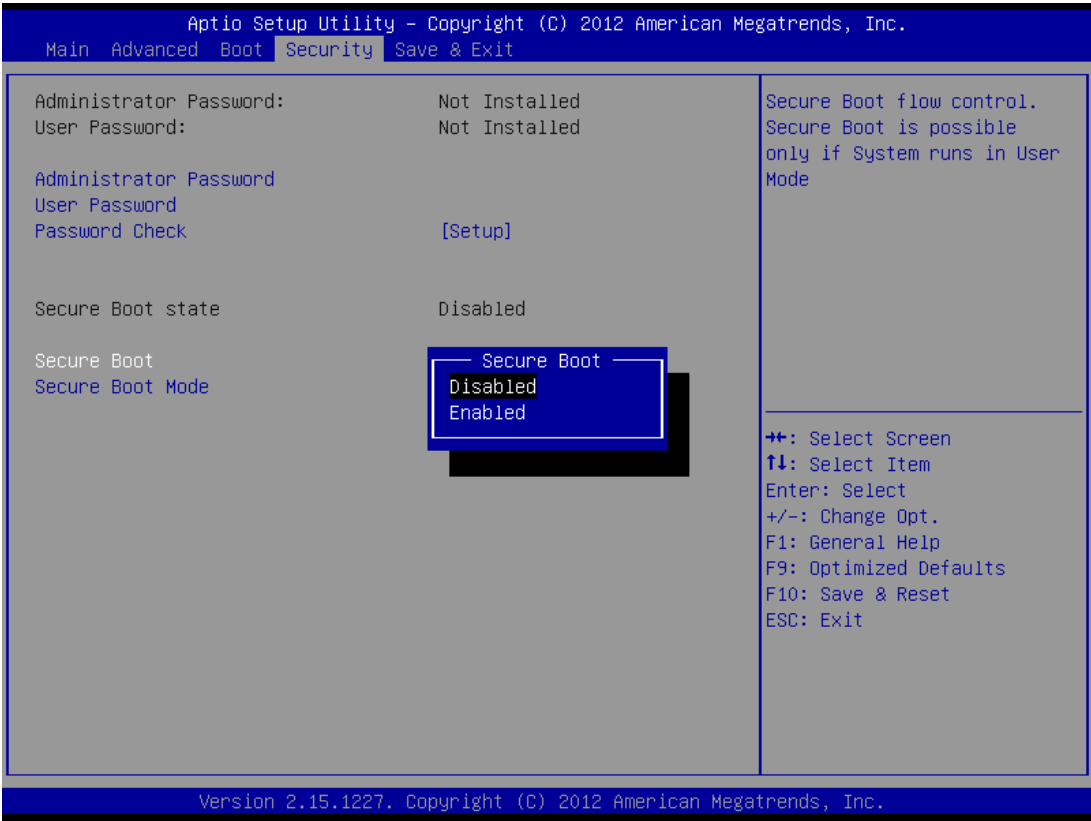
21. 将欲更新 BIOS 的 Notebook 接上电源供应器，操作过程中请保持持续供电的状态。



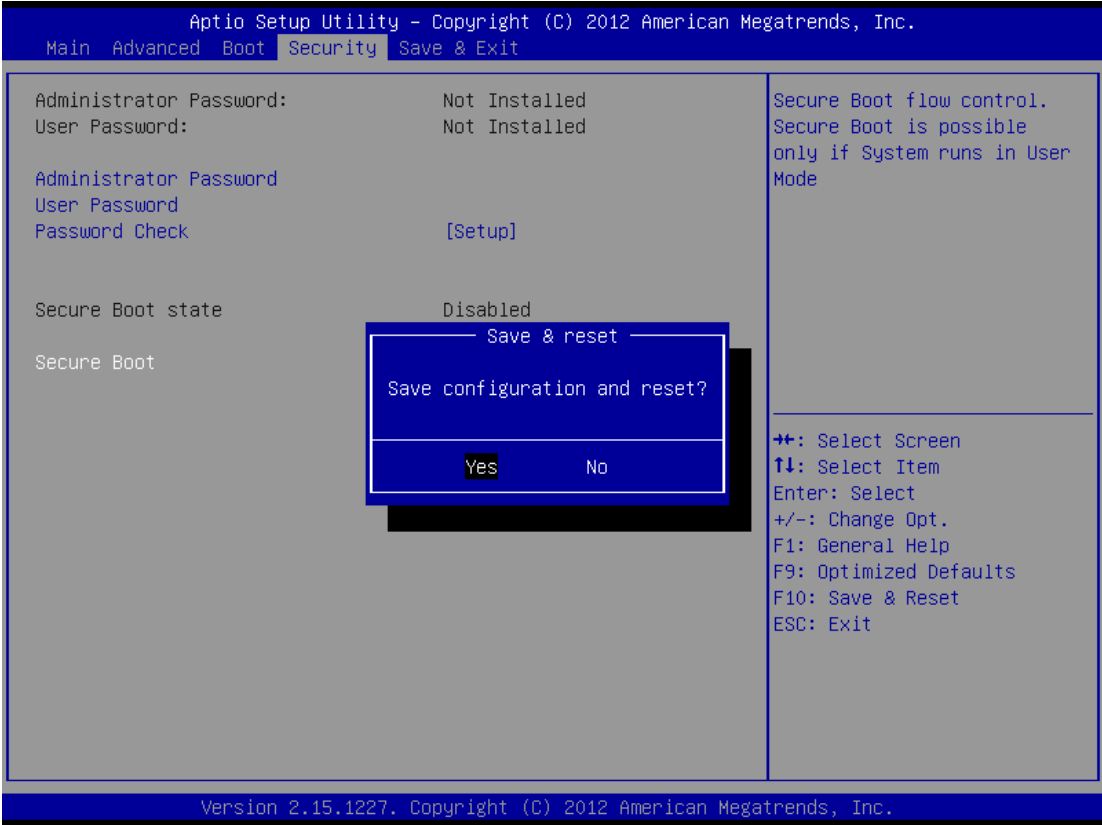
22. 按下电源键后,屏幕上出现 MSI LOGO 时,请先按下 [DEL]键进入 BIOS 设定画面。



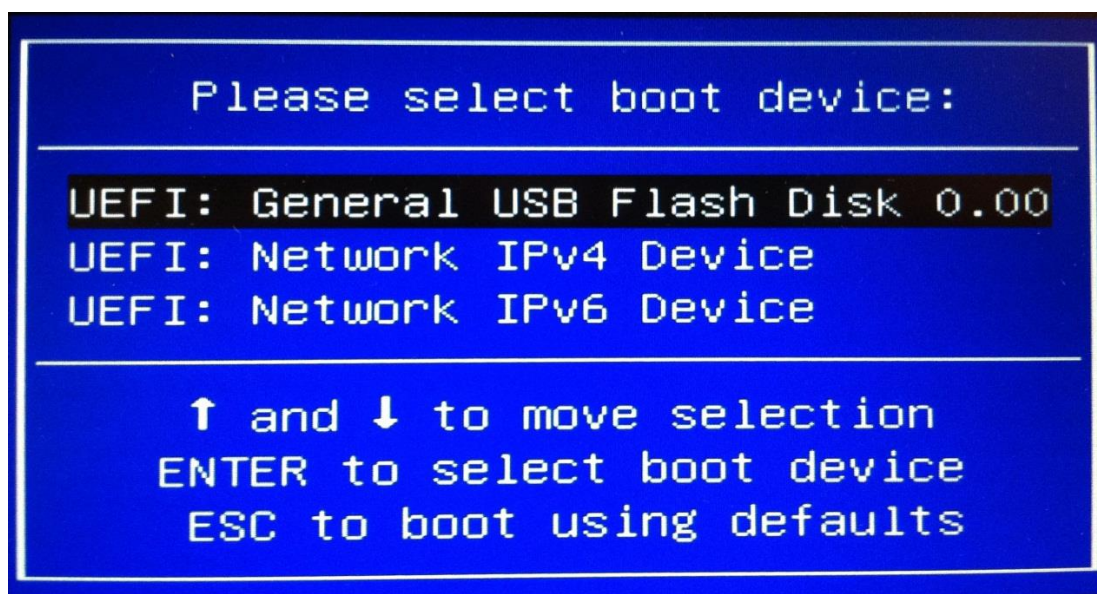
23. 利用箭头键进行操作，移至 Security 下的[Secure Boot]，修改成[Disabled].



24. 修改后请接上制作完成的随身碟，并按下[F10]储存并离开 BIOS 设定画面。



25. 重新启动出现 MSI LOG 时,请按下 F11 键,画面上会出现快速开机的选单,并利用上/下键选择随身碟进行开机.



26. 开机过程会询问是否更新 BIOS,可按[q]键离开,或是按下任一键开始进行更新.



27. 完成更新后请输入 " **RESET** " 并按下 ENTER 键进行重新启动的动作

```

10/26/12  04:28p                43  FLASH.NSH
10/26/12  04:28p                47  FLASH_ME.NSH
      4 File(s)   8,721,098 bytes
      2 Dir(s)

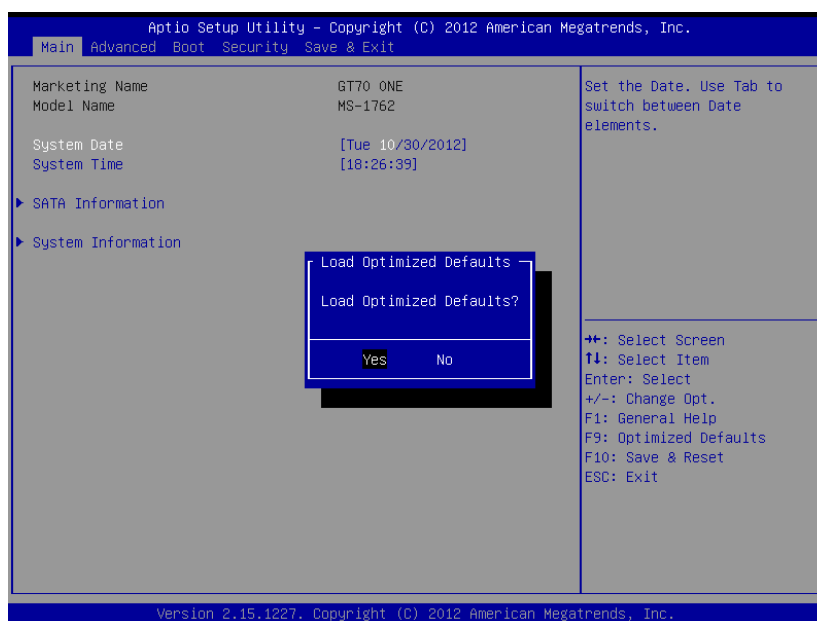
      保存屏幕
fs4:\E1762IMS.50R> flash
flash> AfuEfixGfi E1762IMS.50R /p /b /n /k /r
+-----+
|               AMI Firmware Update Utility  v3.03.00               |
|      Copyright (C)2012 American Megatrends Inc. All Rights Reserved.      |
+-----+

Reading flash ..... done
- ME Data Size checking . ok
Secure Flash enabled, recalculate ROM size with signature...
- FFS checksums ..... ok
Loading capsule to secure memory buffer ... done
Erasing Boot Block ..... done
Updating Boot Block ..... done
Verifying Boot Block ..... done
Erasing Main Block ..... done
Updating Main Block ..... done
Verifying Main Block ..... done
Erasing NVRAM Block ..... done
Updating NVRAM Block ..... done
Verifying NVRAM Block ..... done
Erasing NCB Block ..... done
Updating NCB Block ..... done
Verifying NCB Block ..... done

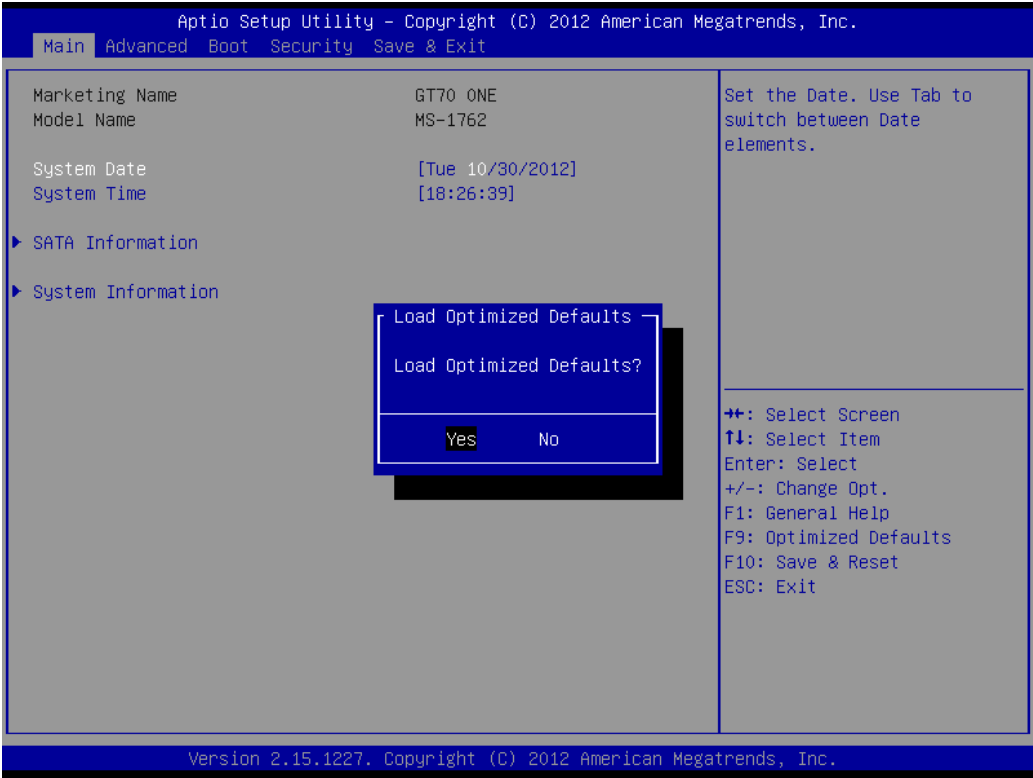
fs4:\E1762IMS.50R> reset_

```

28. 当屏幕一出现 MSI LOGO 时, 请先按[DEL]键进入 BIOS 设定页面.



29. 按下[F9]键, 加载 BIOS 默认值.



30. 按下[F10]键，储存并离开 BIOS 设定画面，以上即完成 BIOS 更新动作。

