

# MS-9A69U1

Industrial Data Machine



## Copyright Notice

The material in this document is the intellectual property of **MICRO-STAR INTERNATIONAL**. We take every care in the preparation of this document, but no guarantee is given as to the correctness of its contents. Our products are under continual improvement and we reserve the right to make changes without notice.

## Trademarks

All trademarks are the properties of their respective owners.

## Revision

Revision	Date
V1.2	2020/12

## Technical Support

If a problem arises with your system and no solution can be obtained from the user's manual, please contact your place of purchase or local distributor. Alternatively, please visit the MSI website for technical guide, BIOS updates, driver updates and other information, or contact our technical staff via <https://www.msi.com/support/>

## Safety Instructions

- Always read the safety instructions carefully.
- Keep this User's Manual for future reference.
- Keep this equipment away from humidity.
- Lay this equipment on a reliable flat surface before setting it up.
- The openings on the enclosure are for air convection hence protects the equipment from overheating. **DO NOT COVER THE OPENINGS.**
- Make sure the voltage of the power source and adjust properly 110/220V before connecting the equipment to the power inlet.
- Place the power cord such a way that people can not step on it. Do not place anything over the power cord.
- Always Unplug the Power Cord before inserting any add-on card or module.
- All cautions and warnings on the equipment should be noted.
- Never pour any liquid into the opening that could damage or cause electrical shock.
- If any of the following situations arises, get the equipment checked by service personnel:
  - The power cord or plug is damaged.
  - Liquid has penetrated into the equipment.
  - The equipment has been exposed to moisture.
  - The equipment does not work well or you can not get it work according to User's Manual.
  - The equipment has dropped and damaged.
  - The equipment has obvious sign of breakage.
- **DO NOT LEAVE THIS EQUIPMENT IN AN ENVIRONMENT UNCONDITIONED, STORAGE TEMPERATURE ABOVE 60°C (140°F), IT MAY DAMAGE THE EQUIPMENT.**

### 警告使用者:

此為甲類資訊技術設備，於居住環境中使用時，可能會造成射頻擾動，在此種情況下，使用者會被要求採取某些適當的對策。

## Chemical Substances Information

In compliance with chemical substances regulations, such as the EU REACH Regulation (Regulation EC No. 1907/2006 of the European Parliament and the Council), MSI provides the information of chemical substances in products at:

[https://www.msi.com/html/popup/csr/evmtprrt\\_pcm.html](https://www.msi.com/html/popup/csr/evmtprrt_pcm.html)

## Battery Information



European Union:

Batteries, battery packs, and accumulators should not be disposed of as unsorted household waste. Please use the public collection system to return, recycle, or treat them in compliance with the local regulations.



廢電池請回收

Taiwan:

For better environmental protection, waste batteries should be collected separately for recycling or special disposal.

California, USA:

The button cell battery may contain perchlorate material and requires special handling when recycled or disposed of in California.

For further information please visit:

<https://www.dtsc.ca.gov/hazardouswaste/perchlorate/>

Danger of explosion if battery is incorrectly replaced. Replace only with the same or equivalent type recommended by the manufacturer.

## CE Conformity

Hereby, Micro-Star International CO., LTD declares that this device is in compliance with the essential safety requirements and other relevant provisions set out in the European Directive.



## FCC Radio Frequency Interference Statement

This equipment has been tested and found to comply with the limits for a Class A digital device, pursuant to Part 15 of the FCC Rules. These limits are designed to provide reasonable protection against harmful interference when the equipment is operated in a commercial environment. This equipment generates, uses and can radiate radio frequency energy and, if not installed and used in accordance with the instruction manual, may cause harmful interference to radio communications. Operation of this equipment in a residential area is likely to cause harmful interference, in which case the user will be required to correct the interference at his own expense.



### NOTICE 1

The changes or modifications not expressly approved by the party responsible for compliance could void the user's authority to operate the equipment.

### NOTICE 2

Shielded interface cables and AC power cord, if any, must be used in order to comply with the emission limits.

This device complies with Part 15 of the FCC Rules. Operation is subject to the following two conditions:

1. this device may not cause harmful interference, and
2. this device must accept any interference received, including interference that may cause undesired operation.

## WEEE Statement

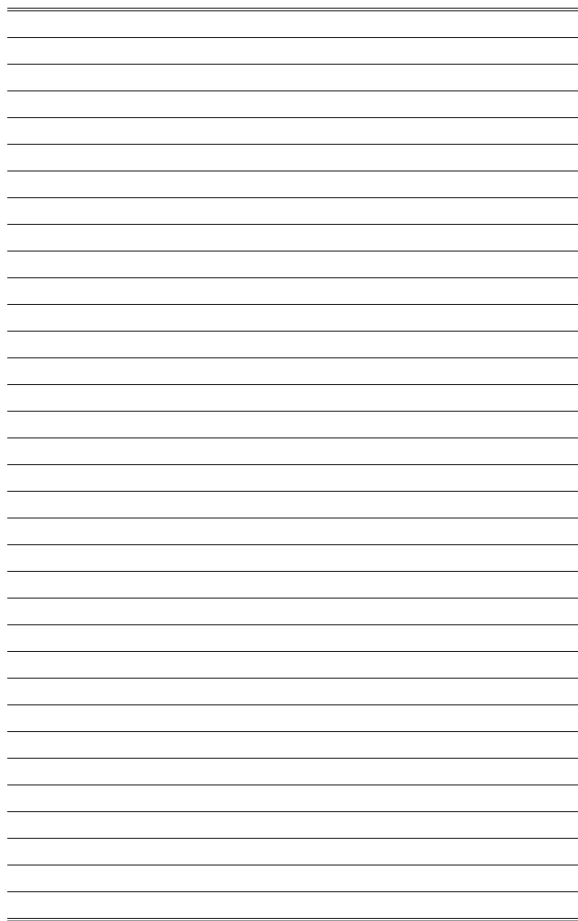
Under the European Union ("EU") Directive on Waste Electrical and Electronic Equipment, Directive 2002/96/EC, which takes effect on August 13, 2005, products of "electrical and electronic equipment" cannot be discarded as municipal waste anymore and manufacturers of covered electronic equipment will be obligated to take back such products at the end of their useful life. MSI will comply with the product take back requirements at the end of life of MSI-branded products that are sold into the EU. You can return these products to local collection points.



# CONTENTS

Copyright Notice .....	ii
Trademarks .....	ii
Revision .....	ii
Technical Support .....	ii
Safety Instructions .....	iii
Chemical Substances Information .....	iv
Battery Information.....	iv
CE Conformity.....	v
FCC Radio Frequency Interference Statement.....	v
WEEE Statement .....	v
<b>1 Overview.....</b>	<b>1-1</b>
Packing Contents.....	1-2
System Overview .....	1-3
System Specifications.....	1-7
Motherboard Jumper.....	1-9
<b>2 System Setup.....</b>	<b>2-1</b>
Installation Tools.....	2-2
Removing the Cover .....	2-3
Installing Memory.....	2-4
Installing the WLAN Card (Optional).....	2-5
Installing the mSATA Card .....	2-6
Installing the LVDS Cable (Optional).....	2-7
Installing the Hard Disk Drive.....	2-8
Wall Mount .....	2-10
DIN Rail Mount 1.....	2-11
DIN Rail Mount 2 (Optional).....	2-12
VESA Mount (Optional).....	2-13
<b>3 BIOS Setup.....</b>	<b>3-1</b>
Entering Setup .....	3-2
The Menu Bar .....	3-4

Main .....	3-5
Advanced .....	3-6
Boot.....	3-12
Security .....	3-13
Chipset.....	3-18
Power.....	3-19
Save & Exit .....	3-21
<b>Appendix WDT &amp; GPIO .....</b>	<b>A-1</b>
WDT Sample Code .....	A-2
GPIO Sample Code .....	A-3





# Chapter 1

## Overview

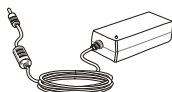
Thank you for choosing the 9A69, an excellent industrial data machine from MSI.

The MS-9A69 eliminates the noise and the risk of fan's failure by wide heatsink as fanless solution. Furthermore, it supports VESA wall-mount interface for various scenarios like digital signage, kiosk, industrial control, and POS with affordable expenditure, which not only meets the demand of Industrial applications but also fulfills the needs of companies, governments, and institutes for general applications.

## Packing Contents



**MS-9A69 Industrial Data Machine**



**Power Adapter**



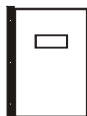
**Power Cord**



**Mounting Brackets**



**SATA Power & Signal Cable**



**User's Manual  
(Optional)**



**Driver/Utility Disc**

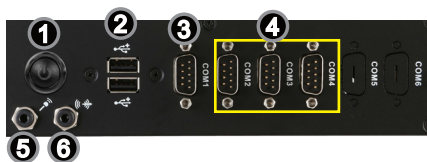
- Please contact us immediately if any of the item is damaged or missing.
- The picture is for your reference only and your packing contents may slightly vary depending on the model you purchased.

## System Overview

### ➤ Top View



### ➤ Front View

**1****Power Button**

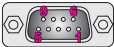
Press the power button to turn the system on or off.

**2****USB 2.0 Port**

The USB (Universal Serial Bus) port is for attaching USB devices such as keyboard, mouse, or other USB-compatible devices.

**3****RS232/422/485 Serial Port: COM1**

The serial port is a 16550A high speed communications port that sends/receives 16 bytes FIFOs. You can attach a serial mouse or other serial devices directly to the connector.

	Mode	Pin	Signal
	RS422	1	TX-B
		2	RX-A
		3	TX-A
		4	RX-B
	RS485	1	DATA-B
		3	DATA-A

**4****RS232 Serial Port: COM2 ~ COM4**

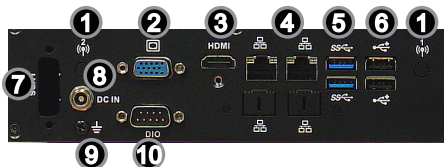
The serial port is a 16550A high speed communications port that sends/receives 16 bytes FIFOs. You can attach a serial mouse or other serial devices directly to the connector.


**5****Microphone**

This connector is provided for for microphones.

**6****Line-Out Jack**

This connector is provided for headphones or speakers.

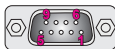
**➤ Rear View**

<b>1</b>	<b>WLAN Antenna Connector (Optional)</b> This connector allows you to connect an external antenna for wireless LAN.
<b>2</b>	<b>VGA Port</b> The DB15-pin female connector is provided for monitor.
<b>3</b>	<b>HDMI Port</b>  The High-Definition Multimedia Interface (HDMI) is an all-digital audio/video interface capable of transmitting uncompressed streams. HDMI supports all TV format, including standard, enhanced, or high-definition video, plus multi-channel digital audio on a single cable.
<b>4</b>	<b>Gigabit LAN Jack</b> The standard RJ-45 LAN jack is for connection to the Local Area Network (LAN). You can connect a network cable to it.
<b>5</b>	<b>USB 3.0 Port</b> The USB 3.0 port is backward-compatible with USB 2.0 devices and supports data transfer rate up to 5 Gbit/s (SuperSpeed).
<b>6</b>	<b>USB 2.0 Port</b> The USB (Universal Serial Bus) port is for attaching USB devices such as keyboard, mouse, or other USB-compatible devices.
<b>7</b>	<b>LVDS (Optional)</b> The LVDS (Low Voltage Differential Signal) connector provides a digital interface typically used with flat panels. After connecting an LVDS interface flat panel to the JLVDS1, be sure to check the panel datasheet and set the LVDS jumper to proper power voltage.
<b>8</b>	<b>Power Jack</b> The power adapter converts AC power to DC power for this jack. Power supplied through this jack supplies power to the system. To prevent damage to the system, always use the supplied power adapter.
<b>9</b>	<b>Grounding Point</b> The connector is provided for connecting a grounding wire.

10

## DIO Port

This port is provided for the General-Purpose Input/Output (GPIO) peripheral module.



PIN	SIGNAL
1	GPO0
2	GPO1
3	GPO2
4	GPO3
5	GPI0
6	GPI1
7	GPI2
8	GPI3
9	VCC5
Shell	GND

## System Specifications

<b>CPU</b>	<ul style="list-style-type: none"> <li>■ Intel® BDW ULT Core™ i3-5010U Processor, Dual Core</li> </ul>
<b>Memory</b>	<ul style="list-style-type: none"> <li>■ 1 x DDR3L 1333/1600 MHz Non-ECC SO-DIMM slot</li> <li>■ Supports the maximum of 8GB</li> </ul>
<b>LAN</b>	<ul style="list-style-type: none"> <li>■ 1 x Intel® I218-LM GbE LAN PHY</li> <li>■ 1 x Intel® I210-AT GbE LAN</li> </ul>
<b>Storage</b>	<ul style="list-style-type: none"> <li>■ 2 x SATA 3Gb/s ports</li> <li>■ 1 x mSATA slot</li> </ul>
<b>Audio</b>	<ul style="list-style-type: none"> <li>■ HDA Codec by ALC887-VD2-CG / ALC888S</li> <li>■ Compliant with Azalia 1.0 specs</li> </ul>
<b>Graphics</b>	<ul style="list-style-type: none"> <li>■ Integrated in CPU               <ul style="list-style-type: none"> <li>• LVDS 18/24-bit Dual Channel, resolution up to 1920 x 1200</li> <li>• VGA port, resolution up to 1920 x 1200</li> <li>• HDMI port, resolution up to 1920 x 1080</li> </ul> </li> </ul>
<b>Front Panel Input/Output</b>	<ul style="list-style-type: none"> <li>■ 2 x USB 2.0 ports</li> <li>■ 1 x Line-Out audio jack</li> <li>■ 1 x Microphone jack</li> <li>■ 4 x Serial ports</li> <li>■ 1 x Power button</li> </ul>
<b>Rear Panel Input/Output</b>	<ul style="list-style-type: none"> <li>■ 1 x VGA port</li> <li>■ 1 x DIO port</li> <li>■ 1 x HDMI port</li> <li>■ 2 x Gigabit LAN jacks</li> <li>■ 2 x USB 2.0 ports</li> <li>■ 2 x USB 3.0 ports</li> <li>■ 1 x DC power jack</li> <li>■ 2 x Wireless LAN antenna connectors (Optional)</li> <li>■ 1 x LVDS (Optional)</li> </ul>

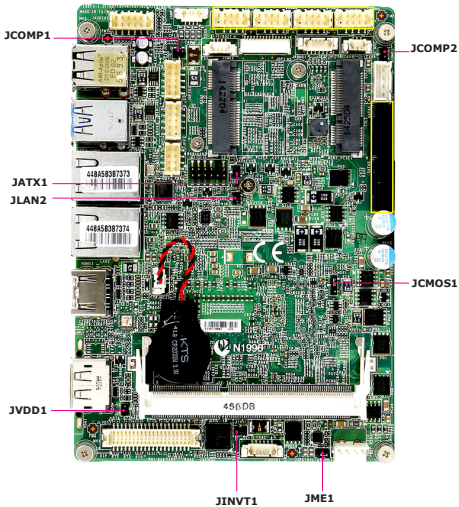
<b>Power Supply</b>	<ul style="list-style-type: none"> <li>■ 65 watt switching power adapter</li> <li>■ Input: 100~240Vac, 1.5A, 50~60Hz</li> <li>■ Output: 19Vdc, 3.42A</li> <li>■ No power consumption for COM1~4</li> </ul> <p><b><u>Important</u></b></p> <p><i>Before powering on the system, recheck the adapter to ensure safety.</i></p>
<b>Dimension &amp; Weight</b>	<ul style="list-style-type: none"> <li>■ 200mm x 150mm x 55mm</li> <li>■ 1.38Kg</li> </ul>
<b>Regulatory Compliance</b>	<ul style="list-style-type: none"> <li>■ Safety: BSMI</li> <li>■ EMI: FCC Class A, CE, RCM, BSMI, VCCI</li> <li>■ RoHS Compliant</li> </ul>
<b>Environmental</b>	<ul style="list-style-type: none"> <li>■ Operating Temperature:               <ul style="list-style-type: none"> <li>• -10 ~ 45°C (HDD)</li> <li>• -10 ~ 55°C (SSD or mSATA)</li> </ul> </li> <li>■ Storage Temperature: -20°C to 80°C</li> <li>■ Humidity: 10% ~ 90% RH, non-condensing</li> </ul>



# Motherboard Jumper

## Important

Avoid adjusting jumpers when the system is on; it will damage the motherboard.



## Clear CMOS Jumper: JCMOS1

There is a CMOS RAM onboard that has a power supply from an external battery to keep the data of system configuration. With the CMOS RAM, the system can automatically boot OS every time it is turned on. If you want to clear the system configuration, set the jumper to clear data.



Normal



Clear CMOS

### Important

*You can clear CMOS by shorting 2-3 pin while the system is off. Then return to 1-2 pin position. Avoid clearing the CMOS while the system is on; it will damage the motherboard.*

## AT/ATX Select Jumper: JATX1

This jumper allows users to select between AT and ATX power.



ATX



AT

## Serial Port Power Jumper: JCOMP1~2

This jumper specifies the operation voltage of the COM serial port.

### JCOMP1 (for COM1 ~ 2)



+5V



+12V

### JCOMP2 (for COM3 ~ 4)



+5V



+12V

## LAN Configure Jumper: JLAN1~2

Use this jumper to specify the operation for LAN.



**On:** Enable security and the INVM lock.

**JLAN1**  
(for LAN1)

**JLAN2**  
(for LAN2)



**Off:** Disable security and the INVM lock.  
(non-secure mode)

### LVDS Power Jumper: JVDD1

Use this jumper to specify the operation voltage of the LVDS interface flat panel.



3V



5V

### LVDS Inverter Power Jumper: JINV1

Use this jumper to specify the operation voltage of the interver interface flat panel.



+5V



+12V

### TXE F/W Jumper: JME1

This jumper is used to enable/disable the Intel TXE F/W.



ME enable



ME disable

# Chapter 2

## System Setup





This chapter provides you with the information on hardware setup procedures. While doing the installation, be careful in holding the components and follow the installation procedures. For some components, if you install in the wrong orientation, the components will not work properly.

Use a grounded wrist strap before handling data machine components. Static electricity may damage the components.

### **Important**

- *Always unplug the power cord before installing any components.*
- *When the operating temperature reaches 40°C or higher, please replace your HDD with SSD (Solid-State Drive) or other types of heat-resistant HDD to protect your HDD from being damaged by high temperature.*

## Installation Tools

	A Phillips (crosshead) screwdriver and a flathead screwdriver, can be used to do most of the installation. Choose one with a magnetic head would be better.
	Pliers, can be used as an auxiliary tool to connect some connectors or cables.
	Forceps, can be used to pick up tiny screws or set up the jumpers.
	Rubber gloves, can prevent yourself from being incised and suffering the static charge.

## Removing the Cover

1. Place the system horizontally on a flat and steady surface. Locate and remove the screws that secure the system cover.



2. Slide the cover carefully sideways and remove it from the system.



## Installing Memory

1. Locate the memory slot.



2. Align the notch on the memory with the key on the slot and insert the memory into the slot at a 45-degree angle.



3. Push the memory gently downwards until the slot clips click and lock the memory in place.

### **Important**

- *You can barely see the golden finger if the DIMM is properly inserted in the DIMM slot.*
- *To uninstall the DIMM, flip the slot clips outwards and the DIMM will be released instantly.*



## Installing the WLAN Card (Optional)

1. Locate the Mini PCIe slot. Remove the Mini PCIe card screw preinstalled on the motherboard.



2. Insert the wireless LAN card into the slot at a 45-degree angle.



3. Push the card gently downwards and fasten it with a screw.



## Installing the mSATA Card

1. Locate the Mini PCIe slot. Remove the screw preinstalled on the motherboard.



2. Insert the mSATA card into the slot at a 45-degree angle.

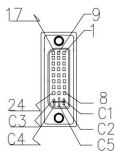


3. Push the card gently downwards and fasten it with a screw.



## Installing the LVDS Cable (Optional)

1. Remove the screw and LVDS brackets with a pliers.



Pin	Signal	Pin	Signal	Pin	Signal
1	L_BKLT_CTRL#	13	LCD_VDD	C1	+12V
2	LVDS_BLON	14	LCD_VDD	C2	LVDS_DETECT#_C
3	LVDSA_DATA0	15	LVDSB_DATA0	C3	+12V
4	LVDSA_DATA#0	16	LVDSB_DATA#0	C4	GND
5	LVDSA_DATA1	17	LVDSB_DATA1	C5	GND
6	LVDSA_DATA#1	18	LVDSB_DATA#1		
7	LVDSA_DATA2	19	LVDSB_DATA2		
8	LVDSA_DATA#2	20	LVDSB_DATA#2		
9	LVDSA_DATA3	21	LVDSB_DATA3		
10	LVDSA_DATA#3	22	LVDSB_DATA#3		
11	LVDSA_CLK	23	LVDSB_CLK		
12	LVDSA_CLK#	24	LVDSB_CLK#		

2. Connect the LVDS cable to LVDS connector on the motherboard.



3. Fix the other connector with two hexagonal screws.



## Installing the Hard Disk Drive

1. Flip over the system cover and locate the HDD bracket. Remove the sticker film to uncover the thermal paste.



2. Insert the HDD into the HDD bracket with screw holes aligned.



3. Tighten the screws to fix the HDD to the bracket.



### **Important**

*Please make sure the HDD is properly and completely fixed to the bracket.*

4. Connect the SATA signal & power cable to the HDD.



5. Connect the SATA signal & power cable to the motherboard to complete the installation.



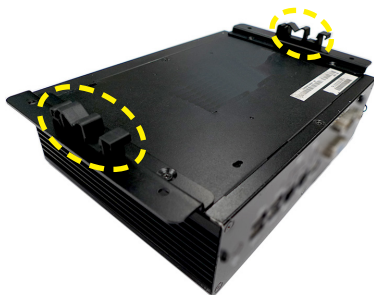
## Wall Mount

1. Flip over the system and locate the bracket screw holes.
2. Place the brackets along the sides with screw holes aligned.
3. Fasten the screws to fix the brackets.



## DIN Rail Mount 1

1. Check the accessory box for the DIN rails.
2. Put the DIN rails on the wall mount brackets with the hooks aligned.



3. Insert screws through the wall mount brackets into the DIN rails and tighten until each DIN rail is secure.



## DIN Rail Mount 2 (Optional)

1. Check the VESA mount plate for the DIN rail screw holes.



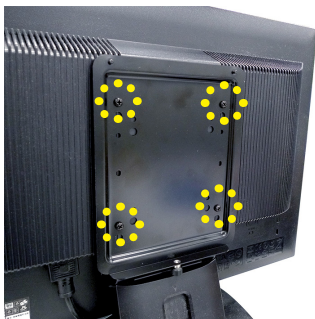
2. Put the DIN rails on the VESA mount plate with screw holes aligned.
3. Insert screws through the VESA mount plate into the DIN rails and tighten until each DIN rail is secure.
4. Mount the VESA mount plate onto the system and tighten the thumbscrew of the VESA mount plate.



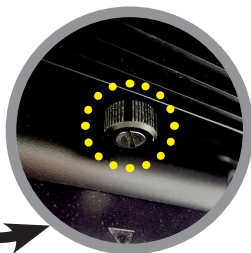


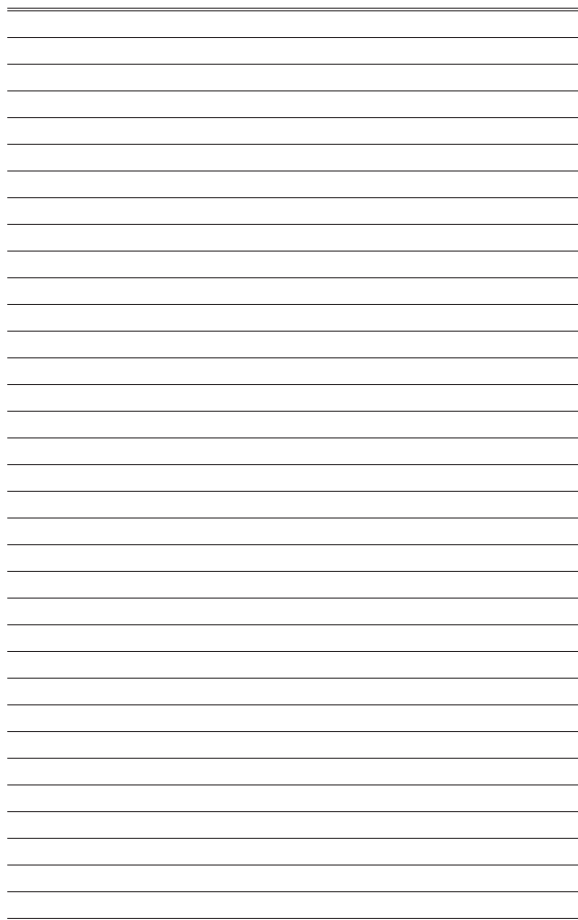
## VESA Mount (Optional)

1. Locate the VESA mount screw holes on the intended device.
2. Fasten the VESA mount plate to the device with the supplied screws.



3. Mount the system onto the VESA mount plate.
4. Tighten the thumbscrew at the bottom of the VESA mount plate to secure the system.





# Chapter 3

## BIOS Setup

This chapter provides information on the BIOS Setup program and allows you to configure the system for optimum use.

You may need to run the Setup program when:

- An error message appears on the screen during the system booting up, and requests you to run SETUP.
- You want to change the default settings for customized features.

### *Important*

- *Please note that BIOS update assumes technician-level experience.*
- *As the system BIOS is under continuous update for better system performance, the illustrations in this chapter should be held for reference only.*

## Entering Setup

Power on the data machine and the system will start POST (Power On Self Test) process. When the message below appears on the screen, press <DEL> or <F2> key to enter Setup.

### **Press <DEL> or <F2> to enter SETUP**

If the message disappears before you respond and you still wish to enter Setup, restart the system by turning it OFF and On or pressing the RESET button. You may also restart the system by simultaneously pressing <Ctrl>, <Alt>, and <Delete> keys.

### **Important**

*The items under each BIOS category described in this chapter are under continuous update for better system performance. Therefore, the description may be slightly different from the latest BIOS and should be held for reference only.*

## Control Keys

← →	Select Screen
↑ ↓	Select Item
Enter	Select
+ -	Change Option
F1	General Help
F7	Previous Values
F9	Optimized Defaults
F10	Save & Exit
Esc	Exit

## Getting Help

After entering the Setup menu, the first menu you will see is the Main Menu.

### Main Menu

The main menu lists the setup functions you can make changes to. You can use the arrow keys ( ↑ ↓ ) to select the item. The on-line description of the highlighted setup function is displayed at the bottom of the screen.

### Sub-Menu

If you find a right pointer symbol appears to the left of certain fields that means a sub-menu can be launched from this field. A sub-menu contains additional options for a field parameter. You can use arrow keys ( ↑ ↓ ) to highlight the field and press <Enter> to call up the sub-menu. Then you can use the control keys to enter values and move from field to field within a sub-menu. If you want to return to the main menu, just press the <Esc>.

## General Help <F1>

The BIOS setup program provides a General Help screen. You can call up this screen from any menu by simply pressing <F1>. The Help screen lists the appropriate keys to use and the possible selections for the highlighted item. Press <Esc> to exit the Help screen.

## The Menu Bar



### ► Main

Use this menu for basic system configurations, such as time, date, etc.

### ► Advanced

Use this menu to set up the items of special enhanced features.

### ► Boot

Use this menu to specify the priority of boot devices.

### ► Security

Use this menu to set supervisor and user passwords.

### ► Chipset

This menu controls the advanced features of the onboard chipsets.

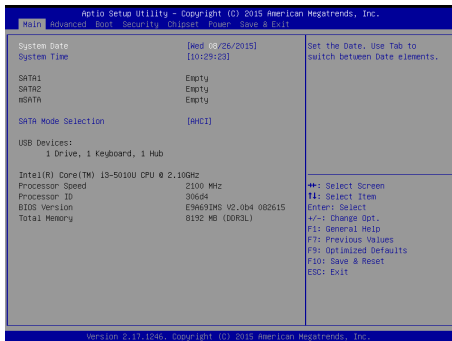
### ► Power

Use this menu to specify your settings for power management.

### ► Save & Exit

This menu allows you to load the BIOS default values or factory default settings into the BIOS and exit the BIOS setup utility with or without changes.

# Main



## ► System Date

This setting allows you to set the system date. The date format is <Day>, <Month> <Date> <Year>.

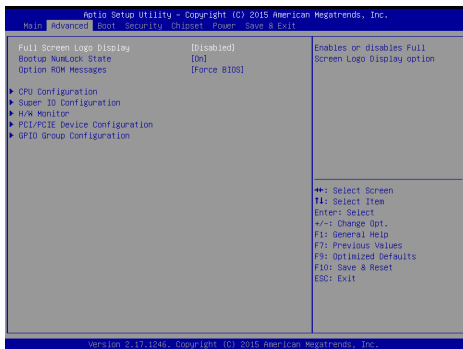
## ► System Time

This setting allows you to set the system time. The time format is <Hour> <Minute> <Second>.

## ► SATA Mode Selection

This setting specifies the SATA controller mode.

## Advanced



### ► Full Screen Logo Display

This BIOS feature determines if the BIOS should hide the normal POST messages with the motherboard or system manufacturer's full-screen logo.

When it is enabled, the BIOS will display the full-screen logo during the boot-up sequence, hiding normal POST messages.

When it is disabled, the BIOS will display the normal POST messages, instead of the full-screen logo.

Please note that enabling this BIOS feature often adds 2-3 seconds of delay to the booting sequence. This delay ensures that the logo is displayed for a sufficient amount of time. Therefore, it is recommended that you disable this BIOS feature for a faster boot-up time.

### ► Bootup NumLock State

This setting is to set the Num Lock status when the system is powered on. Setting to [On] will turn on the Num Lock key when the system is powered on. Setting to [Off] will allow users to use the arrow keys on the numeric keypad.

### ► Option ROM Messages

This item is used to determine the display mode when an optional ROM is initialized during POST. When set to [Force BIOS], the display mode used by AMI BIOS is used. Select [Keep Current] if you want to use the display mode of optional ROM.



## ► CPU Configuration



### ► Hyper-Threading

The processor uses Hyper-Threading technology to increase transaction rates and reduces end-user response times. The technology treats the two cores inside the processor as two logical processors that can execute instructions simultaneously. In this way, the system performance is highly improved. If you disable the function, the processor will use only one core to execute the instructions.

### ► Active Processor Cores

This setting specifies the number of active processor cores.

### ► Execute Disable Bit

Intel's Execute Disable Bit functionality can prevent certain classes of malicious "buffer overflow" attacks when combined with a supporting operating system. This functionality allows the processor to classify areas in memory by where application code can execute and where it cannot. When a malicious worm attempts to insert code in the buffer, the processor disables code execution, preventing damage or worm propagation.

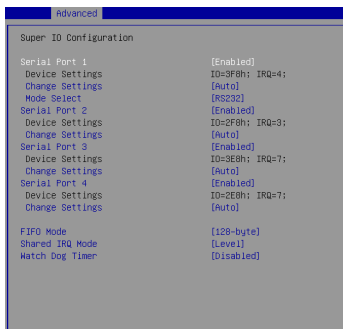
### ► Intel Virtualization Technology

Virtualization enhanced by Intel Virtualization Technology will allow a platform to run multiple operating systems and applications in independent partitions. With virtualization, one computer system can function as multiple "Virtual" systems.

### ► EIST

EIST (Enhanced Intel SpeedStep Technology) allows the system to dynamically adjust processor voltage and core frequency, which can result in decreased average power consumption and decreased average heat production. When disabled, the processor will return the actual maximum CPUID input value of the processor when queried.

### ► Super IO Configuration



### ► Serial Port 1/ 2/ 3/ 4

This setting enables/disables the specified serial port.

#### ► Change Settings

This setting is used to change the address & IRQ settings of the specified serial port.

#### ► Mode Select

Select an operation mode for the specified serial port.

### ► FIFO Mode

This setting controls the FIFO data transfer mode.

### ► Shared IRQ Mode

This setting provides the system with the ability to share interrupts among its serial ports.

### ► Watch Dog Timer

You can enable the system watch-dog timer, a hardware timer that generates a reset when the software that it monitors does not respond as expected each time the watch dog polls it.

### ► H/W Monitor

These items display the current status of all monitored hardware devices/components such as voltages, temperatures and all fans' speeds.

Advanced	
PC Health Status	
Thermal Shutdown	[Enabled]
CPU temperature	: +37 C
System temperature	: +30 C
VCC_CORE	: +1,576 V
VCC5	: +5,003 V
+12V	: +12,056 V
VCC3V	: +3,248 V
VSB3V	: +3,264 V
VBAT	: +3,248 V

### ► Thermal Shutdown

This setting enables/disables the thermal shutdown function for system thermal protection.

**► PCI/PCIE Device Configuration****► EHCI**

This setting disables/enables the USB EHCI controller. The Enhanced Host Controller Interface (EHCI) specification describes the register-level interface for a Host Controller for the Universal Serial Bus (USB) Revision 2.0.

**► XHCI Mode**

This setting disables/enables the USB XHCI controller. The eXtensible Host Controller Interface (XHCI) is a computer interface specification that defines a register-level description of a Host Controller for Universal Serial bus (USB), which is capable of interfacing to USB 1.0, 2.0, and 3.0 compatible devices. The specification is also referred to as the USB 3.0 Host Controller specification.

**► Legacy USB Support**

Set to [Enabled] if you need to use any USB 1.1/2.0 device in the operating system that does not support or have any USB 1.1/2.0 driver installed, such as DOS and SCO Unix.

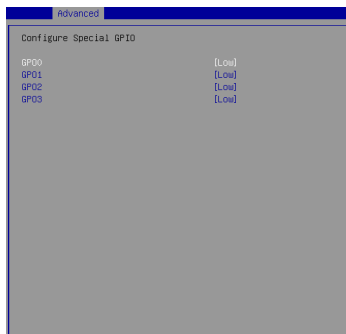
**► Audio Controller**

This setting enables/disables the onboard audio controller.

**► Launch OnBoard LAN OpROM**

These settings enable/disable the initialization of the onboard/onchip LAN Boot ROM during bootup. Selecting [Disabled] will speed up the boot process.

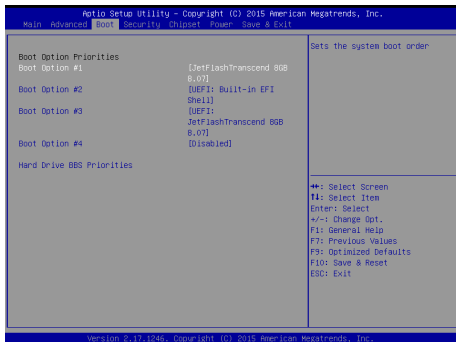
### ► GPIO Group Configuration



### ► GPIO0 ~ GPIO3

These settings control the operation mode of the specified GPIO.

## Boot



### ► Boot Option Priorities

This setting allows users to set the sequence of boot devices where BIOS attempts to load the disk operating system.

### ► Hard Drive BBS Priorities

This setting allows users to set the priority of the specified devices. First press <Enter> to enter the sub-menu. Then you may use the arrow keys ( ↑↓ ) to select the desired device, then press <+>, <-> or <PageUp>, <PageDown> key to move it up/down in the priority list. Security

## Security



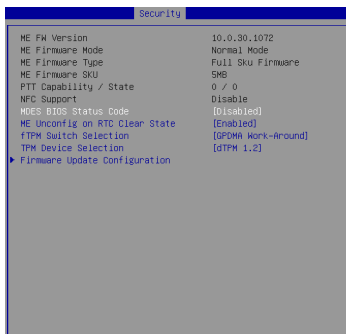
### ► Administrator Password

Administrator Password controls access to the BIOS Setup utility.

### ► User Password

User Password controls access to the system at boot and to the BIOS Setup utility.

## ► PCH-FW Configuration



### ► ME FW Version, ME Firmware Mode/ Type/ SKU

These settings show the firmware information of the Intel ME (Management Engine).

### ► MDES BIOS Status Code

This setting enables/disables the MDES BIOS status code.

### ► ME Unconfig on RTC Clear State

This setting enables/disables ME Firmware Un-configure on RTC clear state.

### ► TPM Switch Selection, TPM Device Selection

These settings help users select the TPM switch and device.



► **Firmware Update Configuration**



► **ME FW Image Re-Flash**

This setting enables/disables the ME FW image reflash.

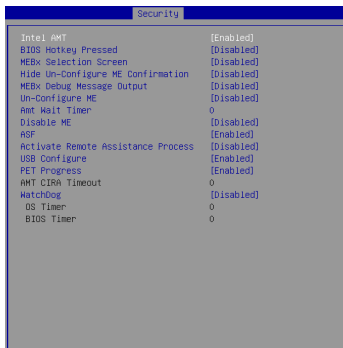
### ► Intel(R) Anti-Theft Technology Configuration

Intel Anti-Theft Technology is hardware-based technology that can lock a lost or stolen system so that personal confidential information is protected and inaccessible by unauthorized users.



### ► AMT Configuration

Intel Active Management Technology (AMT) is hardware-based technology for remotely managing and securing PCs out-of-band.



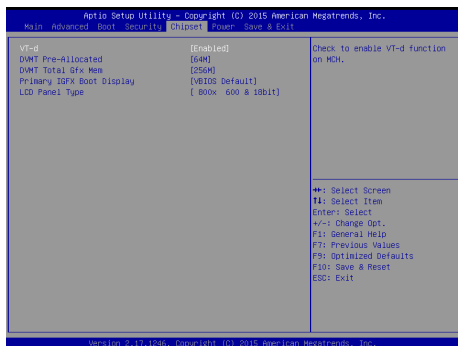
### ► Serial Port Console Redirection



### ► Console Redirection

Console Redirection operates in host systems that do not have a monitor and keyboard attached. This setting enables/disables the operation of console redirection. When set to [Enabled], BIOS redirects and sends all contents that should be displayed on the screen to the serial COM port for display on the terminal screen. Besides, all data received from the serial port is interpreted as keystrokes from a local keyboard.

## Chipset



### ► VT-d

Intel Virtualization Technology for Directed I/O (Intel VT-d) provides the capability to ensure improved isolation of I/O resources for greater reliability, security, and availability.

### ► DVMT Pre-Allocated

This setting defines the DVMT pre-allocated memory. Pre-allocated memory is the small amount of system memory made available at boot time by the system BIOS for video. Pre-allocated memory is also known as locked memory. This is because it is “locked” for video use only and as such, is invisible and unable to be used by the operating system.

### ► DVMT Total Gfx Mem

This setting specifies the memory size for DVMT.

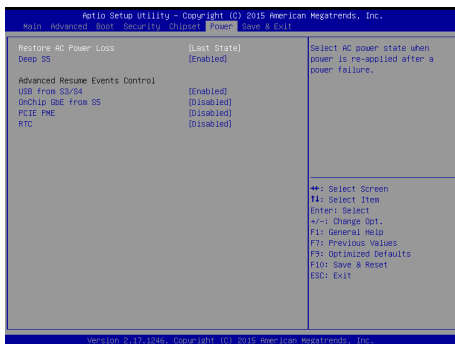
### ► Primary IGFX Boot Display

Use the field to select the type of device you want to use as the display(s) of the system.

### ► LCD Panel Type

This setting allows you to set the resolution of the LCD display.

## Power



### ► Restore AC Power Loss

This setting specifies whether your system will reboot after a power failure or interrupt occurs. Available settings are:

[Power Off]	Leaves the computer in the power off state.
[Power On]	Leaves the computer in the power on state.
[Last State]	Restores the system to the previous status before power failure or interrupt occurred.

### ► Deep S5

The setting enables/disables the Deep S5 power saving mode. S5 is almost the same as G3 Mechanical Off, except that the PSU still supplies power, at a minimum, to the power button to allow return to S0. A full reboot is required. No previous content is retained. Other components may remain powered so the computer can “wake” on input from the keyboard, clock, modem, LAN, or USB device.

### **\*\* Advanced Resume Events Control \*\***

#### **► USB from S3/S4**

The item allows the activity of the USB device to wake up the system from S3/S4 sleep state.

#### **► OnChip GbE from S5**

This field specifies whether the system will be awakened from power saving modes when activity or input signal of onchip LAN is detected.

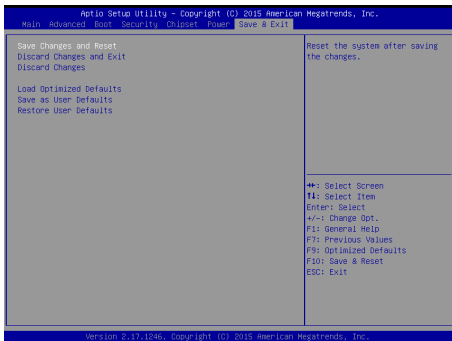
#### **► PCIE PME**

This field specifies whether the system will be awakened from power saving modes when activity or input signal of onboard PCIE PME is detected.

#### **► RTC**

When [Enabled], you can set the date and time at which the RTC (real-time clock) alarm awakens the system from suspend mode.

## Save & Exit



### ► Save Changes and Reset

Save changes to CMOS and reset the system.

### ► Discard Changes and Exit

Abandon all changes and exit the Setup Utility.

### ► Discard Changes

Abandon all changes.

### ► Load Optimized Defaults

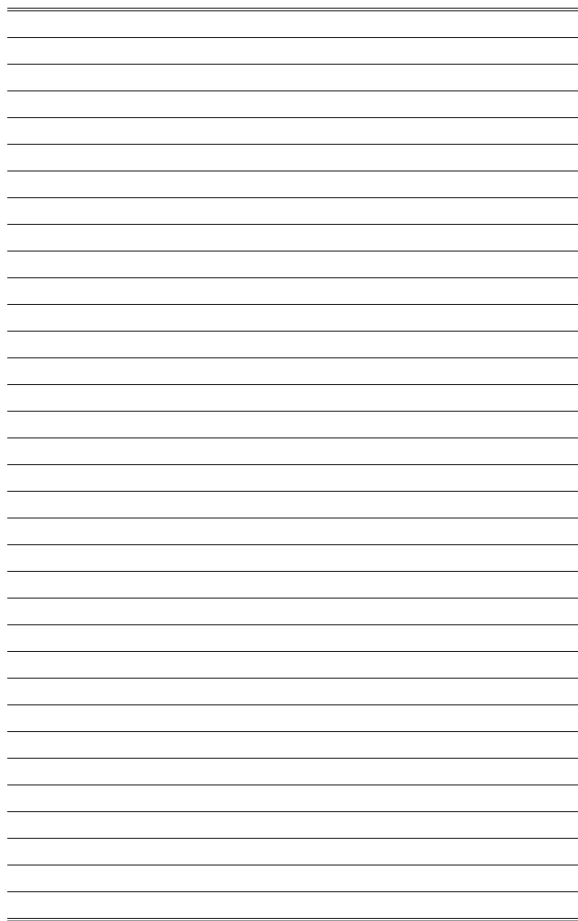
Use this menu to load the default values set by the motherboard manufacturer specifically for optimal performance of the motherboard.

### ► Save as User Defaults

Save changes as the user's default profile.

### ► Restore User Defaults

Restore the user's default profile.





# Appendix

## WDT & GPIO

This appendix provides the sample codes of WDT (Watch Dog Timer) and GPIO (General Purpose Input/Output).

## WDT Sample Code

```

SIO_INDEX_Port    equ 04Eh
SIO_DATA_Port     equ 04Fh
SIO_UnLock_Value  equ 087h
SIO_Lock_Value    equ 0AAh
watchDog_LDN      equ 007h
WDT_UNIT          equ 60h    ;60h=second, 68h=minute, 40h=Disabled watchdog timer
WDT_Timer         equ 30     ;ex. 30 seconds

```

Sample code:

```

;Enable config mode
mov     dx, SIO_INDEX_Port
mov     al, SIO_UnLock_Value
out     dx, al
jmp     short $+2           ;Io_delay
jmp     short $+2           ;Io_delay
out     dx, al

;Change to WDT
mov     dx, SIO_INDEX_Port
mov     al, 07h
out     dx, al
mov     dx, SIO_DATA_Port
mov     al, watchDog_LDN
out     dx, al

;Active WDT
mov     dx, SIO_INDEX_Port
mov     al, 30h
out     dx, al
mov     dx, SIO_DATA_Port
in      al, dx
or      al, 01h
out     dx, al

;set timer
mov     dx, SIO_INDEX_Port
mov     al, 0F6h
out     dx, al
mov     dx, SIO_DATA_Port
mov     al, WDT_Timer
out     dx, al

;set UINT
mov     dx, SIO_INDEX_Port
mov     al, 0F5h
out     dx, al
mov     dx, SIO_DATA_Port
mov     al, WDT_UNIT
out     dx, al

;enable reset
mov     dx, SIO_INDEX_Port
mov     al, 0FAh
out     dx, al
mov     dx, SIO_DATA_Port
in      al, dx
or      al, 01h
out     dx, al

;close config mode
mov     dx, SIO_INDEX_Port
mov     al, SIO_Lock_Value
out     dx, al

```

## GPIO Sample Code

- GPI 0 ~ GPI 3

	GPI 0	GPI 1	GPI 2	GPI 3				
IO Address								
SIO_GPIO_Register	82h	82h	82h	82h				
Bit	0	1	2	3				
Sample code	#1	#1	#1	#1				

- GPO 0 ~ GPO 3

	GPO 0	GPO 1	GPO 2	GPO 3				
IO Address								
SIO_GPIO_Register	81h	81h	81h	81h				
Bit	4	5	6	7				
Sample code	#2	#2	#2	#2				

```

SIO_INDEX_Port      equ    04Eh
SIO_DATA_Port       equ    04Fh
SIO_UnLock_Value    equ    087h
SIO_Lock_Value      equ    0AAh
SIO_LDN_GPIO        equ    06h
SIO_GPIO_Data       equ    081h
SIO_GPIO_Status     equ    082h
GPI_0               equ    00000001b
GPO_0               equ    00010000b

```

### Sample Code:

**#1 : Get GPI 0 status**

**; Enable config mode**

```

mov    dx, SIO_INDEX_Port
mov    al, SIO_UnLock_Value
out    dx, al
jmp     short $+2          ;Io_delay
jmp     short $+2          ;Io_delay
out    dx, al

```

**; Switch GPIO Configuration for SIO LDN 0x06**

```

mov    dx, SIO_INDEX_Port
mov    al, 07h
out    dx, al
mov    dx, SIO_DATA_Port
mov    al, SIO_LDN_GPIO
out    dx, al

```

**; Get GPI 0 Pin Status Register**

```

mov    dx, SIO_INDEX_Port
mov    al, SIO_GPIO_Status
out    dx, al
mov    dx, SIO_DATA_Port
in     al, dx                ;al bit0 = GPI 0 status

```

## ***; Exit SIO***

```

mov    dx, SIO_INDEX_Port
mov    al, SIO_Lock_Value
out    dx, al

```

## **#2 : Set GPO 0 to high**

### ***; Enable config mode***

```

mov    dx, SIO_INDEX_Port
mov    al, SIO_UnLock_Value
out    dx, al
jmp    short $+2            ;Io_delay
jmp    short $+2            ;Io_delay
out    dx, al

```

### ***; Switch GPIO Configuration for SIO LDN 0x06***

```

mov    dx, SIO_INDEX_Port
mov    al, 07h
out    dx, al
mov    dx, SIO_DATA_Port
mov    al, SIO_LDN_GPIO
out    dx, al

```

### ***; Set GPO 0 Register***

```

mov    dx, SIO_INDEX_Port
mov    al, SIO_GPIO_Data
out    dx, al
mov    dx, SIO_DATA_Port
in     al, dx
and    al, not GPO_0
or     al, GPO_0
out    dx, al

```

## ***; Exit SIO***

```

mov    dx, SIO_INDEX_Port
mov    al, SIO_Lock_Value
out    dx, al

```