



EV Charger Life

EV Charging Bluetooth Settings

User Guide

Contents

Contents	2
1. The Bluetooth Function of EV Charger Life	3
2. Connecting Through Bluetooth for the First Time	3
3. Remove Bluetooth Device	5
3.1 Removal Through the EV Life Mobile App	5
3.2 Removal Through the External Hardware.....	8

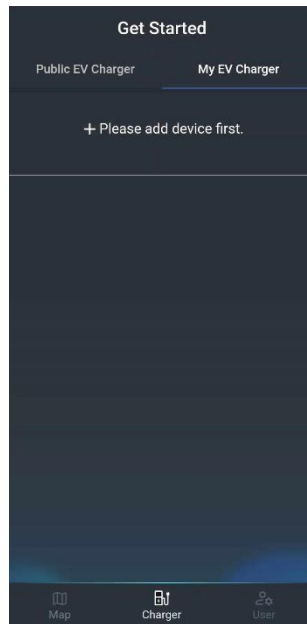
1.The Bluetooth Function of EV Charger Life

Users can use the EV Life mobile app’s Bluetooth function to adjust the basic settings, set the charging schedule, and update the firmware of EV Charger Life.

2.Connecting Through Bluetooth for the First Time

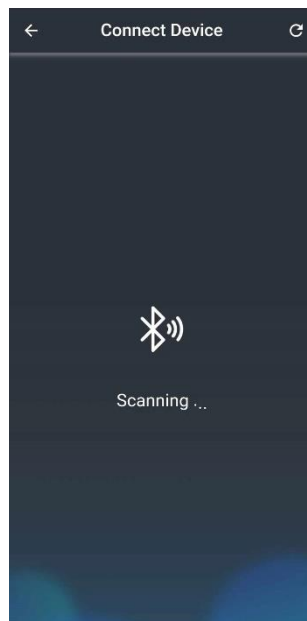
Charging Pile can be added through the EV Life mobile app the first time they are turned on.


Step 1. Open the EV Life mobile app, tap “Charger”, and tap on “My EV Charger” up top.



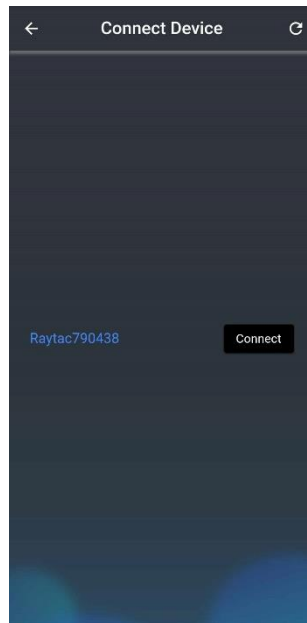
Step 2. Tap “+ Please add device first.” to search for the charging pile.

(Please note that your phone’s Bluetooth must be on).

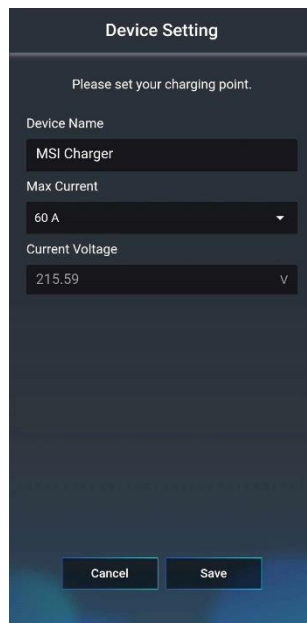


Note: If no devices were found, tap the top right corner  to search again.

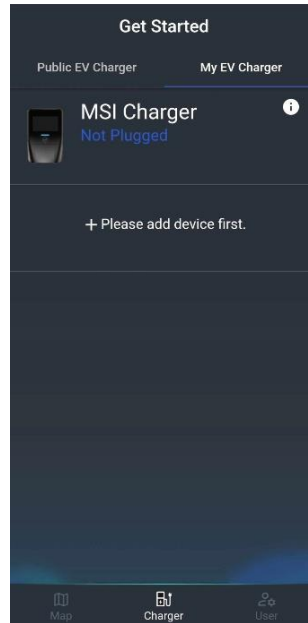
Step 3. Tap “Connect” to Raytacxxxxxx (e.g., Raytac790438).



Step 4. Enter the “Device Setting” page to set the charging pile’s “Device Name” and the “Max Current” (maximum output current). Once you’ve updated the settings, tap “Save”.



Step 5. The charging pile has been added.



Note: Once a charging pile is bound to your device, other Bluetooth devices will not be able to find the charging pile.

3.Remove Bluetooth Device

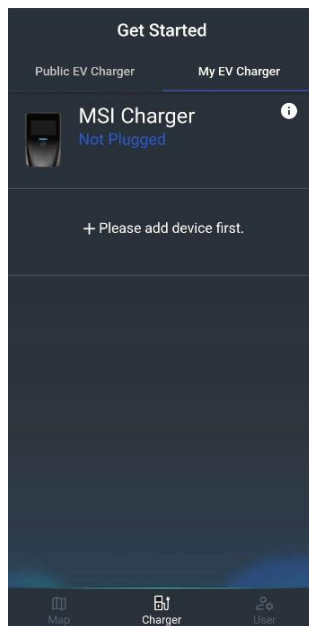
There are two ways to remove a charging pile: (1) removal through the EV Life mobile app and (2) removal through the external hardware.

3.1 Removal Through the EV Life Mobile App

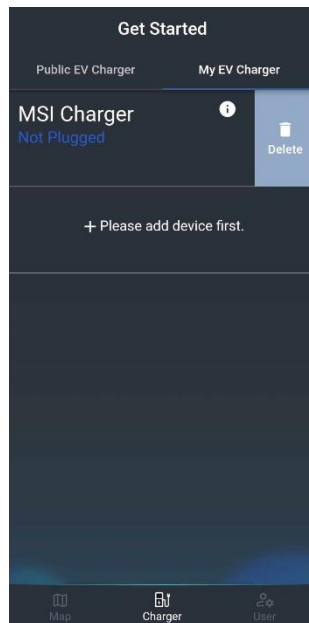
Remove a charging pile via one of the two methods below.

Method one:

Step 1. Open the EV Life mobile app, tap "Charger", and tap on "My EV Charger" up top.



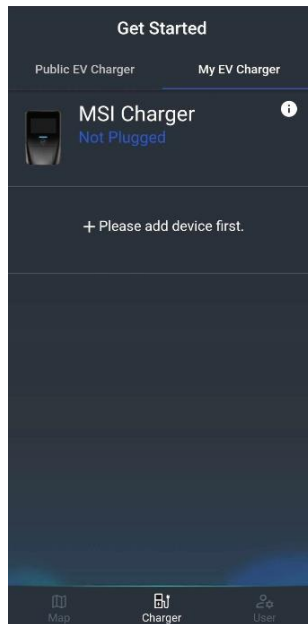
Step 2. Swipe the charger to the left, tap “Delete”, and tap “OK”.



Step 3. Confirm that the EV Life mobile app doesn’t show the charger anymore.

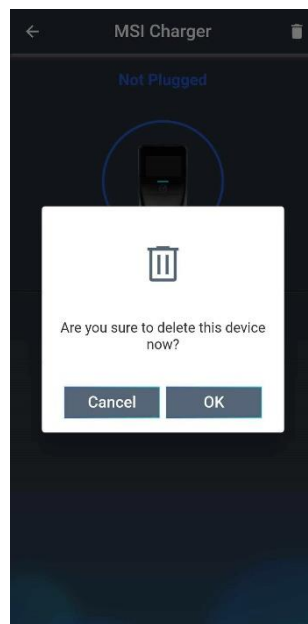
Method two:

Step 1. Open the EV Life mobile app, tap “Charger”, and tap on “My EV Charger” up top.



Step 2. Tap the charger to enter the charger’s status page.

Step 3. Tap the “Delete” icon at the top right corner and tap “OK”.



Step 4. Confirm that the EV Life mobile app doesn’t show the charger anymore.

Note: If a new user is still unable to find the charger through Bluetooth after removal using the EV Life mobile app method outlined in 3.1, remove the charger via the external hardware method outlined in 3.2.

3.2 Removal Through the External Hardware

Please contact service team for further assistance.