

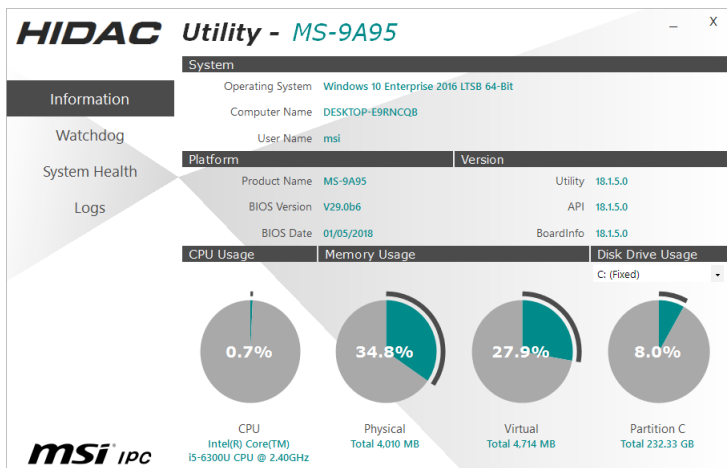
# MSI HIDAC Utility

This manual introduces the MSI HIDAC utility for overall system monitor and control.

# Activating the Utility

Select [MSI HIDAC Utility] on Desktop to activate the utility.

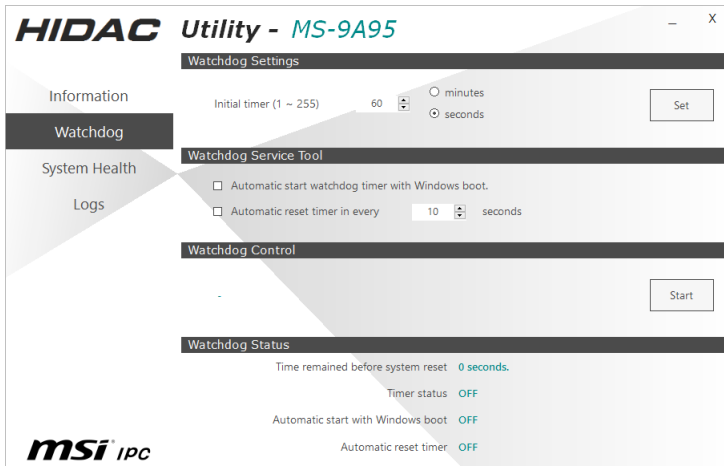
## Information



### Features:

- Real-time display of System, Platform, CPU Usage, Memory Usage and Disk Drive Usage information

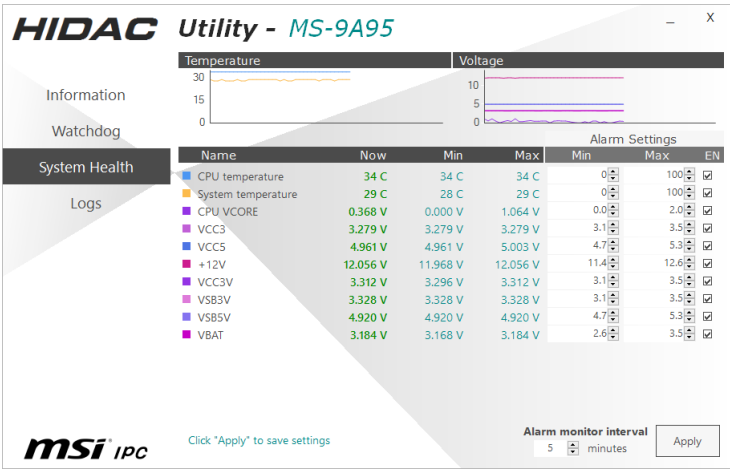
# Watchdog



## Features:

- Initial Timer configurable through **Watchdog Settings**
- **Watchdog Service Tools** available for automatically activating Watchdog Timer at system boot and automatically resetting timer after a preset time interval
- **Watchdog Control** through **Start** button
- Real-time display of **Watchdog Status**

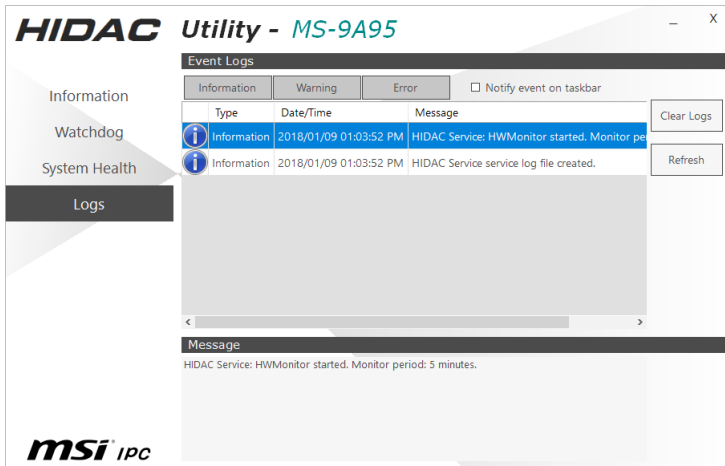
# System Health



**Features:**

- Real-time display of Hardware Monitor status including CPU/system temperatures and voltages

# Logs



## Features:

- Real-time display of Hardware Monitor alarm logs
- Alarm logs filterable by buttons (Information, Warning or Error)
- Alarm logs clearable through **Clear Logs**