



Enjoy 10 Plus

Firmware Driver Installation

Enjoy 10 Plus Firmware Driver Installation

This installation is for Windows 7 only. If you are running Windows XP and don't know how to install the driver, please contact your dealer for technical service.

Step 1: Plug in AC adapter to the tablet.



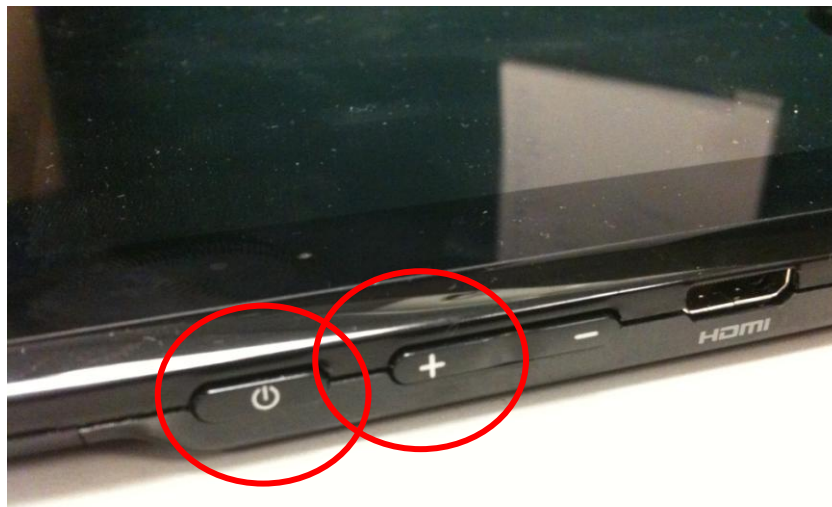
Step 2: Press Power button and power off the tablet.

Step 3: Use the USB cable to connect the tablet to your PC.

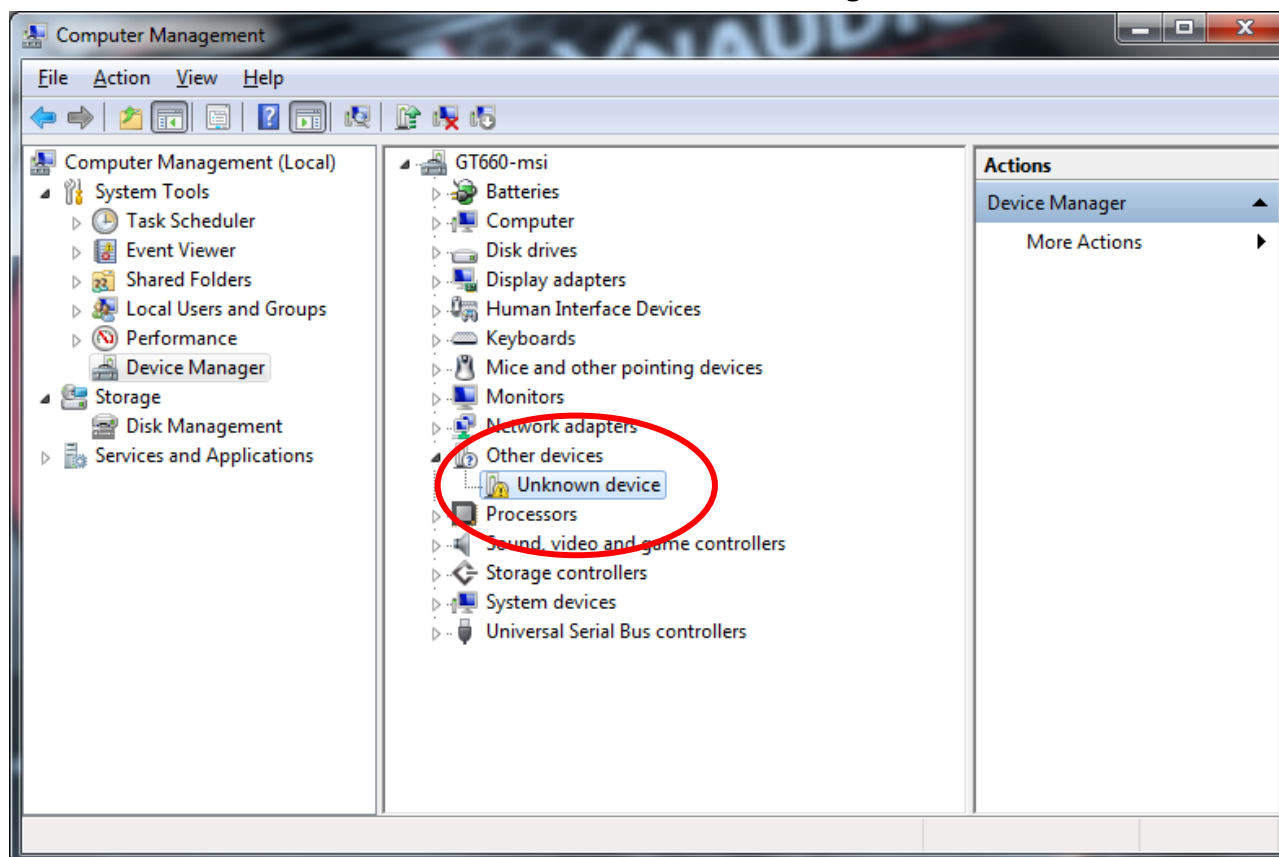


Step 4: Extract the compressed file of firmware driver to a folder in your PC.

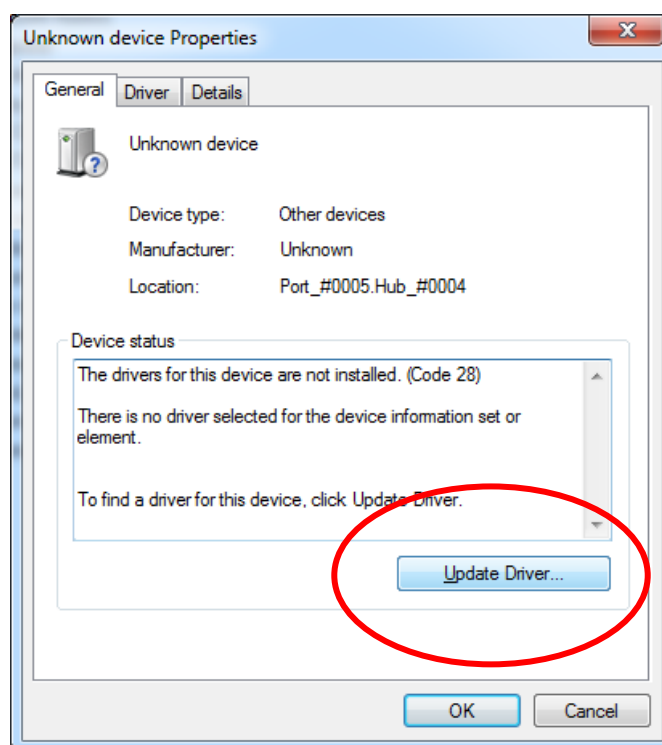
Step 5: Press and hold the Power & Volume-Up buttons simultaneously for **at least 3 seconds** and then release. (If release too soon, the tablet won't awaken.)



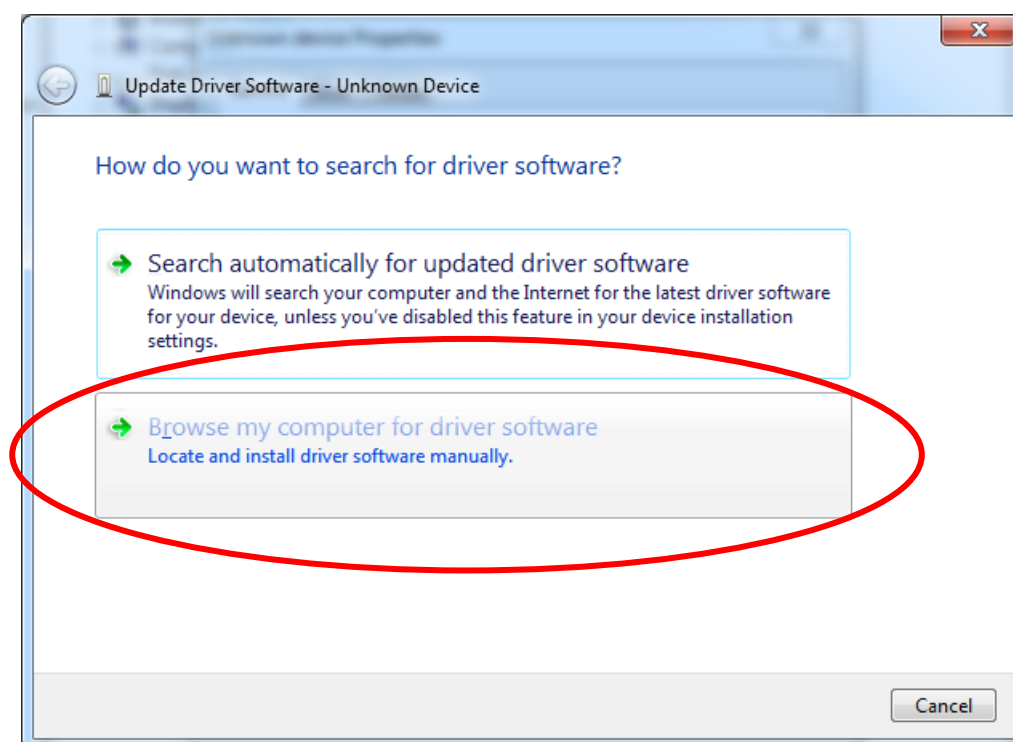
Step 6: You will hear the sound indicating there's a device plugged-in to system, and see an *Unknown device* showed in *Device Manager*.



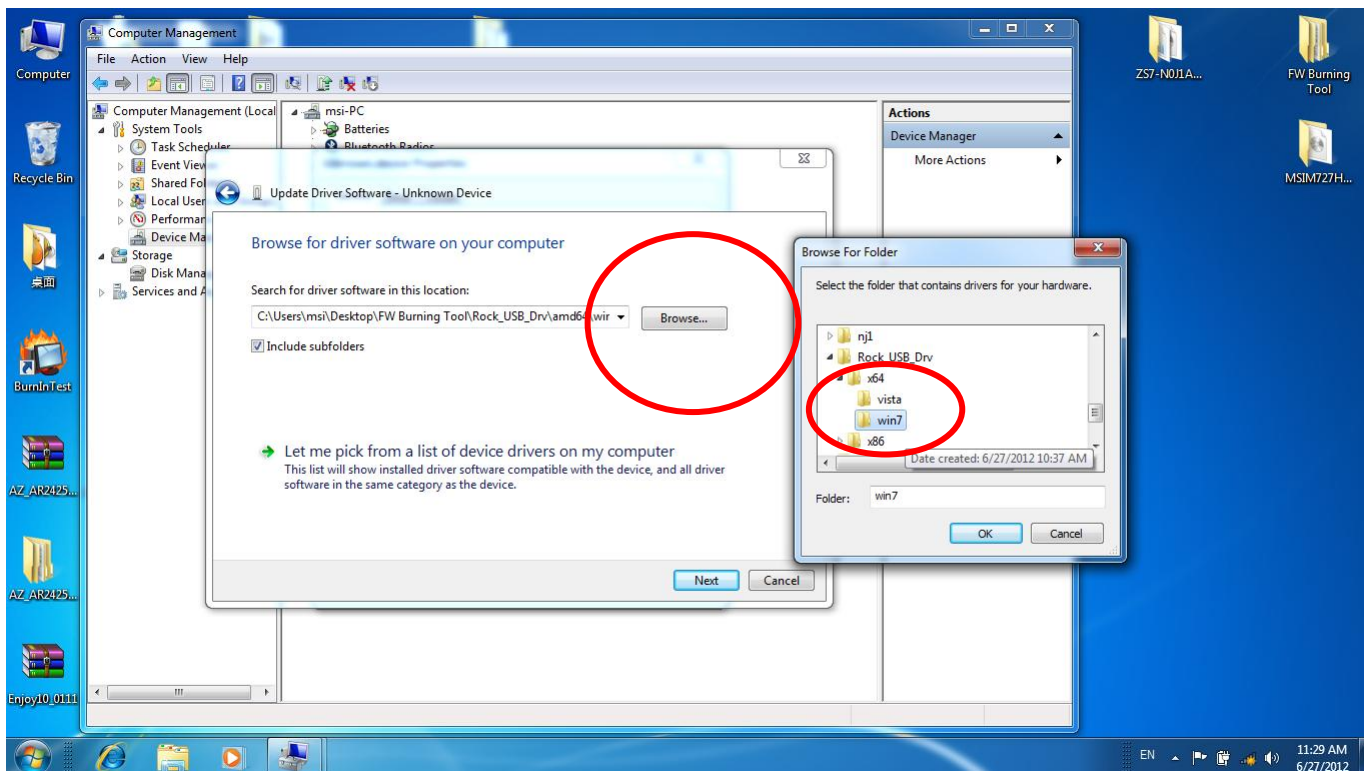
Step 7: Double-click the unknown device to open the *Unknown device Properties* window and select *Update Driver* button.



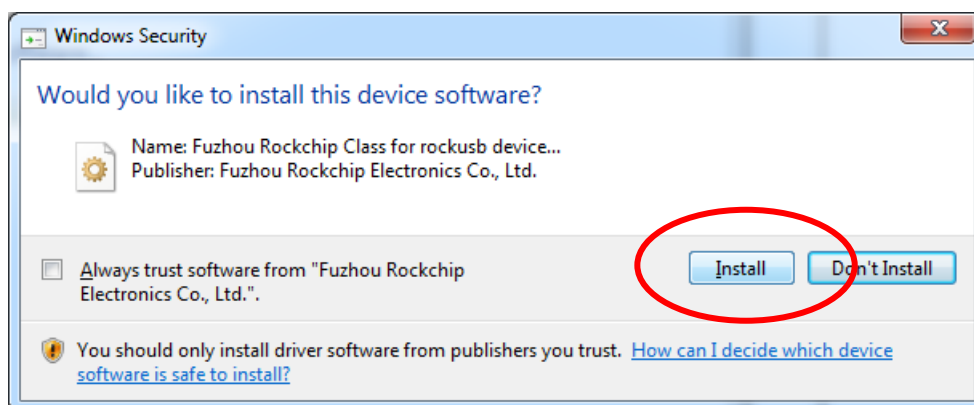
Step 8: Select "*Browse my computer for driver software*".



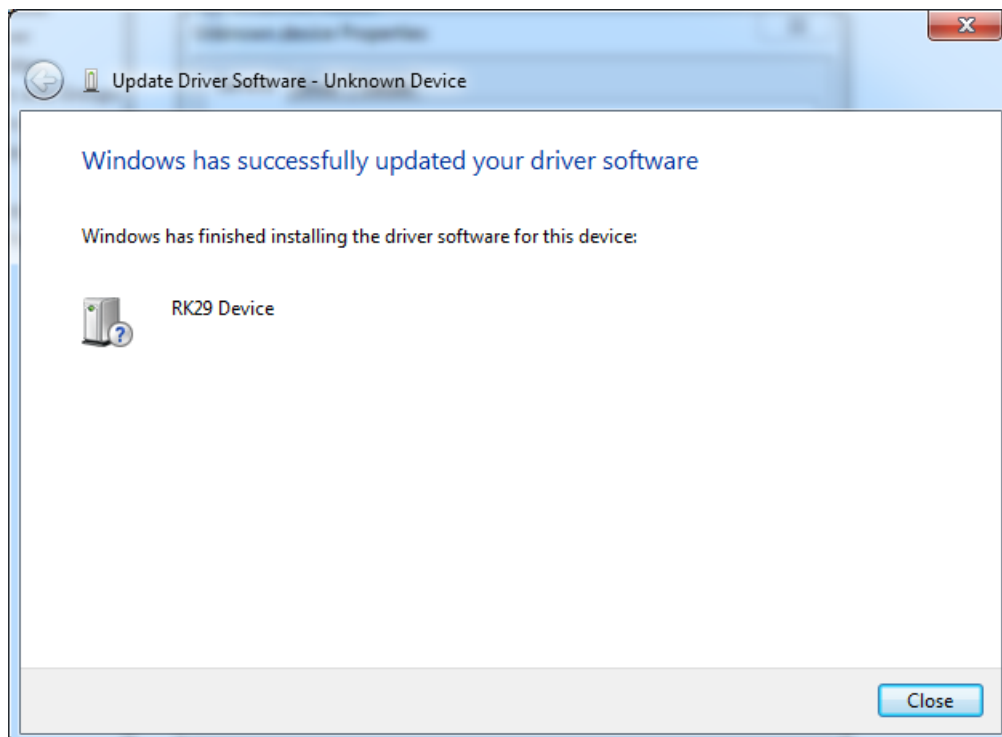
Step 9: Select *Browse* button and then select the folder where you extracted in Step 4. Select the "x86" folder if you're using a 32-bits OS or select the "x64" folder if you're using a 64-bits OS. Press "OK" and Select "Next".



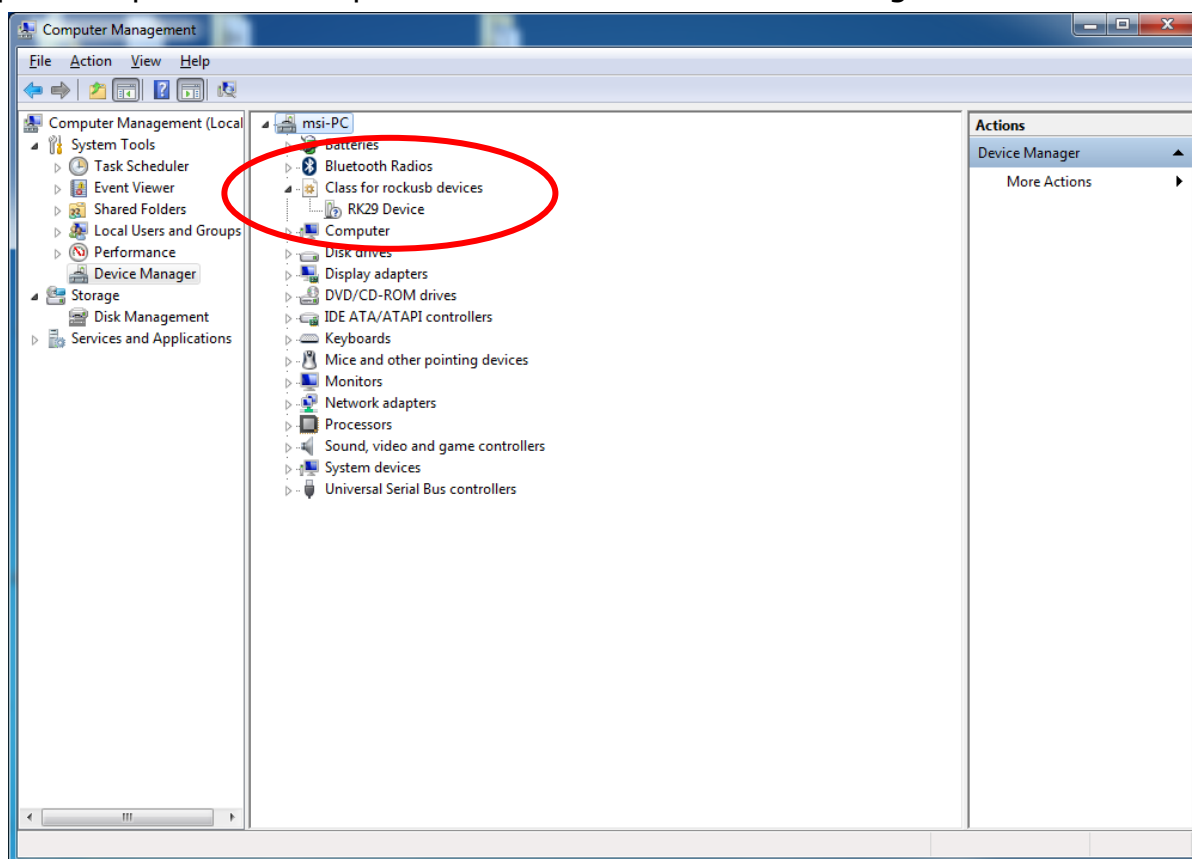
Step 10: There will be a "Window Security" pop-up window, please select "Install" and wait for the installation is finished.



Step 11: Installation complete. Close the window.



Step 12: When finished, there will be a *RK29 Device* found in *Device Manager*. If there's no RK29 Device found, the tablet may sleep due to a long idling. You can repeat Step 5 to wake up the tablet and it will be found again.



END