

Intel® Serial IO Driver

User Guide and Release Note

July 2017

Revision 1.1

Intel Confidential



INFORMATION IN THIS DOCUMENT IS PROVIDED IN CONNECTION WITH INTEL PRODUCTS. NO LICENSE, EXPRESS OR IMPLIED, BY ESTOPPEL OR OTHERWISE, TO ANY INTELLECTUAL PROPERTY RIGHTS IS GRANTED BY THIS DOCUMENT. EXCEPT AS PROVIDED IN INTEL'S TERMS AND CONDITIONS OF SALE FOR SUCH PRODUCTS, INTEL ASSUMES NO LIABILITY WHATSOEVER AND INTEL DISCLAIMS ANY EXPRESS OR IMPLIED WARRANTY, RELATING TO SALE AND/OR USE OF INTEL PRODUCTS INCLUDING LIABILITY OR WARRANTIES RELATING TO FITNESS FOR A PARTICULAR PURPOSE, MERCHANTABILITY, OR INFRINGEMENT OF ANY PATENT, COPYRIGHT OR OTHER INTELLECTUAL PROPERTY RIGHT.

A "Mission Critical Application" is any application in which failure of the Intel Product could result, directly or indirectly, in personal injury or death. SHOULD YOU PURCHASE OR USE INTEL'S PRODUCTS FOR ANY SUCH MISSION CRITICAL APPLICATION, YOU SHALL INDEMNIFY AND HOLD INTEL AND ITS SUBSIDIARIES, SUBCONTRACTORS AND AFFILIATES, AND THE DIRECTORS, OFFICERS, AND EMPLOYEES OF EACH, HARMLESS AGAINST ALL CLAIMS COSTS, DAMAGES, AND EXPENSES AND REASONABLE ATTORNEYS' FEES ARISING OUT OF, DIRECTLY OR INDIRECTLY, ANY CLAIM OF PRODUCT LIABILITY, PERSONAL INJURY, OR DEATH ARISING IN ANY WAY OUT OF SUCH MISSION CRITICAL APPLICATION, WHETHER OR NOT INTEL OR ITS SUBCONTRACTOR WAS NEGLIGENT IN THE DESIGN, MANUFACTURE, OR WARNING OF THE INTEL PRODUCT OR ANY OF ITS PARTS.

Intel may make changes to specifications and product descriptions at any time, without notice. Designers must not rely on the absence or characteristics of any features or instructions marked "reserved" or "undefined". Intel reserves these for future definition and shall have no responsibility whatsoever for conflicts or incompatibilities arising from future changes to them. The information here is subject to change without notice. Do not finalize a design with this information.

The products described in this document may contain design defects or errors known as errata which may cause the product to deviate from published specifications. Current characterized errata are available on request.

Contact your local Intel sales office or your distributor to obtain the latest specifications and before placing your product order.

Copies of documents which have an order number and are referenced in this document, or other Intel literature, may be obtained by calling 1-800-548-4725, or go to: <http://www.intel.com/design/literature.htm%20>

All products, computer systems, dates, and figures specified are preliminary based on current expectations, and are subject to change without notice.

This document contains information on products in the design phase of development. Do not finalize a design with this information. Revised information will be published when the product is available. Verify with your local sales office that you have the latest datasheet before finalizing a design.

Intel processor numbers are not a measure of performance. Processor numbers differentiate features within each processor family, not across different processor families. See www.intel.com/products/processor_number for details.

Code names featured are used internally within Intel to identify products that are in development and not yet publicly announced for release. Customers, licensees and other third parties are not authorized by Intel to use code names in advertising, promotion or marketing of any product or services and any such use of Intel's internal code names is at the sole risk of the user.

Intel and the Intel logo are trademarks of Intel Corporation in the U.S. and/or other countries.

*Other names and brands may be claimed as the property of others.

Copyright © 2016, Intel Corporation. All rights reserved.



Contents

1	Introduction	6
	1.1 Purpose and Scope of Document	6
	1.2 Acronyms and Terminology	6
	1.3 Reference Documents	7
2	Release Kit Summary	8
	2.1 Release Kit Details	8
	2.2 Kit Contents	8
3	Driver Installation	9
	3.1 Driver Installation via Installer	9
	3.2 Silent Driver Installation via Installer	14
	3.3 Manual Installation via INF File	18
	3.4 Checking the Driver Version	22
	3.5 Uninstalling the Driver via Control Panel	25
	3.6 Uninstalling the Driver via Device Manager	27
4	Closed Issues	29
5	Known Issues	30

Figures

Figure 1. Welcome Screen	10
Figure 2. License Agreement	11
Figure 3. Driver installs destination folder location	12
Figure 4. Driver components	13
Figure 5. Setup Completion	14
Figure 6. Installer Help Information	15
Figure 7. Serial IO Driver - INF files	18
Figure 8. Serial IO Controller	19
Figure 9. Serial IO Controller - Browse my computer for driver software	19
Figure 10. Serial IO Controller - Let me pick from a list of devices on my computer ..	19
Figure 11. Serial IO Controller - Let me pick from a list of devices on my computer cont. 20	20
Figure 12. Serial IO Controller - Have Disk	20
Figure 13. Serial IO Controller - Browse	20
Figure 14. Serial IO Controller – INF files	21
Figure 15. Serial IO Controller – ok to continue	21
Figure 16. Serial IO Driver - files – Next to continue	22
Figure 17. Intel® Serial IO GPIO Driver Version	23
Figure 18. Intel® Serial IO I2C Driver Version	24
Figure 19. Control Panel – Uninstall a program	25
Figure 20. Control Panel – Programs List	25
Figure 21. Welcome to the Uninstallation Program	26
Figure 22. Uninstall Setup Completion	27
Figure 23. Intel® Serial IO -Uninstall	28





Revision History

Document Number	Revision Number	Description	Revision Date
N/A	1.0	PV Release	October 2016
N/A	1.1	PV Release v2	July 2017

§



1 Introduction

1.1 Purpose and Scope of Document

This document provides installation instructions and general usage of the driver as well as release information, such as release kit summary, important notes, resolved issues and known issues. This document is intended to help OEM and ODM customers setup their platform as they prepare for validation and debug.

Intel® Serial IO Drivers supports the following operating system and platform:

Operating System:

- Windows* 7 Operating System (64-bit Client version)

Hardware Requirement:

- Intel® Core™ M Processor.
- Intel® 6th generation Core Platform I/O.
- Intel® 100 Series Chipset Family.
- Intel® 200 Series Chipset Family + Skylake CPU platforms.

1.2 Acronyms and Terminology

Term	Description
ACPI	Advanced Configuration and Power Interface
AOAC	Always On Always Connected
DMA	Direct Memory Addressing
GPIO	General Purpose IO
I2C	Inter-Integrated Circuit, generically referred to as "two-wire interface"
LPSS	Low Power Sub System (old name for Intel® Serial IO, no longer used)
LTR	Latency Tolerance Reporting
MMIO	Memory Mapped I/O
PIO	Programmed I/O



Term	Description
SPI	Serial Peripheral Interfaces Bus. A synchronous serial data link standard that operates in full duplex mode.
UART	Universal asynchronous receiver/transmitter

1.3 Reference Documents

Document	Location
Skylake Platform Controller Hub (SKL PCH-LP) External Design Specification (ED) – Volumes 1 and 2 of 2	CDI/IBL: 545659 (Volumes 1 of 2) 545845 (Volumes 2 of 2)
Kaby Lake Platform Controller Hub (SKL PCH-H) External Design Specification (ED) – Volumes 1 and 2 of 2	CDI/IBL: 564464 (Volumes 1 of 2) 566449 (Volumes 2 of 2)
Skylake Runtime D3 (RTD3) Hardware and Software Recommendations – Design Guide – Rev. 0.7	CDI/IBL: 543048
Kaby Lake Platform Design Guide (PDG)	CDI/IBL: S – 564041 H – 564042 U/Y - 561280
Skylake and Kaby Lake Platform Controller Hub (PCH), H and LP BIOS Specification	CDI/IBL: 550049

§



2 Release Kit Summary

2.1 Release Kit Details

Kit Name: Intel(R) Serial IO Driver

Version:

- Serial IO Driver – 30.61.1633.03
 - ialpss2_gpio2_skl
 - ialpss2_i2c_skl

2.2 Kit Contents

The contents of this release kit include:

- Intel® Serial IO Unpacked Driver folder – Win7\x64
 - Driver INF files
 - Driver CAT files
 - Driver SYS files
- SetupSerialIO.exe
- Intel Software License Agreement
- Readme file
- WiXLicenseNote

Note: Drivers will not be installed for controllers that are not enabled by BIOS.



3 *Driver Installation*

Note: A supported Operating System must be installed prior to the installation of the Intel® Serial IO Driver.

There are 3 different methods to install the Intel® Serial Driver for this release:

1. Driver Installation via Installer
2. Silent Driver Installation via Installer
3. Manual driver installation via INF

3.1 **Driver Installation via Installer**

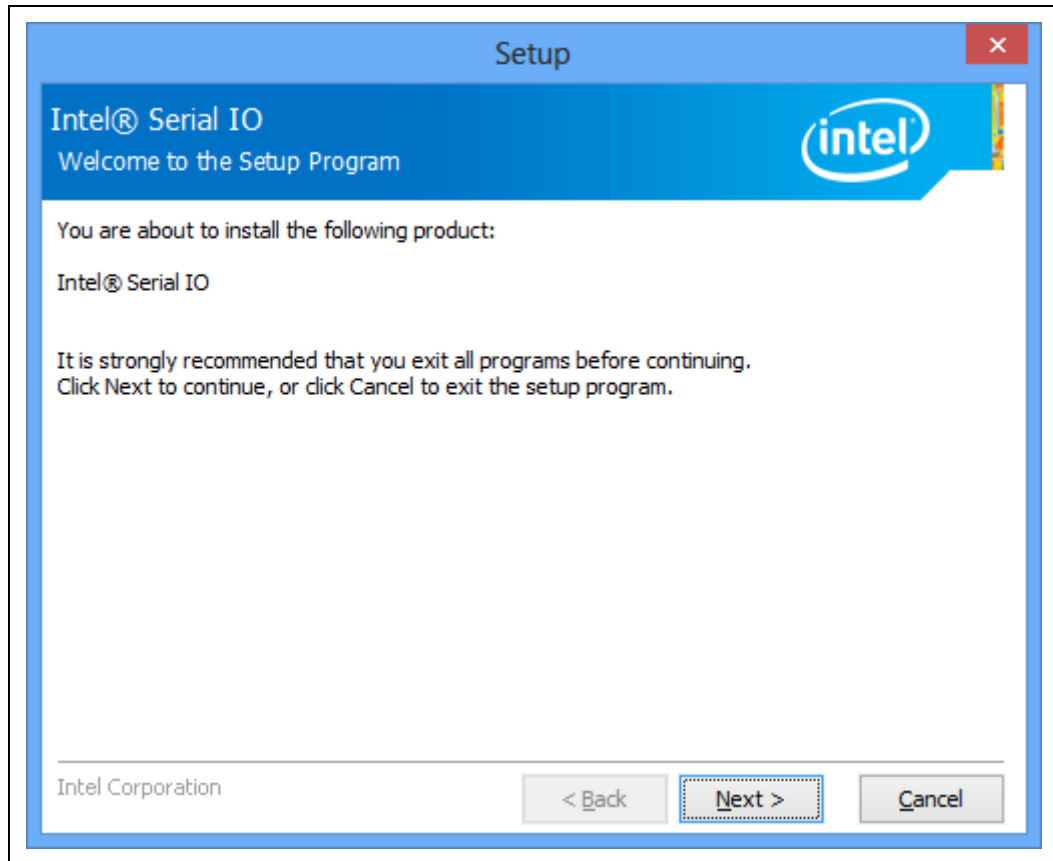
Follow the steps listed below for driver installation via installer:

1. Copy and unzip the Intel® Serial IO Driver onto the Platform under test.
2. Locate the "SetupSerialIO.exe" file.
3. Right click on the executable and select 'Run as administrator' option from the menu to start the installer and then click on 'Yes' button in User Account Control pop-up window.



4. You should see welcome screen with component details as shown in Figure 1. Click 'Next >' button to continue the installation.

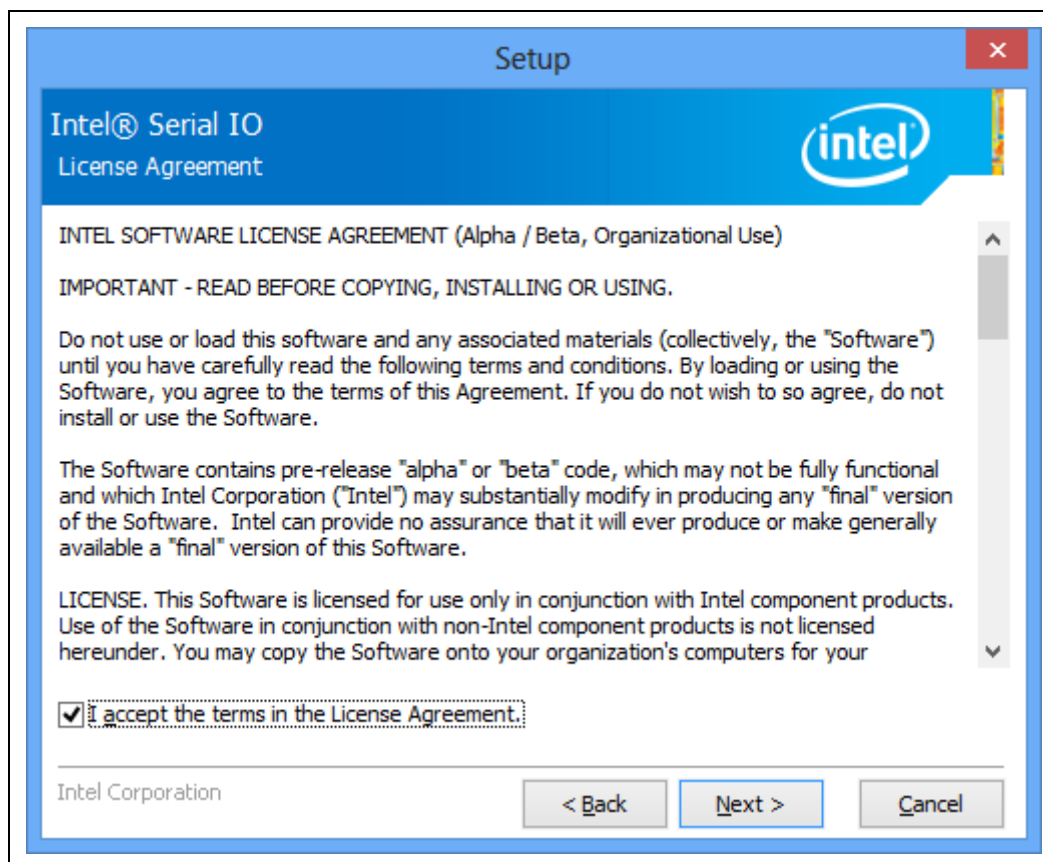
Figure 1. Welcome Screen





- Next, you should see license agreement screen as shown in Figure 2. Please review the license agreement and if you accept the license terms then check the check-box on "I accept the terms in the license Agreement" and click on the "Next >" button to continue the installation.

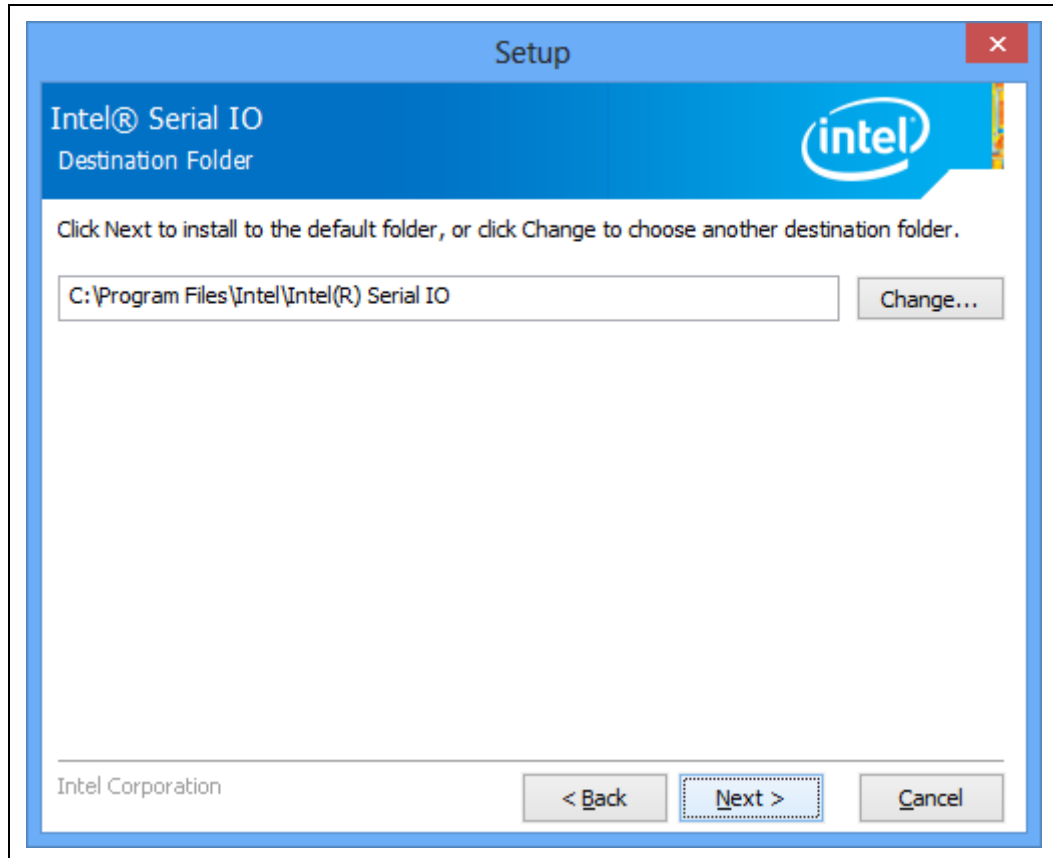
Figure 2. License Agreement





6. Next, you can select the folder location where the driver will be installed. By default, the driver will be installed in c:\program Files\Intel\Intel(R) Serial IO. Click on "Next >" button to continue installation.

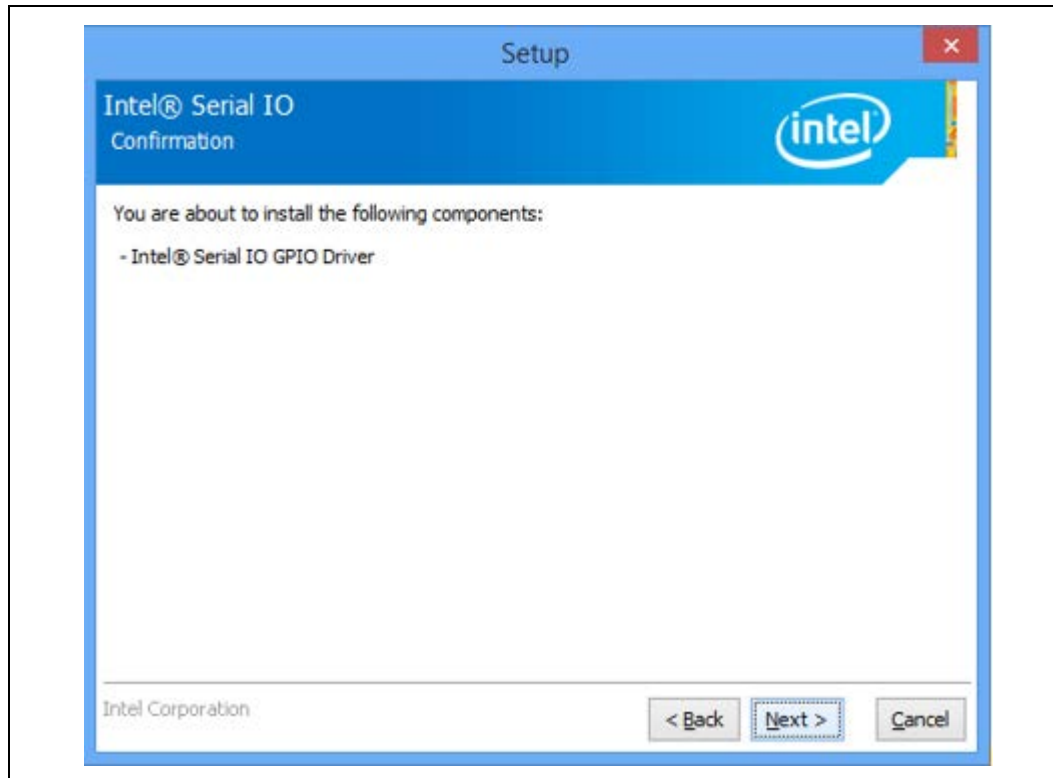
Figure 3. Driver installs destination folder location





7. Next, a list of driver components that will be installed by the installer is displayed. Click on 'Next >' button to continue.

Figure 4. Driver components

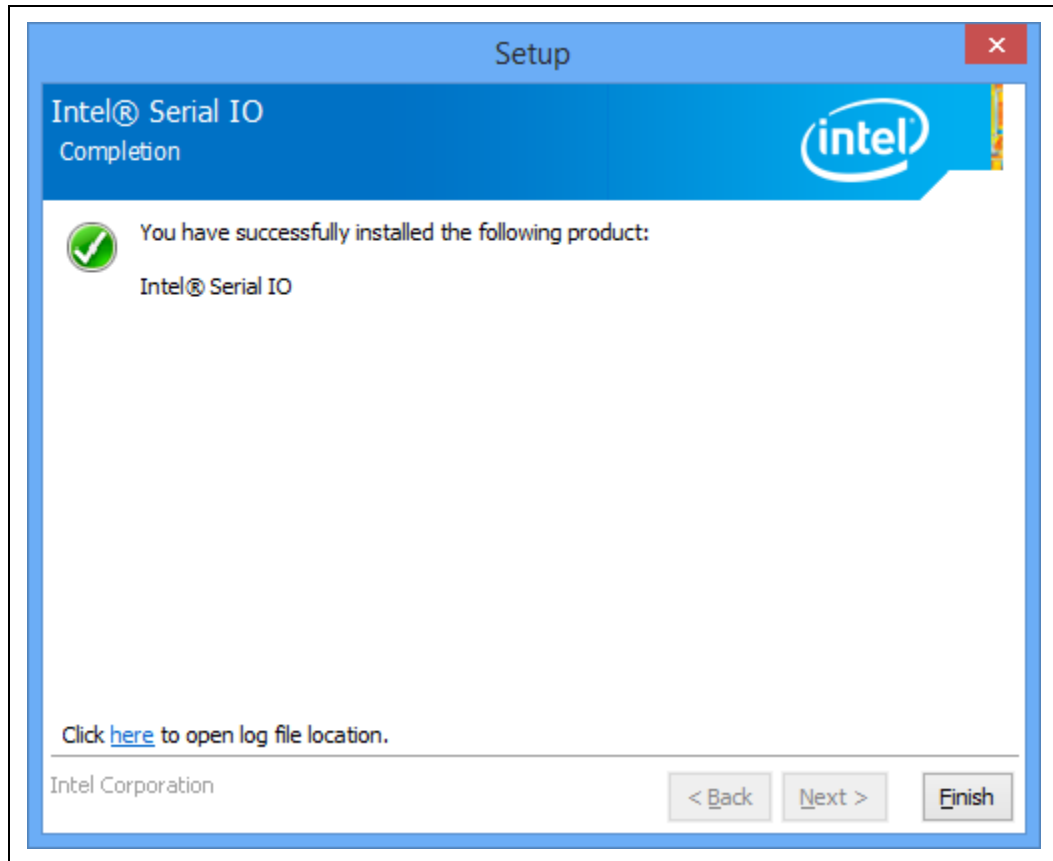


Note: Drivers will not be installed for controllers that are not enabled by BIOS.



8. After successful installation, you should see setup completion screen as shown in Figure 5. Click on 'Finish' button to complete the installation.

Figure 5. Setup Completion



3.2 Silent Driver Installation via Installer

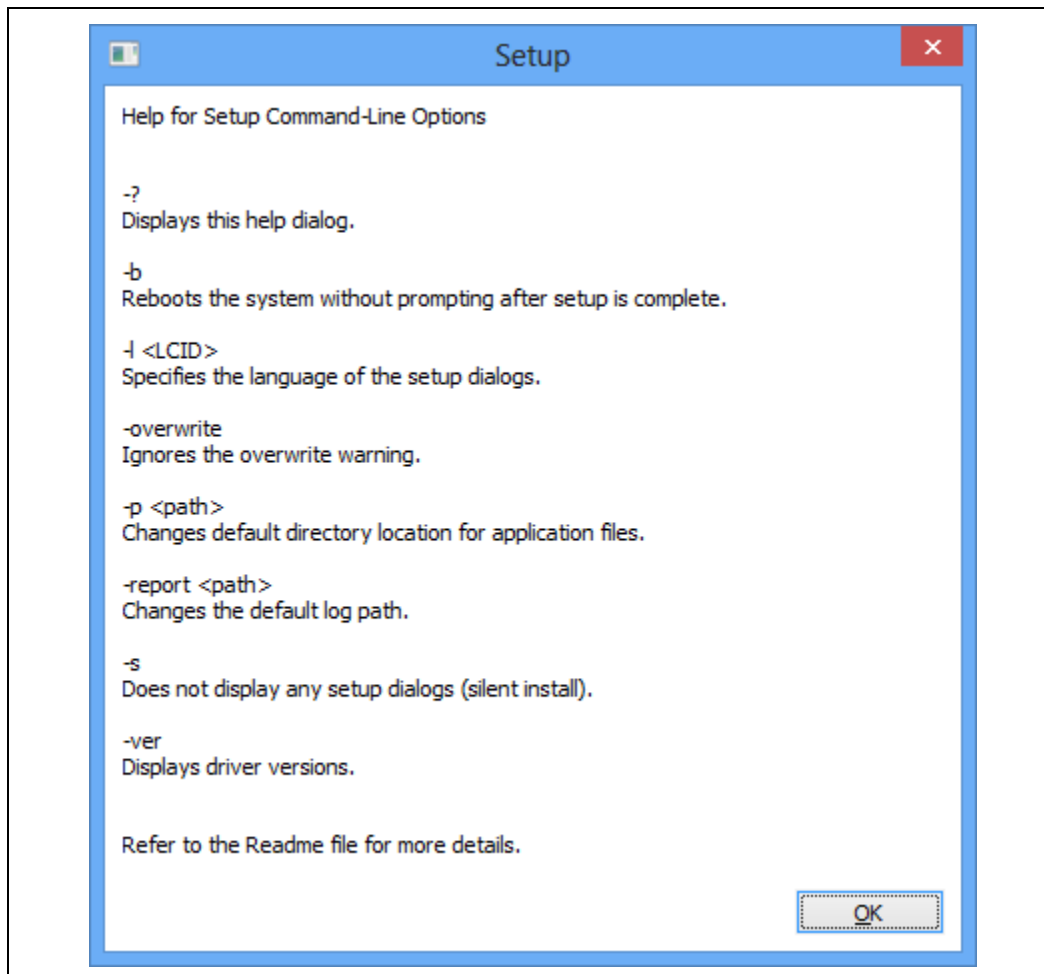
Follow the steps listed below for silent driver installation via installer:

1. Copy and unzip the Intel® Serial IO Driver onto the Platform under test.
2. Open a Command Prompt (cmd.exe) with administrator rights (ie. Run as administrator). Click on 'Yes' button in User Account Control pop-up window.
3. Change the directory to where you unzipped the driver in Step 1 and then change to the "Driver_Installer" directory.
4. To see all available options for the Installer, run command "SetupSerialIO.exe -?" You should see a window pop-up similar to Figure 6. For the "-I <LCID>" option



which specifies the language of the setup dialogs, the LCID list is shown in below table. Click OK to continue.

Figure 6. Installer Help Information



Note: The “-report <path>” option allows users to change where the installation log file is saved. Otherwise, Intel driver installation log files are stored in the general location of ‘C:\Users\“User name”\Intel\Logs’.



LCID	Language
0401	Arabic
0804	Chinese (Simplified)
0404	Chinese (Traditional)
0405	Czech
0406	Danish
0407	German
0408	Greek
0409	English (USA)
040A	Spanish
040B	Finnish
040C	French
040D	Hebrew
040E	Hungarian
0410	Italian

LCID	Language
0411	Japanese
0412	Korean
0413	Dutch
0414	Norwegian
0415	Polish
0416	Portuguese (Brazil)
0816	Portuguese (Standard)
0419	Russian
041B	Slovak
0424	Slovenian
041D	Swedish
041E	Thai
041F	Turkish

5. Run command "SetupSerialIO.exe -b -s" to start the silent installation. (Where as x represents the particular version number.) This process should take about 1 min to complete. When silent installation is complete, the system will automatically reboot.
6. After the system has booted, you can refer to section 0 to check the driver version.

Other silent installation examples are:

- > SetupSerialIO.exe -s -overwrite -report C:\Temp
- > SetupSerialIO.exe -s -l 0404



For the installation, a full listing of return values can be found in the following table. The 'Result Code' value can be found at the end of the installation log file.




Result Code	Description
0	Success
3010	Reboot required
1602	User exited
1641	Reboot initiated
1603	Install failure



3.3 Manual Installation via INF File

Follow the steps listed below for driver installation via INF file:

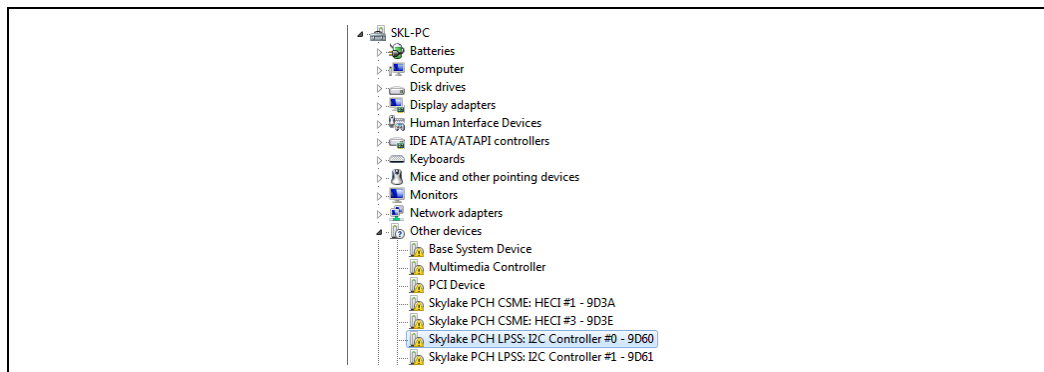
Figure 7. Serial IO Driver - INF files

 iaLPSS2_GPIO2_SKL.inf	8/8/2016 2:22 PM	Setup Information
 iaLPSS2_I2C_SKL.inf	8/8/2016 2:22 PM	Setup Information
 iaLPSS2_GPIO2.svs	9/15/2016 7:47 AM	Svstem file

1. Open the device manager –click on the “Start” button, under “run” type “Device Manager” and select the option.
2. Find the 'Intel(R) Serial IO controller' with the following DEV ID
 - a. I2C Host Controller:
 - DEV_9D60
 - DEV_9D61
 - DEV_9D62
 - DEV_9D63
 - DEV_9D64
 - DEV_9D65
 - DEV_A160
 - DEV_A161
 - DEV_A162
 - DEV_A163
 - DEV_A2E0
 - DEV_A2E1
 - DEV_A2E2
 - DEV_A2E3
 - b. GPIO Host Controller:
 1. ACPI\INT344B
 2. ACPI\INT345D
 3. ACPI\INT3451

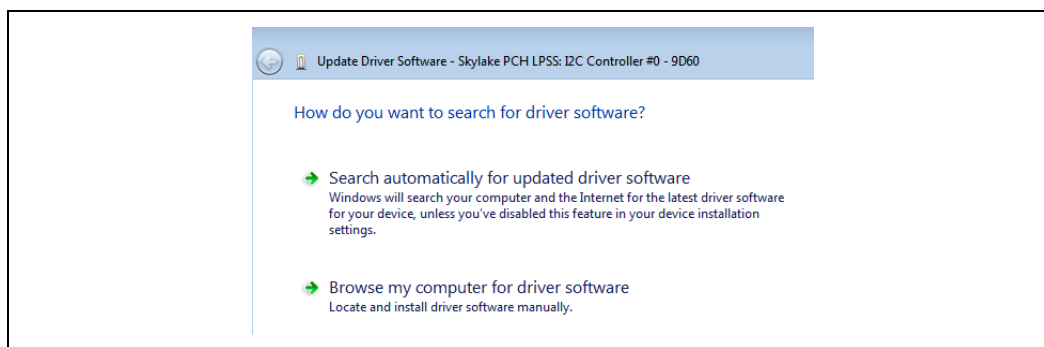


Figure 8. Serial IO Controller



3. Right click on the desired controller and select "Update driver Software" option.
4. Select "Browse my computer for driver software" option.

Figure 9. Serial IO Controller - Browse my computer for driver software



5. Select "Let me pick from a list of devices on my computer" option and click next.

Figure 10. Serial IO Controller - Let me pick from a list of devices on my computer

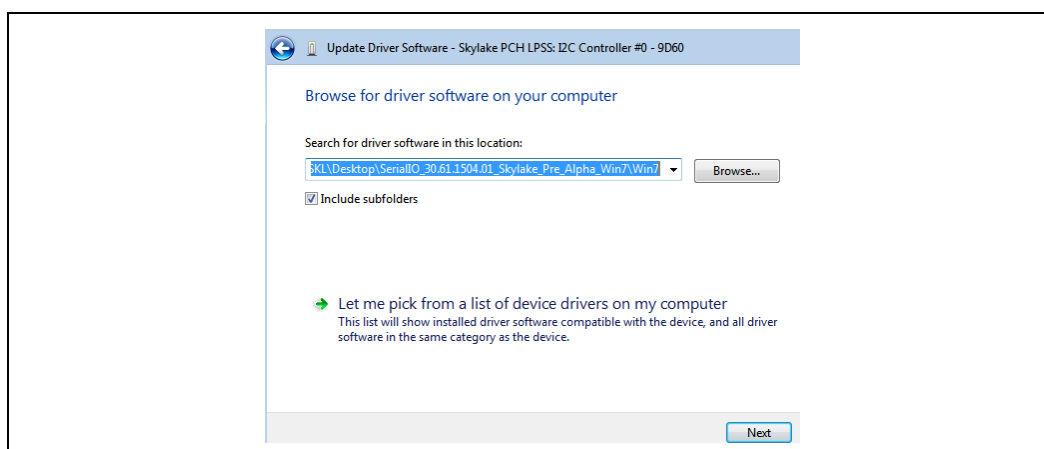
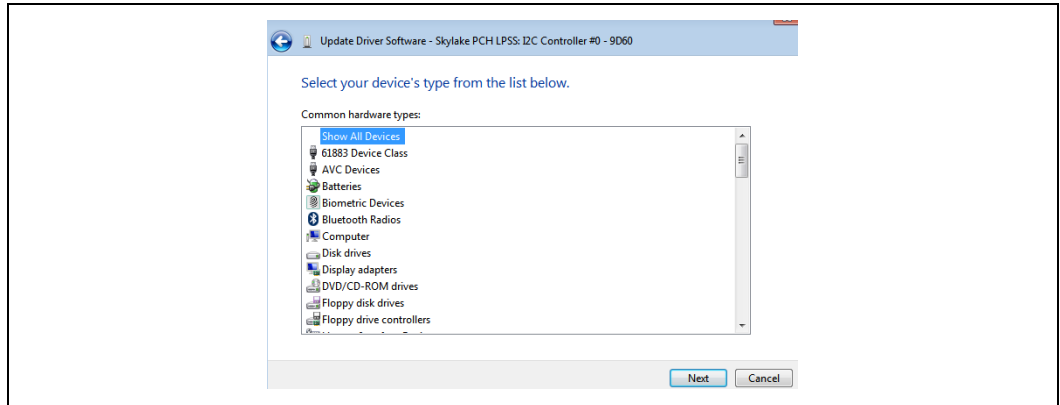
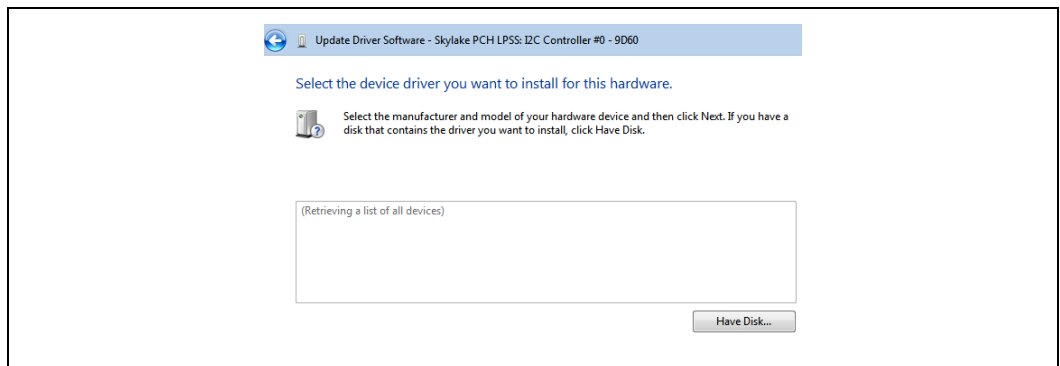


Figure 11. Serial IO Controller - Let me pick from a list of devices on my computer cont.



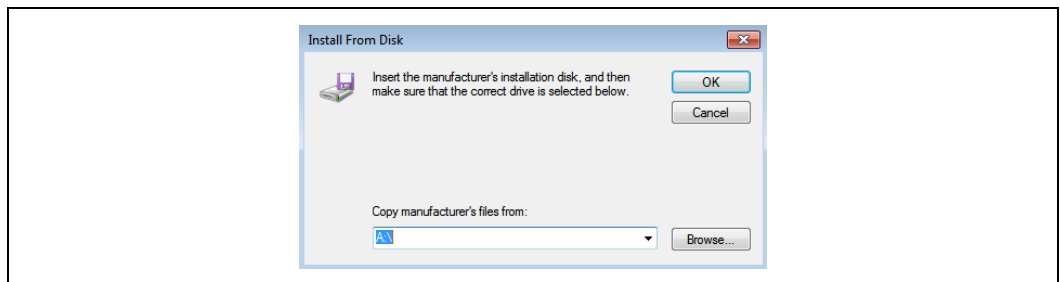
6. Click on the "Have Disk" button.

Figure 12. Serial IO Controller - Have Disk



7. Click on the "Browse" button.

Figure 13. Serial IO Controller - Browse

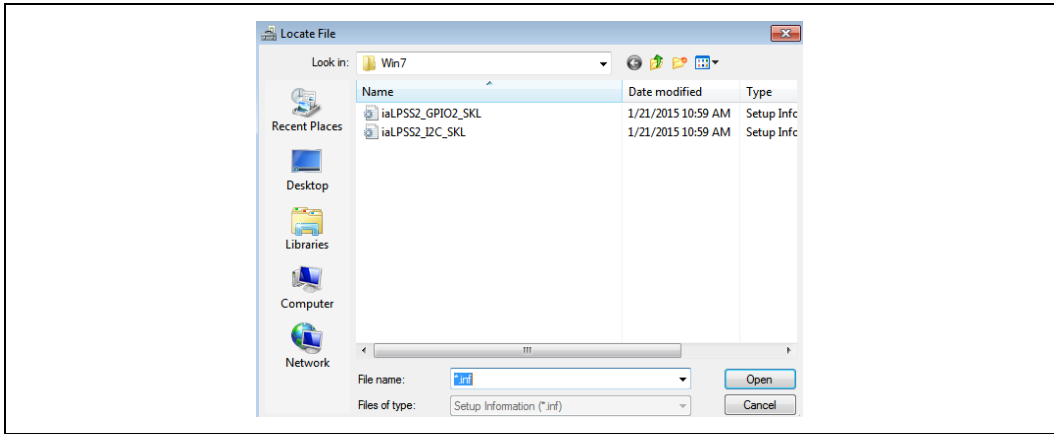


8. Navigate to the location of the folder for Intel® Serial IO Driver. Select the right driver.

- a. I2C Host Controller: *iaLPSS2_I2C_SKL.inf*
- b. GPIO Host Controller: *iaLPSS2_GPIO2_SKL.inf*

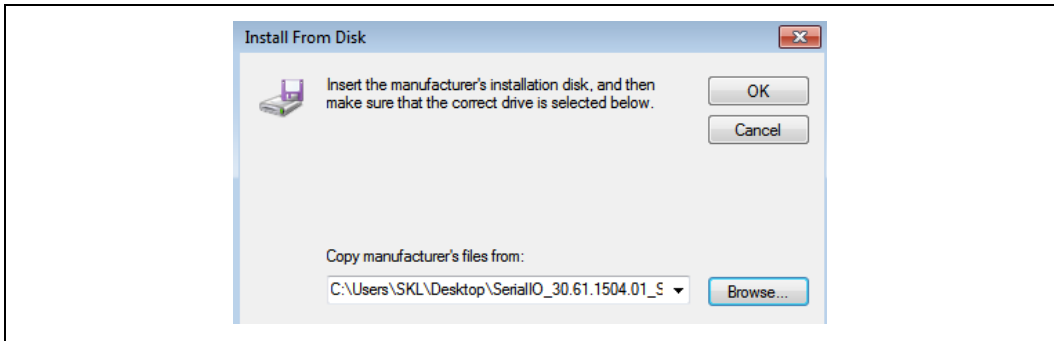


Figure 14. Serial IO Controller – INF files



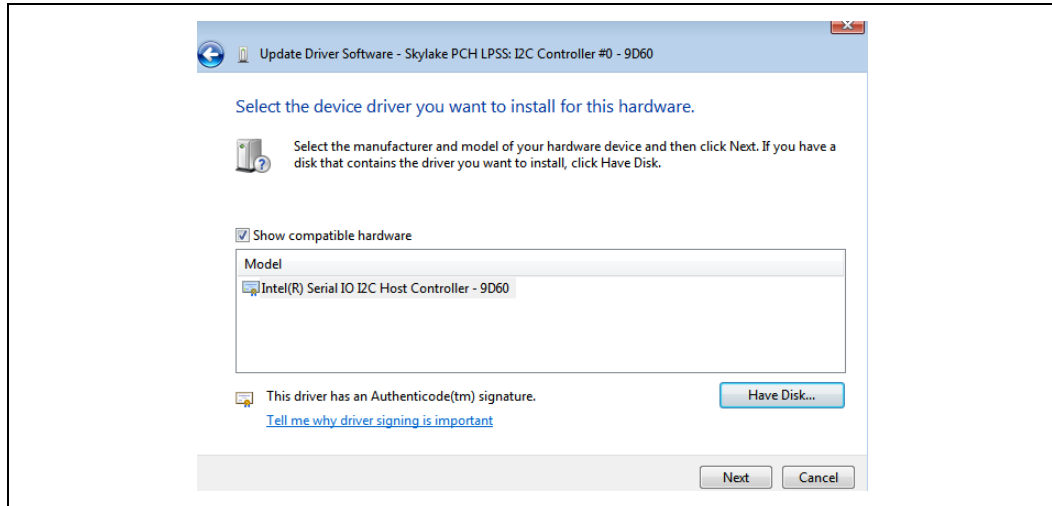
- 9. Click on the "Open" button.
- 10. Click on the "Ok" button.

Figure 15. Serial IO Controller – ok to continue



- 11. Click on the "Next" button to install the driver.

Figure 16. Serial IO Driver - files – Next to continue



3.4 Checking the Driver Version

To check the Intel® Serial IO Driver version, follow the below instructions:

1. Open Device Manager.
2. Double click on the device you want.
3. Select the "Driver" tab and the Driver Version will be listed.



Figure 17. Intel® Serial IO GPIO Driver Version

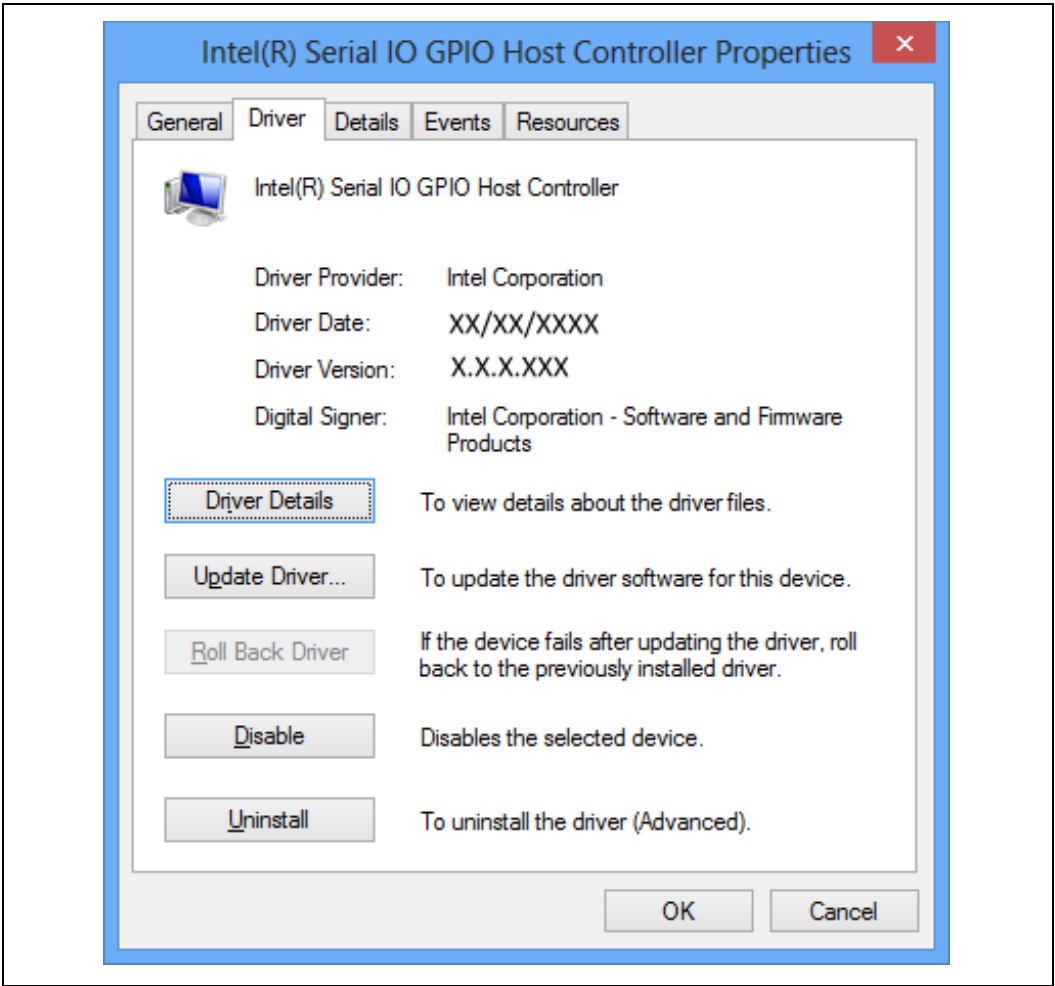
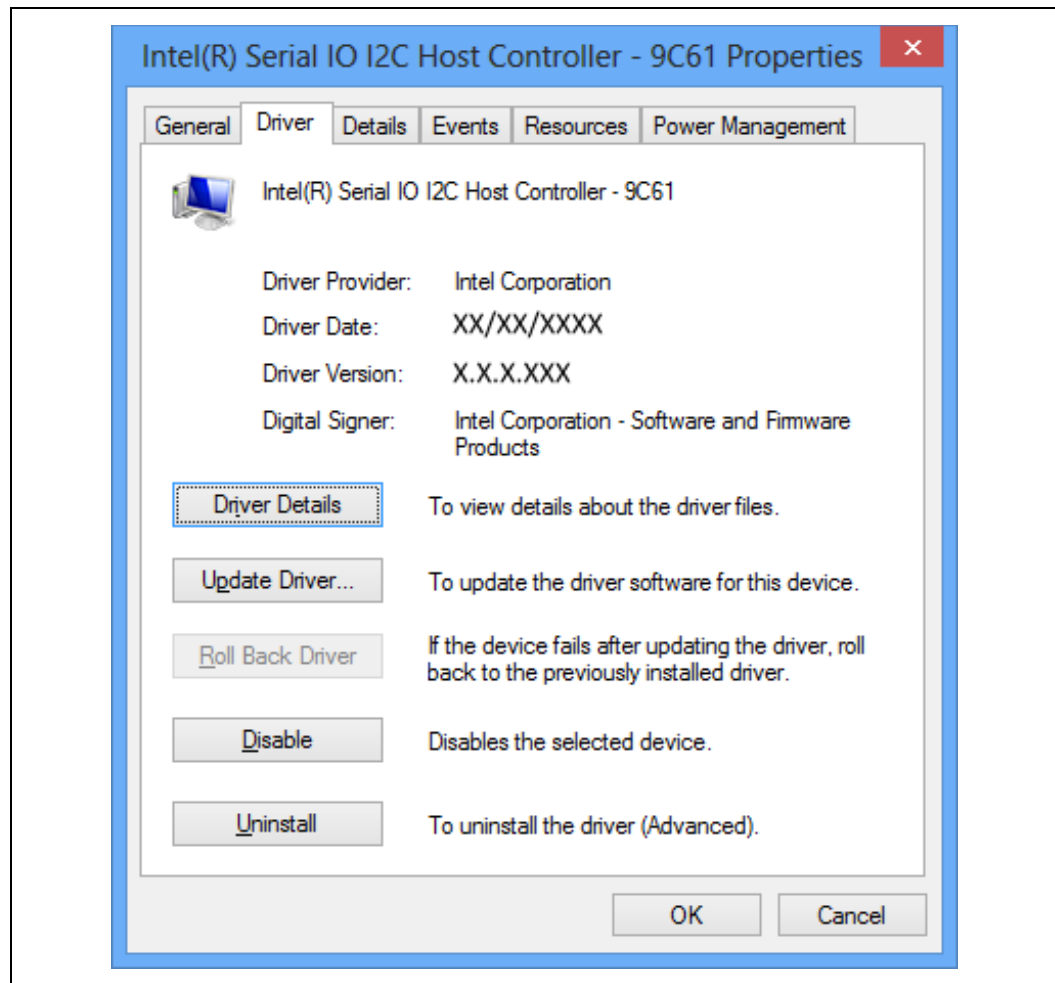




Figure 18. Intel® Serial IO I2C Driver Version



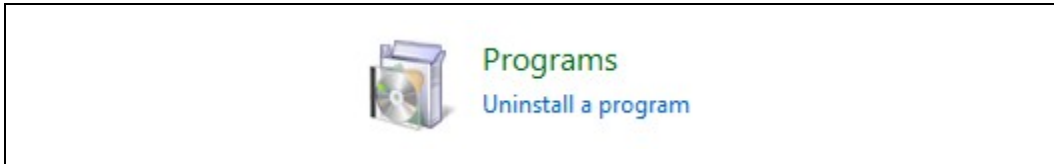


3.5 Uninstalling the Driver via Control Panel

Follow the steps listed below to uninstall the driver via the Control Panel:

- 1. Open the Control Panel window.
- 2. If the Control Panel window is shown in 'Category' view, then select "Uninstall a program" as shown in Figure 19. Otherwise if the Control Panel window is shown in 'icon' view, then select "Programs and Features".

Figure 19. Control Panel – Uninstall a program



- 3. On the next window, select the "Intel® Serial IO Driver" (see Figure 20) from the list of programs. Then click the "Uninstall" button.

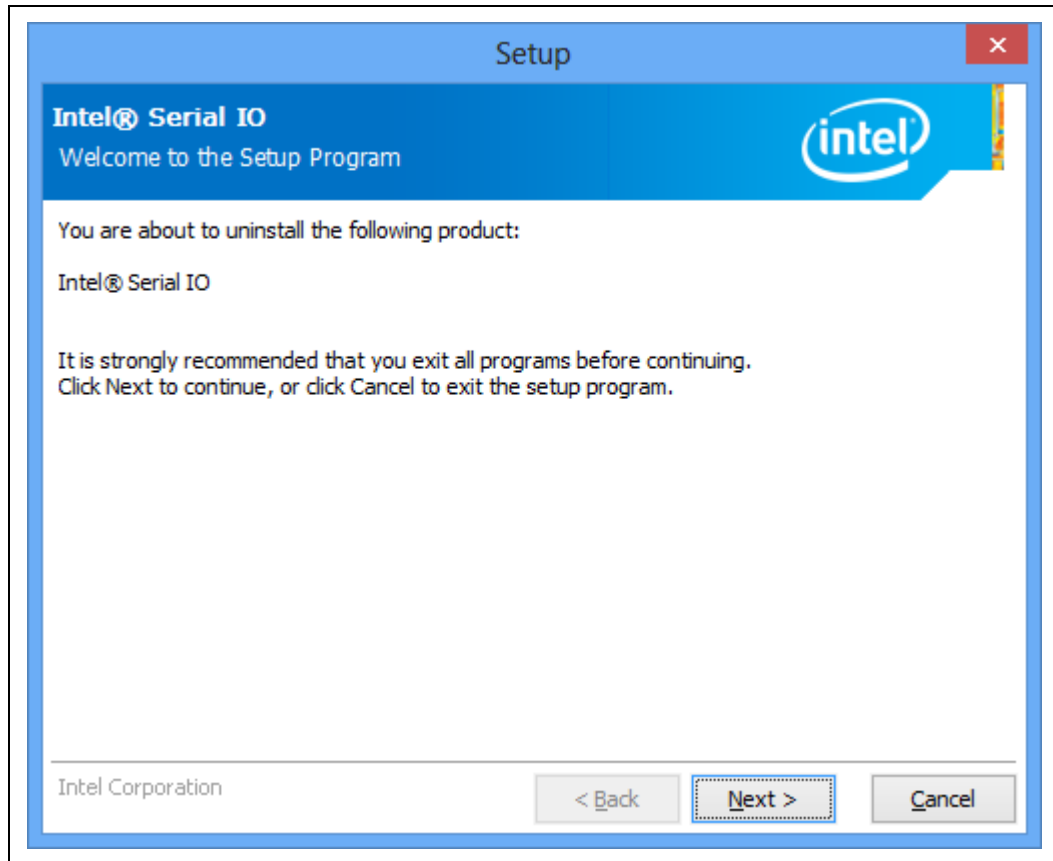
Figure 20. Control Panel – Programs List





4. You should see the Welcome to Uninstallation Program pop-up window with component details as shown in Figure 21. Click 'Next >' button to continue.

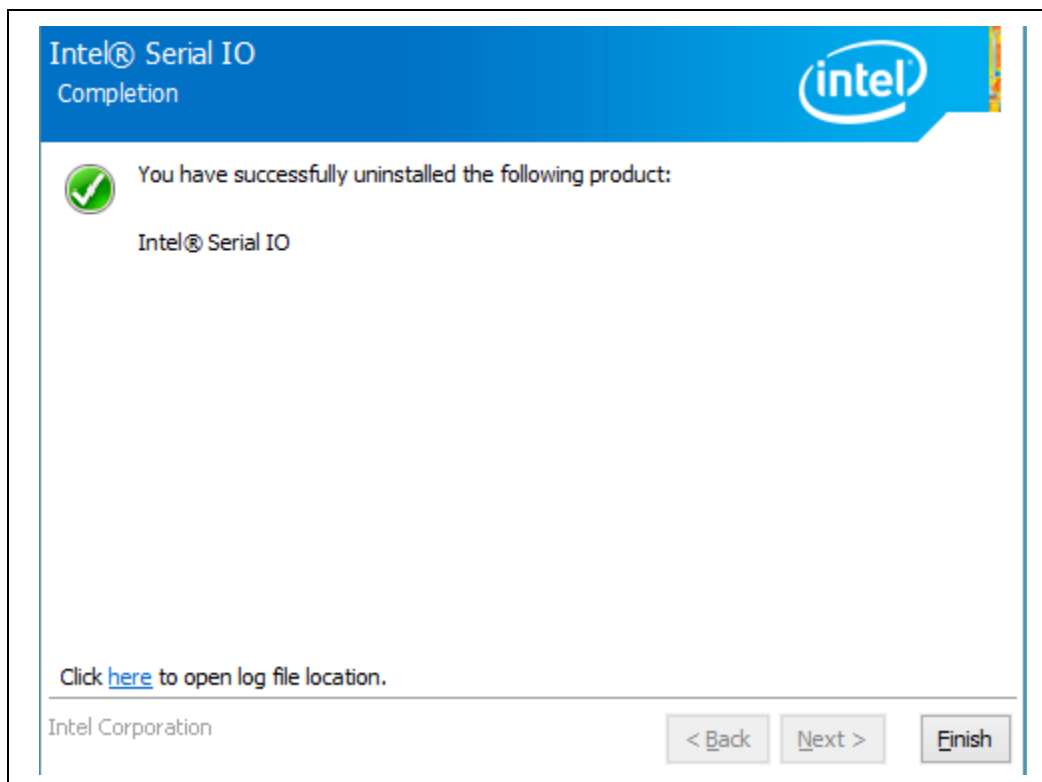
Figure 21. Welcome to the Uninstallation Program





5. Next, installer will perform various operations and show progress in Uninstallation Progress screen. When the uninstall process is completed, you should see screen as shown in Figure 22. Click on 'Finish' button to restart the system.

Figure 22. Uninstall Setup Completion



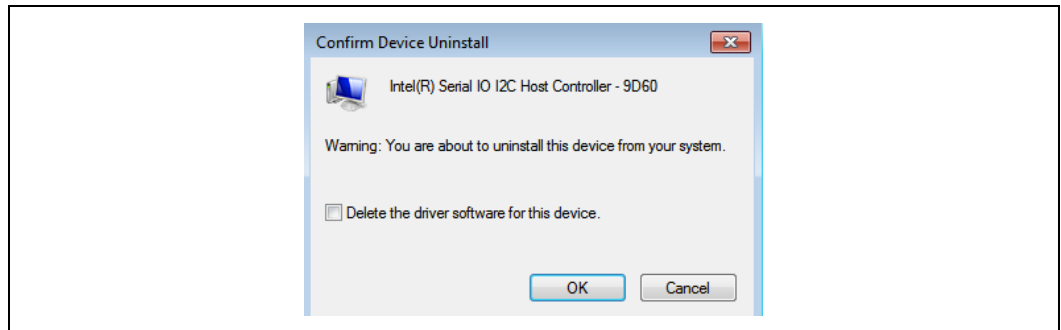
3.6 Uninstalling the Driver via Device Manager

Follow the steps listed below to uninstall the driver via device manager:

1. Open the device manager –click on the “Start” button, under “run” type “Device Manager” and select the option.
2. Find the Intel® Serial IO Controller.
3. Right click on the Intel® Serial IO controller select “uninstall” option.
4. Click “Ok” button to complete process.



Figure 23. Intel® Serial IO -Uninstall



S



4 Closed Issues

Issue #	Description	Resolution
1504510746	Installer: hardened Installer code.	Resolved in 30.61.1633.03 (Installer version 2.3.2605.0)
1504280148	GPIO: Added save/restore capability	Resolved in 30.61.1633.03
10071166	Installer: Installer will fail to install the driver if OS account user name has a space	Resolved in 30.61.1633.03
N/A	GPIO: Fix incorrect IRQ level	Resolved in 30.61.1633.03
1504237912	GPIO: BSOD may occurs when GPIO controller is enabled and disabled in the OS.	Resolved in 30.61.1633.03
1504156602	GPIO: Add spinlock to avoid race condition in the driver.	Resolved in 30.61.1633.03
1404677600	GPIO: driver initializes the GPP_IE register and pin information when resuming from S3/S4 power state.	Resolved in 30.61.1633.03

§



5 Known Issues

Issue #	Description
N/A	

§