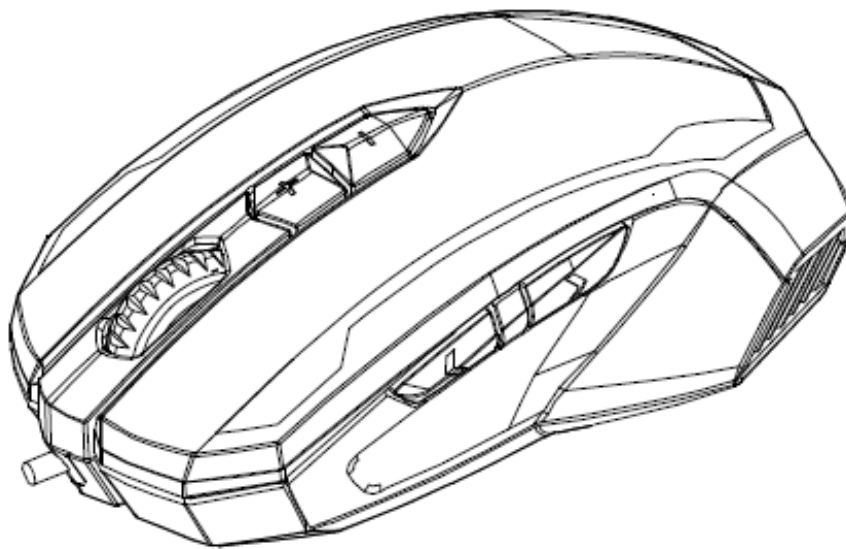


Gaming Mouse

OWNER'S GUIDE

Ver.:1.00



CAUTION: To use this product properly, please read the user's guide before installing.

Federal Communication Commission Interference Statement

This equipment has been tested and found to comply with the limits for a Class B digital device, pursuant to Part 15 of the FCC Rules. These limits are designed to provide reasonable protection against harmful interference in a residential installation. This equipment generates, uses and can radiate radio frequency energy and, if not installed and used in accordance with the instructions, may cause harmful interference to radio communications.

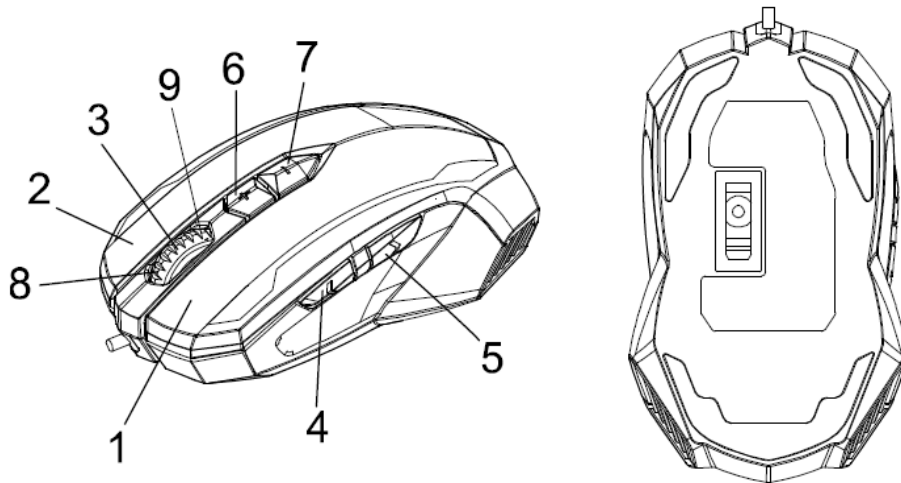
However, there is no guarantee that interference will not occur in a particular installation. If this equipment does cause harmful interference to radio or television reception, which can be determined by turning the equipment off and on, the user is encouraged to try to correct the interference by one of the following measures:

- Reorient or relocate the receiving antenna.
- Increase the separation between the equipment and receiver.
- Connect the equipment into an outlet on a circuit different from that to which the receiver is connected.
- Consult the dealer or an experienced radio/TV technician for help.

FCC Caution: Any changes or modifications not expressly approved by the party responsible for compliance could void the user's authority to operate this equipment.

This device complies with Part 15 of the FCC Rules. Operation is subject to the following two conditions: (1) This device may not cause harmful interference, and (2) this device must accept any interference received, including interference that may cause undesired operation.

Mouse Buttons



1. Left button (Click)

2. Right button (Menu)

3. Scrolling Wheel

4. Forward

5. Backward .

6. CPI up

7. CPI down

8. Scroll up

9. Scroll down

Backward

Press this button to view the pervious page of the Internet browser.

Forward

Press this button to view the next page of the Internet browser.

For USB port installation

1. Plug the USB connector to the USB port of your computer
2. The computer will detect and install the mouse automatically
3. When the installation completes, the mouse is ready to use



System Requirements

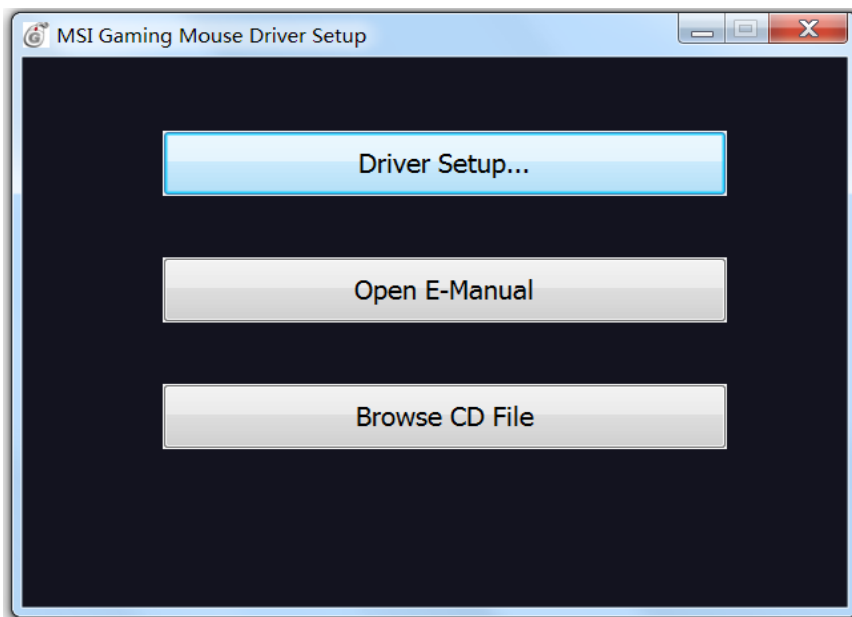
- Windows® XP/Vista/7/8/8.1
- Free USB port
- CD-ROM driver
- 25MB free hard disk space

INSTALLATION

Step 1: Plug the mouse into any free USB port on your computer.

Step 2: Windows® will automatically detect the AY3

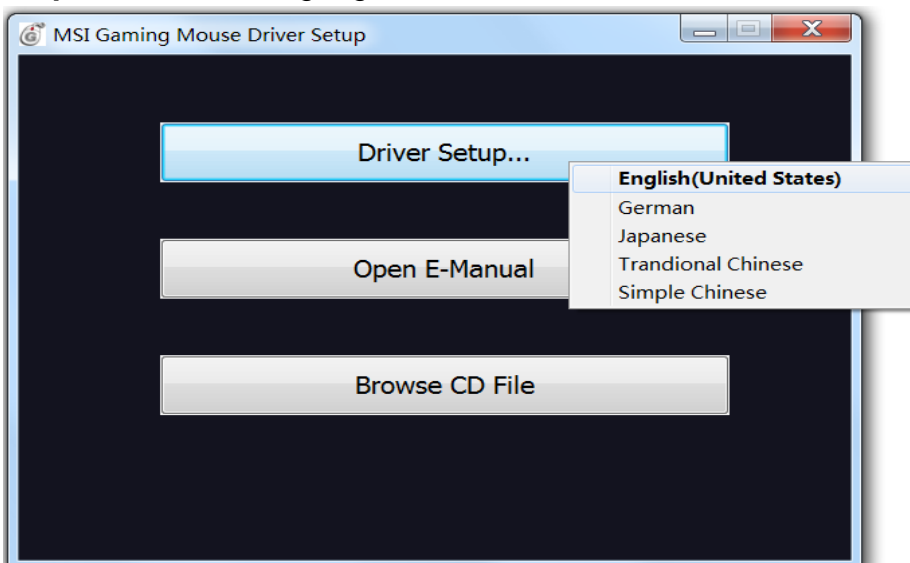
Step 3: Start the installation process by clicking on the file “Driver Setup...”



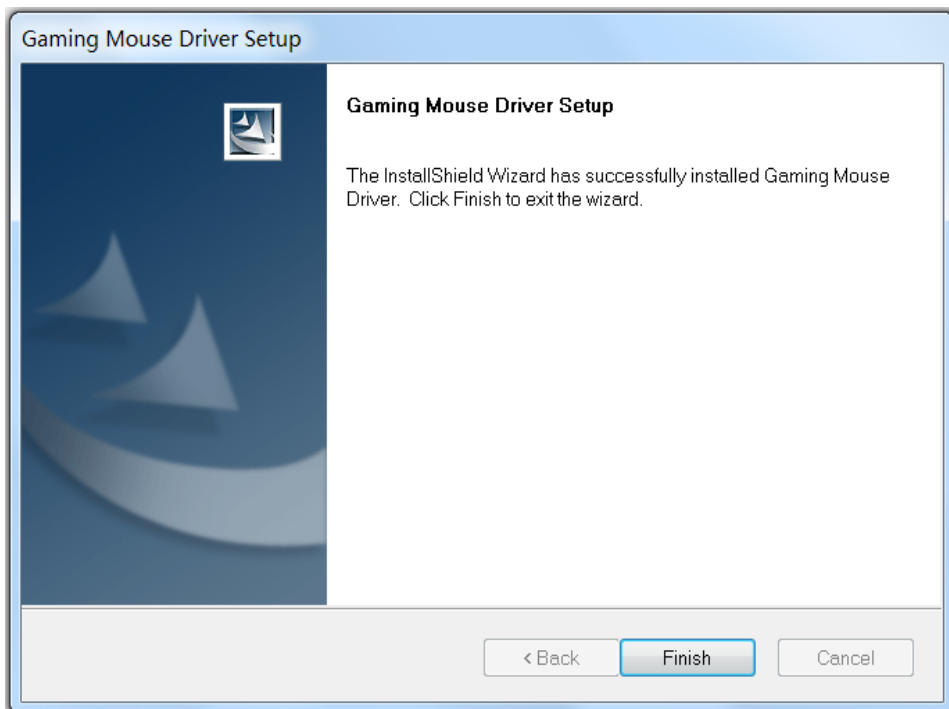
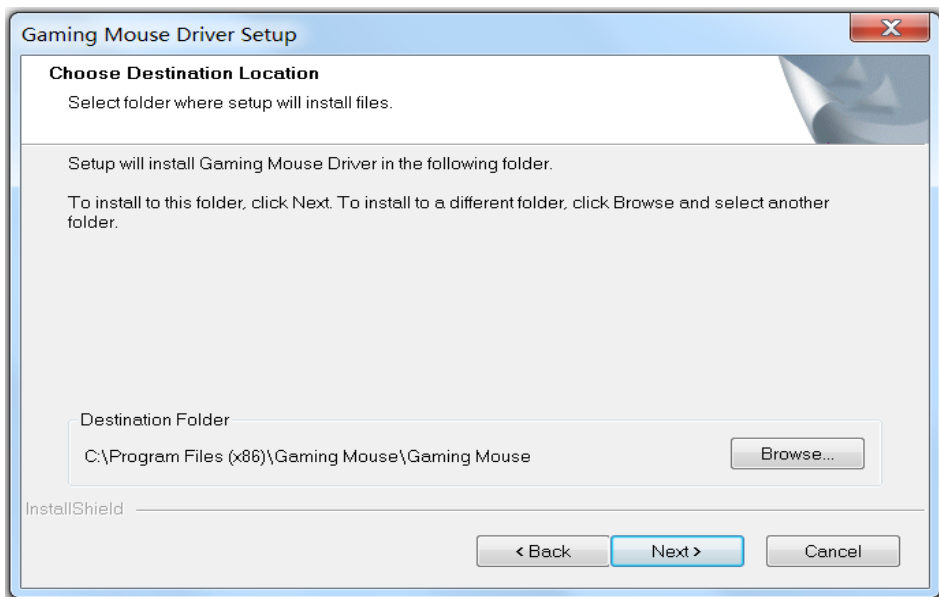
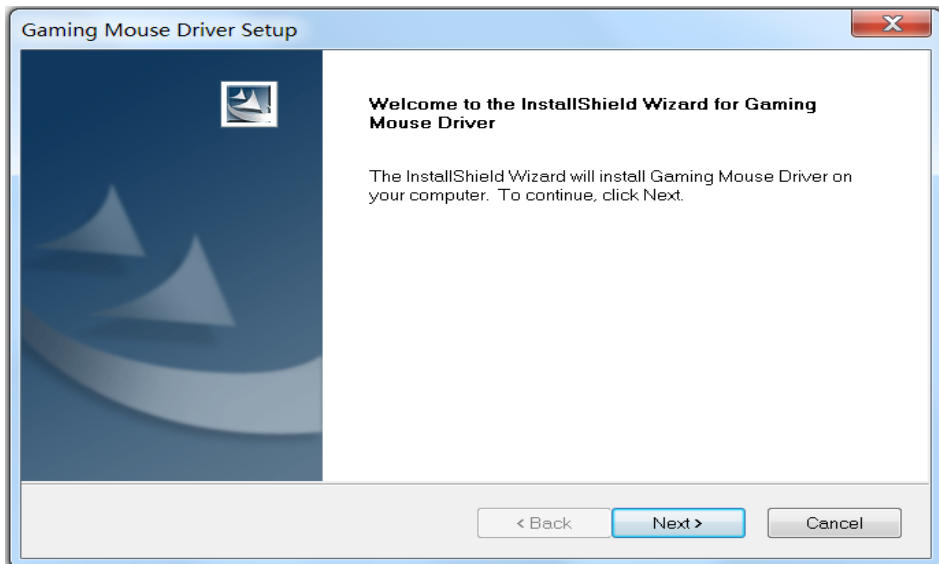
Step 4: Windows® will prompt you if installation should continue despite not passing Windows logo testing; install the driver despite this.

Note: The driver will automatically uninstall older driver versions. For that reason it may take a little while until the driver is installed and ready to use then repeat step3.

Step 5: Select language



Step 6: As soon as the installation process has completed click 'OK'.



Step 7: Reboot your PC.

Step 8: The symbol will now appear in the right-hand side of the Taskbar. You access the AY3 configuration menu by right clicking it.



Switch Orientation

Right-handed : The right hand is suitable

Left-handed : The left hand is suitable

Mode Switch

Advanced setting allows setting two button setting and use mode switch button to switch between Mode1 & Mode2.

Programmable Keys

Click	Menu	Universal Scrolling	Double Click
Assign a shortcut	Button off	IE Forward	IE Backward
Scroll up	Scroll down	Tilt Left	Tilt Right
Assign a launch	Fire button	On-To-Go	Windows Key
Open Driver	Mode Switch		

Click: Left mouse button.

Menu: Right mouse button. The context menu will open when you point to a document or folder using the mouse.

Universal scrolling: Mouse wheel function to scroll by moving the mouse.

Double-click: Left mouse button double click.

Assign a shortcut: A single keyboard command can be assigned to one of the mouse buttons.

Button off : Switches the button function off.

IE Forward: Select the next previously selected program or internet site.

IE Backward: Select the previous program or website

Scroll up: Scroll up the page you are currently viewing

Scroll down: Scroll down the page you are currently viewing

Tilt Left: Scroll horizontally to the left (only under Windows Vista™/ 7/8/8.1).

Tilt Right: Scroll horizontally to the right (only under Windows Vista™/ 7/8/8.1).

Assign a launch: Assign a launch program

Fire button: Left button twice click function

On-To-Go: The “On-To-Go” button click function: Press and hold the "On-To-Go" function button combined with pressing any other button, then that button function will click continuously. The repeat interval time can be configured.

Windows Key: Windows system key

Open Driver: Open AY3 gaming mouse AP

Mode Switch: Mode1:CPI LED light on the top flash 5 sec then off
Mode2:CPI Led light on the end flash 5 sec then off

Note:

Along with the left and right mouse buttons the mouse has 7 additional buttons which can be freely assigned with the functions available in the driver menu. You'll see the list of functions that can be assigned when you click on the dropdown menu to the side of the particular button.

Create/Save Profile

Create one of five profiles. For instance, you can save all button assignments, macros, color settings or sensitivity settings to a profile here.

As each different mouse assignment is best suited to different programs you can assign each program/game a special preset.

Once you've assigned all desired macros using the macro manager to different buttons, and perhaps made different color setting changes, save these. It's best to name the profile after the program or game for which you've configured the settings.

You can then also link it to the *.exe file of the program or game by entering the relevant path when saving the profile.

By linking a program to a profile, the mouse will Automatically switch to the relevant profile upon starting the respective game or program.

Load Profile

You can save your five ready-to-play profiles that you've downloaded or created in game. It is an easy way to share the profile with your friend as well.

Edit Profile

Here you can edit the names and the link of the selected profile. Use the link so that the mouse automatically detects the program you've programmed specific mouse settings or macros for.



Assign Macro	Macro Manager		
Multimedia	Open player	Pre Track	Next Track
	Play/Pause	Stop	Mute
	Volume Up	Volume Down	Select Player
Profile switch	Profile cycle	Profile up	Profile down
CPI Switch	CPI cycle	CPI up	CPI down
Windows	Calculator	Email	WWW Favorites
	WWW Forward	WWW Back	WWW Stop
	My Computer	WWW Refresh	WWW Home
	WWW Search		

Assign Macro

MACRO MANAGER

Creating a Macro(Basic Editor)

Step 1 :

you can add a macro set by pressing New or delete one by pressing Delete



Step 2:

If you click 'New' on the left hand window, you can assign a name to the macro like 'Arcane rotation' or 'Sniper rifle', Confirm the name by hitting the return/enter key.



Step 3:

Now you can enter a macro. To do that, Click the 'Start Record' button in the right-hand window. Enter the key Combination which you need for a special action in the game. The option 'Record delays between key commands' is located under the record button. This option allows you to determine how long a certain key should be pressed for. As a result it's possible to create a macro that instructs a figure in the game to only perform a specific action after a pre-determined period.



Step 4:

Click 'Stop Record' once you're done entering your key combination via the keyboard. You can now either record an additional macro in the macro set you've created or create new macro set. Click 'OK' when you're done.

The macro can now be assigned to any one of the six programmable buttons. You can assign the macro to a button by clicking onto the arrow next to the box of the button you want the macro to be assigned to.

In the following dropdown menu choose 'Assign Macro'.

All available macro sets are now displayed.

Select the one containing your macro of choice and then click on the respective macro.

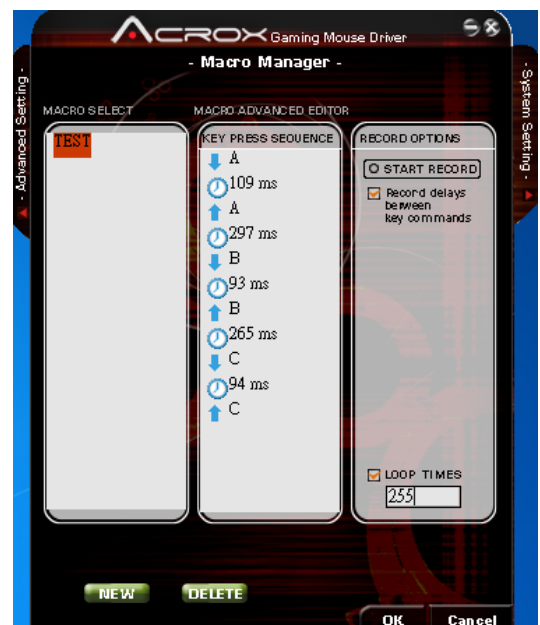


Note: if you've edited a macro that is already assigned to a particular button. You'll need to assign the macro to the desired mouse button again.

Step 5:

Assign the function to the mouse by clicking the 'Apply' Button without exiting the ACROX menu .It may take a few seconds until the information is transferred to the mouse. You can now store and save these settings under one of the five profiles that can be stored on the mouse. Profiles will be easier to manage if you name them after the game, gamer or program.

Note: A running macro can be ended at any time by clicking on the button again.



Integrate Mouse Clicks

Another special feature of the ACROX driver is that it allows you to integrate mouse clicks into a macro along with keyboard commands.

You can program a mouse event to be executed after, before or in-between a key sequence.

To do that, select the keyboard command in the 'Macro Manager' before or after which you want to insert a new event.

By right clicking, you can open a window that contains various options:



Start Record Before: Starts recording the macro before the selected event.

Start Record After: Starts recording the macro after the selected event.

Insert Delay:

Manually increase or decrease the delay between two Commands.

Insert Mouse Event:

Specify which mouse event should be executed. The following options are available:

Left Button: Left mouse button

Right Button: Right mouse button

Wheel: Centre mouse wheel button

Forward: next previously selected program button

Backward: previous program button



There are always three events to choose from:

Down: Keeps the button depressed

UP: Releases the button

Click: Executes the commands 'press' and 'release' in turn.

Note: The mouse scroll function of the mouse wheel is not possible to be program. Here too, only three Options are available; 'press'. 'release' as well

Edit Delay:

You can manually increase or decrease the delay

Here. All you need to do is enter the desired time Value; there's no need to enter 'ms'(milliseconds).

Note: Some games are unable to detect short delays.

Delete:

Delete the selected step from the macro's key sequence.

Multimedia

Open player: Start media player

Pre Track: Switch to the previous media track

Next Track: Switch to the next media track

Play/Pause: Switch between playing and pausing media

Stop: Stop playing the media in the media player

Mute: Mute (turns off) the computer's sound

Volume Up: Increase the computer's sound volume.

Volume Down: Decrease the computer's sound volume.

Select Player : Arrange default media player software.

Profile switch

Profile cycle: Cycle switch

Profile up: Reverse cycle switch

Profile down: Positive cycle switch

Note: Mouse include memory , can save five game profile setting (not include Macro key record)

Use one function key to switch the profile Profile change.

Profile light : All the LED flash 5 sec and back to activate status.

CPI Switch

CPI Cycle: Cycle switch (Default 800→3200→6400→800→3200) ◦

CPI Up : Reverse cycle switch (Default 800→3200→6400) ◦

CPI Down : Positive cycle switch (Default 800→6400→3200) ◦

Windows

Calculator: Start Microsoft Calculator

Email: Start the default e-mail program

WWW Favorites: Open the Internet Explorer Favorites

WWW Forward: Select the next internet site

WWW Back: Select the previous website

WWW Stop: Web Stop

My Computer: Open My Computer

WWW Refresh: Refresh the current Web page

WWW Home: Start the default Web browser and loads the home Web page

WWW Search: Open the Internet Explorer Search panel

SENSITIVITY

Sensitivity options

Adjust the overall moving sensitivity of the mouse sensor.

Select a moving sensitivity level on a scale of -90%~+100%.

CPI Switcher

Select the desired resolution(s) of the mouse sensor here.

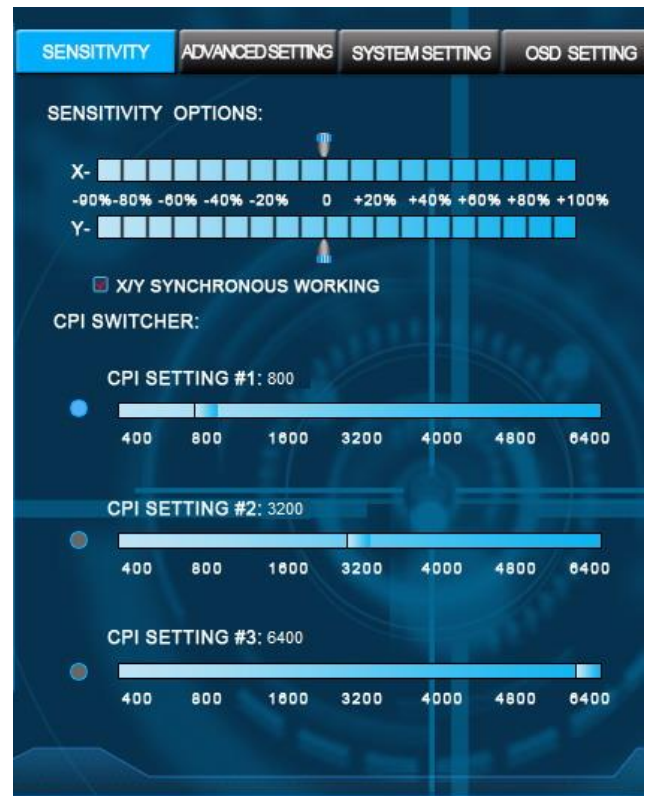
The arrow beneath the number bar shows which dpi value is currently active.
we recommend using the mouse with a resolution of 800dpi at first then increasing the dpi resolution in steps as soon as you become accustomed to the speed.

CPI setting

- Default CPI switch between 800/3200/6400, default setting is CPI 800
- These CPI settings are also easily adjustable if you want to personalize your settings
From 400 – 6400 ◦
- Customizable CPI setting ,use CPI function key to switch ◦

CPI display

- First (Default 800) LED on the top flash 5 sec then off ,second Led off
- Second (Default 3200) LED on the top off, second LED flash 5 sec then off
- Third (Default 6400) Both LED flash 5 sec then off.



Advanced Setting

Polling Rate:

The term 'polling rate' describes the number of times the computer prompts the mouse for information. A high polling rate in conjunction with a high dpi setting ensures smooth pointer movement. We recommend that you start off with a resolution of 800dpi and a polling rate of 1000Hz.

Note: In general a high polling rate produces a rounder and softer pointer movement.



Light effect switch

Set up Light LED ON/OFF

Light effect type options

Set up Light LED Full lightened or breathing

Driver Reset

By clicking the RESET button, all the settings you have made will be reset to their original factory default settings.

ON-TO-GO SPEED

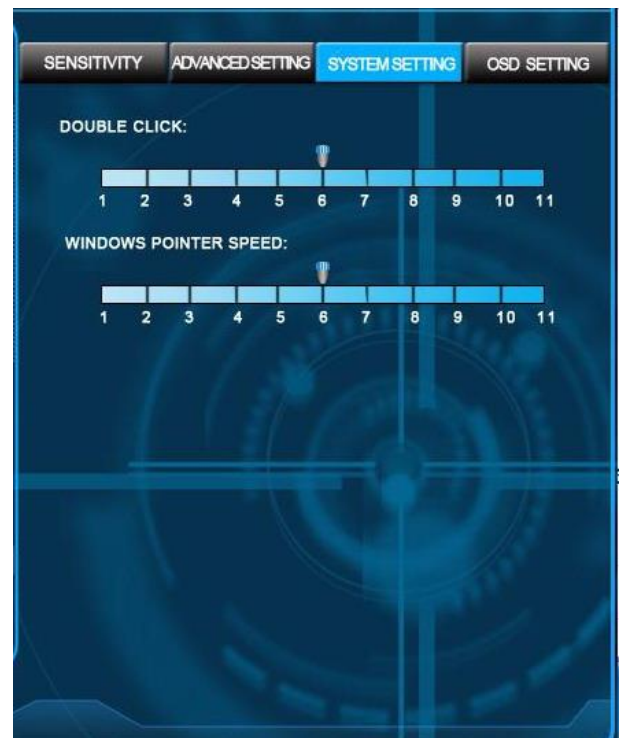
Enable to set up click delay time between 2 to 255 milli-seconds

SYSTEM SETTING

Double Click

Configure the double-click response speed here. Closer to 1 means the interval between two mouse clicks is long. closer to 11 means that the interval between clicks is particularly short.

Note: Please note that all settings must be Transferred to the mouse by clicking the 'Apply' button.



Windows Pointer Speed

Set the speed of the mouse pointer on a scale of 1 to 11 here. This is the same as the value that has been set in the Windows Control Panel.

Note: Acrox™ recommends to keep the default settings.

OSD Setting

A variety of information can be displayed with On Screen Display function based on user selection. The contents which is selected in the AP software are shown in the OSD. A minimum set of modules for the OSD is provided as part of the AP software: CPU & RAM · Profile status · Macro execute status · New email · Skype.

On screen display

CPU Loading

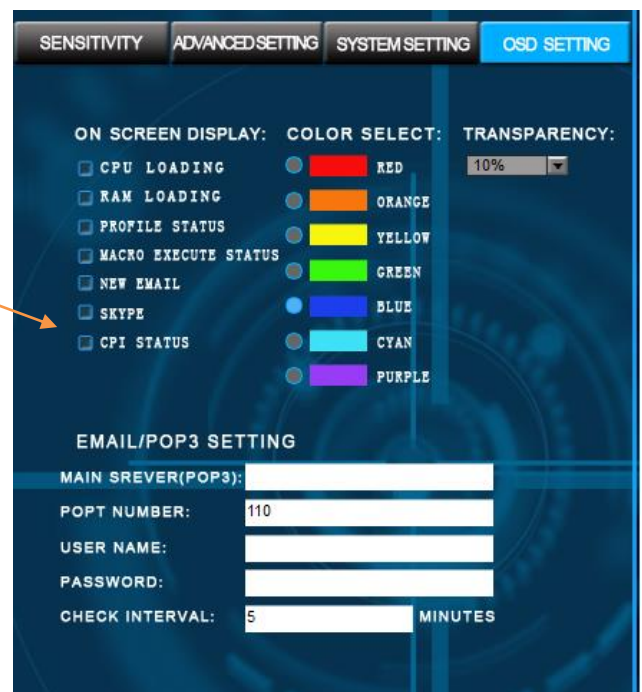
CPU Loading status

RAM Loading

RAM Loading status

Profile Status

When profile is changed by the profile button or key, and Driver/AP automatically shows OSD profile status panel.



Macro execute status

When any macro button or key is pressed by the user, and Driver/AP automated howing the panel of OSD Macro execute status.

New Email

New email notice

Skype

Instant message notice

CPI Status

CPI status

Color select

OSD Windows Colors : Here are Red 、 Orange 、 Yellow 、 Blue 、 Cyan 、 Green 、 Purple, seven colors for your options.

Transparency

OSD transparency is adjustable from 10% to 100%.

Email / POP3 setting

Mail Server (POP3)

Set up your external mail server

Port Number

Set up your port number.

User Name

Set up your user name.

Password

Set up your password.

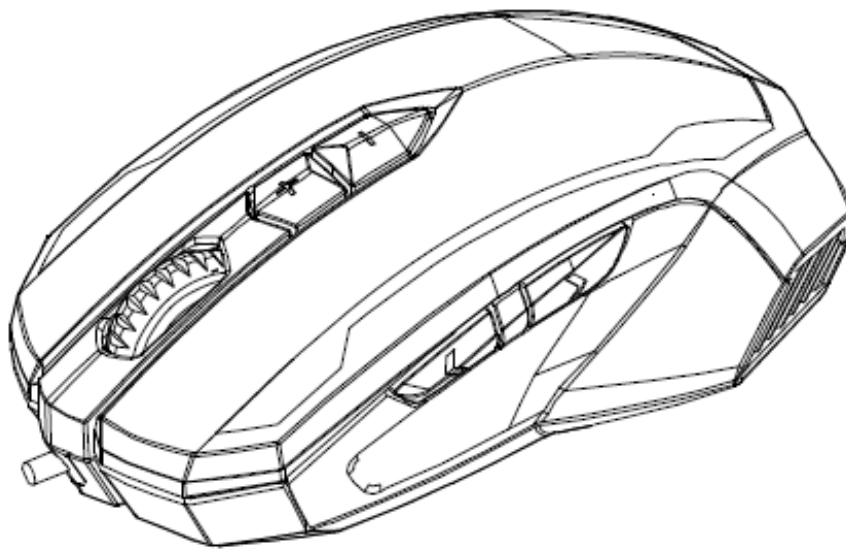
Check interval Set up the new mail notice.

Note: When minimizing the game, tick off the option in OSD

Gaming Mouse

OWNER'S GUIDE

Ver.:1.00



CAUTION: To use this product properly, please read the user's guide before installing.

Federal Communication Commission Interference Statement

This equipment has been tested and found to comply with the limits for a Class B digital device, pursuant to Part 15 of the FCC Rules. These limits are designed to provide reasonable protection against harmful interference in a residential installation. This equipment generates, uses and can radiate radio frequency energy and, if not installed and used in accordance with the instructions, may cause harmful interference to radio communications.

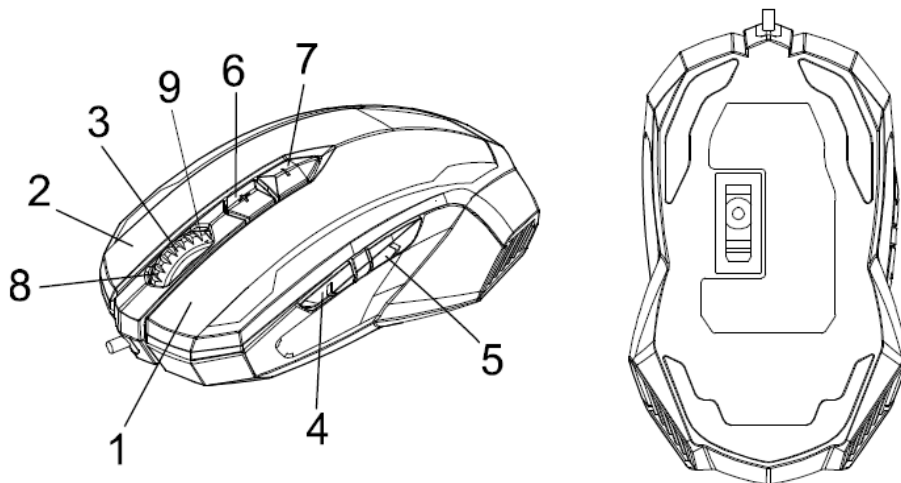
However, there is no guarantee that interference will not occur in a particular installation. If this equipment does cause harmful interference to radio or television reception, which can be determined by turning the equipment off and on, the user is encouraged to try to correct the interference by one of the following measures:

- Reorient or relocate the receiving antenna.
- Increase the separation between the equipment and receiver.
- Connect the equipment into an outlet on a circuit different from that to which the receiver is connected.
- Consult the dealer or an experienced radio/TV technician for help.

FCC Caution: Any changes or modifications not expressly approved by the party responsible for compliance could void the user's authority to operate this equipment.

This device complies with Part 15 of the FCC Rules. Operation is subject to the following two conditions: (1) This device may not cause harmful interference, and (2) this device must accept any interference received, including interference that may cause undesired operation.

Mouse Buttons



1. 滑鼠左鍵

2. 滑鼠右鍵

3. 滾輪

4. 下一頁

5. 上一頁

6. CPI 調升

7. CPI 調降

8. Scroll up

9. Scroll down

上一頁

在網路瀏覽器中使用此鍵可以回到上一個瀏覽頁面.

下一頁

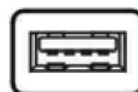
在網路瀏覽器中使用此鍵可以跳至下一個瀏覽頁面.

For USB port installation

1. 將滑鼠USB 連接至電腦USB 上

2. 電腦將會自動偵測新硬體並自動安裝驅動程式

3. 當驅動安裝完畢您可以在您的電腦上使用此滑鼠



系統需求

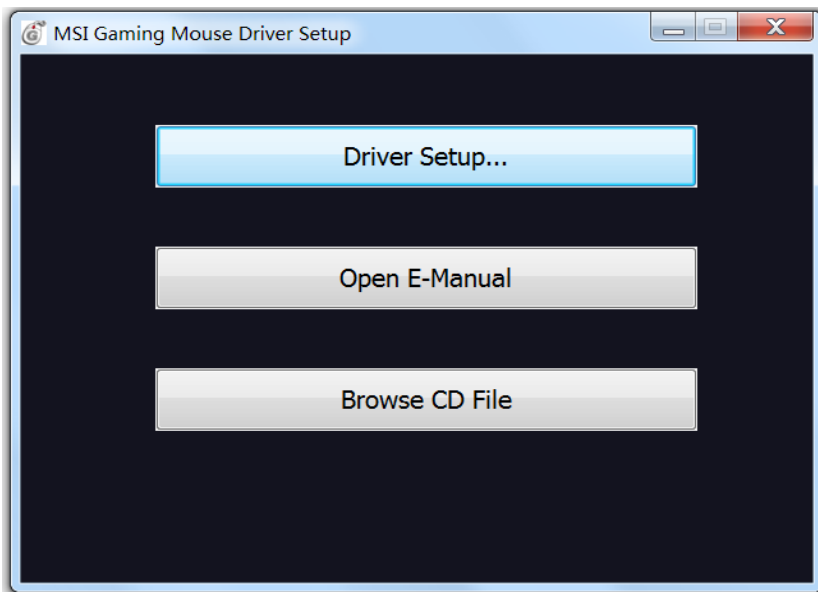
- Windows® XP/Vista/7/8/8.1
- Free USB port
- CD-ROM driver
- 25MB free hard disk space

安裝步驟

步驟 1: 將滑鼠安裝置電腦 usb port 上 .

步驟 2: 作業系統將會自動安裝對應驅動程式.

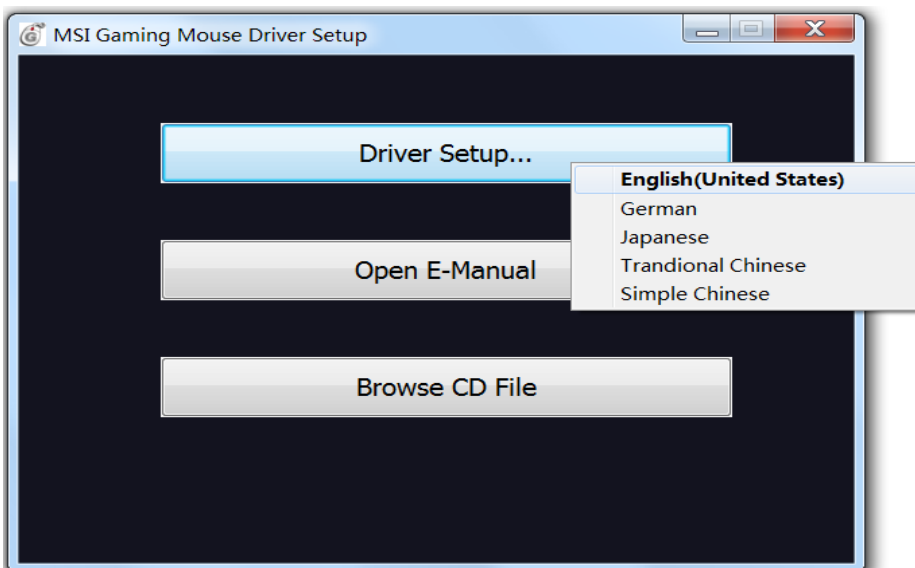
步驟 3: 點擊驅動程式光碟中 “Setup.exe”進行驅動程式安裝.



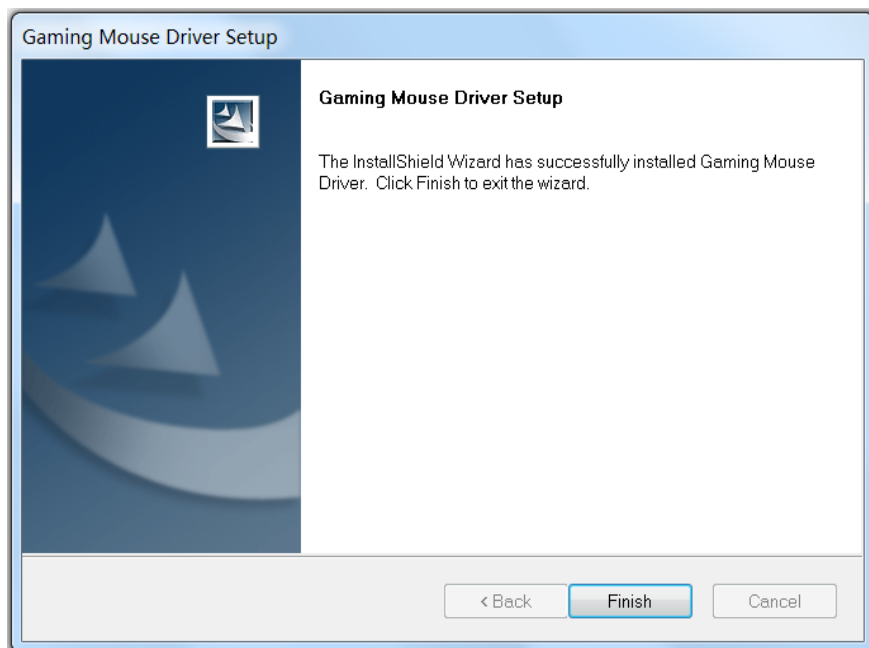
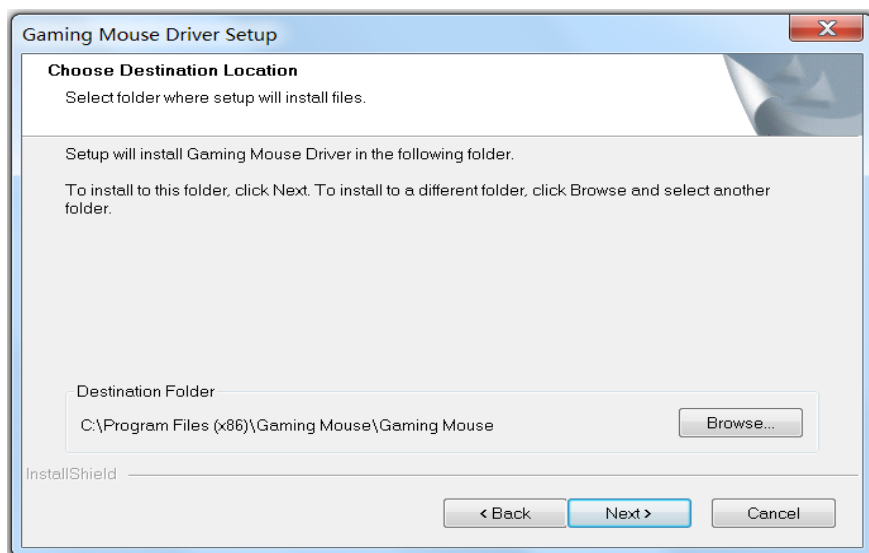
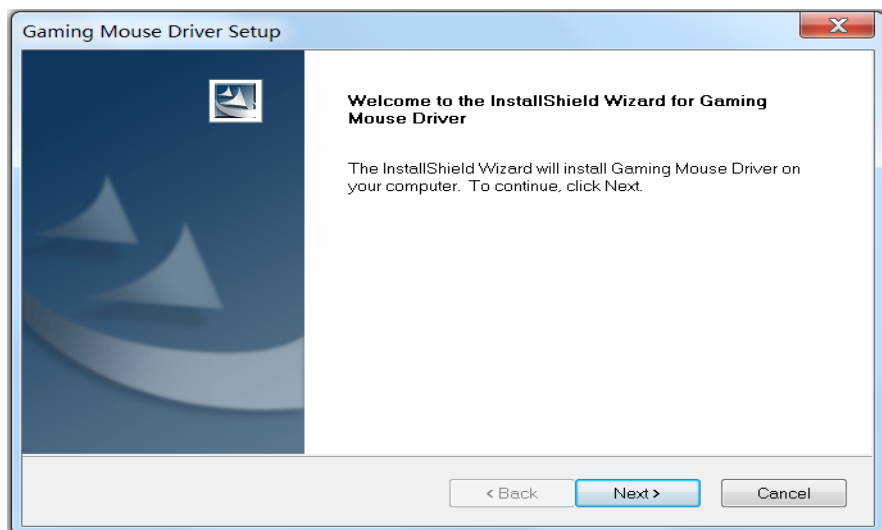
步驟 4: 當安裝驅動程式時,Windows® 作業系統將會提示您此驅動程式尚未通過認證,您可以忽略此提示點選下一步繼續完成安裝.

注意事項:驅動程式於安裝時會自動返安裝舊版本驅動程式,當反安裝完畢後請重複步驟 3 進行驅動安裝.

步驟 5:選擇使用語言(內含五國語言)



步驟 6: 當驅動程式完成安裝後請點選 **OK** 按鈕完成安裝’.



步驟 7: 將電腦重新啟動

步驟 8: 驅動程式將會長駐於作業系統工具列,當您右鍵點擊他將可啟動設定



左右手適用

對稱式滑鼠設計可以完全符合使用者需求不管是左手還是右手使用者

Mode Switch

進階設定可以讓您設定二組按鍵設定且使用切換按鈕切換設定值

可程式化定義按鍵

點擊鍵	啟動目錄	通用滾輪	雙擊
指定快速捷徑	Button off	瀏覽器下一頁	瀏覽器上一頁
滾輪向上	滾輪向下	滾輪向左	滾輪向右
指定快速開啟	射擊鍵	On-To-Go	Windows 快速鍵
開啟軟體	模式切換		

Click 點擊鍵:滑鼠左按鍵.

目錄鍵: 滑鼠右鍵點擊.當選取目標後點擊右鍵開啟目錄

通用滾動:透過滑鼠移動滾動畫面

滑鼠雙擊: 滑鼠左鍵雙點擊

設定捷徑：設定鍵盤指令到滑鼠按鍵

按鍵關閉：關閉功能鍵 f.

瀏覽器上一頁：網頁瀏覽器上一頁面

瀏覽器下一頁：網頁瀏覽器下一頁面

滾輪向上：滾輪向上滾動畫面

滾輪向下：滾輪向下滾動畫面

Tilt Left: 滾輪向左壓(只支援 Windows Vista™/ 7/8/8.1).

Tilt Right: 滾輪向右壓 (只支援 Windows Vista™/ 7/8/8.1).

指定開啟軟體：指定設定開啟的軟體

射擊鍵：左鍵雙點擊選項

On-To-Go: The “On-To-Go” button click function: Hold pressed the “On-To-Go” button and combined with any button pressing, then this button click function will continue to auto-repeat working.

Windows 功能鍵: Windows 系統功能鍵

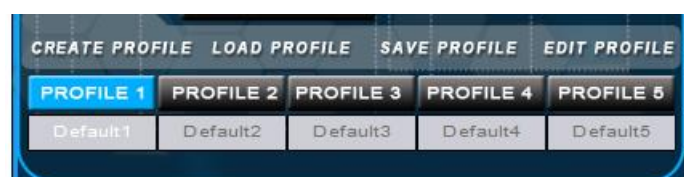
開啟滑鼠設定頁面：開啟滑鼠設定軟體

模式切換鈕:模式 1:CPI LED 上方燈號閃爍 5 秒後關閉
模式 2:CPI 下方燈號閃爍 5 秒後關閉

Note: 滑鼠本體上共有七組按鈕可以透過驅動程式內設定的選項自由訂義分配功能,或是使用下拉式選單定義功能

新增/儲存設定檔

新增一個設定檔(內建五個設定檔儲存),可以全部的自定義按鍵功能,巨集顏色設定&滑鼠敏感度調整到設定檔中.可以根據不同軟體或是遊戲的按鍵需求定義最佳的按鍵配置.



一旦設定完成所需要的巨集按鍵定義或是不同的顏色變化選項,你可針對此設定給予對應的命名,這樣有助於您管理自定義檔案

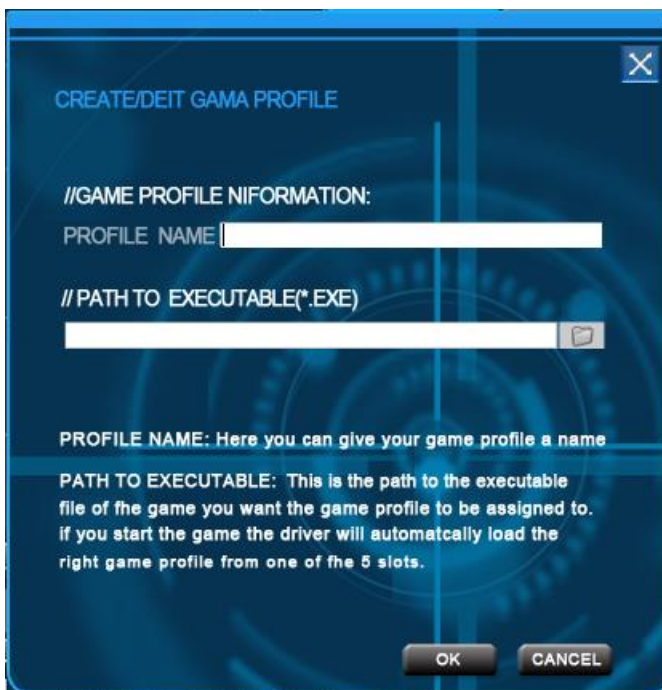
你也可以透過軟體將配置輸出成為.exe file .到對應的目錄,當您透過連接到軟體滑鼠會自動切換到你預先設定的定義檔案

讀取設定檔

可以將設定好的定義檔儲存,或是下載別人已經儲存好的定義檔案這是個簡單的方式去分享自己的滑鼠設定給好友

修改設定檔案

透過軟體可以編輯設定檔名稱&連結.使用連結功能滑鼠會自動偵測你正在啟動的軟體並切換到對應的設定檔



Assign Macro	巨集管理員		
多媒體	開啟媒體播放	上一段	下一段
	播放/暫停	停止	靜音
	音量增加	音量降低	選定播放器
設定檔切換	設定檔切換	上一個設定檔	下一個設定檔
CPI 切換	CPI 切換	上一個 CPI	下一個 CPI
作業系統功能	行事曆	電子郵件	瀏覽器我的最愛
	瀏覽器下一頁	瀏覽器上一頁	瀏覽器更新停止
	我的電腦	瀏覽器更新	瀏覽器首頁
	瀏覽器搜尋		

指定巨集

巨集管理員

紀錄巨集 (基本編修)

步驟 1:

可以透過按下新增或是刪除按鍵開始增加一個新的巨集或是刪除巨集

步驟 2:

如果按下新增按鈕可以指定一個巨集名稱,並可以透過後退&輸入鍵編修巨集名稱



步驟 3:

現在可以輸入新的巨集,按下開始記錄之後可以開始輸入組合鍵去對應您所需的遊戲動作,選項中紀錄鍵值延遲功能可以允許您指定某些關鍵組合的時間設定 因此可以創造一個巨集指定遊戲中的動作並設定對應時間後的動作



步驟 4:

點擊結束錄製當您已經完成組合鍵輸入.

現在巨集已經紀錄完成.當你點擊 OK

後巨集紀錄已經完成.

現在您可以將巨集指定到六個可以自定義按鈕.你可以將巨集指定到任何一個按鈕透過點擊旁邊的箭頭來指定.

在下方的下拉式選單中選擇指定巨集可以顯示目前所有巨集設定



Note: 如果您設定的巨集已經指定給特定按鈕,需要將巨集指定到特定的按鈕

Step 5:

當指定巨集完成後點擊應用鈕,後將會需要時間將設定訊息傳送至滑鼠
現在可以將設定保存在滑鼠的記憶體內
這樣可以更輕鬆管理各個針對不同需求的滑鼠按鍵配置並針對不同的軟體或是遊戲獲得最佳的按鍵配置

Note: 正在使用的巨集可以透過按鍵隨時切換



Integrate Mouse Clicks

另外一個特殊的功能設定為可以透過巨集設定將滑鼠按鍵跟鍵盤指令.您可以設定一個滑鼠動作接續在鍵盤指令之前或世之後

要達成這樣的目的你必須在鍵盤命令巨集管理員選定之前或是之後建立一個新的指令點擊滑鼠右鍵你可以打開軟體選單其中包含了各式的選項

在紀錄之前: 開始紀錄巨集指令在選定事件之前

在紀錄之後: 開始紀錄巨集指令在選定事件之後

插入延遲訊號:

手動修正二個命令之間的延遲時間

插入滑鼠事件:

指定哪些滑鼠事件被執行



Note: 滑鼠的鼠標滾輪是不可程式化內定的設定選項只有”按下”及”釋放”。

Note: 部分遊戲無法正確的偵測到短延遲

滑鼠左鍵: 滑鼠左按鍵
滑鼠右鍵: 滑鼠右按鍵
滑鼠滾輪: 滑鼠滾輪中鍵
下一動作: 下一個按鈕
上一動作: 上一個按鈕

所有的選項都有內定的三個選項:

Down: 保持按鍵
UP: 釋放按鍵
點擊: 執行命令”按下”及”釋放”功能.

編輯延遲

可以手動增加或是減少按鍵延遲時間.
所需要的只是簡單的輸入所需要的毫秒

多媒體

打開軟體: 開啟媒體播放軟體
上一段: 上一段
下一段: 下一段
播放/暫停: 播放媒體&暫停播放
停止: 停止播放媒體
靜音: 關閉媒體音量
音量上升: 增加電腦播放音量.
音量降低: 降低電腦播放音量.
選擇軟體: 設定預設播放媒體軟體.

設定檔切換

設定檔切換: 循環切換
上一個設定檔: 上一個設定檔
下一個設定檔: 下一個設定檔

CPI 切換

CPI 循環: 循環切換 (預設 800→3200→6400→800→3200)。
上一個 CPI: 反向循環 (預設 800→3200→6400)。
下一個 CPI: 正向循環 (預設 800→6400→3200)。

Note: 滑鼠內建記憶體可以儲存五組自定義設定(不包含巨集設定)
使用切換鍵可以在設定檔間切換
設定檔切換燈號: 當切換設定檔 LED 會閃爍 5 秒
然後啟動設定.

Windows 功能

行事曆: 開啟 windows 行事曆軟體

電子郵件: 啟動預設電子郵件軟體

IE 我的最愛: 開啟 IE 瀏覽器我的最愛

WWW 下一頁: 瀏覽器下一頁

WWW 上一頁: 瀏覽器上一頁

瀏覽器停止: 瀏覽器停止更新

我的電腦: 開啟我的電腦

瀏覽器網頁更新: 更新瀏覽器畫面

瀏覽器首頁: 開啟瀏覽器預設首頁

瀏覽器搜尋: 開啟瀏覽器搜尋頁面

靈敏度選項

此選項可調整滑鼠感應器的靈敏度

調整設定值切換滑鼠感應靈敏度
(-90%~+100%.)

CPI 切換

此選項可以選擇滑鼠 CPI 設定。

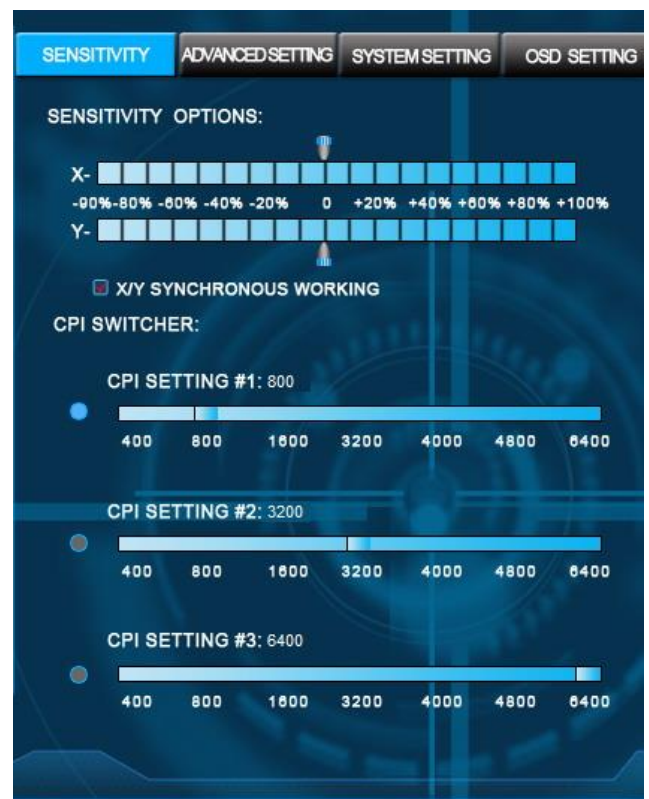
箭頭指標下方顯示目前 CPI 設定,
我們建議使用預設的 800dpi 作為
初始設定當您熟悉了移動速度再逐步
增加 CPI

CPI 設定

- 預設 CPI 設定值為 CPI 800 初始的切換為 800/3200/6400
- CPI 設定畫面讓您輕鬆的改變設定值,設定為個人化設定(設定可調整值為 400~6400CPI)。
- 自定義 CPI 設定 ,使用 CPI 切換鈕在不同 CPI 隻簽切換 。

CPI 顯示

- 設定一 (初始值 800) 上方 LED 閃爍 5 秒後關閉.下方 LED 為關閉狀態
- 設定二 (初始值 3200 CPI) 上方 LED 關閉,下方 LED 閃爍 5 秒後關閉
- 設定三 (初始值 6400) 上下 LED 閃爍 5 秒後關閉



進階設定

滾輪滾動速度

The term 'polling rate' describes the number of times the computer prompts the mouse for information. A high polling rate in conjunction with a high dpi setting ensures smooth pointer movement. We recommend that you start off with a resolution of 800dpi and a polling rate of 1000Hz.

Note: 一般狀況下提高滾輪滾動率會使指標移動速度緩慢.



燈光效果開關

設定 LED 燈光系統 開關

燈光效果設定 **Light effect type options**

設定滑鼠燈光效果(可以設定為全亮或呼吸燈效果)

還原設定值

當選擇此選項將會將滑鼠設定值還原至出廠的狀態,所有的自定義按鍵將會失

ON-TO-GO SPEED

透過軟體可以設定滑鼠點擊延遲率(2~255MS)

系統設定值

滑鼠雙點擊

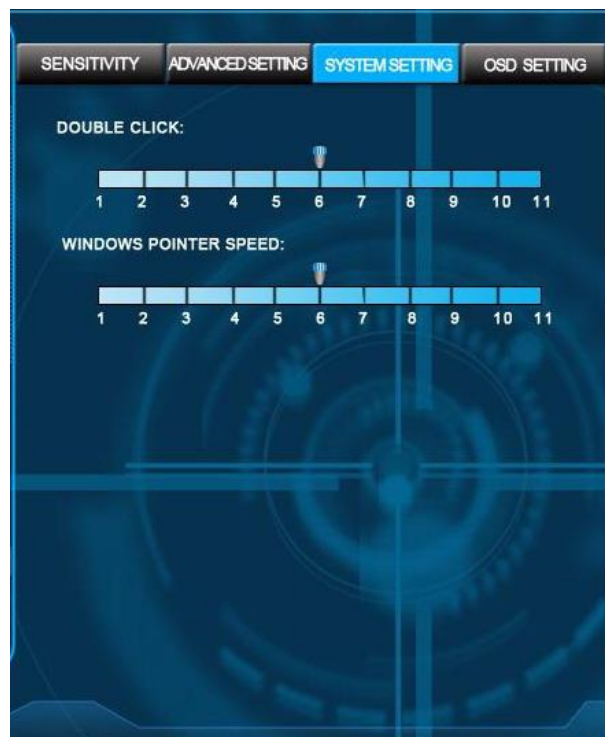
雙鼠雙按速度設定,當設定值趨近於 1 時表示雙擊時間越長,當設定值趨近於 11 時表示雙擊時間越短

Note: 所有的設定值必須按下 **APPLY** 後方生效

Windows 游標速度設定

設定滑鼠游標速度,設定值區間為 1~11 這與作業系統內建的設定值相同

Note: 此部分設定建議使用預設設定值 default settings



OSD Setting

桌面即時顯示設定

不同的即時狀態都會透過 OSD 桌面即時顯示軟體通知使用者,這取決於使用者的通知設定. 透過軟體的設定可以顯示軟體內建相關訊息的通知:軟體顯示訊息包含了 CPU & RAM、Profile status、Macro execute status、New email、Skype

桌面即時顯示

CPU 使用率

CPU 使用狀況

記憶體使用率

記憶體使用狀況

設定檔狀態

當設定檔變更設定軟體將會

即時顯示設定檔狀態

巨集執行狀態

當任何巨集按鍵或是設定被按下,軟體將會即時顯示巨集執行狀態 .

新郵件

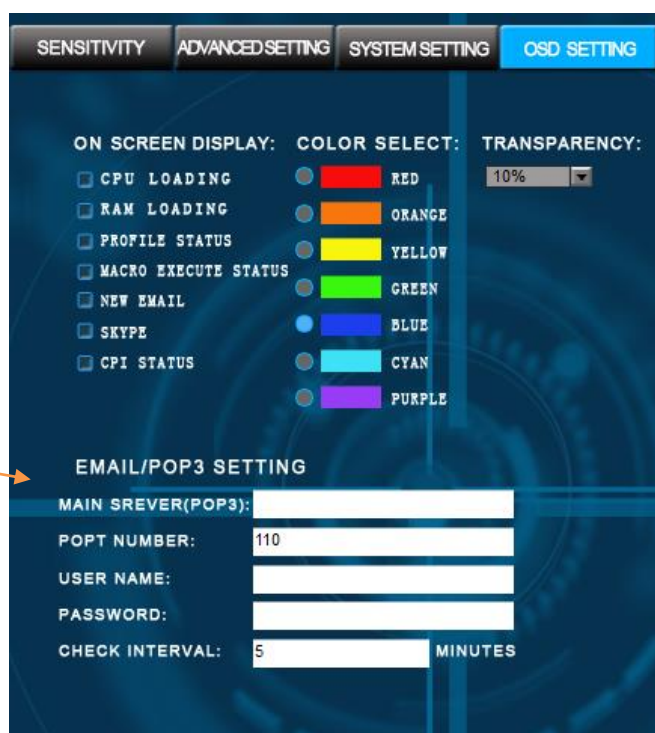
新郵件送達通知

Skype

Skype 訊息通知

CPI 狀態

CPI 狀態



顏色選擇

桌面即時顯示顏色設定: 這裡有紅，橙，黃，綠，藍，青，紫，七種顏色供您選擇

桌面即時顯示設定

桌面即時顯示透明度設定(設定值 10%~100%).

郵件 / POP3 設定

POP3 郵件伺服器

Set up your external mail server

Port 設定

設定郵件傳輸 port.

使用者名稱

設定使用者名稱.

密碼

設定郵件密碼

郵件檢查時間

設定新郵件到達通知.

Note: 當遊戲被最小化時，請把 OSD 勾選提示解除