

MSI GTX 1070 GAMING X 8G

BIOS UPDATE GUIDE

OCMode default, GamingMode default

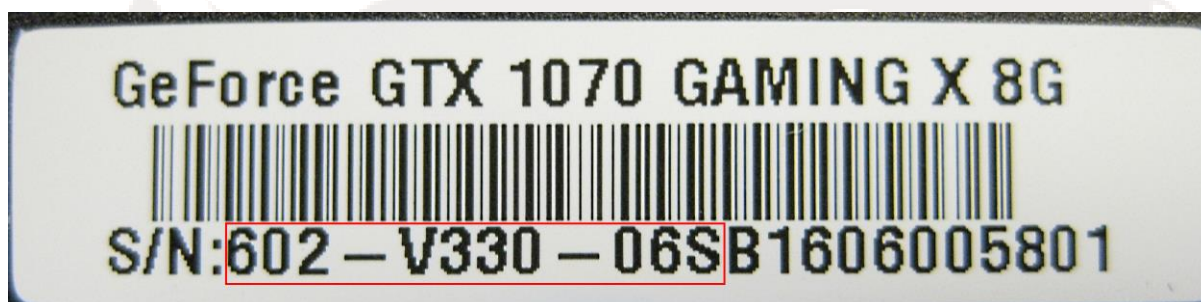
Intro

Purpose

This guide will explain how you can switch the bios on your GTX 1070 GAMING X 8G from GamingMode default to OCMODE default (and vice versa)

Hardware Requirements

This guide is only meant for updating the bios on MSI GTX 1070 GAMING X 8G graphics cards that start with Serial Number: 602-V330-06S.....



Software Requirements

The bios of the MSI GTX 1070 GAMING X 8G graphics card can be updated in 64 bit versions of Windows 7, 8.x and 10.

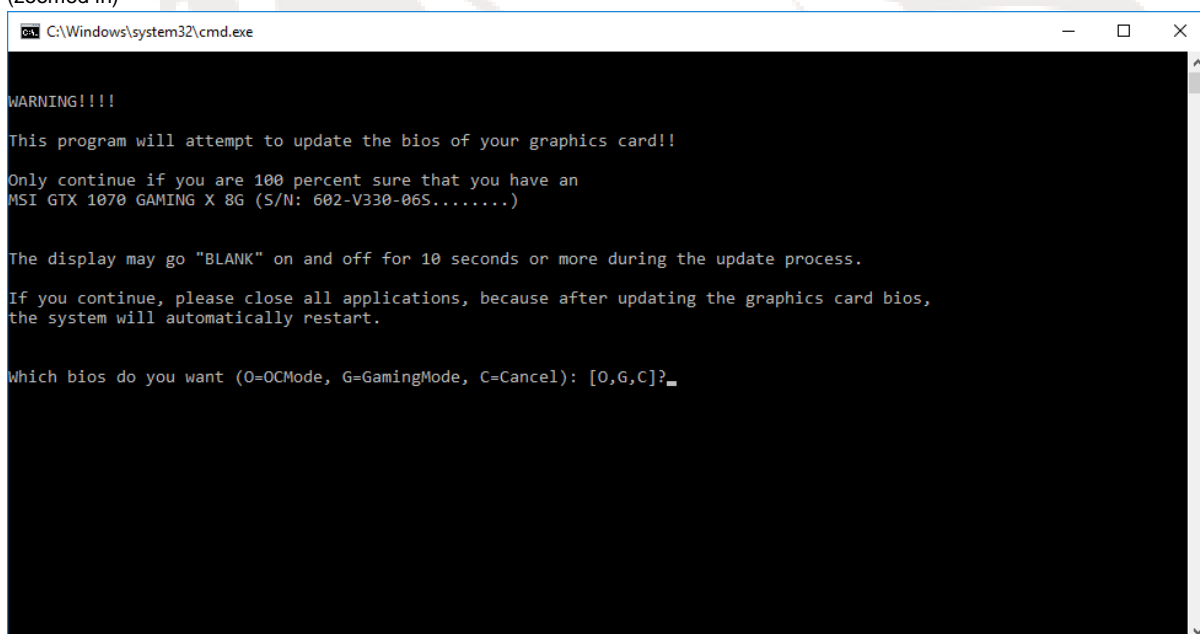
This guide will assume you have extracted all the files from the zip-file to a folder and run the batch file from that particular folder (running the batch file from within the zip file won't work).

Updating the bios



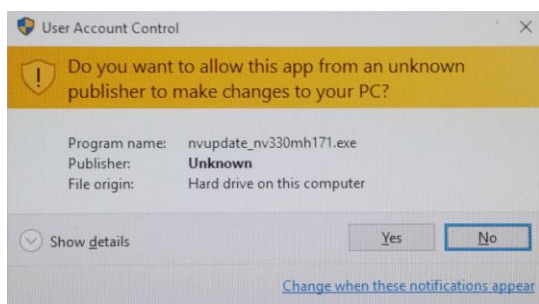
Double click "GTX_1070_GAMING_X_8G_602-V330-06S_vbios_v1.1.bat" to start the process

(zoomed in)



press O for OCMode default bios, press G for GamingMode default bios and press C to Cancel the update process.

The Nvidia update utility will be started and asks your permission for execution:



Click Yes to allow the Nvidia update utility to start in a new Window.

If you switch from a GamingMode bios to an OCMode bios it will use nvupdate_nv330mh171.exe.

If you switch from a OCMode bios to a GamingMode bios it will use nvupdate_nv330mh112.exe

Graphics card bios will be updated:

```
C:\Users\MSIadmin\Desktop\GTX_1070_GAMING_X_8G_602-V330-06S_vbios_v1.1\nvupdate_nv330mh171.exe

NVIDIA Firmware Update Utility
Version 5.287.0

*** IMPORTANT ***
Do not turn off the computer or attempt to reboot your computer while the
NVIDIA firmware is being updated. If the computer is turned off, or
power is lost, you may be unable to restart your computer.

Searching for display adapters to update...
VGA BIOS Version: 86.04.1E.00.40
Found display adapter suitable for this upgrade.
Graphics Device (10DE,1B81,1462,3302) H:--:NRM S:00,B:01,D:00,F:00
UPGRADE WILL BEGIN IN ABOUT 3 SECONDS.

The display may go *BLANK* on and off for up to 10 seconds or more during the update process depending on your display a
dapter and output device.

Storing updated firmware image...
.....
Verifying update...
Update successful.

Firmware image has been updated from version 86.04.1E.00.41 to 86.04.1E.00.40.
A reboot is required for the update to take effect.

No more matches found.

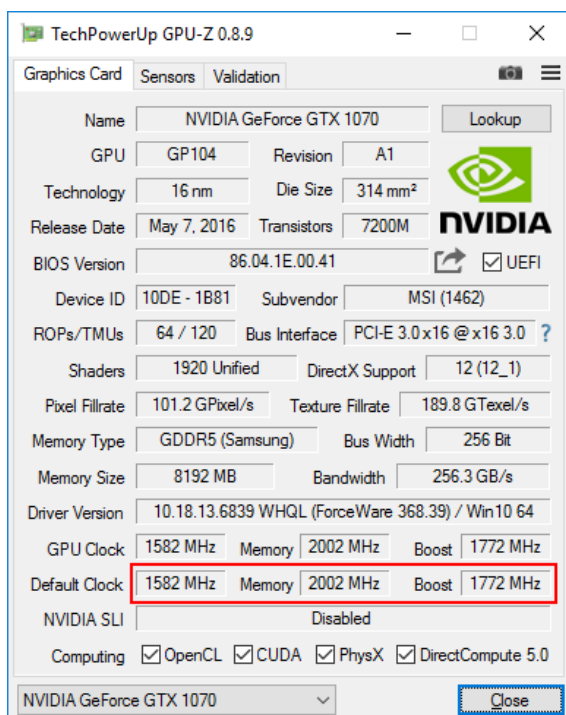
System will reset now!
```

Afterwards system will automatically restart to activate the new bios.

Checking the bios' default mode

In order to check which default mode your bios has you can use [GPU-Z](#).

GTX 1070 GAMING X 8G : Gaming Mode



GTX 1070 GAMING X 8G : OC Mode

