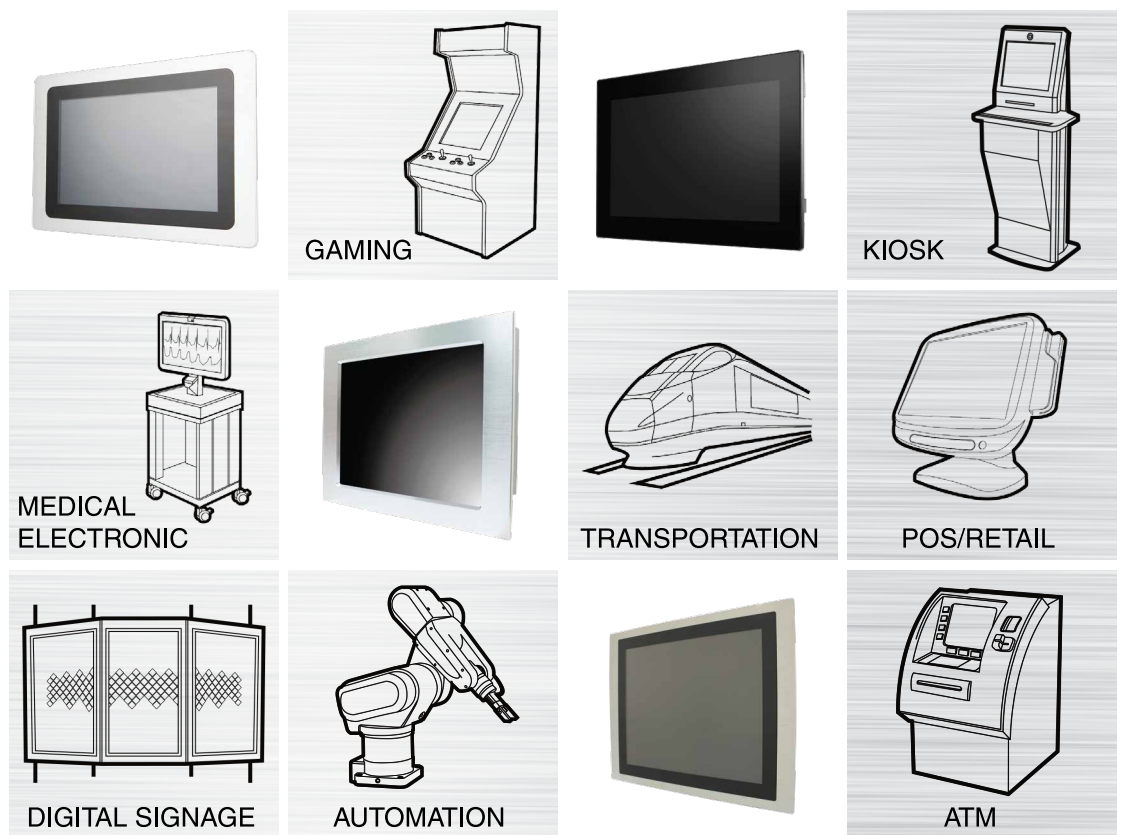


## HMI Panel PC

We Customize Your Business



HMI Solutions are front bezel IP65, designed in slim and stylish housing for industrial and commercial applications.

# HMI C-series

## Intel® Low-Power Industrial Panel PCs

Available in Sizes 7", 10.1", 10.4" & 12.1"

- Projective Capacitive(PCAP) Multi-Touch Screen
- Surface Hardness: 7H
- IP65 Front Panel with Compact and Slim design
- Fanless Design

**MS-HMICXXX**



Flush Bezel



Waterproof Sponge



Clip mount



	MS-HMIC070A	MS-HMIC101A	MS-HMIC104A	MS-HMIC121A
Size / Aspect Ratio	7"	10.1"	10.4"	12.1"
Backlight	LED	LED	LED	LED
Resolution	1024x600	1280x800	1024x768	1024x768
Colors	16.7M	262K	16.2 M	16.2 M
Luminance (cd/m2)	320	300	350	500
Contrast Ratio	500:1	1300:1	1200:1	700:1
Viewing Angle (H°/V°)	150/145	160/160	176/176	160/160
MTBF (hrs)	50,000	50,000	50,000	50,000
Touch Screen	PCT	PCT	PCT	PCT
Dimension (W x H x D, mm)	232.3 x 166 x 62	301.7 x 207.8 x 57.5	297 x 240.1 x 59.8	332.2 x 262.7 x 61
Weight (KG)	3	4	3	4
Processor	Intel® Bay Trail Celeron® Processor J1900 2.0 GHz, up to 2.42 GHz, QC, 10W			
Memory	1 x 204-pin DDR3L SO-DIMM, up to 8 GB			
Display	1 x VGA , 1 x HDMI			
I/O Port	2 x Intel® I210-AT GbE GLAN			
	1 x USB 3.0 3 x USB 2.0			
	1 x RS-232/422/485, 0V/5V/12V 1 x RS-232, 0V/5V/12V			
Expansion Slot	2 x Full-size (one w/ mSATA)			
Storage	1 x SATA 2.0 for 2.5" HDD/SSD			
Power Supply	DC-in 12V/19V/24V			
Operation Temperature	0 ~ 45°C			
Storage Humidity	10 ~ 90%, non-condensing			
Mount	VESA 75x75mm Panel mount / Clip mount			
OS Support	Windows 7 (32/64-bit) Windows 8.1 (32/64-bit) Windows 10 (64-bit)			
Optional	External Antenna x 1 or 2 Waterproof Sponge			



KIOSK



Industrial Control



Transportation



Automation

Available in Sizes 15", 15.6", 17", 19" & 21.5"

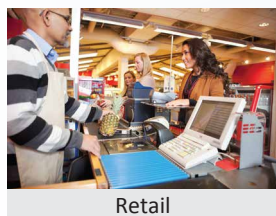
- Projective Capacitive(PCAP) Multi-Touch Screen
- Surface Hardness: 7H
- IP65 Front Panel
- Fanless Design

MS-HMICXXXX

MS-9A91



	MS-HMIC150A	MS-HMIC170A	MS-HMIC190A	MS-HMIC215A	MS-9A91
Size / Aspect Ratio	15" TFT (4:3)	17" TFT (4:3)	19" TFT (4:3)	21.5" TFT (16:9)	15.6" TFT (16:9)
Backlight	LED				
Resolution	1024 x 768	1280 x 1024		1920 x 1080	1366 x 768
Colors	16.2 M	16.7 M			
Luminance (cd/m2)	400	350	250	300	300
Contrast Ratio	700:1	1000:1		3000:1	500:1
Viewing Angle (H°/V°)	160/160	140/170	170/160	178/178	160/160
MTBF (hrs)	50,000				
Touch Screen	PCT				
Dimension (W x H x D, mm)	441 x 322 x 81.1	483 x 376 x 70.8	528 x 414.4 x 71.8	607 x 395 x 72.8	418 x 271 x 60
Weight (KG)	10	14	14.5		5.04
Processor	Intel® Bay Trail Celeron® Processor J1900 2.0 GHz, up to 2.42 GHz, QC, 10W				Intel® Bay Trail Atom™ Processor E3845, 1.91 GHz, QC, 10W
Memory	1 x 204-pin DDR3L SO-DIMM, up to 8 GB				2 x 204-pin DDR3L SO-DIMM, up to 8 GB
Display	1 x VGA				
I/O Port	1 x Realtek® RTL8111G GbE GLAN				2 x Realtek® RTL8111E GbE GLAN
	1 x Mic-in, 1 x Line-out				1 x Line-out
	4 x USB 2.0				1 x USB3.0, 5 x USB2.0
	1 x RS232, 0V/5V/12V 1 x RS-232, w/o power				2 x RS-232/422/485, 0V/5V/12V(D-Sub Type) 2 x RS-232, 0V/5V/12V(RJ-45 Type)
Expansion Slot	1 x Full-size (w/ mSATA)				1 x Half-size mini-PCIe, 1 x Full-size mSATA
Storage	1 x SATA 2.0 for 2.5" HDD/SSD				
Power Supply	DC-in 12V				DC-in 12V or 12V/19V/24V
Operation Temperature	0 ~ 45°C				-10 ~ 45°C(HDD), -10 ~ 50°C(SSD)
Storage Humidity	10 ~ 90%, non-condensing				
Mount	VESA 100x100mm Panel mount / Clip mount				VESA 75x75/100x100mm Clip mount
OS Support	Windows 7 (32/64-bit) Windows 8.1 (32/64-bit) Windows 10 (64-bit)				
Optional	External Antenna x 1 or 2 Waterproof Sponge 3rd RS232 w/o power 2nd GbE LAN X1, 2nd Memory Slot X 1				External Antenna x 1 or 2



# HMI R-series

## Intel® Low-Power Industrial Panel PCs

Available in Sizes 12.1", 15", 17", 18.5", 19" & 21.5"

- 5-wire Resistive Single-Touch Screen
- Surface Hardness: 3H
- IP65 Front Panel
- Fanless design

**MS-HMIRXXXX**



Anodized & Hairy Brushed



Rear I/O



Clip mount



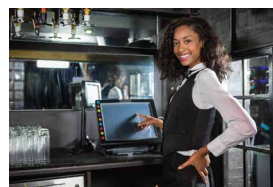
	MS-HMIR121A	MS-HMIR150A	MS-HMIR170A	MS-HMIR185A	MS-HMIR190A	MS-HMIR215A
Size / Aspect Ratio	12.1" TFT (4:3)	15" TFT (4:3)	17" TFT (4:3)	18.5" TFT (16:9)	19" TFT (4:3)	21.5" TFT (16:9)
Backlight	LED					
Resolution	1024 x 768		1280 x 1024	1366 x 768	1280 x 1024	1920 x 1080
Colors	16.2 M		16.7 M			
Luminance (cd/m2)	500	400	350	300	250	300
Contrast Ratio	700:1		1000:1			3000:1
Viewing Angle (H°/V°)	160/160		140/170	170/160		178/178
MTBF (hrs)	50,000					
Touch Screen	5-wire resistive					
Dimension (W x H x D, mm)	354.9 x 264.7 x 99	400.9 x 303.7 x 93	453.5 x 352 x 89.7	521.7 x 317.6 x 95	487 x 376.8 x 93.9	581.3 x 337.2 x 93.6
Weight (KG)	7.5	9	13	13.5		
Processor	Intel® Bay Trail Celeron® Processor J1900 2.0 GHz, up to 2.42 GHz, QC, 10W					
Memory	1 x 204-pin DDR3L SO-DIMM, up to 8 GB					
Display	1 x VGA					
I/O Port	1 x Realtek® RTL8111G GbE GLAN					
	1 x Mic-in, 1 x Line-out					
	4 x USB 2.0					
	1 x RS232, 0V/5V/12V 1 x RS-232, w/o power					
Expansion Slot	1 x Full-size (w/ mSATA)					
Storage	1 x SATA 2.0 for 2.5" HDD/SSD					
Power Supply	DC-in 12V					
Operation Temperature	0 ~ 45°C					
Storage Humidity	10 ~ 90%, non-condensing					
Mount	VESA 75x75mm(12.1"), VESA 100x100mm(15"~21.5") Panel mount / Clip mount					
OS Support	Windows 7 (32/64-bit) Windows 8.1 (32/64-bit) Windows 10 (64-bit)					
Optional	External Antenna x 1 or 2 Waterproof Sponge 3rd RS232 w/o power (15"~21.5") 2nd GbE LAN X1, 2nd Memory Slot X 1					



Industrial Control



Automation



Catering Industry



Food Processing