

# **Notebook Software Application Manual**

V3.1

## ❖ Copyright Notice

The material in this document is the intellectual property of MICRO-STAR INTERNATIONAL. We take every care in the preparation of this document, but no guarantee is given as to the correctness of its contents. Our products are under continual improvement and we reserve the right to make changes without notice.

## ❖ Trademarks

- All trademarks are the property of their respective owners.
- SRS Premium Sound, SRS and the symbol are trademarks of SRS Labs, Inc.
- THX and THX TruStudio Pro are trademarks of THX Ltd. which may be registered in some jurisdictions. All rights reserved.

## ❖ Technical Support

If a problem arises with your system and no solution can be obtained from the user's manual, please contact your place of purchase or local distributor. Alternatively, you may contact our technical staff for further guidance at: <http://support.msi.com/>

## ❖ Revision History

Version	Revision History	Date
3.1	Latest Released	04, 2015

## ❖ About This Manual

This Software Application Manual provides instructions and illustrations on installing and using the software applications which are exclusively designed by MSI. This manual will give users more on how your notebook can be more efficient, convenient, and enjoyable with the help of these software applications.

The software applications selected here may be optionally supported for particular models. Contact the local dealer for further information if necessary.

### **Dragon Gaming Center (DGC)** (for Gaming Series only)..... **6**

Dragon Gaming Center (DGC) is a handy application for integration of games installed and gaming software interface. Providing easy access to real-time system performance monitor and gaming environment setting, DGC empowers users to facilitate tweaking process without occupying system resources.

### **XSplit Gamecaster** (for Gaming Series only)..... **16**

XSplit Gamecaster is a one-of-a-kind live streaming and recording application designed for both casual and hardcore gamers. It allows every gamer to live stream or record their gameplay without complicated setup and configuration.

### **SteelSeries Engine 2 (SSE 2)** (for Gaming Series only) ..... **30**

SteelSeries Engine 2 is the Apps to combine all frequent functions for gamers in order to easily customize every individual key and functions to personalize every gamer's play style, including KLM, multiple devices management (for example, headset, mouse, and keyboard), keypress macros, and text macros.

### **SteelSeries Engine 3 (SSE 3)** (for selected Gaming Series only) ..... **45**

SteelSeries Engine 3 allows user to have full control over keyboard bindings and to customize the color, effects, and levels of illumination on your notebook.

The new software suite also offers cross platform support for all SteelSeries products and features a cloud syncing system to make sure you always have your profiles wherever you are. SteelSeries Engine 3 is only available in selected Gaming Series only.

### **Nahimic Audio Enhancer** (for selected models only) ..... **61**

Nahimic audio enhancer is designed to give users the best audio experience, offering various audio effects and automatic recording function.

**True Color** (for selected models only) ..... **69**

True Color allows users to select the best color setting for the content being viewed. It characterizes and controls laptop panels for precise image presentation. When the application is launched, the display automatically changes to the assigned color setting.

**Shortcut Manager** (for Workstation Series only)..... **81**

Shortcut Manager, exclusively designed by MSI, is a software application for users to define and manage the personally and frequently used keyboard hot keys. With the hot keys set in Shortcut Manager, users will be able to get a smooth and efficient experience in operating this notebook.

**Keyboard LED Manager (KLM)** (for Workstation Series only) ..... **96**

For the gaming notebook equipped with colorful keyboard LEDs, users control the color variation of the LEDs underneath the keyboard by using the Keyboard LED Manager (KLM) application. These colorful keyboard LEDs are designed to give users more visual entertainment while using the gaming notebook.

**Sizing Options** (for selected models only)..... **106**

This application helps to adjust the system DPI setting conveniently. Only with the resolution (2880 x 1620) can provide the respective image including 100%, 125%, 150% (the best option), 175% and 200% DPI.

**Battery Calibration** ..... **111**

This application helps to extend the life cycle of the battery. It automatically refreshes the battery capacity through efficient processes of charging, discharging and recharging the battery.

**System Control Manager (SCM)**..... **115**

System Control Manager (SCM) is a proprietary software for driving and controlling the Fn keys on the keyboard. The SCM is pre-installed with the default OS and will run automatically in background.

**Recovery Image Backup Tool**..... **121**

Recovery Image Backup Tool, the utility designed to backup the recovery image to blank DVD disks, a USB flash disk or ISO files. They can be used to recover the system to manufacturer's default settings when it is needed. Usage of this application on any product with no authorization may be prohibited.



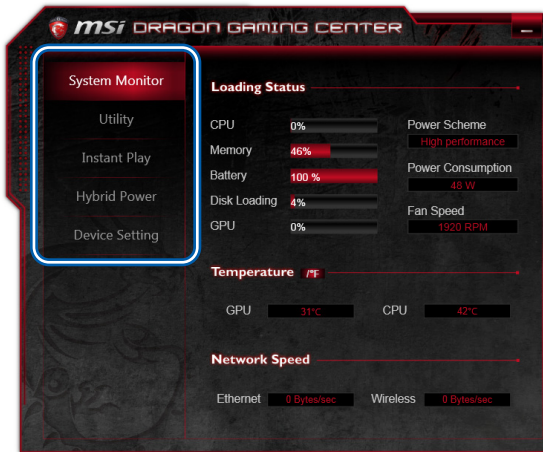
## Note

## ❖ Dragon Gaming Center

When the Dragon Gaming Center application has been installed successfully, its launching icon will appear in the system tray. Click on this icon to launch.



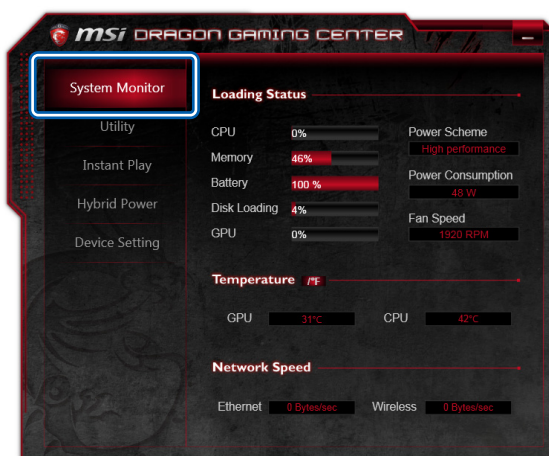
### Main Window



1. **System Monitor:** This item shows current system loading information.
2. **Utility:** Default has included some pre-installed software shortcuts.
3. **Instant Play:** This item includes settings regarding gaming mode environment.
4. **Hybrid Power:** This item indicates whether Hybrid Power status is ON or OFF. (optionally supported).
5. **Device Setting:** This tab allows user to adjust or switch on/ off your device settings.

## System Monitor

The field shows real-time readings of major components including CPU/GPU, memory, temperature and network speed.



### Loading Status

This item shows current status of CPU, memory, battery capacities, disk I/O loading, GPU, current power scheme, power consumption while AC power is unplugged, and fan speed.

### Temperature

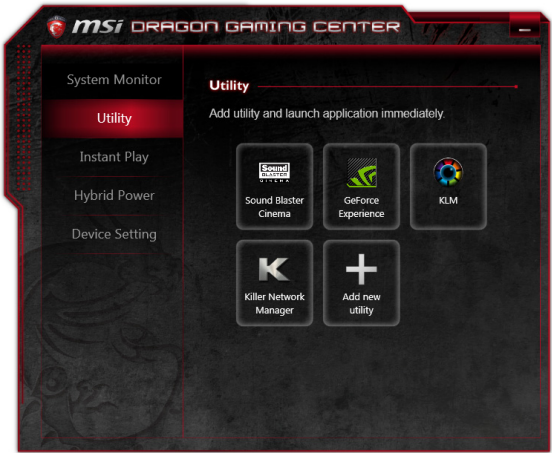
This item shows GPU and CPU temperature. Click on **F** can switch to Fahrenheit degree while click on **C** to Celsius degree.

### Network Speed

This item shows Ethernet and Wireless speed.

Utility

This function integrates a maximum of nine shortcuts of software and utilities embedded in the notebook.



## Instant Play

Instant Play function allows users to define several features in P1 key shortcut or a combination of Fn + F4 key. One can designate an immediate startup for one specified game, set the key as a quick switch to ECO Gaming mode and adjust hardware configuration.



### Instant Play

#### **Play Key Setting**

Select to set one game for instant play. Press a combination of Fn + F4 key or a P1 key (if available), or click the game icon to enter game mode and launch the game immediately.

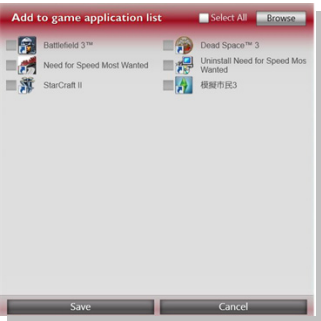
#### **Disable Windows Key**

With the **Disable Windows Key** field checked, Windows Key will be disabled when user enters the game mode.

Note: This setting will also be applied to the Window Key setting in Device Setting tab. That is to say, after selecting Disable Windows Key box here, the setting of Windows Key in Device Setting tab will be overridden even if the key is enabled (Windows Key indicates yellow).

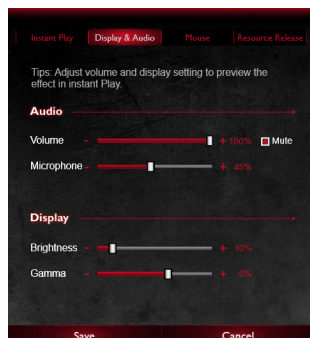
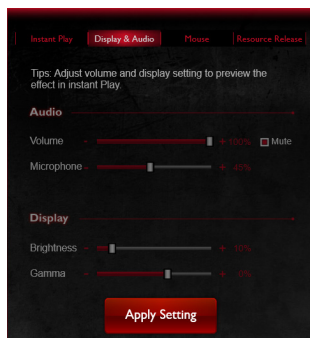
**Game List**

This tab gives you an easy and quick management of installed game database. Users can add shortcuts of your computer games by clicking "Add" in Game List.



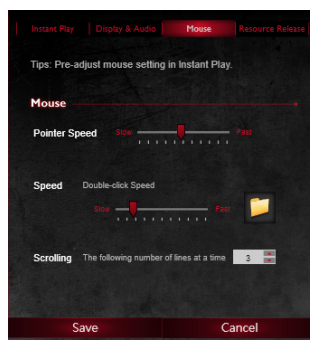
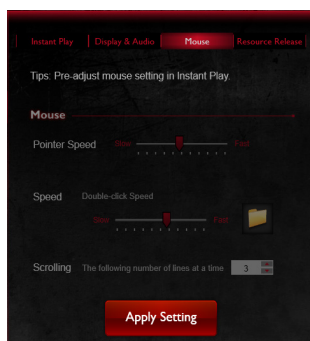
## Display & Audio

Click on **Apply Setting** to switch to game mode where Display and Audio adjustments will be available in game mode from Instant Play.



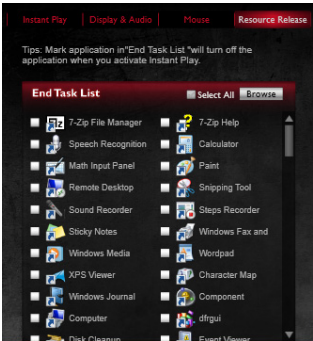
## Mouse

Click on **Apply Setting** to switch to game mode where Mouse adjustments will be available in game mode from Instant Play.



**Resource Release**

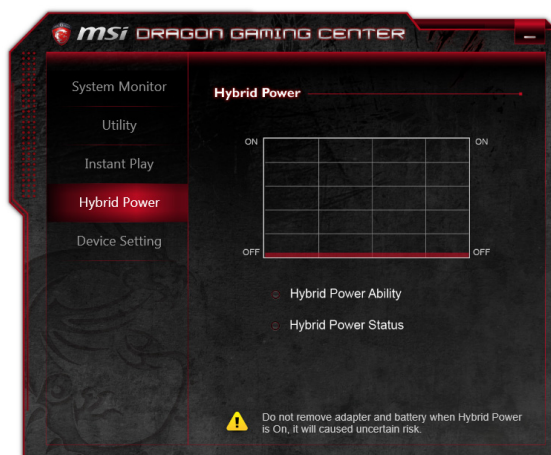
This item allows users check to remove unnecessary programs in End Task List for optimal gaming performance.





## Hybrid Power (optionally supported)

This function empowers users to monitor current Hybrid Power status.



### Hybrid Power Status Chart

This item indicates the duration of the Hybrid Power mode the system has entered in the last 60 seconds.

### Hybrid Power Ability

Hybrid Power shows current status of Hybrid Power mode and the function is only available in selected models. The selection will not be displayed in the following conditions: the model purchased does not support Hybrid Power, an unplugged AC power or a battery capacity that is lower than 30%.

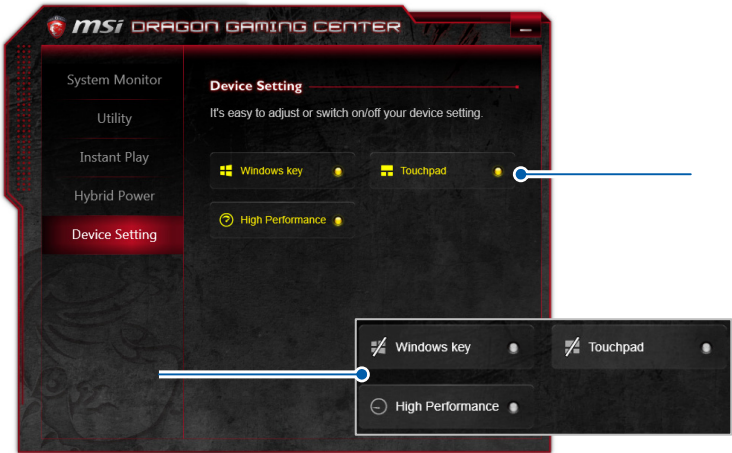
### Hybrid Power Status

This item indicates whether Hybrid Power status is ON or OFF.

**Note:** Hybrid Power is only available in selected models.

## Device Setting

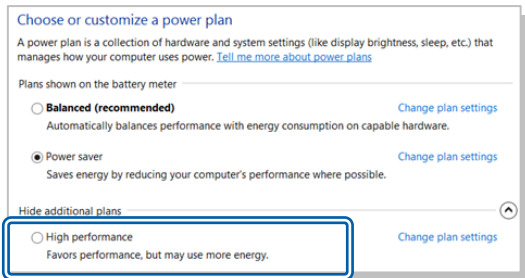
This tab allows user to adjust or switch on or off your device settings. Yellow indicates the selected feature enabled and white disabled.



**Windows key**: Enable or disable the Windows Key.

**Touchpad**: Enable or disable Touchpad.

**High Performance**: Enable or disable High Performance power plan.





## ❖ XSplit Gamecaster (XGC)

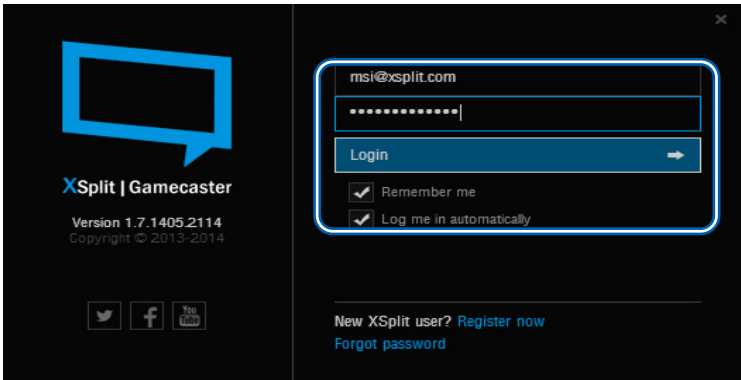
Registering an account only takes a minute and lets us keep you up-to-date with the latest releases and development news, as well as storing your personal settings in the cloud for easy access on multiple devices.

When the XSplit Gamecaster application has been installed successfully, its launch icon will appear in the system tray. Click on this icon to launch.



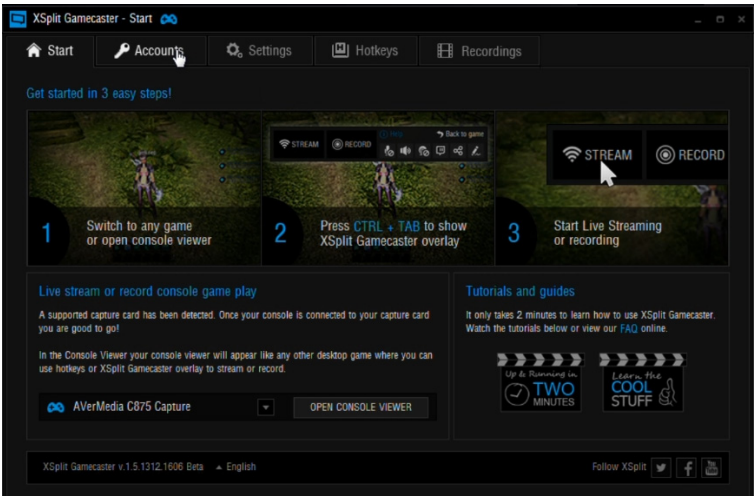
### Sign In

Use your XSplit Broadcaster account to log in if you have one, if you don't have an account yet, go to XSplit.com to register one.



# Live Streaming and Recording

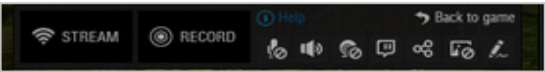
Below is the default tab of XSplit Gamecaster which tells you how to start Live Streaming or recording in 3 easy steps.



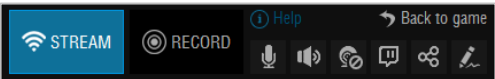
1. Switch to any game or open console viewer. When XSplit Gamecaster loads into your game, you will see a notification that tells you what hot key is set to open the overlay. The default hot key combination to show the XSplit Gamecaster overlay is CTRL + TAB.



2. Press CTRL + TAB to show XSplit Gamecaster overlay.

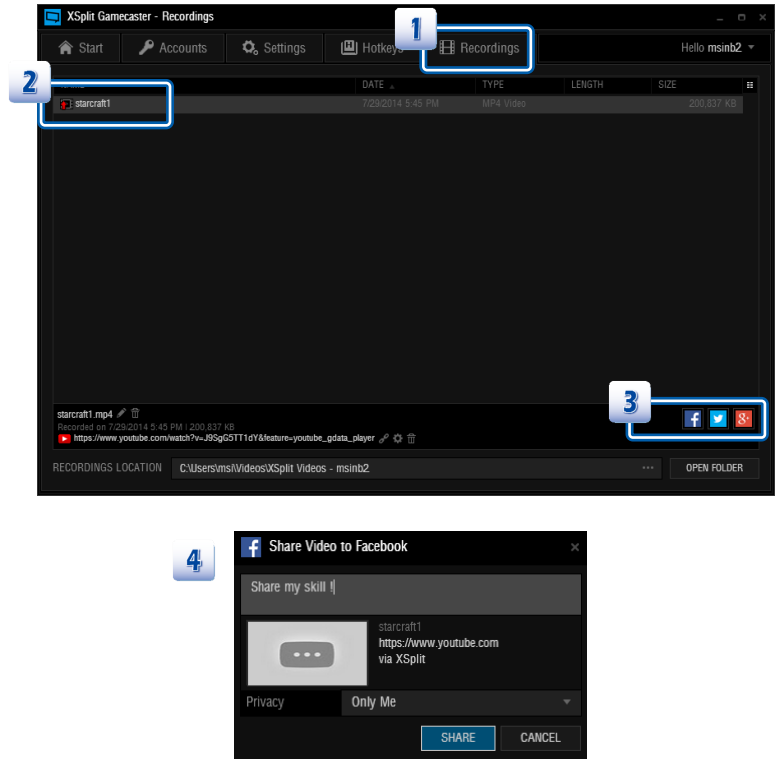


3. Click **Stream** to Live Streaming or click Record to start recording.



## Share Your Recordings

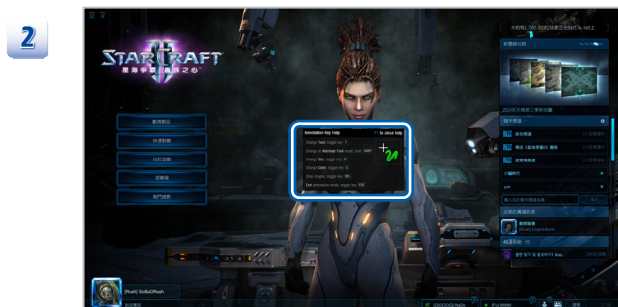
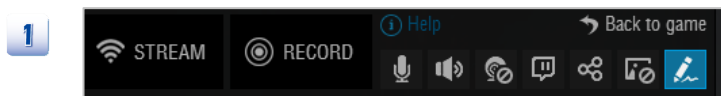
1. Simply go to the **Recordings** tab.
2. Find the video that you wish to share.
3. Select the platform you wish to upload. The video must be uploaded to YouTube in order to share on your social networks. If you have not set up a YouTube account, follow a wizard to guide you through the process.
4. Once the video has been uploaded to YouTube, you can select the service that you wish to post the link. Follow the on-screen instructions to guide you through the uploading and sharing process. Click **Share** to post the link to Facebook.



## Annotation

The built-in annotation feature enables you to draw and highlight selected parts of the gameplay.

1. Hit **CTRL + TAB** to open your overlay, and select annotation icon in the top bar.
2. Press the F1 key to see the variety of tools available in annotation mode. To exit annotation mode press the ESC key.
3. You can add your commentary through drawings, sketches, and etc.

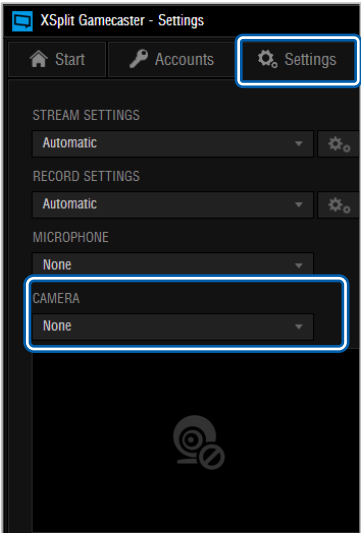


### Add a Webcam

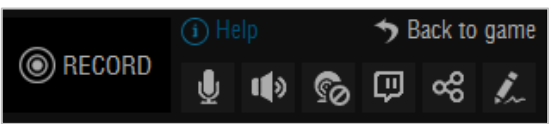
With XSplit Gamecaster, it's easier than ever to add your webcam whether live streaming or recording. Simply bring up the in-game overlay, click the camera button and then position it anywhere. You need to press Fn + F6 to turn the Webcam function on beforehand.

1. Add a webcam is **Settings** Tab. First, make sure you have your desired camera selected in the Settings tab of the XSplit Gamecaster window.
2. Toggle your overlay and click on the camera icon to enable or disable your camera.
3. You can choose to have your camera shown only in your recording or stream, or you can also pin it so you can see it in your game.

1



2



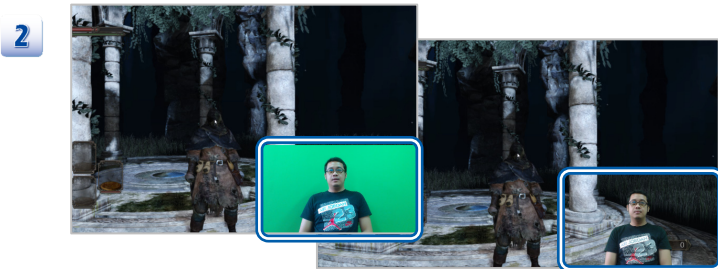
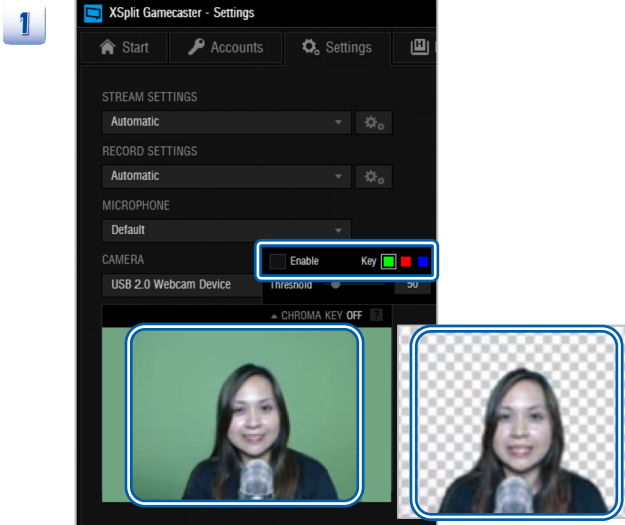


## Use Chroma Key

You can also activate Chroma Key and make your broadcast look even more immersive using a green screen transparency effect.

Chroma keying allows you to take advantage of a chroma-compatible backdrop such as a green screen to immerse yourself within the game play footage. Red, blue, and green are the available colors for keying and you can adjust the threshold of the chroma key via the provided slider.

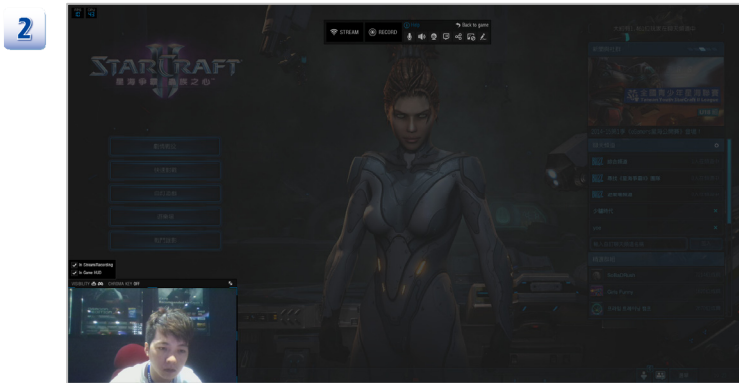
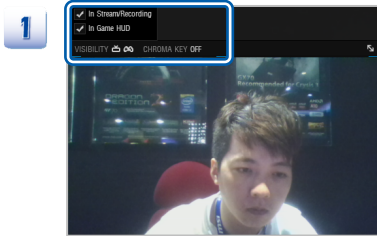
1. Locate CHROMA KEY in the Settings Tab, click it to enable.
2. Shows your game face in the game play footage.



## In Game HUD

Set your camera to be visible to your screen viewer in-game to your viewer.

1. Go to where your camera's position in the overlay, check the In Game HUD to **ON**.
2. There you go, the screen shows in game HUD visibility to see the chat in game.



# In-game Overlay Introduction



Add a drawing to your stream or recording.



Share your live stream on your social networking sites.



Open Twitch panel to chat and edit broadcast title.  
Chat via twitch Chat button allows you to make a Twitch chat.



Enable Camera.



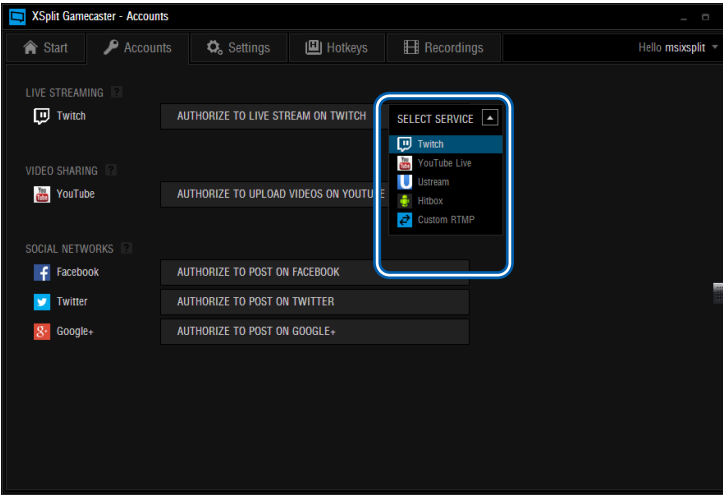
Adjust the volume.



And turn on or turn off your microphone.

## Accounts

The Accounts tab give you access to live streaming, video sharing and social networks. Do it all from a simple user-interface that works directly inside your favorite video game.



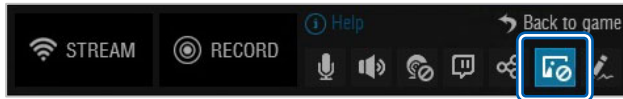
## Image Overlay

Customize your game by adding an image overlay. Use it to add your clan logo, your social media links or even a full screen game overlay. First, you need to update to the latest version of XSplit Gamecaster v. 1.7. The feature will not be available in old versions of XSplit Gamecaster. Look on the Start tab of XSplit Gamecaster and you will be prompted if you are not on the latest version.

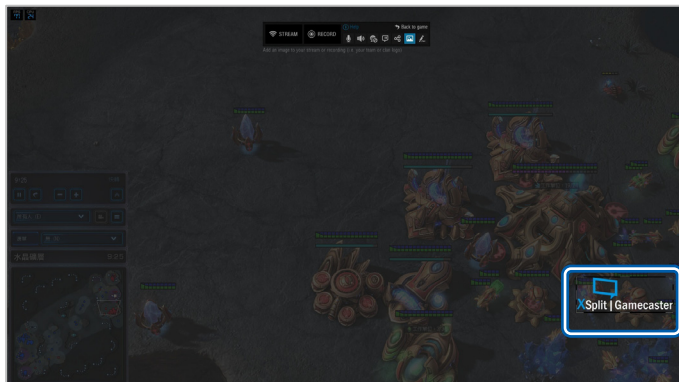
### Change the image overlay

1. Launch your PC game (or open the console viewer) and open the XSplit Gamecaster overlay. Click the icon to activate Image Overlay.
2. Once activated, your image will initially be the XSplit Gamecaster logo.
3. To change and adjust the image, just hover over the image with your mouse to see the image toolbar. Click the icon to change the image.
4. Then a window will open for you to choose your preferred image overlay. When you've selected your graphic, click on the REPLACE IMAGE button or double-click on your selected image

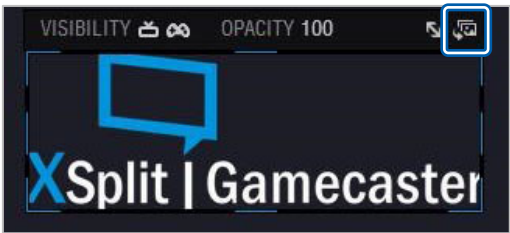
1



2



3



4



**Adjust the image overlay**

When clicking on your chosen image, you can re-position the image by dragging it or resize the image by dragging the image outline.

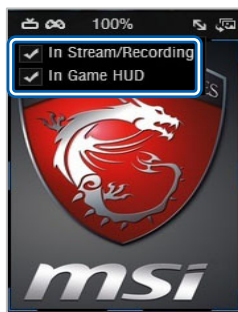


## The Image Overlay Toolbar

When you click on your chosen image, an outline will appear with various highlighted sections that you can use to resize the image. You can re-position the image by dragging the image.

### Visibility

The first option toggles visibility modes for the image. You can choose whether to show the image to your viewers and/or yourself.



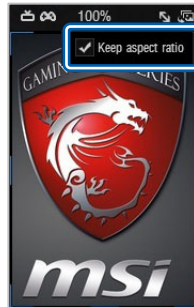
### Opacity

Set the opacity of Image Overlay. This controls the transparency of the image. A value of 100% means no transparency.



**Aspect Ratio Lock**

The third option (the arrow) toggles image aspect ratio lock on/off. It is usually suggested to keep this "on".





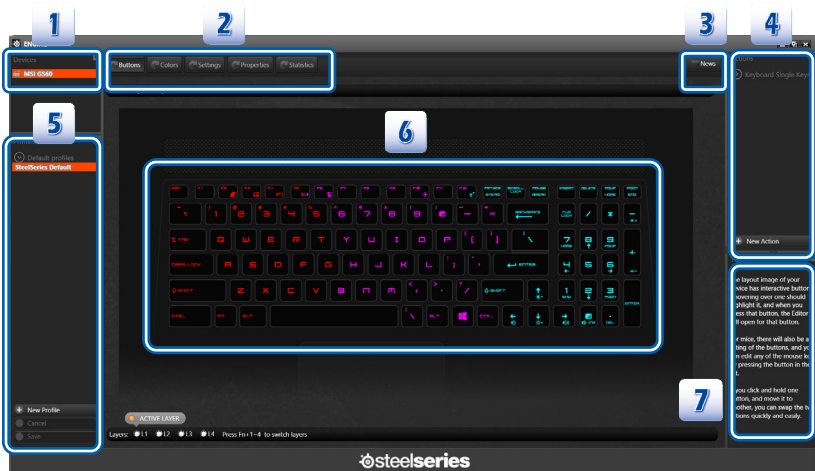


## ❖ SteelSeries Engine 2 (SSE 2)

When the SteelSeries Engine 2 application has been installed successfully, its launch icon will appear in the system tray. Click on this icon to launch.



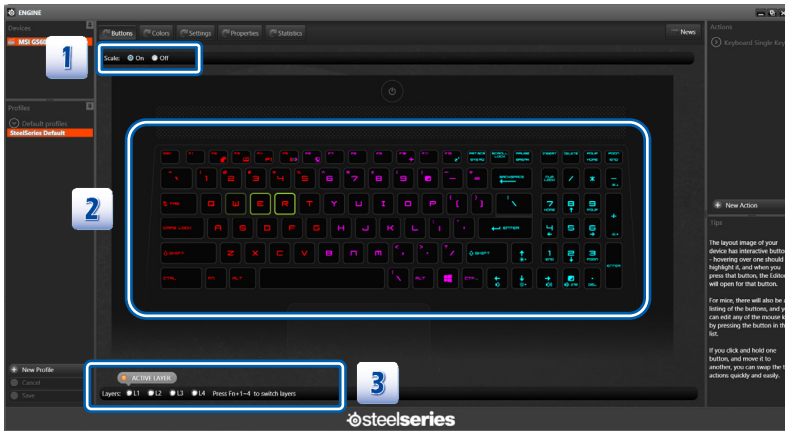
### Main Window



1. **Device Name:** Shows model name of your notebook.
2. **Function Pages:** Select major functions from Buttons, Colors, Settings, Properties, and Statistics tabs.
3. **News:** Click to link to SteelSeries news webpage.
4. **Actions:** Select to edit a keyboard macro and drag it to left keyboard layout to replace it.
5. **Profiles:** Click on the profile name and edit Series Default and custom profiles created by the user.
6. **Keyboard Layout:** Shows the keyboard of a corresponding model.
7. **Tips:** Shows a description when the mouse pointer is over the area.

## Buttons

This tab allows user to assign custom actions to any programmable button, and to see a layout of the laptop with a brief overview of the assignment. After installing the SteelSeries Engine 2, you will need to right click on the icon in the taskbar and open it.



### 1. Scale

Here you can choose to scale the keyboard on this screen. On to scale keyboard to the size of your screen or Off to the size of original pixel size.

### 2. Keyboard Layout

Keyboard Layout will show the keyboard of a corresponding model. Hotkeys illuminating green frame with mouse cursor movement indicates user defined hotkeys. Just right-click on a key, a gamer can easily customize every individual key as hot key to personalize his/her own play style, greatly increase the convenience on key usage.

Note: Fn, F1 to F12 keys has been excluded to hotkeys to reduce the possibility of accidentally striking.

### 3. Active Layer and Layers Setting

The SteelSeries Engine MSI gaming laptops incorporated supports four keyboard layers for gamers to set four usage scenarios. Press Fn+1 to 4 to switch layers.

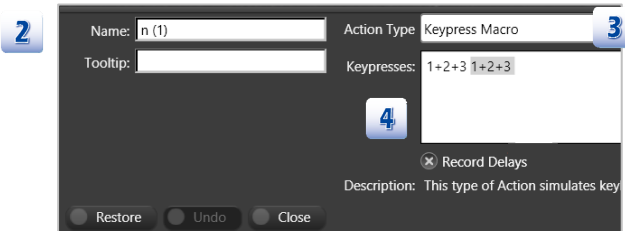
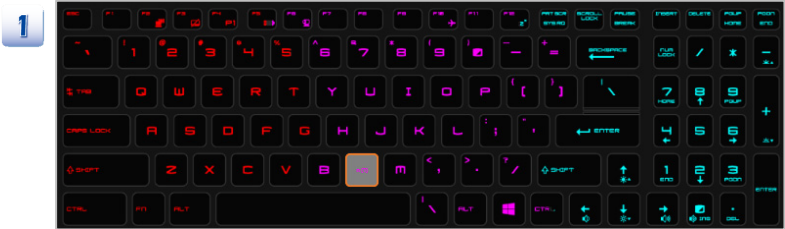
## ■ Action Type

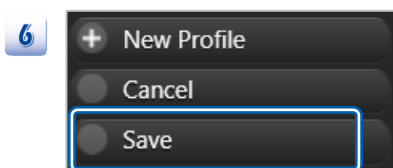
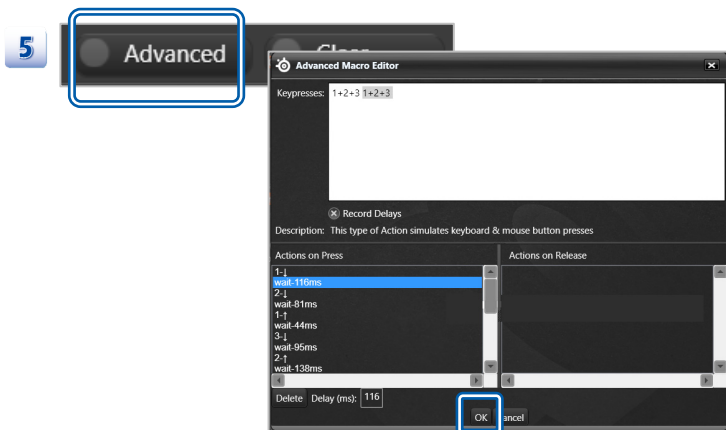
SteelSeries 2 application allows you to choose between four types of actions for a key - Keypress Macro, Text Macro, Launch Application and Disable Key.

### Keypress Macro

The Keypress Macro type simulates mouse and keyboard inputs at a kernel level.

1. Designate a hotkey from keyboard layout.
2. Name the hotkey in **Name** field.
3. Select **Keypress Macro** in Action Type dropdown menu.
4. Enter **Keypresses** and click **Record Delays** to record delay between signals.
5. For advanced tweaks, click **Advanced**, and then follow the on-screen instructions to Advanced Macro Editor window where you can fine-tune the signal delay times.
6. Click **Save** in bottom left corner in the main screen.

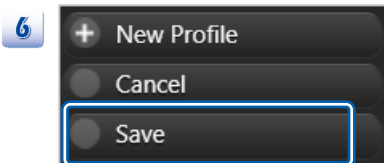
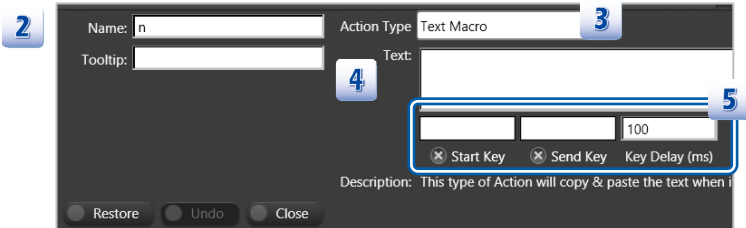
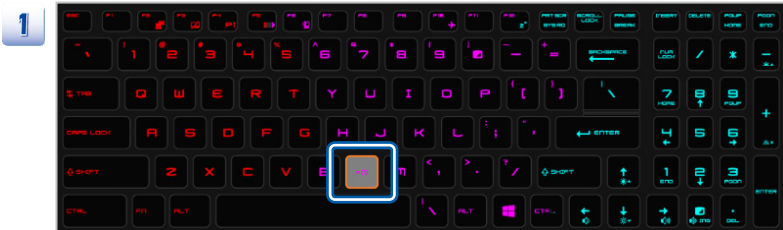




### Text Macro

The "Text Macro" type is used to copies and pastes the specified text.

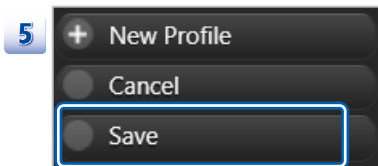
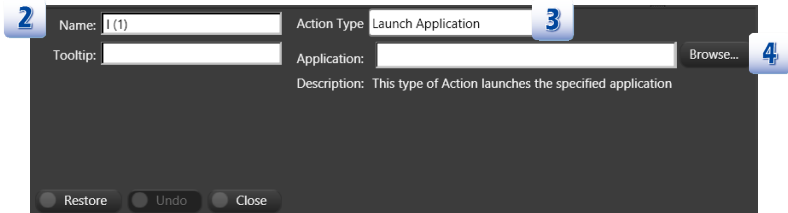
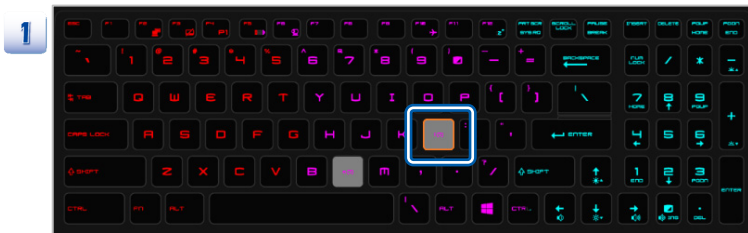
1. Designate a hotkey from keyboard layout.
2. Name the hotkey in **Name** field.
3. Select **Text Macro** in Action Type dropdown menu.
4. Enter strings in **Text** field. Multilingual strings supported.
5. Set hotkeys for **Start Key** and **Send Key** as text macro ready, you will be able to start key→strings→send in one keystroke. A macro that spams multiple keys with one keypress.
6. Click **Save** in bottom left corner in the main screen.



### Launch Application

The "Launch Application" type launches the designated game or other application.

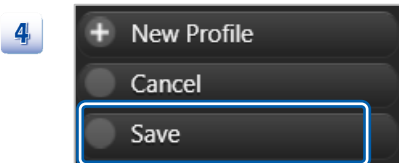
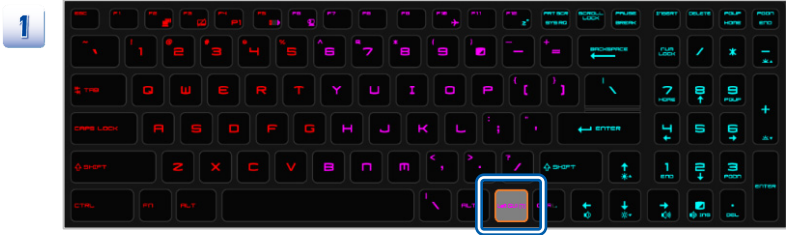
1. Designate a hotkey from keyboard layout.
2. Name the hotkey in **Name** field.
3. Select **Launch Application** in Action Type dropdown menu.
4. In Application field, select the specific application by clicking **Browse**.
5. Click **Save** in bottom left corner in the main screen.



### Disable Key

Disable Key ensures that nothing happens when the button is pressed. Finally there's the Macro Editor that can disable the keyboard when needed, among other tasks.

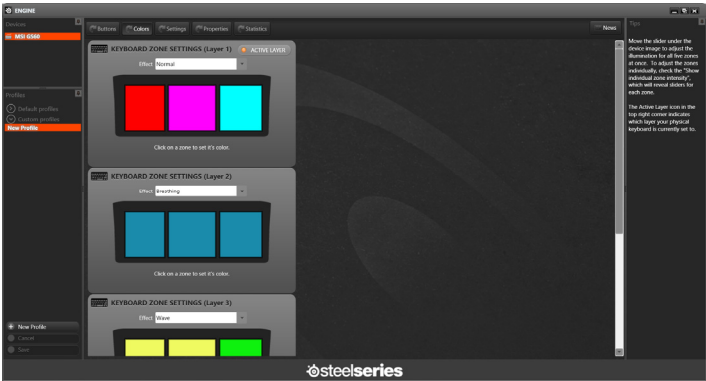
1. Designate a hotkey from keyboard layout.
2. Name the hotkey in **Name** field.
3. Select **Disable Key** in Action Type dropdown menu.
4. Click **Save** in bottom left corner in the main screen.





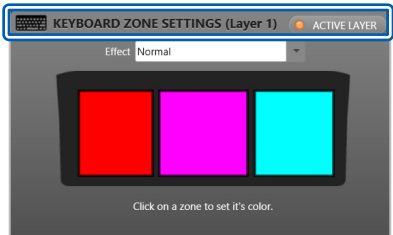
# Color

By clicking on the Colors tab, users can fully customize the keyboard illumination from the individual and group color settings to the intensity of the illumination.



## Active Layer

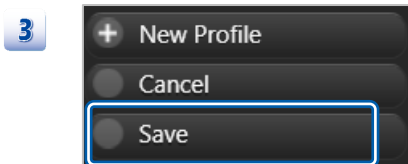
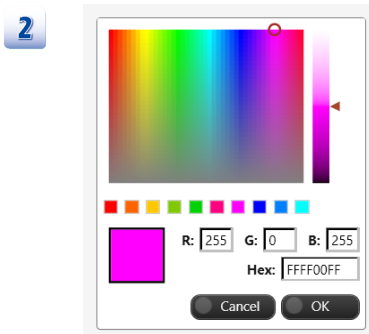
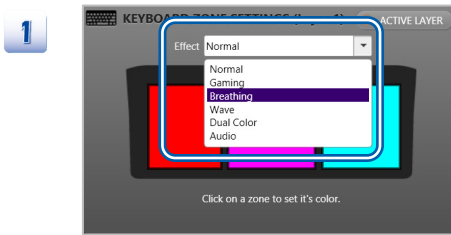
This part shows current layer of backlit keyboard.



**Effect**

User can choose backlight modes, six usage scenarios available.

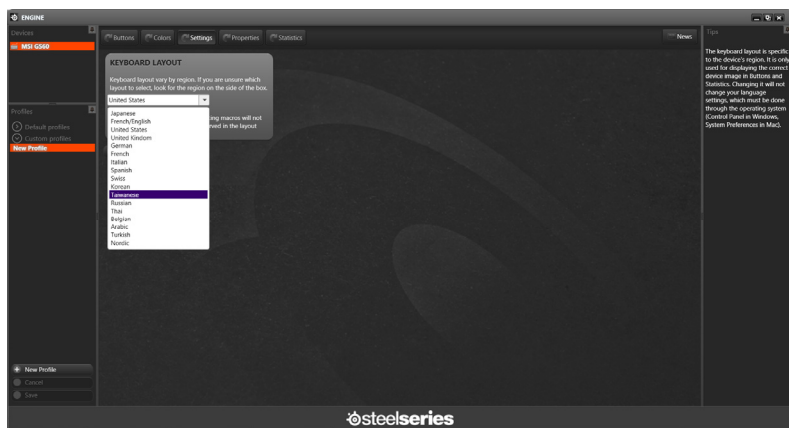
1. Select desired effects in the list.
2. Set backlight LED color by clicking on a color zone, and color setting windows will pop up. Then follow the on-screen instructions to continue.
3. Click **Save** in bottom left corner in the main screen.



## Settings

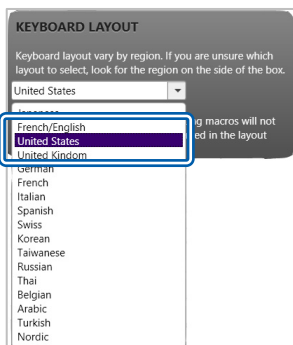
### Select keyboard layout language

You can configure the language of your keyboard layout, 17 languages available.

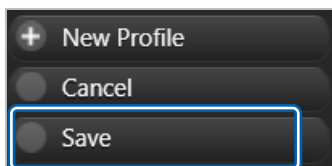


1. Select local language.
2. Click Save in bottom left corner in the main screen.

1

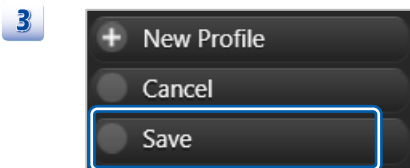
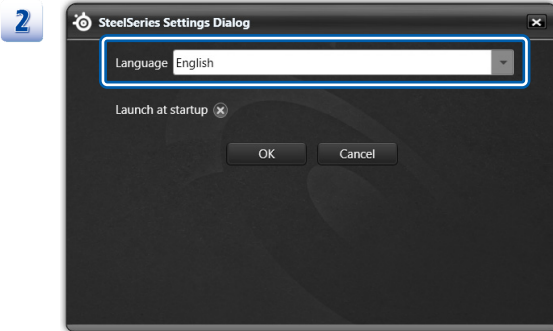
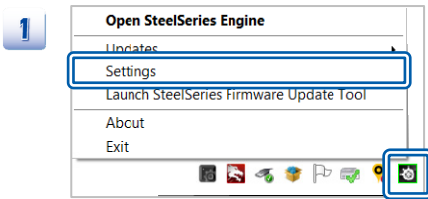


2



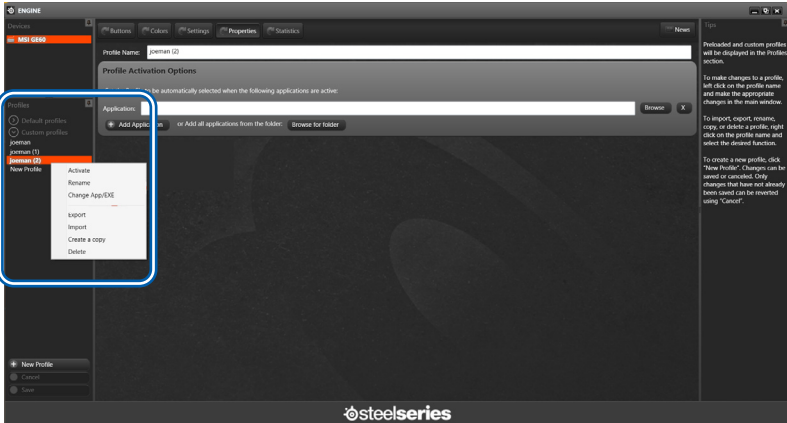
**Select User Interface language**

1. Locate SteelSeries icon on system tray, and right-click **Settings**.
2. Select language in SteelSeries Settings Dialog and Click **OK**.
3. Click **Save** in bottom left corner in the main screen.



## Properties

User can launch specific profile according to corresponding games, for example, use profile 1 for First-Person Shooting games (FPS), and profile 2 for Defense of the Ancients (DotA) games.

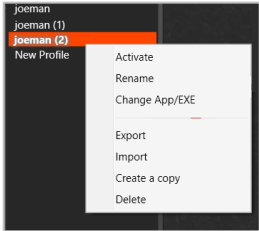


**Profiles**

The left hand side list in the SteelSeries Engine is specifically for Profiles - Default profiles including the SteelSeries Default and custom profiles created by the user.

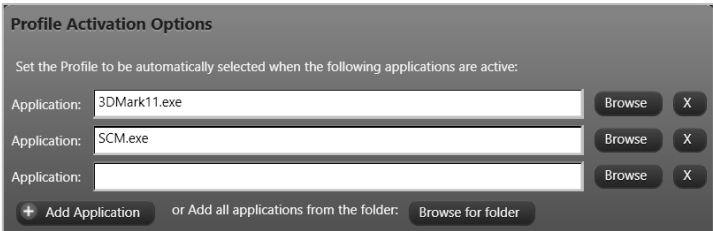
To import, export, rename, copy or delete a profile, right click on the profile name and select the desired function.

Profiles will be applicable to SteelSeries Engine-supported devices or MSI gaming notebooks.



**Profile Activation Options.**

User can set the Profile to be automatically selected when the following applications are active.



## Statistics

Use the Statistics module to record your keyboard or mouse actions. You can then use this information to fine tune your macros as well as your key and mouse button assignments to optimize your tools to play and work.

Statistics tab highlights the most frequently used keys. This solution also runs monitoring tests during any game or application, and enables users to calculate their Actions Per Minute (APM) to improve gaming efficiency and customize key locations.



1. Click **Start** to start key presses record.
2. Keyboard layout shows with both color and numbers the frequency of your key or button presses. Then review the peripheral heat map, which shows with both color and numbers the frequency of your key or button presses.
3. Time field shows duration of the record.
4. Click **Save** in bottom left corner in the main screen.





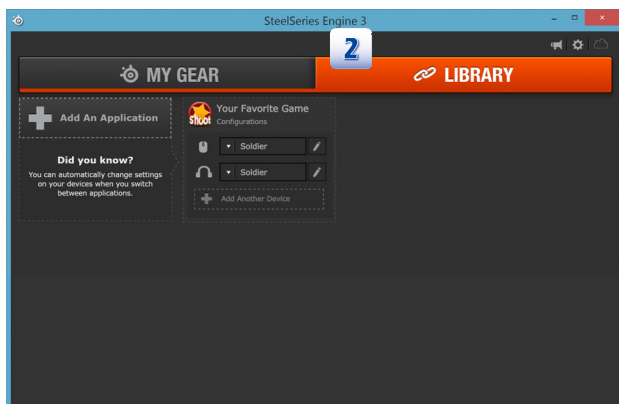
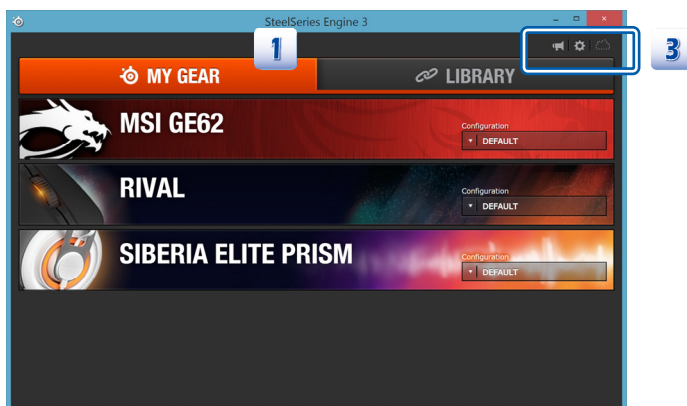
## ❖ SteelSeries Engine 3 (SSE 3)

When the SteelSeries Engine 3 application has been installed successfully, SteelSeries logo will appear in the system tray. Click on the icon to access the launch SteelSeries Engine 3.

SteelSeries Engine 3 is only available in selected Gaming Series only.



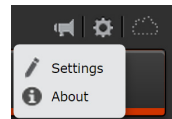
### Main Window



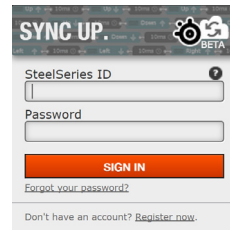
1. **MY GEAR:** The **MY GEAR** tab lists recognized SteelSeries devices which can be clicked to access advanced settings.
2. **LIBRARY:** The **LIBRARY** tab shows what programs trigger a configuration for each device.
3. **Icons:** from left to right, Update, Setting, Cloud.

- Update: SteelSeries Engine 3 notifies you of updates for both Engine software and firmware for your devices.

- Setting: Select a language in Settings and Learn more about current software and firmware in "About".

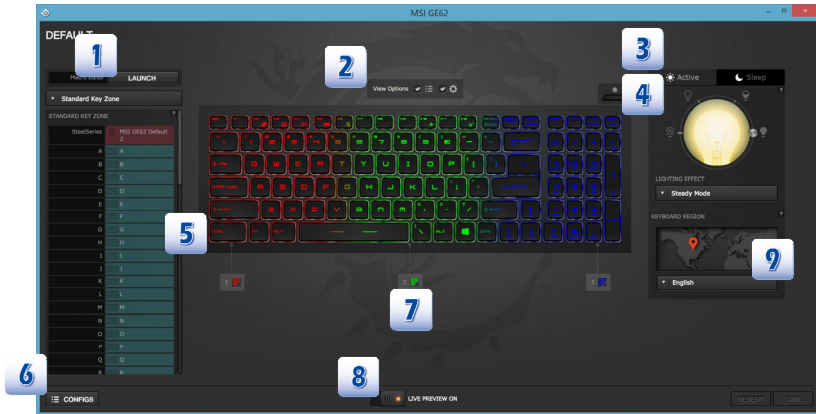


- Cloud: Users now have the ability to backup, share, and sync your configuration profiles through the SteelSeries CloudSync across all your platforms. Simply log in with your SteelSeries ID and all your configurations will be available wherever you are.



## MY GEAR

Images shown here are for reference only, and may be different from the actual models users purchased.



1. **Macro Editor:** Click "LAUNCH" to bring Macro Editor.
2. **View Options:** View options allow you to show or to hide Key Zone 1, Brightness and Layouts.
3. **Active/Sleep Lighting Effect:** User can edit backlight modules when in Active and in Sleep mode. This function is only available on GE62/GE72.
4. **Brightness:** Customize the color, effects, and levels of illumination on your notebook.
5. **Key Zone:** Click Key Zone 1 or 2 to call keyboard editor.
6. **Configs:** You can also open a configuration window on the left, where you can access, create and edit your various profiles.
7. **Color:** User can edit RGB color. This function is only available on GE62/GE72.
8. **Preview:** Live preview allows user to check edited backlight settings immediately.

## ■ Macro Editor

Clicking the **Launch** button brings up the Macro screen. Macros can be recorded with a fixed 15ms delay or in real-time. Once recorded the Macro (and its delays) can be edited and saved.

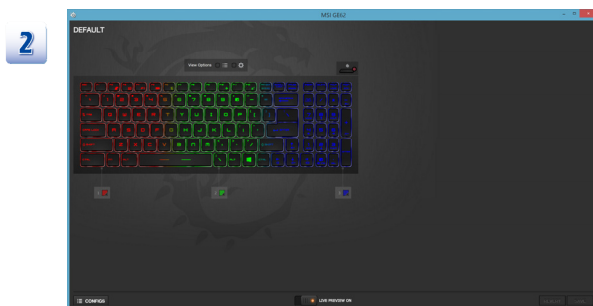
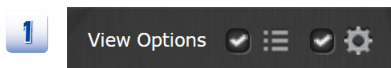
1. Click **Start** to record your Macros (both Mouse and Keyboard is supported).
2. Click **Stop** to check the recorded Macro.
3. Set Delay Option (As Recorded, Fixed Delay, or No Delay) to your preference. Select **Save** to finish.
4. A simple click of the **Manage** button allows you to create, edit or delete all of the Macros that you may well have amassed.



## ■ View Options

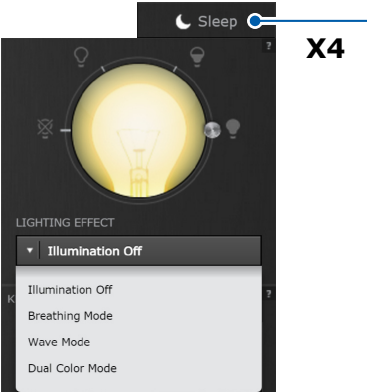
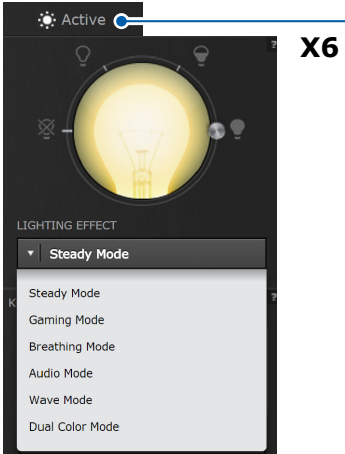
View options allow you to show or to hide Key Zone 1, Brightness and Layouts. Uncheck left to hide Key Zone 1 and right to Brightness and Layouts.

1. Default is both checked as below.
2. You can uncheck both when needed.



■ **Active/Sleep Lighting Effect**

Here are total seven backlight combinations selectable from Active and Sleep tab. This function is NOT available on GT80.



1. **Steady Mode:** Light up and remain steady.



2. **Gaming Mode:** Only the LEDs on the left remain enabled.

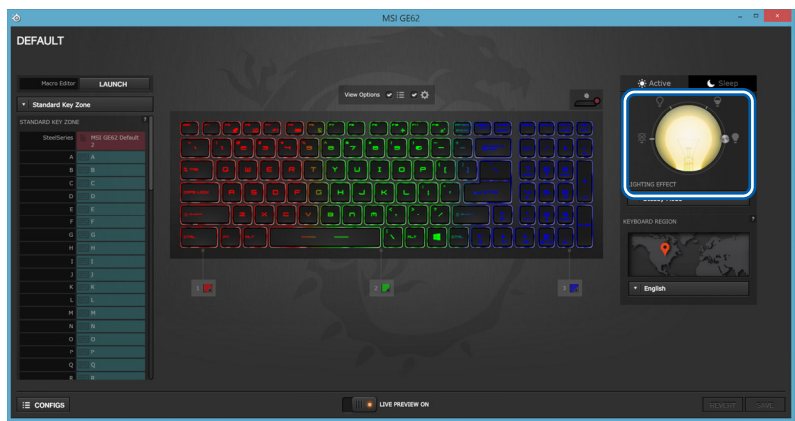


3. **Breathing Mode:** The alternating bright and dim appearance of the selected color creates a pulsating breathing effect.
4. **Audio Mode:** Lights with sound outputted by the laptop and enables different colors of keyboard lighting in accordance to the sound being played. Turn on the audio setting and crank the volume to 30%+.
5. **Wave Mode:** The LEDs alternate between the selected color and darkness in a gradation which flows from right to left.
6. **Dual Color Mode:** The whole keyboard LEDs alternate between two selected colors.
7. **Illumination Off:** No backlight.



■ **Brightness**

Here are four level of brightness.





## ■ Key Zone

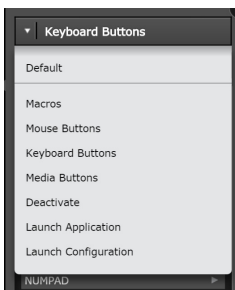
Buttons assign custom actions to any programmable button and provides an image layout of your device with a brief overview of the assignment

### Button Assignment

1. Click to **Key Zone 1** or **Key Zone 2** to bring up keyboard editor.

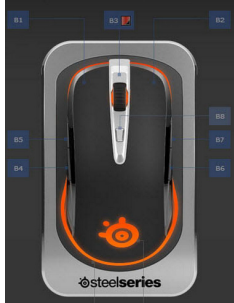


2. All keys except the Fn key can be reprogrammed in Keyboard Buttons. Here you can assign custom actions to any of the eight programmable buttons, including Macros, Key-presses and Media functions.



- **Default:** Act as a default keyboard function
- **Breathing Mode:** The alternating bright and dim appearance of the selected color

- **Marcos:** Call an already edited macro.
- **Mouse Buttons:** Simulate mouse event. Click to find 8 programmable buttons (B1 to B8) as figure below.



- **Keyboard Buttons:** Simulate keyboard input.
  - **Media Buttons:** Simulate media buttons.
  - **Deactivate:** You can disable the keyboard when needed.
  - **Launch Application:** Launch applications quickly.
  - **Launch Configuration:** Switch Configuration.
- Note: Macros, Mouse Buttons and Keyboard Buttons support looping function.

### Looping function definition

#### 1. Play Once

- Every **press** can send signal once only.
- Delay time is **not** adjustable.
- Frequency of signal **output** is not adjustable.
- Signals can be triggered by pressing or releasing.

#### 2. Play N times

- Pressing the key once can send signal N times.
- Delay time between signals can be adjusted.
- Frequency of signal output is adjustable.
- Signals can be triggered by pressing or releasing.

#### 3. Repeat While Pressed

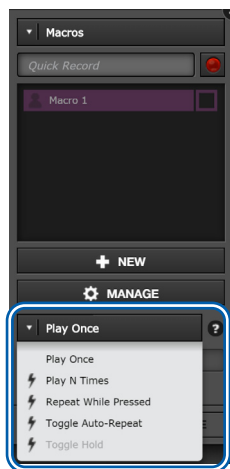
- Hold the key pressing can send signals repeatedly.
- Delay time between signals can be adjusted.
- Frequency of signal output is not adjustable.
- Signals can be triggered by pressing or releasing.
- Signals cannot be triggered by pressing or releasing.

#### 4. Toggle Auto Repeat

- Send signals repeatedly after pressed the button.
- Press again to stop sending signals.
- Delay time between signals can be adjusted.
- Frequency of signal output is not adjustable.
- Signals can be triggered by pressing or releasing.

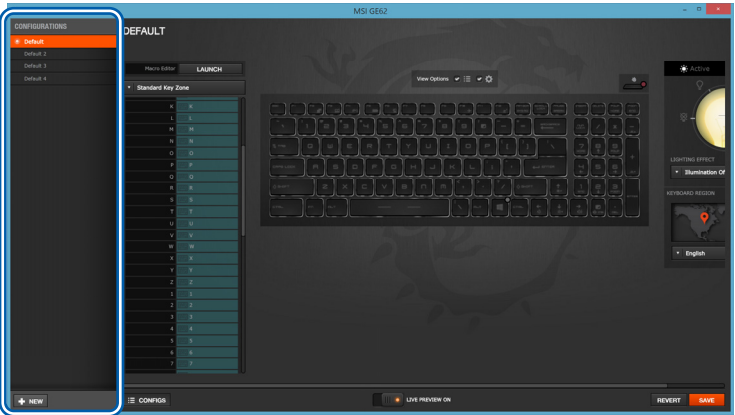
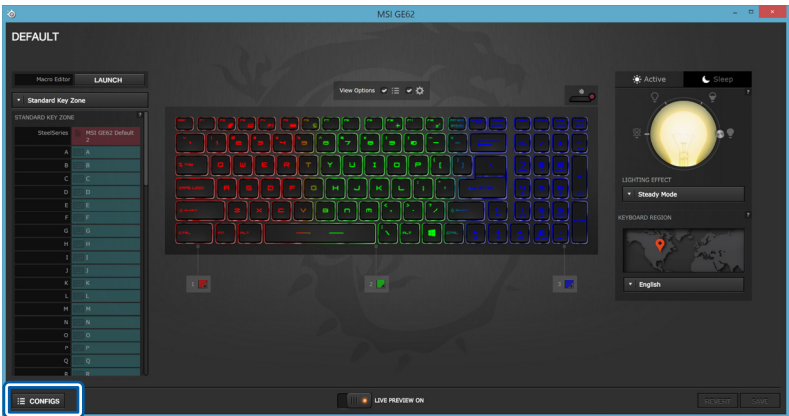
#### 5. Toggle Hold

- Send signals repeatedly after pressed the button.
- Press any key to stop sending signals.
- Delay time between signals cannot be adjusted.
- Frequency of signal output is not adjustable.
- Signals can be triggered by pressing or releasing.



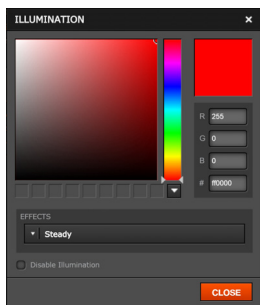
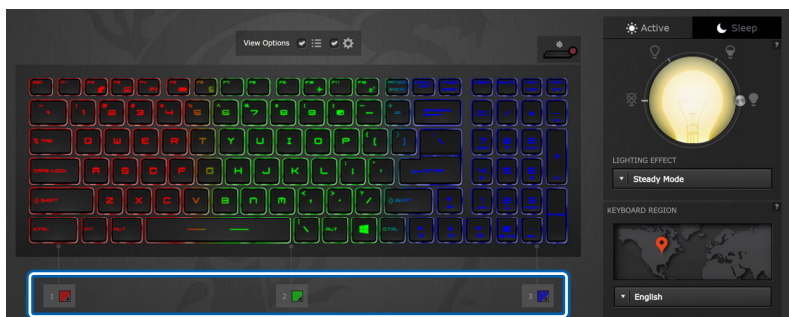
■ **Configs**

You can also open a configuration window on the left, where you can access, create and edit your various profiles.



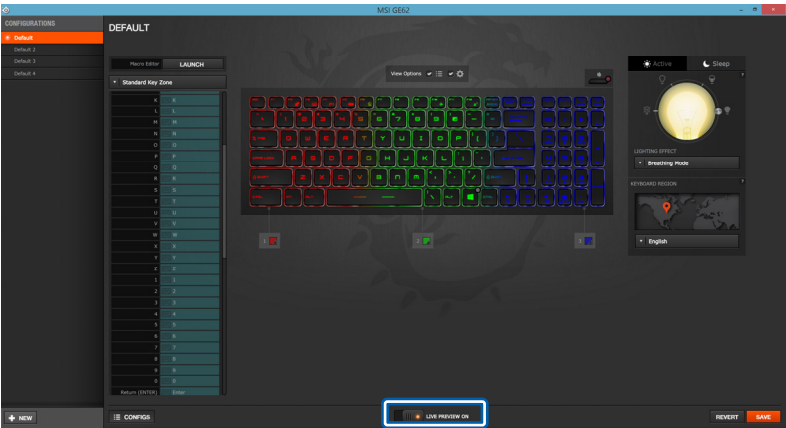
## ■ Colors

With SteelSeries 3, user can edit RGB color in the software. Just one click on the color zone,. Users can enter color code or choose the color directly. This function is NOT available on GT80.



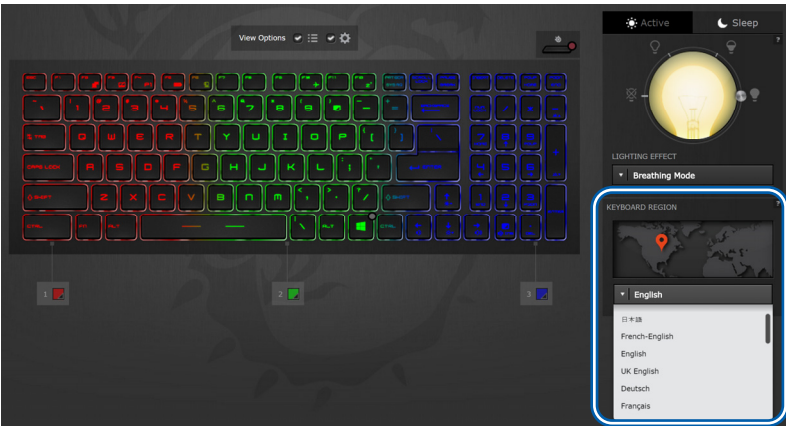
■ Preview

Live preview allows you to check edited backlight combinations real-time. The default live preview is set to on.



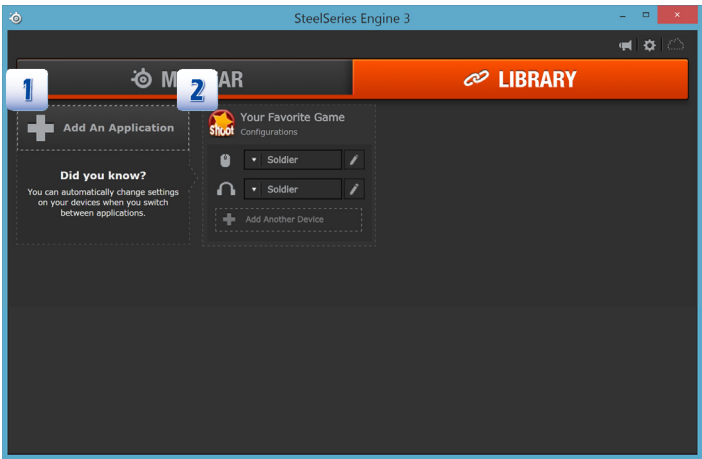
■ Layouts

Here you can choose your keyboard region.

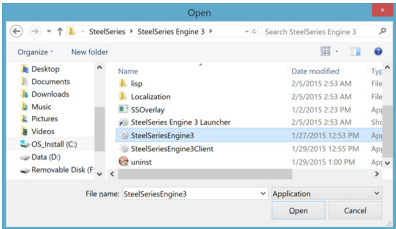


# LIBRARY

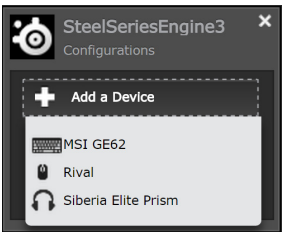
The **LIBRARY** tab shows what programs trigger a configuration for each device.



1. **Add An Application:** Open an application.



2. **Add a Device:** Select a device you wish to bind to the application.



## Note



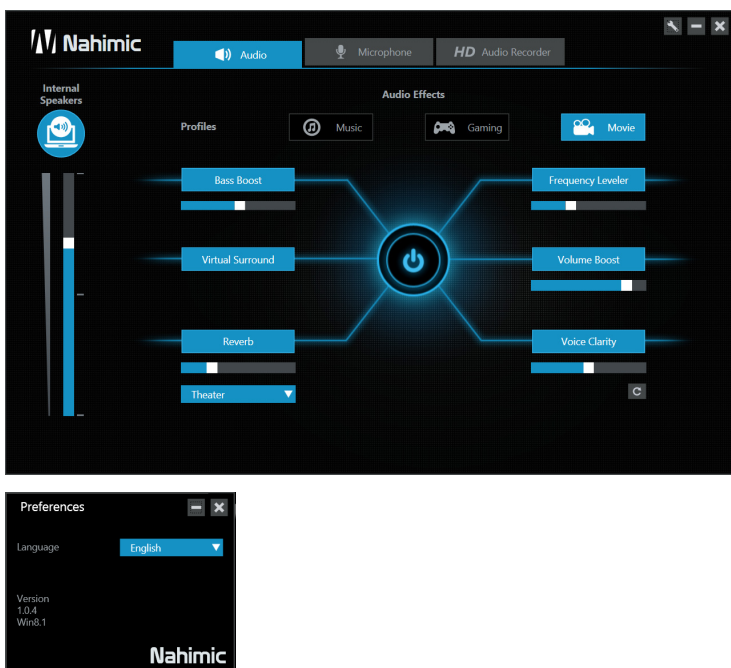
## ❖ Nahimic Audio Enhancer

Nahimic audio enhancer is designed to give users the best audio experience, offering various audio effects and automatic recording function. Find the Nahimic launching icon on the desktop or the system tray in the lower right-hand corner of screen. Click on this icon to launch the Nahimic application.

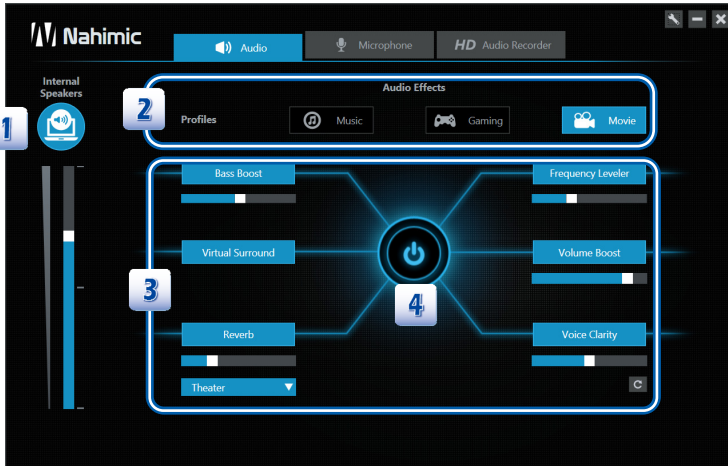


### Main Window

Nahimic's UI is composed of a main window with 3 tabs, which are Audio, Microphone and HD Audio Recorder, and a Preferences window.



## Audio



1. Displays the type of audio rendering device currently being used as output, as well as its current volume. This section can display the volume of the internal (built-in) speakers, headphones and external speakers.
2. Allows users to adjust the 6 audio effects applying to the current listening experience. The preset Music profile applies for any kind of mono or stereo music. The Gaming profile applies for any kind of stereo or multichannel video game. The Movie profile applies for any kind of stereo or multichannel video content.

3. Users are also allowed to manually adjust the 6 audio effects to meet the individual needs: Bass Boost, Virtual Surround, Reverb, Frequency Leveler, Volume Boost and Voice Clarity.

**Bass Boost:** Increases the energy in low frequencies up to +12 dB on a frequency range optimized for the audio rendering device in use.

**Virtual Surround:**

- Gaming and Movies

Virtualizes the multichannel audio stream from the game engine or the movie soundtrack and downmixes it in order to retrieve a multichannel listening experience over your stereo headphones or speakers.

- Music

Expands the stereo for a wider sound stage.

**Reverb:** Increases the feeling of space by applying different types of reverbs corresponding to different room sizes. The reverb effect can be pushed up from +0 up to +6 dB (0 to 100%).

**Frequency Leveler:** Levels the energy of sub-bass, bass, medium and treble to a given threshold in order to maintain a constant level of each type of frequency. The frequency leveler rate can be adjusted from 0 to 100%.

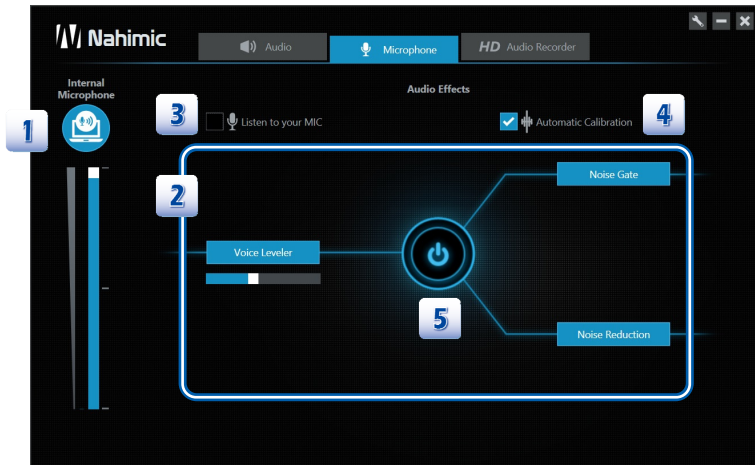
**Volume Boost:** Controls extra gain up to +6 dB. This audio effect is designed to be used for abnormally low audio contents.

**Voice Clarity:** Boosts the speech in movies, video games and incoming communication from +0 up to +12 dB (0 to 100%).

**Reset:** Restores the current profile to its default values.

4. **Power button** allows user to switch all Nahimic's effects on and off in one click.

## Microphone



1. Displays the type of audio recording device currently being used as output, as well as its current volume. This section can display the volume of the internal (built-in) microphone and external microphone.
2. Allows users to adjust the 3 audio effects: Voice Leveler, Noise Gate and Noise Reduction.

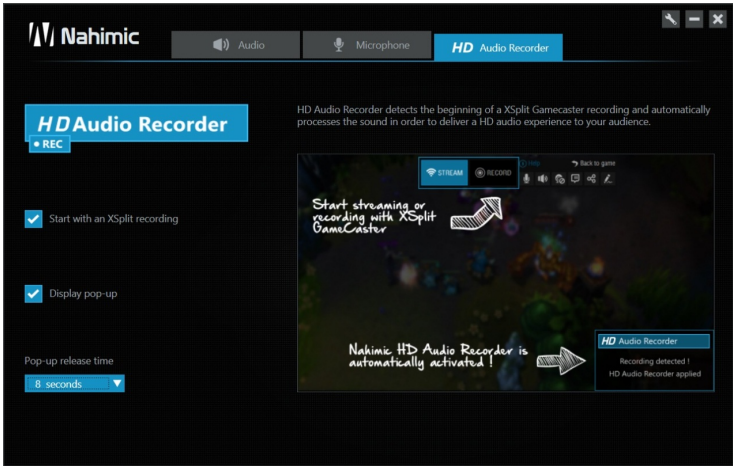
**Voice Leveler:** Levels the volume of your voice in order to avoid any saturation and maintains a constant and clear communication. Voice Leveler can be adjusted with a 0 to 100% slider.

**Noise Gate:** Removes the background and the digital noise between segments of speech during your voice communication. The Noise Gate can be adjusted to a threshold (dB). The Noise Gate threshold needs to be adjusted in accordance with the type of microphone in use.

**Noise Reduction:** The Noise Reduction removes the remaining sound that the Noise Gate has left on top of your words and sentences. The noise reduction level can be adjusted with a 0 to 100% slider.

3. **Listen to your MIC:** Turns the microphone loopback On/Off.
4. **Automatic calibration:** Dynamically adjusts the Noise Gate threshold and the Noise Reduction level by estimating the noise VS. signal rate.
5. **Power button** allows user to switch all Nahimic's effects on and off in one click.

## HD Audio Recorder



### ■ Supported Software

XSplit Gamecaster is currently the only software supported by HD Audio Recorder.

### ■ Automatic launch

HD Audio Recorder will be, by default, automatically launched when a XSplit Gamecaster recording session is detected. The launch of the HD Audio Recorder enables HD audio processing over an XSplit Gamecaster recording without any adjustment. Simply uncheck the "Start with an XSplit recording" option in the HD Audio Recorder tab to disable the HD Audio Recorder.

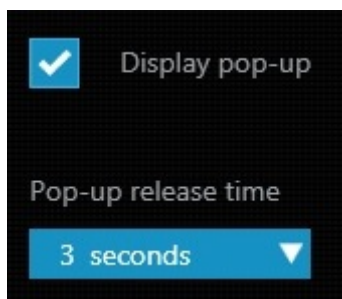
### ■ Pop-up display

When an XSplit Gamecaster recording session is detected and the HD Audio Recorder is launched, a pop-up message will be displayed to indicate that the process is running.



■ **Display pop-up settings**

1. Release time of the pop-up display: 3, 5, 8 seconds.
2. Check or uncheck to enable or disable the pop-up display.
3. Note that disabling the pop-up display won't prevent the HD Audio Recorder from running.



## Note



# ❖ True Color

True Color allows a user to select the best color setting for the content being viewed. It characterizes and controls laptop panels for precise image presentation. When the application is opened, the display automatically changes to the assigned color setting.

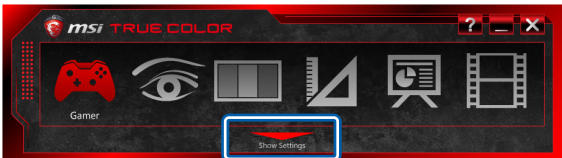
When the True Color application has been installed successfully, its launching icon will appear in the system tray. Click on this icon to launch.



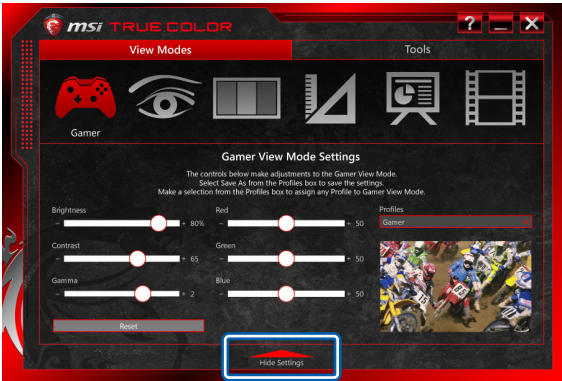
## Basic & Advanced View Modes

There are basic mode and advanced view modes in True Color. Basic view mode provides quick access to six view modes. Advanced view mode allows users to customize the user defined settings and give access to True Color's tools. Click on the triangle at the bottom of the application can switch between basic and advanced view modes in True Color.

### Basic View Mode



### Advanced View Mode



Six View Modes

There are six view modes: Gamer, Anti-Blue, sRGB, Designer, Office and Movie.



For game playing.



For reduce the amount of blue light that is emitted from the display to reduce eye fatigue.



For accurate color when viewing images on the web.



For designer applications.




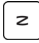

For office and productivity applications.



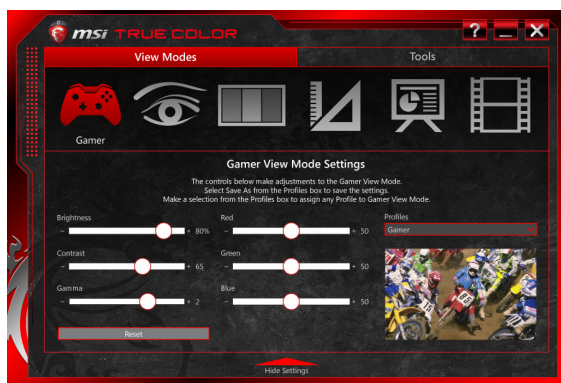
For watching movies.




## Hot Keys (for selected models only)

True Color supports hot keys to launch the application or a control strip with access to View Modes.

 +  : Press and hold the [Fn] key, and then press the [Z] key to launch the True Color application. Or you can use True Color quick launch button  to launch it.

**Note: This True Color quick launch button is for selected models only.**



 +  : Press and hold the [Fn] key, and then press the [A] key to launch the mini View Mode application for quick access to View Modes. Or you can use True Color quick launch button  to launch it.

**Note: This True Color quick launch button is for selected models only.**



## Gamer

Gamer View Mode can customize to best suit the user's game preferences. Gamer View Mode Settings can be saved, exported, or imported to share with other users. Any adjustments will be automatically saved to Gamer View Mode.



### ■ Gamer View Mode Settings

Use the respective slider to adjust their brightness, contrast, gamma, Red, Green and Blue value.

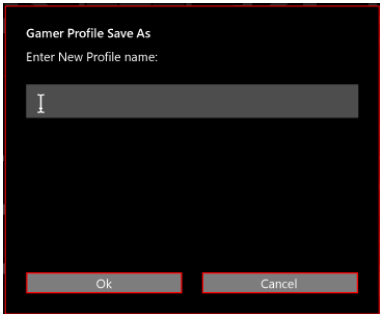
#### Reset

Press this key can reset the value of brightness, contrast, gamma, Red, Green and Blue to the default settings.

#### Profiles

There are 5 options in Gamer profile drop down menu:

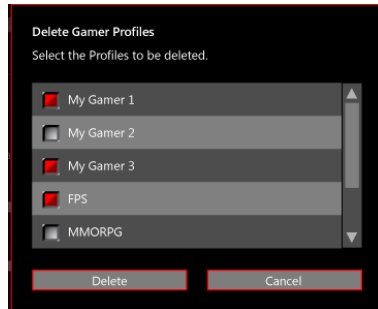
1. **Save As:** Save the current display adjustments and this setting can be applied to the display at any time.



2. **Export:** Select this option to choose which profile to export.



3. **Import:** Select this option will open the "Open" dialog which provides a left list of file names to import. Once imported, the profile name will appear in the drop down menu.
4. **Delete:** Delete the profile from the drop down menu.

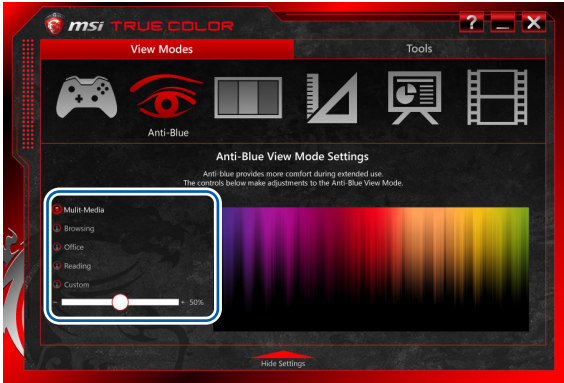


5. **Cancel:** Close the dialog box.

**Note:** User created profiles are only visible in the View Mode where they were created. Gamer profiles are only visible in the Gamer profile drop down menu. Designer profiles are only visible in the Designer profile drop down menu.

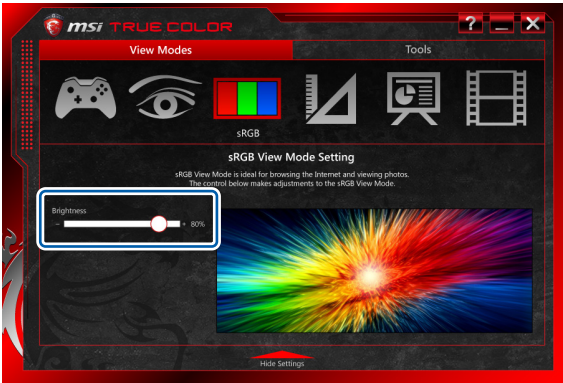
Anti-Blue

Anti-Blue View Mode can reduce the amount of blue light that is emitted from the display and provides more comfort during extended use. Select any of the Anti-Blue View Modes setting will be automatically saved to Anti-Blue. It allows the user to adjust the blue intensity and brightness value in multimedia, browsing, Office or reading mode.



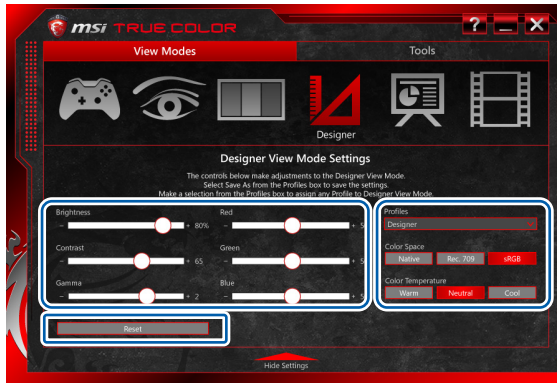
# sRGB

sRGB View Mode can accurate color when view images on the web. It allows the user to adjust the brightness value in sRGB settings, any change will be automatically saved to sRGB View Mode.



## Designer

Designer View Mode can customize to best suit the user's design applications. Designer View Modes can be saved, exported, or imported to share with other users. Any adjustments will be automatically saved to Designer View Mode.



### ■ Gamer View Mode Settings

Use the respective slider to adjust their brightness, contrast, gamma, Red, Green and Blue value.

#### **Reset**

Press this key can reset the value of brightness, contrast, gamma, Red, Green and Blue to the default settings.

#### **Profiles**

There are four options in Designer profile drop down menu:

1. Save As: Save the current display adjustments and this setting can be applied to the display at any time.
2. Import: Select this option will open the "Open" dialog which provides a left list of file names to import. Once imported, the profile name will appear in the drop down menu.
3. Export: Select this option to choose which profile to export.
4. Delete: Delete the profile from the drop down menu.

#### **Color Space**

Select the color space of the display from Native, Rec.709 and sRGB.

#### **Color Temperature**

Select the display's white point from Warm, Neutral and Cool.



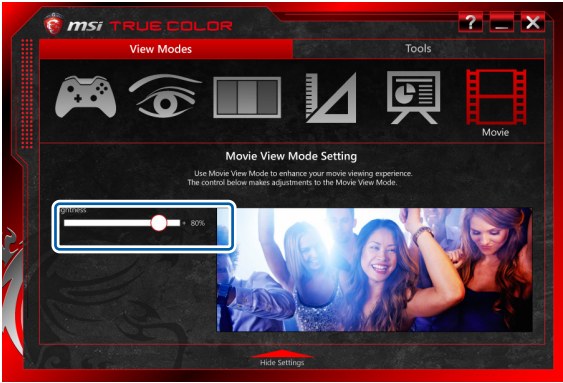
## Office

Office View Mode is designed for productivity applications commonly used in the workplace. It allows the user to adjust the brightness value in Office settings, any change will be automatically saved to Office View Mode.



## Movie

Office View Mode can enhance your movie viewing experience. It allows the user to adjust the brightness value in Movie settings, any change will be automatically saved to Movie View Mode.



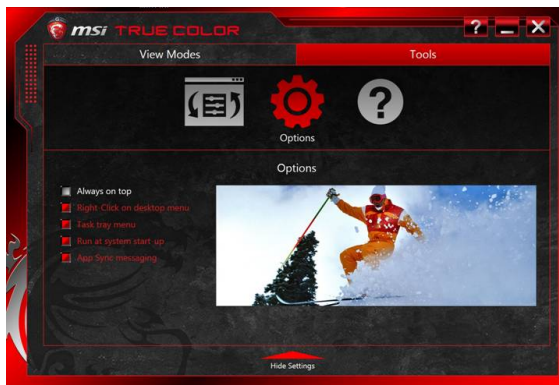
## Tools- App Sync™

There are 3 tools in True Color: App Sync™, Options and Help. You can change the mode/profile of any respective activated application. This list allows the user view different content correctly and easily with the appropriate mode/profile. Press "Refresh", "Browse" or "Delete" key can change the setting of App Sync™.



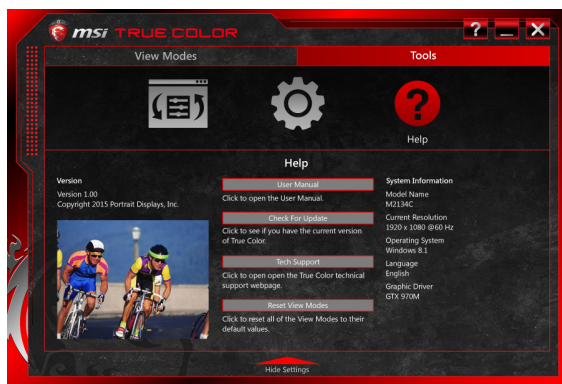
## Options

In the left list of the following menu, options in use will have an "X" in the check box. Move the cursor over the box to check /unchecked can turn on or off the option.



## Help

Provides support information for True Color. Press “User Manual” can open the related user manual of True Color; click “Check for Update” can update the current version to the latest version; press “Tech Support” can open the website of True Color; or press “Reset View Modes” can reset all the View Modes to their default values.



## Note

## ❖ Shortcut Manager

When the Shortcut Manager application has been installed successfully, the Shortcut Manager launching icon will appear under Programs and the system tray in the lower right-hand corner of screen. Click on this icon to launch the Shortcut Manager application.



### Icons and Notifications

#### ■ System Tray Icons



Shortcut Manager Enabled    Shortcut Manager Disabled

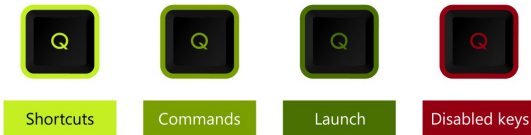
#### ■ On-Screen Notifications



## Main Window



1. **Profile Manager:** To add, delete, import, or export hotkey setting profiles.
2. **Shortcut Enable/ Disable:** To Enable or Disable the selected hotkey profile.
3. **Hotkey Sets:** Setting up the Hotkey Sets here. Each profile has 8 Hotkey Sets. Three shortcut types are available for selecting: Shortcuts, Commands, and Launch.
4. **List of Disabled Keys:** 4 keys on the keyboard can be disabled for each profile.
5. **Keyboard Layout:** Use the keyboard here to set up the Hotkey Set. This area is also used to show the detailed Hotkey settings. The selected hotkeys on the keyboard layout above will be colored with different color which represents different function type: Shortcuts, Commands, Launch, and Disabled Keys.



6. **Language:** Select a supported language from English, French, German, or Japanese in the drop menu.

## Getting Started

Now, follow the step by step instructions below to setup a personal shortcut profile in Shortcut Manager.

### ■ Create a new profile

Create a new profile while using Shortcut Manager.

5. Give a name for the new profile.
6. Click [OK] to continue.



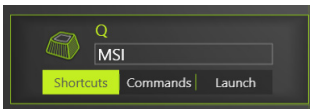
## ■ Define [Shortcuts] Hotkey

This function makes a single hotkey to trigger at most 10 characters instantly.

1. Select a Hotkey Set from 8 Hotkey Sets.



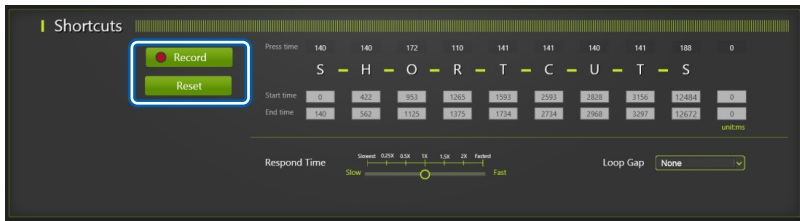
2. Move the mouse cursor to keyboard layout and select a key for this Hotkey Set.  
[Q] on the keyboard is selected as an example.
3. Give a name to this Hotkey Set: [MSI]
4. Select the function of this Hotkey Set: [Shortcuts]



5. To define another Hotkey Set, repeat the steps shown above.

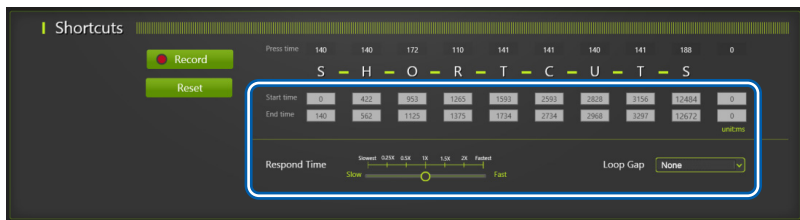


- Click on **[Record]** and then key in at most 10 keyboard strokes, including typewrite keys, numeric keys, cursor keys and function keys.  
Click on **[Stop]** when finish keying in.  
Click on **[Reset]** to clear the characters entered previously.



### Advanced Settings

- Start Time and End Time:** Adjust time length of key stroke.
- Respond Time:** Slide the scroll bar to adjust the hotkey responding rate.
- Loop Gap:** Choose a desired selection from the pull-down menu to make the hotkey execute repeatedly in a selected interval from **1 sec** to **10 sec**. Once the hotkey is triggered with Loop Gap selected, the application will continue executing the instructed hotkey function repeatedly until this hotkey is pressed again.  
When **None** is selected, the hotkey will only be executed once.



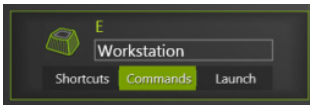
## ■ Define [Commands] Hotkey

This function makes a single hotkey to trigger a set of message content with no limit on the number of words.

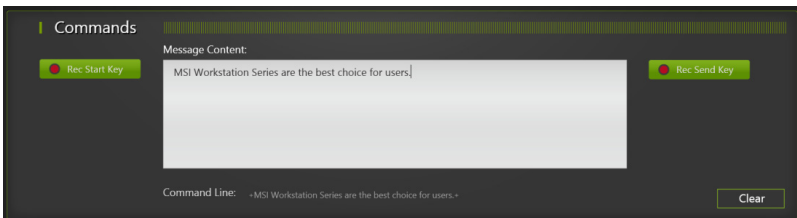
1. Select a Hotkey Set from 8 Hotkey Sets.



2. Move the mouse cursor to keyboard layout and select a key for this Hotkey Set.  
[E] on the keyboard is selected as an example.
3. Give a name to this Hotkey Set: [Workstation]
4. Select the function of this Hotkey Set: [Commands]



5. Enter the command in texts under [Message Content]



6. To define another Hotkey Set, repeat the steps shown above.

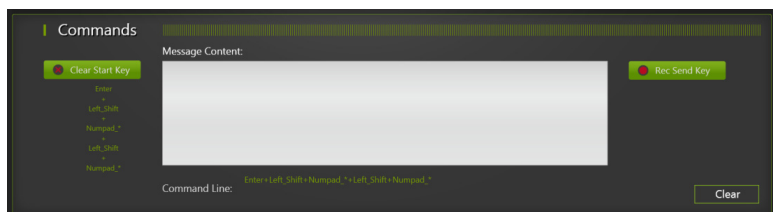
## ■ Define Compound [Commands] Hotkey

A single hotkey will also be capable of triggering a compound command, if required. A compound command is composed with 3 main orders: Start key, Message Content, and Send Key. Maximum 5 movements for Start key and Send key are allowed. No limit on the number of words for Message Content.

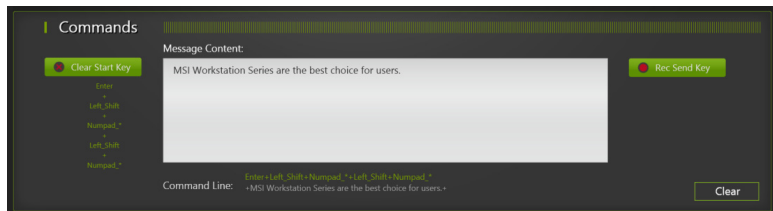
- ♦ **Rec Start Key/ Stop Record/ Clear Start Key:** Make a Start key that comprises any command given by the keyboard, such as SHIFT, CTRL, or ALT, etc..
- ♦ **Message Content:** Give command in texts here.
- ♦ **Rec Send Key/ Stop Record/ Clear Send Key:** Make a Send key that comprises any command given by the keyboard, such as SHIFT, CTRL, or ALT, etc..

Follow the steps below to make a compound command:

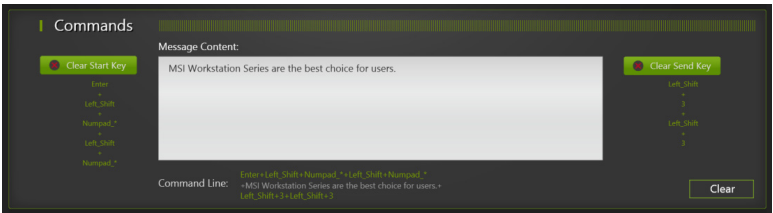
1. Click **[Rec Start Key]**
2. Give commands with the physical keyboard.  
**example: [Enter + Left\_Shift + Numpad\_\* + Left\_Shift + Numpad\_\*]**
3. Click **[Stop Record]**



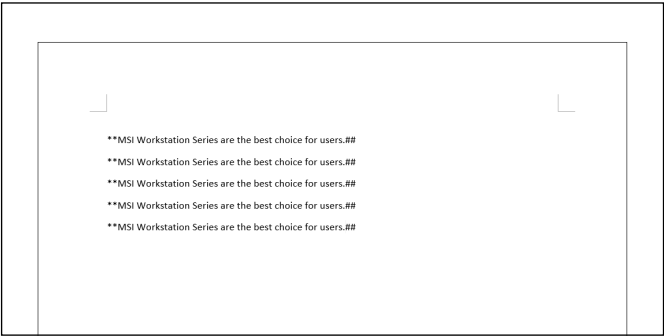
4. Enter the command in texts under **[Message Content]**



- 5. Click **[Rec Send Key]**
- 6. Give commands with the physical keyboard.  
**example: [Left\_Shift + 3 + Left\_Shift + 3]**
- 7. Click **[Stop Record]**



- 8. Click **[Clear Start Key]** or **[Clear Send Key]** to delete commands given previously for Start Key or Send Key, if needed.
- 9. Once this Hotkey Set is enabled, pressing the hotkey of **[E]** on the keyboard, you may see the result shown as below.



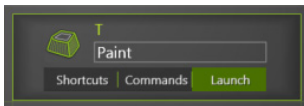
## ■ Define [Launch] Hotkey

This function makes a single hotkey to activate a particular application, tool or file.

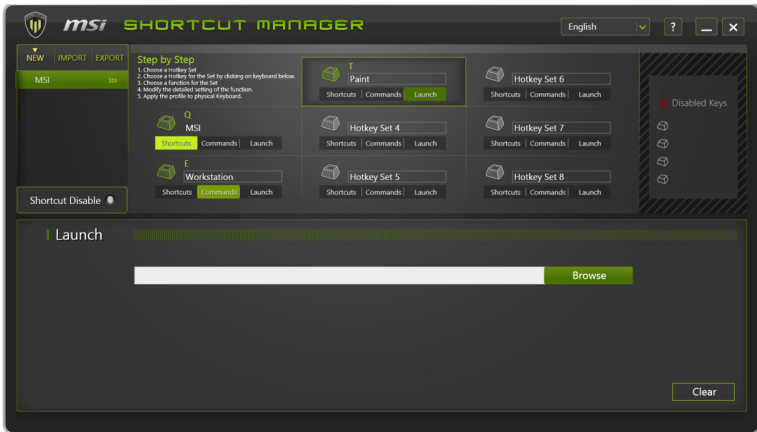
1. Select a Hotkey Set from 8 Hotkey Sets.



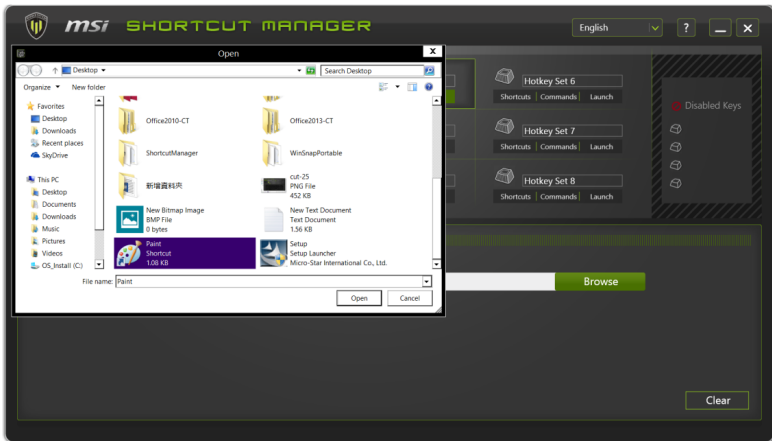
2. Move the mouse cursor to keyboard layout and select a key for this Hotkey Set.  
[T] on the keyboard is selected as an example.
3. Give a name to this Hotkey Set: [Paint]
4. Select the function of this Hotkey Set: [Launch]



5. Click on **[Browse]** to select an application or a file to be launched.



6. The tool of **[Paint]** is set to be activated for Launch hotkey as an example here.



7. To define another Hotkey Set, repeat the steps shown above.

## ■ Setup [Disabled Keys]

Keys on the keyboard may be disabled temporarily if necessary. Setup the Disabled Keys under this section.

1. Click on the **[Disabled Keys]** section.



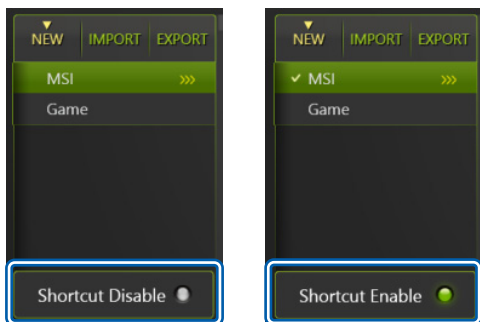
2. Click keys on keyboard layout to select keys to be disabled.
3. Maximum 4 keys can be disabled for each profile.



### ■ Apply Hotkey Profile to keyboard

Once the Hotkey Sets are defined successfully, remember to make the selections take effect for the physical keyboard.

1. Select a **[Profile]**
2. Click on **[Shortcut Disabled]** to make this button turn to **[Shortcut Enabled]**
3. There will be **check** icon for the hotkey profile which has been activated.

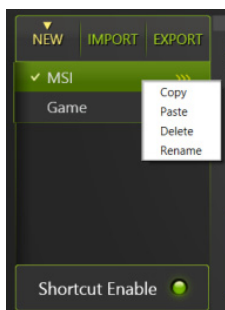


- **NEW:** Create a new profile.
- **IMPORT:** Import profiles from disk.
- **EXPORT:** Export profiles to disk.
- **Shortcut Disabled/ Enabled:** Turn Off/On the Hotkey.



## ■ Profile Editing

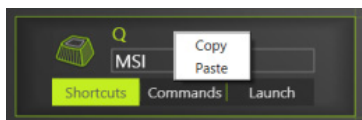
The created Profile can be edited if needed. Move the mouse cursor to a profile and then right click the mouse.



- ♦ **Copy/ Paste:** Copy and paste an existed profile.
- ♦ **Delete:** Delete a profile.
- ♦ **Rename:** Change the profile's name.

## ■ Hotkey Sets Editing

1. Move the mouse cursor to a Hotkey Set and then right click the mouse.
2. Select **[Copy]**, and then move the mouse cursor to another Hotkey Set where the copied hotkey will be pasted.
3. Right click the mouse again, and then select **[Paste]**.
4. A new and different Hotkey name will be given to this Hotkey Set.



■ Keyboard Language Selections

Shortcut Manager supports multilingual user interface for the keyboard.



## Note

## ❖ Keyboard LED Manager (KLM)

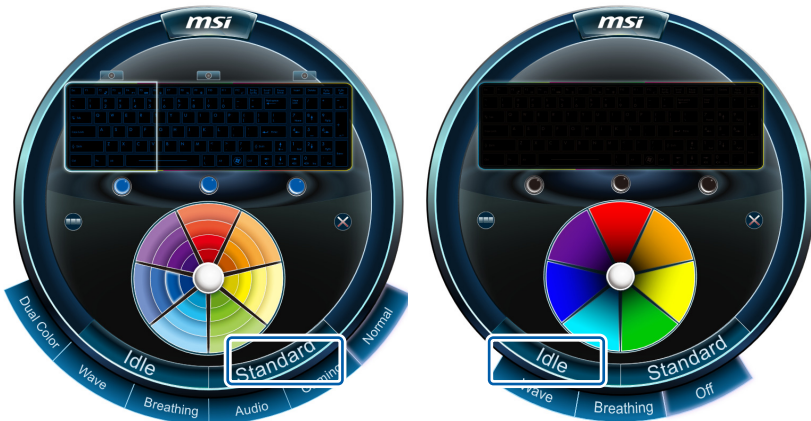
When the KLM application has been installed successfully, the KLM launching icon will appear under Programs and the system tray in the lower right-hand corner of screen. Click on this icon to launch the Keyboard LED Manager application.



### Standard Status and Idle Status

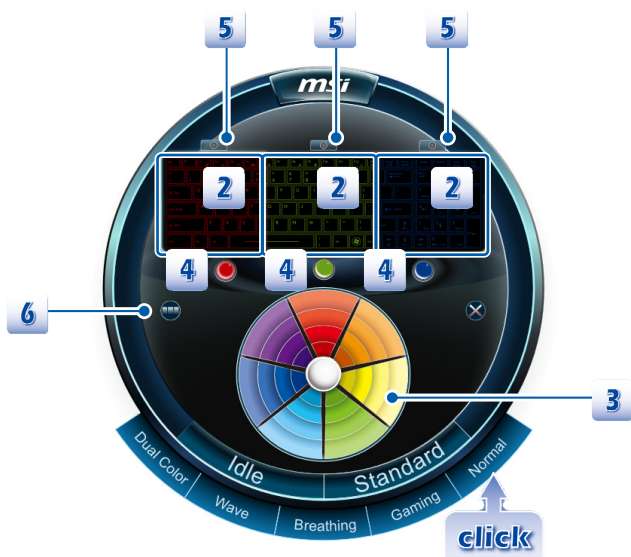
KLM allows users to set different LED flashing modes under Standard status and Idle status.

- When a desired LED Flashing Mode is selected under [ **Standard** ] status, the selection will take effect while the system is still on.
- When a desired LED Flashing Mode is selected under [ **Idle** ] status, the selection will take effect while the system is in Sleep mode.



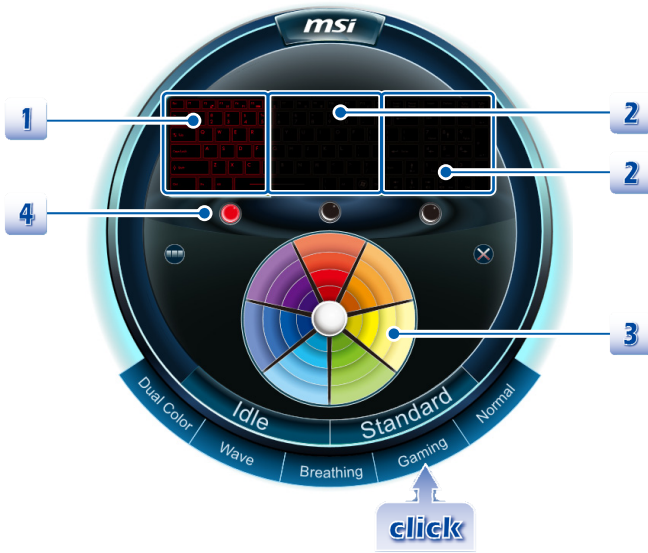
## Selecting the LED Flashing Mode under Standard Status

- Click on [ **Standard** ],
- Select a desired LED flashing mode from the option: **Dual Color**, **Wave**, **Breathing**, **Gaming**, and **Normal**.



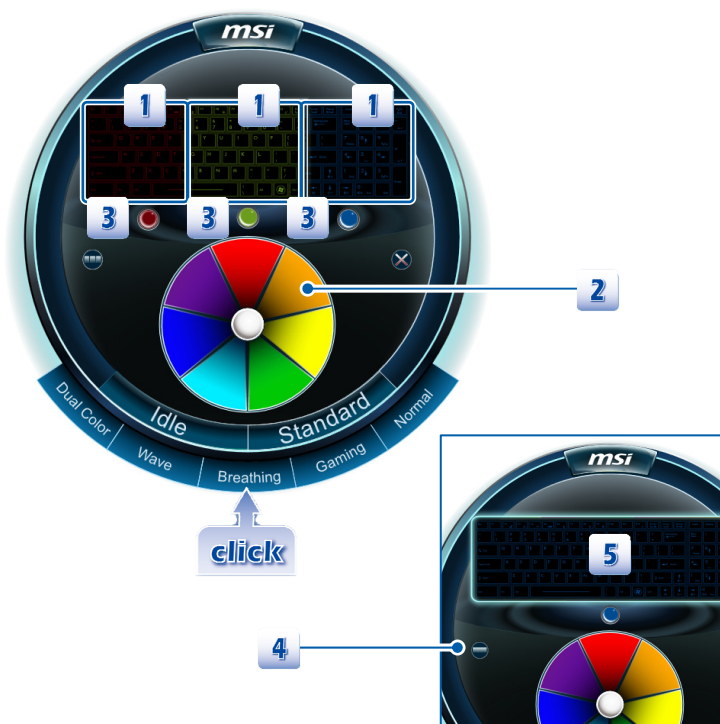
### Normal Mode:

1. When this mode is selected, the keyboard LEDs will always stay lit with the selected color.
2. Select an LED section (A, B, or C) by clicking on the corresponding area on the diagram.
3. Select a desired LED color for each LED section by clicking on the color wheel.
4. The selected color for each LED section will be shown in the LED Color Indicators below the keyboard diagram.
5. To turn off the LEDs of a particular LED section, simply click on the LED switch above each LED section.
6. To group all three LED sections into one main section, click [ **Lock Keyboard** ] on the left hand side. Then only one LED color can be selected for the keyboard LEDs.



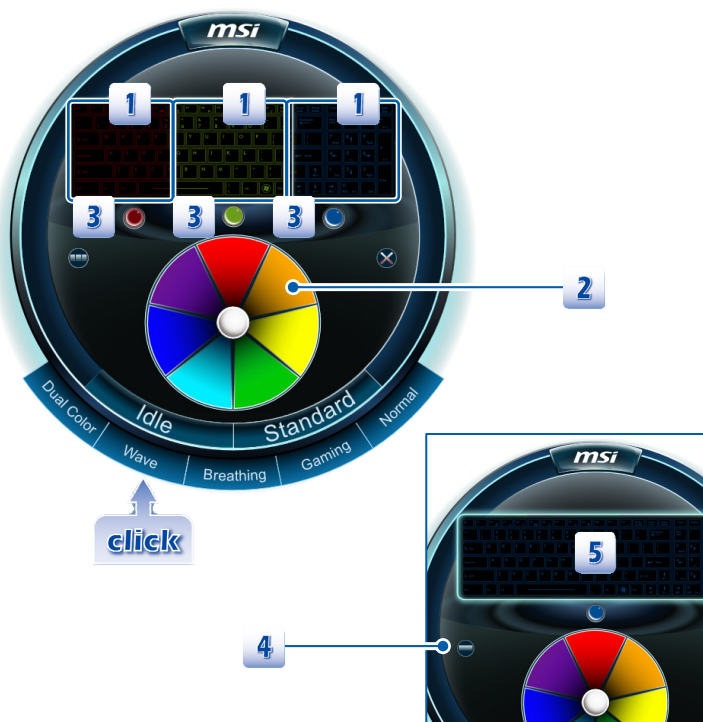
### Gaming Mode:

1. The keyboard LEDs of Section-A will always be lit to show the selected color.
2. The keyboard LEDs of Section-B and Section-C will always be disabled when Gaming mode is selected.
3. Select a desired LED color by clicking on the color wheel.
4. The selected color will be shown in the LED Color Indicator for Section-A



### Breathing Mode:

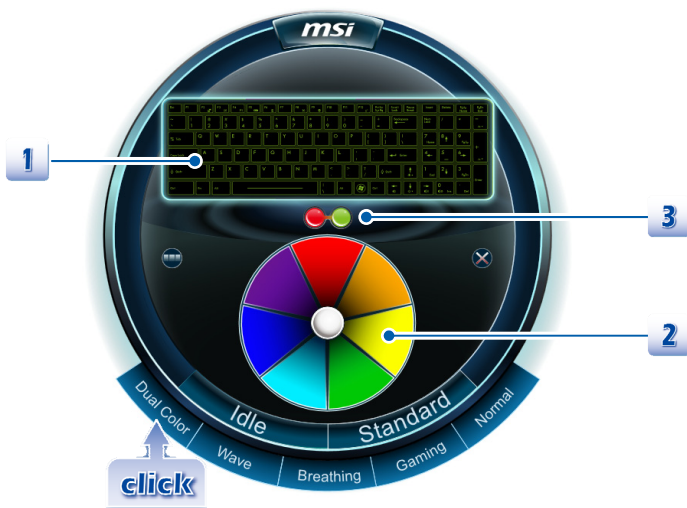
1. The keyboard LEDs of each section will be individually lit with the selected LED color and then darkened with a steady rhythm.
2. Select a desired LED color for each LED section by clicking on the color wheel.
3. The selected color for each LED section will be shown in the LED Color Indicators located below the keyboard diagram.
4. To group the three LED sections into one main section, click [ Lock Keyboard ] on the left hand side.
5. Now only a single LED color can be selected for the keyboard LEDs.



### Wave Mode:

1. The keyboard LEDs of Section A, B, and C will be lit with the selected LED color in order from LED Section-C to Section-B to Section-A, and then the LEDs will darken with a steady rhythm.
2. Select a desired LED color for each LED section by clicking on the color wheel.
3. The selected color for each LED section will be shown in the LED Color Indicators located below the keyboard diagram.
4. To group the three LED sections into one main section, click [ **Lock Keyboard** ]
5. Only a single LED color can be selected for the keyboard LEDs.





### Dual Color Mode:

1. When Dual Color mode is selected, the keyboard LEDs will be grouped into one main section, and the keyboard LEDs will be lit with the two selected colors.
2. Select two LED colors at a time by clicking on the color wheel.
3. The two selected colors will be shown on the LED Color Indicator.

## Selecting the LED Flashing Mode under Idle Status

Select a desired LED Flashing Mode in Idle status. The selection will take effect while the system is in Sleep mode.

- Click on [ **Idle** ],
- Select a desired LED flashing mode from **Wave**, **Breathing**, and **Off**.



**Off Mode:** Turn off the Keyboard LED function.

### Breathing Mode:

1. The keyboard LEDs of each section will be individually lit with the selected LED color in order and then darkened with a steady rhythm.
2. Select a desired LED color for each LED section by clicking on the color wheel, and the selected color for each LED section will be shown in the LED Color Indicators located below the keyboard diagram.
3. To group the three LED sections into one main section, click [ **Lock Keyboard** ] so that only one LED color can be selected for the keyboard LEDs.

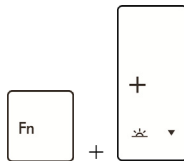
### Wave Mode:

1. The keyboard LEDs of each section will be lit with the selected LED color in order from LED Section-C to Section-B, and to Section-A, and then dimmed in an on/off pattern.
2. Select a desired LED color for each LED section by clicking on the color wheel.
3. To group the three LED sections into one main section, click [ **Lock Keyboard** ], so that only one LED color can be selected for the keyboard LEDs.

### Adjusting the RGB Color level of LEDs

The RGB Color level of the keyboard LEDs is adjustable.

- Make sure the KLM console is closed.
- Use the following buttons to adjust the shades of color of the LEDs.



Increase LEDs' RGB saturation level.



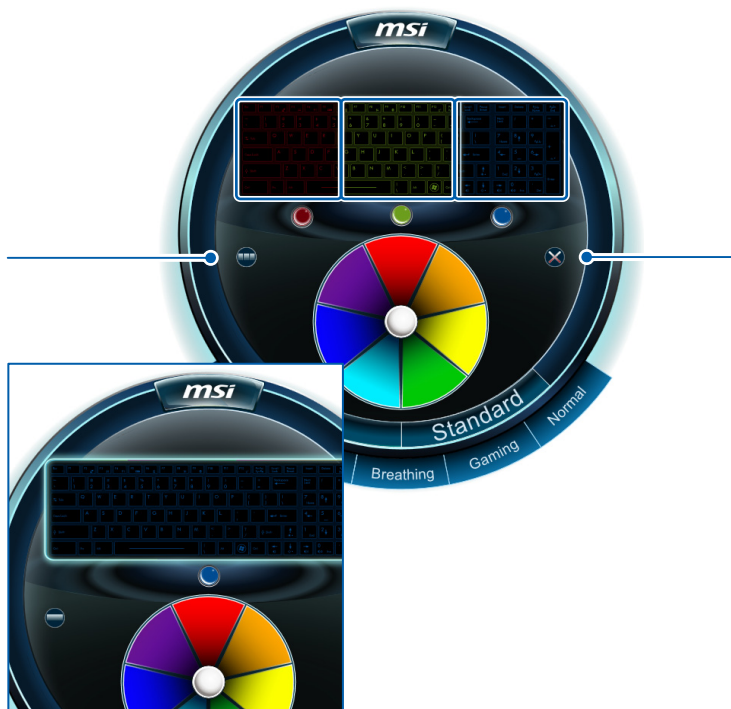
Decrease LEDs' RGB saturation level.

## Grouping the LED sections

The divided LED sections can be grouped into one main section by clicking on the [ **Lock Keyboard** ] icon. Once the three LED sections are grouped, only one color can be selected to be illuminated. **Note:** Grouping function will not take effect in Gaming mode.

## Closing the KLM interface

To close the KLM interface, simply click on the [ **Close** ] icon.





## ❖ Sizing Options (Only available in selected models)

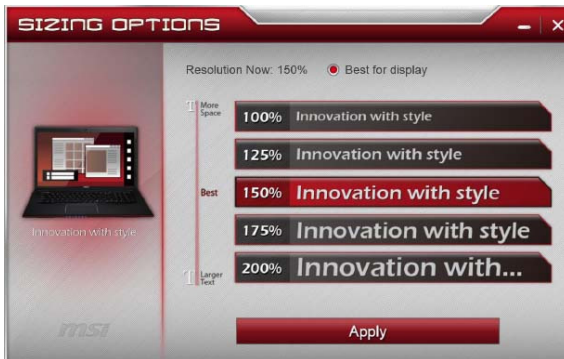
When the Sizing Options application has been installed successfully, the Sizing Options launch icon will appear in the MSI folder of the Start menu and the system tray in the lower right-hand corner of screen.



1. Left click on **Sizing Options** shortcut icon on the desktop or the icon in the lower right-hand corner of the screen to launch the Sizing Options application.
2. Left click on the **Sizing Options** launch icon of the Start menu to launch the Sizing Options application.

### Main Window

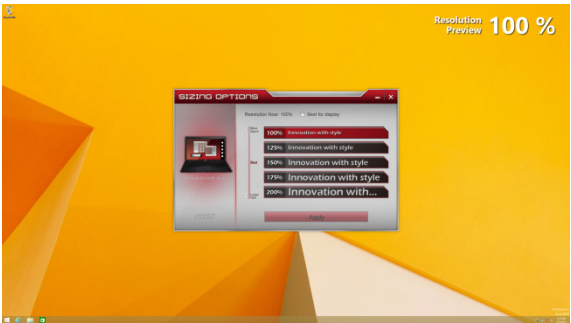
Sizing Options has 5 adjustable DPI (dots per inch) buttons in the main window: 100%, 125%, 150%, 175% and 200% DPI. **150%** DPI is the default and the optimum setting for resolution 2880 x 1620 (3K panel). There will no preview image if the resolution is not 2880 x 1620 (3K panel).



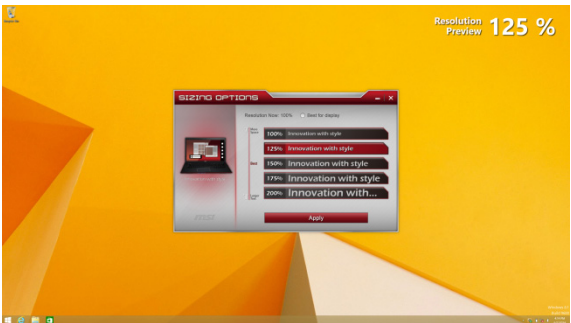
# 5 Preview Windows

When select one DPI setting will bring the following respective preview image:

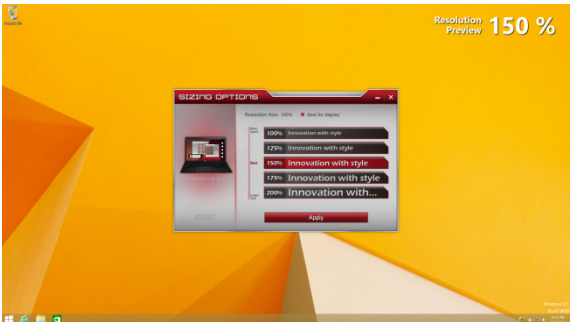
1

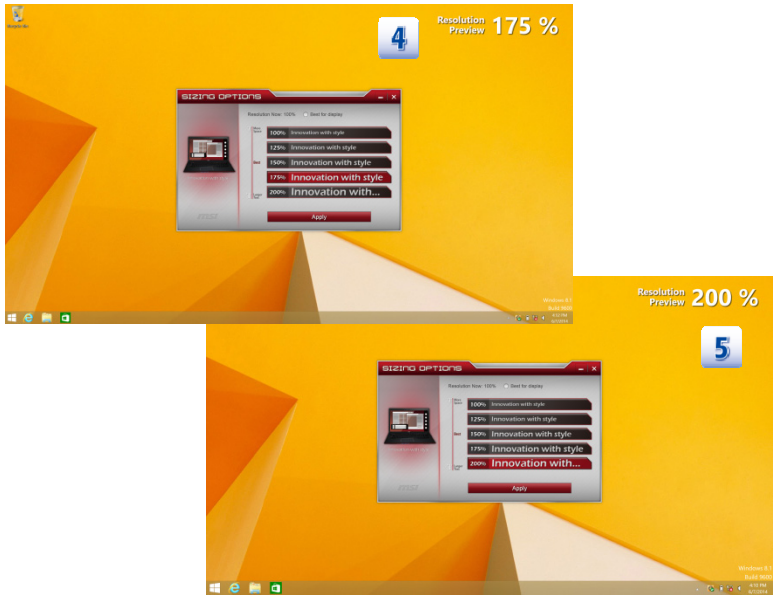


2



3





When change the DPI setting will bring one dialogue and ask you to sign out of the computer to apply these changes, or you can choose to sign out later, the updated DPI setting will take effect.





## Best DPI for the Display

We recommend you to apply the following DPI settings to get the best DPI for the display.

Resolution	Best DPI
Resolution<1920X1080	100%
1920X1080 <= Resolution<2880 x 1620	125%
2880 x 1620 (3K panel)	150%



## Note

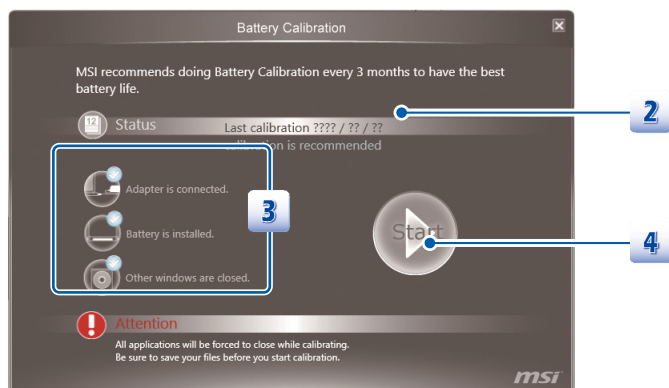
## ❖ Battery Calibration

When the Battery Calibration application has been installed successfully, the Battery Calibration launch icon will appear in the MSI folder of the Start menu. Click on this icon to launch the Battery Calibration application. It is recommended to go through the Battery Calibration process every 3 months to have the best battery life.



### Starting the Battery Calibration Process

1. Left click on the Battery Calibration launch icon in the MSI folder of the Start menu, and the Battery Calibration main display will appear.
2. If you are using the Battery Calibration process for the very first time, there will be no date information for the last calibration shown on the Stats field.
3. Before starting the Battery Calibration process, make sure that the following conditions are met:
  - a. The AC/DC adapter is connected.
  - b. The battery is installed properly.
  - c. No any other application is activated.
4. Left click on the "Start" icon to start the Battery Calibration process.



5. The calibration process status will be shown on the display telling users that the system is now charging, recharging, or discharging.



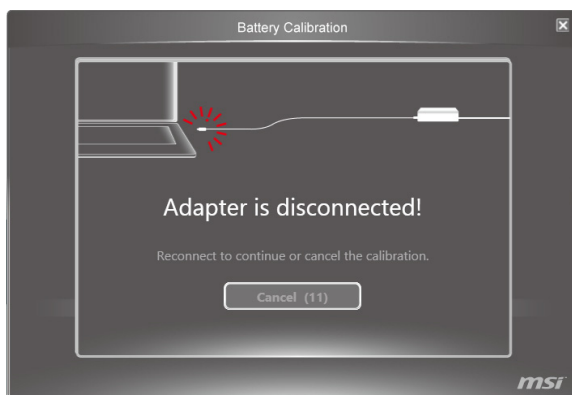
6. Calibration completed.



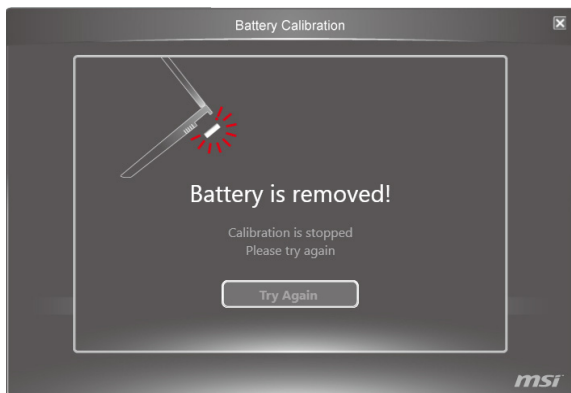
Note: MSI recommends doing Battery Calibration every 3 months to have the best battery life.

## Warning Notification

1. If the AC/DC adapter is disconnected during the calibration process, a warning notification will appear.
2. Please reconnect the AC/DC adapter to continue the calibration process within 15 seconds; otherwise the calibration process will stop automatically.



3. If the battery of the notebook is not installed properly or removed during the calibration process, the warning notification will appear.
4. Please double check that the battery is installed properly, and then press the Try Again button to continue the calibration process.





## ❖ System Control Manager (SCM)

System Control Manager (SCM) is a software application for driving and controlling the Fn keys on the keyboard. The SCM is pre-installed with the default OS and will run automatically in background. If you intend to install your own version of OS, it is required to install SCM to enable the Fn keys.

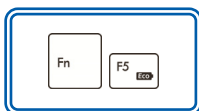


### Quick Launch [Fn] Keys

Use the Quick Launch [Fn] buttons on the keyboard to activate the specific applications and tools. With the help of these quick launch buttons, users will be able to do work more efficiently.

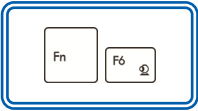
#### F5: ECO Engine (Power Saving) Function

ECO Engine, the outstanding and unique power saving function, provides various power saving modes – Movie mode, Presentation mode, Game mode, and Office mode, to extend the battery running time while performing different tasks with this notebook.

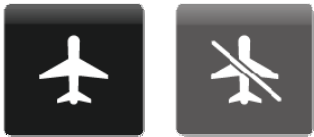
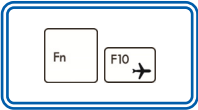


<b>Movie Mode</b>	Select this mode when playing multimedia applications.
<b>Presentation Mode</b>	Select this mode when performing presentation applications.
<b>Game Mode</b>	Select this mode when performing game applications.
<b>Office Mode</b>	Select this mode when dealing with office documentation tasks.
<b>ECO Off</b>	Select to disable ECO Engine.

**F6: Webcam**



**F10: Airplane Mode**





## User Define key

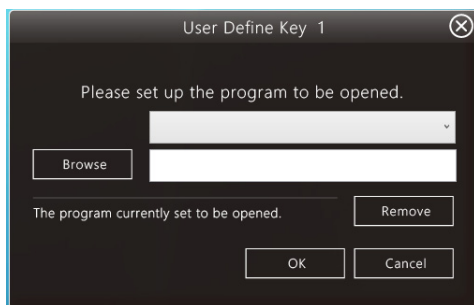
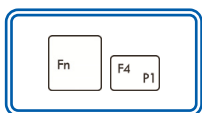
This function allows users to define the **P1** quick launch button for launching the particular application. Once the shortcut has been created properly, users will be able to launch the selected program, application, utility, or path by pressing the **P1** Fn key on the keyboard.

**Note:** This function will not be available when **Dragon Gaming Center** is installed.

To restore this function, uninstalling **Dragon Gaming Center** is necessarily required.

- To define the **P1** quick launch button, move the cursor to the **[SCM]** icon on the lower right side of the display, and then right click the mouse to select **P1 Setting** to bring out the Use Defined Key settings dialogue.
- Click the **Browse** button to setup the shortcut to an appointed program, application, utility, or path, and then click OK to have this selection take effect.
- Click the **Remove** button to delete the previous shortcut made.

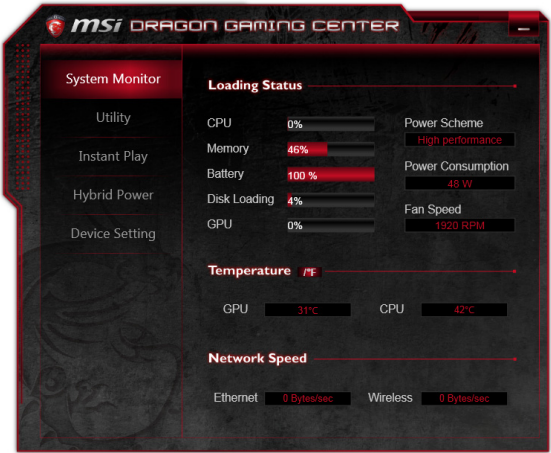
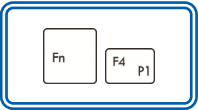
### F4: P1 Setting



**Dragon Gaming Center** (optionally supported)

When the application of Dragon Gaming Center is installed, activate Dragon Gaming Center with Quick Launch **P1** Fn key.

**F4: Dragon Gaming Center**



## System Control Manager interface

Besides using the [Fn] buttons on the keyboard to activate the specific applications and tools, users may also achieve the same results via the System Control Manager interface.

Double right click on the **SCM** icon on the lower right corner of the display to bring up the System Control Manager interface as shown below.



**1. Devices ON/ OFF**

Click on the device icon to switch the selected device on or off recurrently.

**2. Brightness Level**

Click on the Left/ Right arrow to turn the display brightness level up and down.

**Volume Level**

Click on the Left/ Right arrow to turn the speaker volume level up and down.

**3. ECO Engine (Power Saving) Function**

Select a proper power saving function by clicking on the icons.

**4. Display ON/ OFF**

Click on the icon to switch off the display. To switch on the display, hit any key on the mouse or keyboard.

**5. ODD Eject (optionally supported)**

Click on the icon to eject the ODD. (If there is multiple ODD on the notebook, this function will eject the first ODD by ASCII order.)

## Note

## ❖ Recovery Image Backup Tool

Recovery Image Backup Tool, the utility designed to backup the recovery image to blank DVD disks, a USB flash disk or ISO files. They can be used to recover the system to manufacturer's default settings when it is needed.



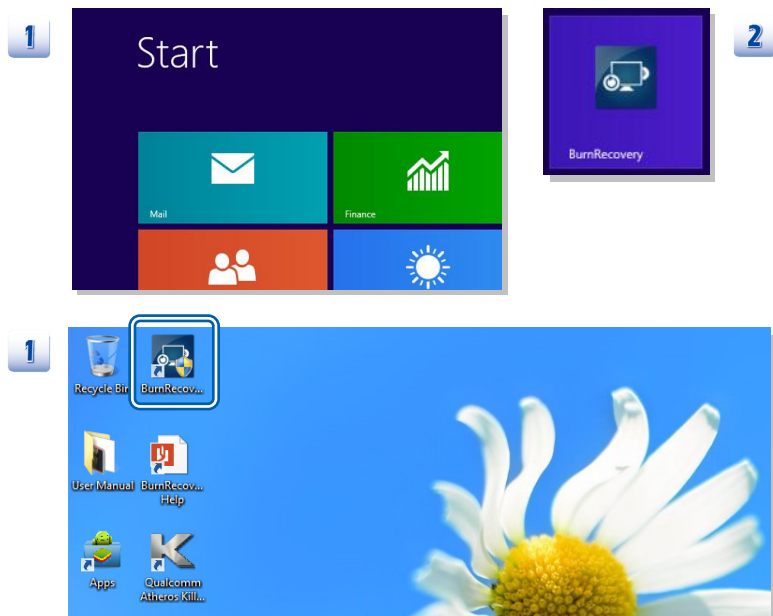
The illustrations and instructions provided here are for reference only and may vary from different operating system supported.

Usage of this application on any product with no authorization may be prohibited.

*Note: For more detailed information about using Recovery Image Backup Tool, please refer to the User's Manual of System Recovery.*

### Activating the Utility

1. Find the shortcut of BurnRecovery on the Start Screen or Windows desktop.
2. Double click on the shortcut to activate the Recovery Image Backup Tool.
3. Main Selection page of the Recovery Image Backup Tool.



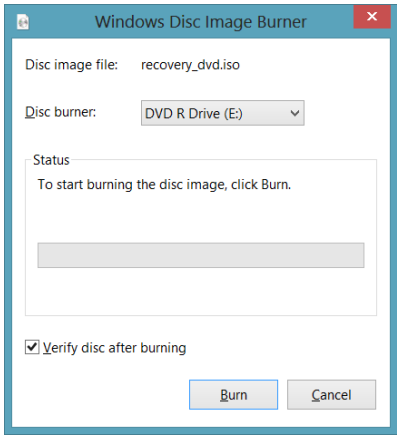


## Create and Burn a Recovery Disk

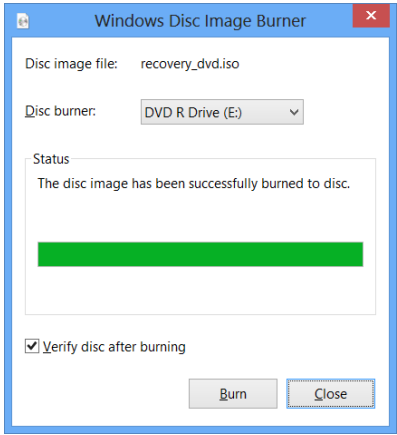
1. To create and burn a Recovery Disk, select **[Recovery Disk]**, and then follow the on-screen instructions to continue.
2. Prepare the number of the writable disk as requested.
3. Place the disk into the optical drive device, and then select **[Burn]**.
4. Note: Closing the other applications while burning the recovery disk is suggested.
5. Click **[Close]** when a disk is successfully created.
6. Click **[Next]** to continue the procedure of creating and burning recovery disks.
7. Exchange and place the rest disks into the optical drive device as instructed.
8. All recovery disks created and burned successfully.



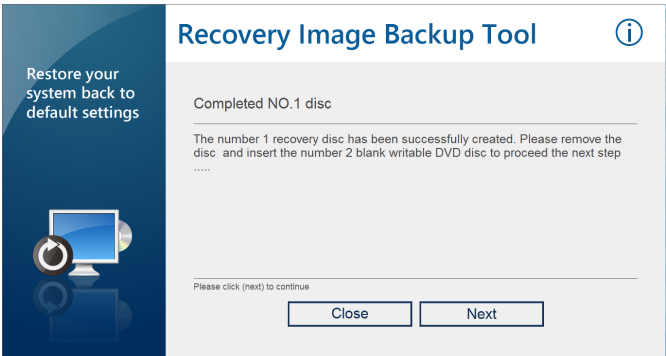
3



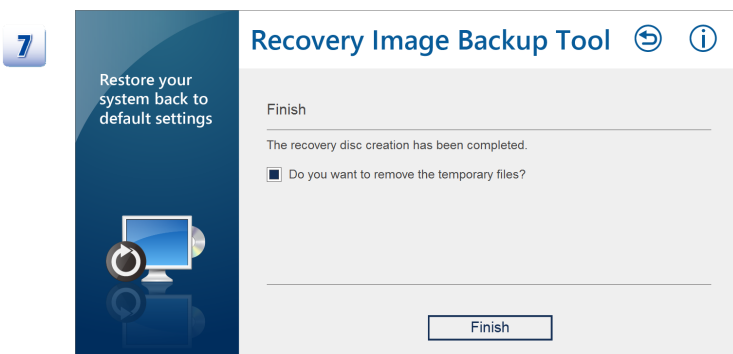
4



5







## Recovering the System

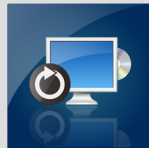
When the hard drive and system encountered non-recoverable problems, it is always recommended to perform the System Recovery Function with F3 Hotkey first.

If the system is unable to recover to the manufactory default settings with F3 Hotkey, follow the instructions below to proceed the recovery function with the DVD recovery disks or USB flash drive.

1. Insert the DVD recovery disks to your computer.
2. Restart the computer.
3. Press the **[F11]** hotkey on the keyboard while the computer is re-booting.
4. Select to boot from **[DVD Recovery disk]**, and press **[Enter]** to confirm the selection, and then follow the on-screen instructions to continue.
5. The main page of Recovery System appears.

5

### Recovery System



Hard Disk Recovery

System Partition Recovery

Exit

6. Select **[Hard Disk Recovery]** to restore the hard disk to the manufactory default settings.
7. Select **[System Partition Recovery]** to reset the hard disk drive partition where the operating system installed to the manufactory default settings.

6

## Recovery System



Hard Disk Recovery

System Partition Recovery

Exit

The whole hard disk will be formatted. All the data will be defragmented and restored to factory default settings.

7

## Recovery System



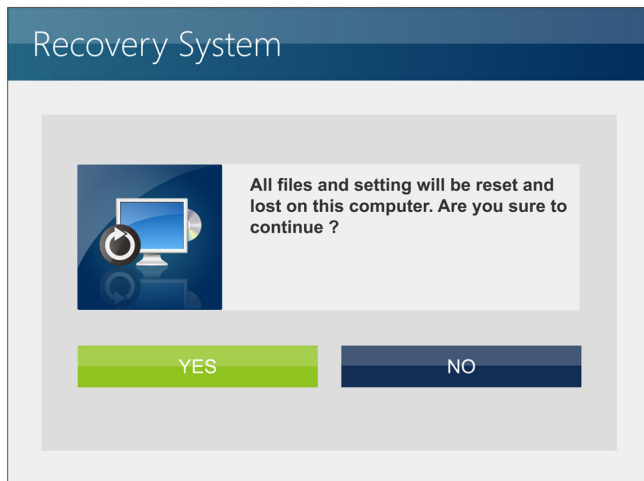
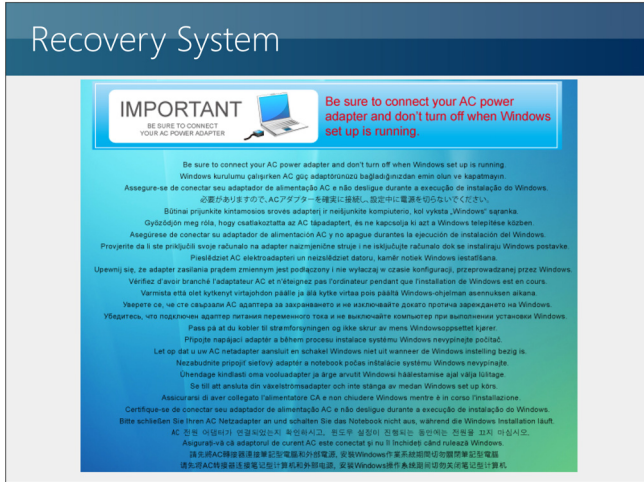
Hard Disk Recovery

System Partition Recovery

Exit

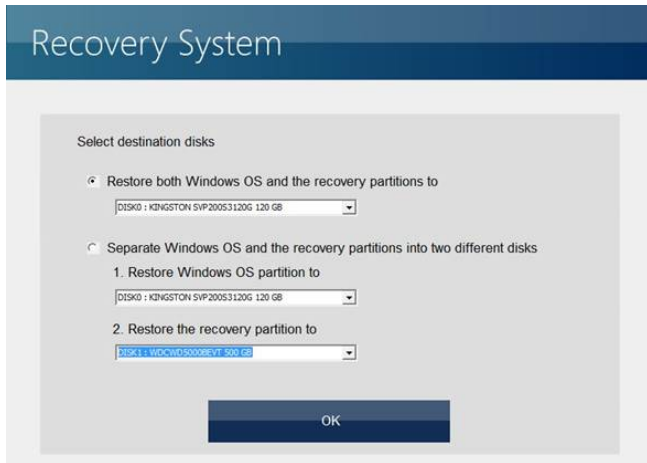
Only OS\_Install drive will be formatted.  
Other drives will not be affected.  
OS\_Install drive will be restored to factory default settings.

8. AC power is required while proceeding the System Recovery Function. Assure that the AC power is connected to the notebook before moving forward to the next step.
9. The system recovery process will format the hard disk drive; make sure that the important data has been backed up before continuing the process.

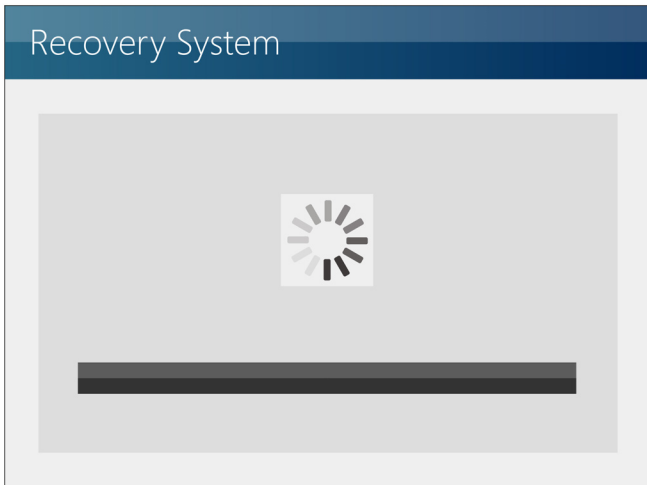


10. If the notebook is equipped with two or more hard disks, Windows OS and recovery partitions can be restored to a single hard disk, or separated hard disks.
11. Follow the on-screen instructions to continue.

10



11



11

## Recovery System



Operation System : Windows 8

Elapsed Time: 0 min 4 sec  
Time Left: 4 min 56 sec

Progress:



## Recovery System



Windows 8 Recovery is successful  
please press "OK" and restart your  
system.

OK

