



Intel® Optane™ Memory Installation Guide

Contents

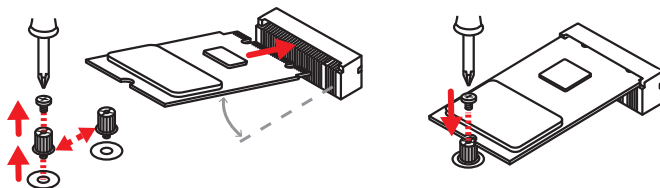
System Requirements	2
Installing the Intel® Optane™ memory.....	2
Removing the Intel® Optane™ memory.....	4

System Requirements

- Intel® Optane™ memory ready MSI® motherboards
- Supported 7th Gen, or later, Intel® Core™ - i Processor
- System BIOS that supports the Intel® Rapid Storage Technology (Intel® RST) 15.5 or later driver
- Operating system: Windows 10 64 bit (UEFI mode).
- Intel® Optane™ Memory Module

Installing the Intel® Optane™ memory

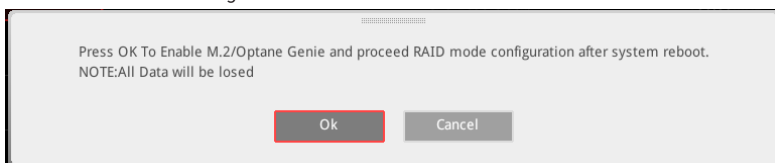
1. Update BIOS.
 - Download the latest BIOS file that matches your motherboard model from MSI website.
 - Extract and copy the files into the USB flash drive.
 - Power on and press **Delete** key to enter BIOS Setup menu.
 - Insert the USB flash drive that contains the BIOS file into the USB port.
 - Select the **M-FLASH** tab and click on **Yes** to reboot the system and enter the flash mode.
 - Select the BIOS file to update BIOS.
 - After completing the updating process, the system will reboot automatically.
2. Install the Intel® Optane™ memory module.
 - Power off the system.
 - Refer to the User Guide of your motherboard for location to install your Intel® Optane™ memory module.
 - Install the Intel® Optane™ memory module into the M.2 slot.



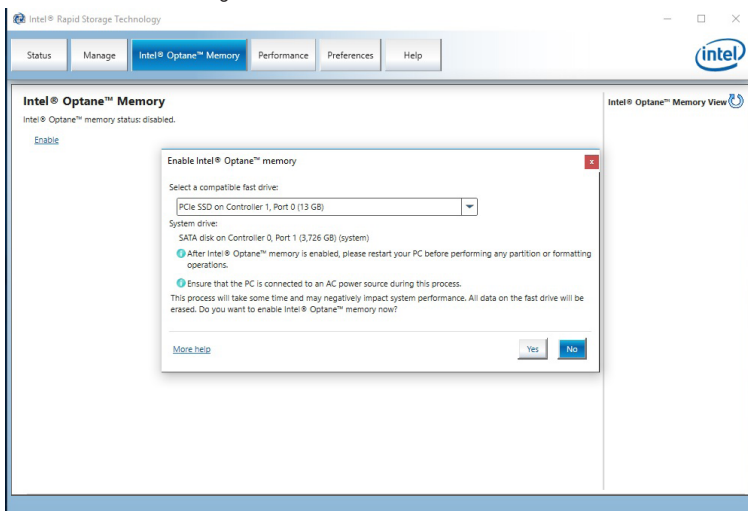
3. Enable M.2/Optane Genie
 - Power on and press **Delete** key to enter BIOS Setup menu.
 - Enable M.2/Optane Genie by clicking the **M.2/Optane Genie** item.



- Click **Ok** in the dialog.



- Press **F10** to save configuration and exit.
4. Install the Intel® Optane™ memory SW/driver.
 - Reboot to operating system.
 - Install the Intel® Optane™ memory SW/driver (Intel® Rapid Storage Technology 15.5).
 - Reboot System.
 5. Enable Intel® Optane™ Memory.
 - Enable Intel® Optane™ Memory via the Intel® Optane™ memory application (auto-launches upon reboot).
 - Click **Yes** in the dialog.



- Reboot System.



WARNING

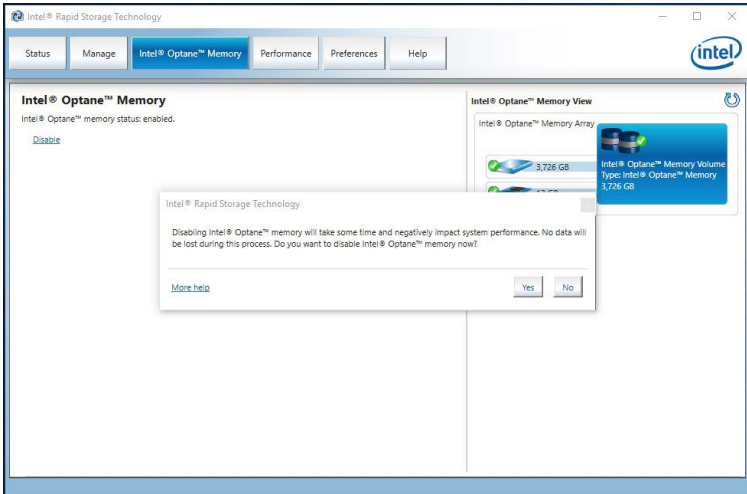
Once you enable Intel® Optane™ memory, in order to prevent seriously damage your operating system, please follow the cautions listed below.

- **DO NOT set the SATA mode back to AHCI in BIOS.**
- **DO NOT revert back to older version of the BIOS.**
- **DO NOT remove the Intel® Optane™ memory module.**
- **DO NOT replace the CPU that is not supported by Intel® Optane™ Memory.**

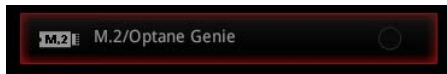
Removing the Intel® Optane™ memory

If you no longer want to use Intel® Optane™ memory, you have to disable the Intel® Optane™ memory before removing the Intel® Optane™ memory module to avoid operating system damage. Please follow the steps below to remove the Intel® Optane™ memory.

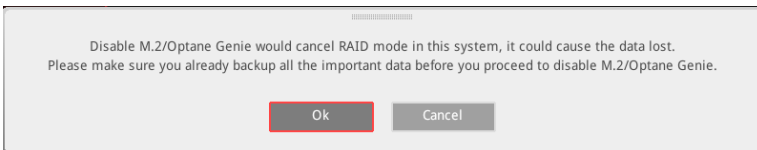
1. Disable Intel® Optane™ Memory.
 - Disable Intel® Optane™ Memory via the Intel® Optane™ memory application (Intel® Rapid Storage Technology).
 - Click **Yes** in the dialog.



- Reboot System.
2. Disable M.2/Optane Genie
 - Press **Delete** key to enter BIOS Setup menu during POST.
 - Disable M.2/Optane Genie by clicking **M.2/Optane Genie** item.



- Click **Ok** in the dialog.



- Press **F10** to save configuration and exit.
 - Power off the system.
3. Remove the Intel® Optane™ memory module.